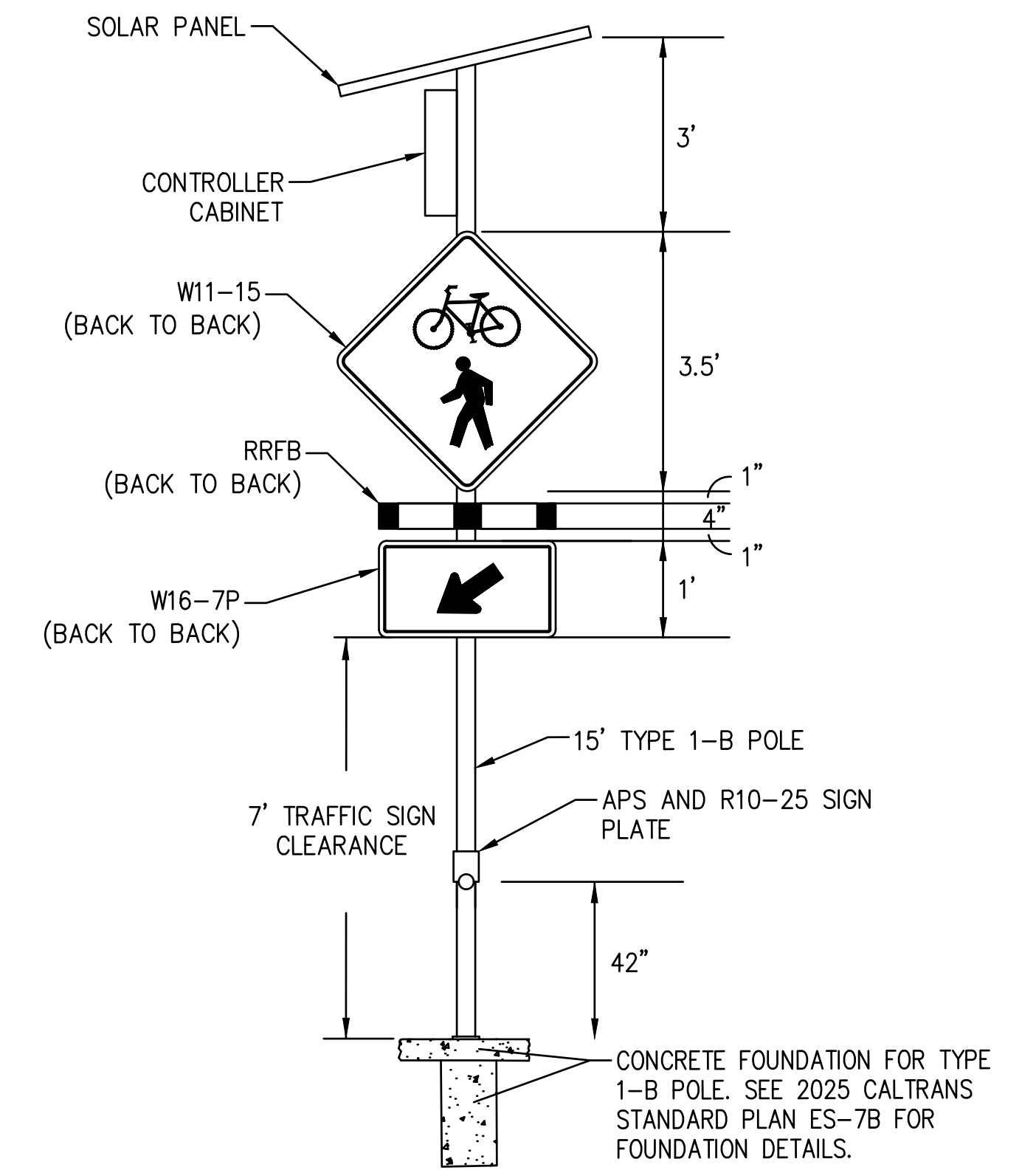


DETAIL B
1"=20'

PROJECT NOTES (THIS SHEET ONLY):

- 1 FURNISH AND INSTALL CARMANAH SOLAR-POWERED SC315-G RECTANGULAR RAPID-FLASHING BEACON (RRFB), OR CITY-APPROVED EQUIVALENT, ON 15' TYPE 1-B POLE IN BI-DIRECTIONAL CONFIGURATION, WITH BACK TO BACK W11-15 AND W16-7P SIGNS, POLARA INX ASSEMBLY AND R10-25 SIGN PLATE. SEE DETAIL C ON THIS SHEET. POLE LOCATION TO BE CONFIRMED IN THE FIELD AND APPROVED BY THE CITY'S REPRESENTATIVE.
- 2 THE ARROW OF THE APS BUTTON SHALL BE INSTALLED PARALLEL TO THE CROSSING. ALL APS PUSH BUTTONS SHALL COMPLY WITH ADA PLACEMENT AND REACH REGULATIONS.
- 3 FOR EACH W11-15 SIGN, THE DIRECTION OF PEDESTRIAN AND BICYCLE SHALL FACE TOWARD THE VEHICULAR TRAVEL WAY (I.E., AS OBSERVED FROM A DRIVER'S PERSPECTIVE, FACING RIGHT ON THE LEFT SIDE OF THE ROADWAY OR WHEN PLACED IN A MEDIAN, OR FACING LEFT ON THE RIGHT SIDE OF THE ROADWAY).



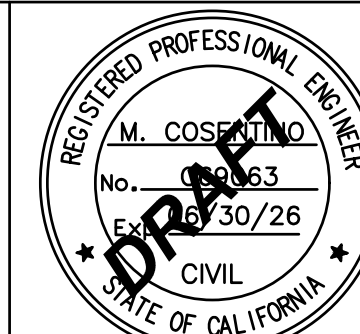
DETAIL C
NTS



NOT FOR CONSTRUCTION



BKF
255 SHORELINE DRIVE
SUITE 200
REDWOOD CITY, CA 94065
(650) 482-6300
www.bkf.com



NO.	DATE	REVISION	BY	APP'D.

CITY OF SOUTH SAN FRANCISCO
DEPARTMENT OF PUBLIC WORKS

MISSION ROAD STREET IMPROVEMENTS		PD-2
MISSION ROAD AT CENTENNIAL WAY TRAIL PAVEMENT DELINEATION		
SCALE: AS SHOWN	APPROVED:	DRAWN: ARS/ RR
DATE: JUNE 23, 2026		CHECKED: MC/ SD
SHEET 5 OF 10		DRAWING NO.

