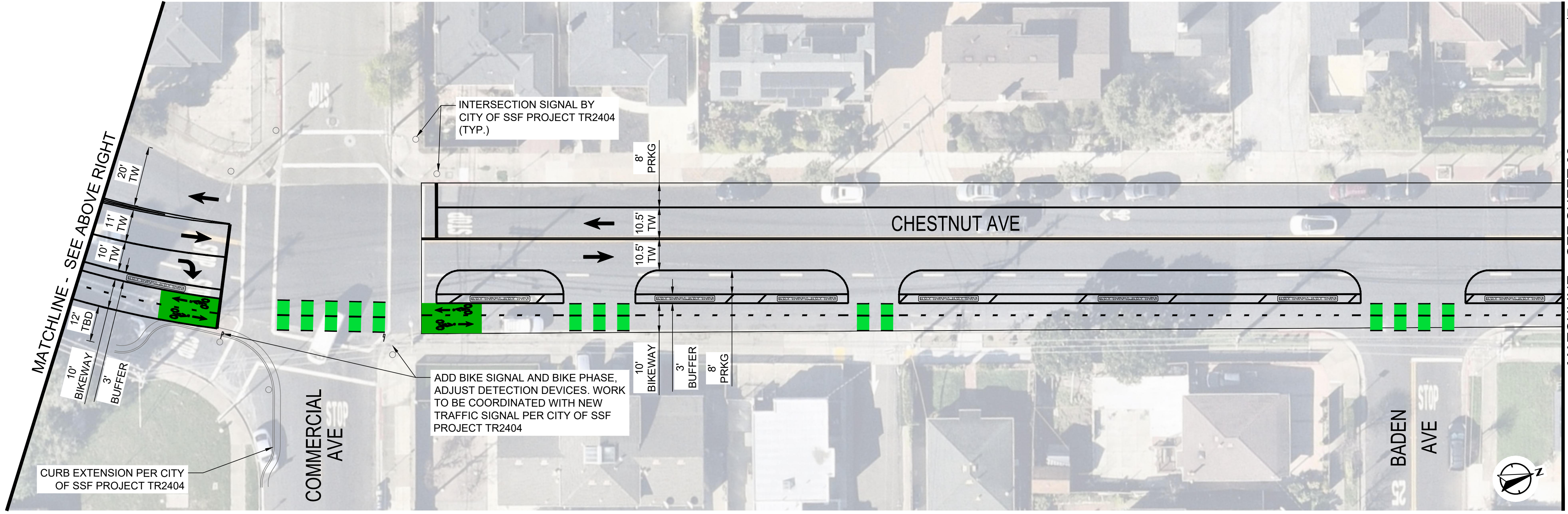
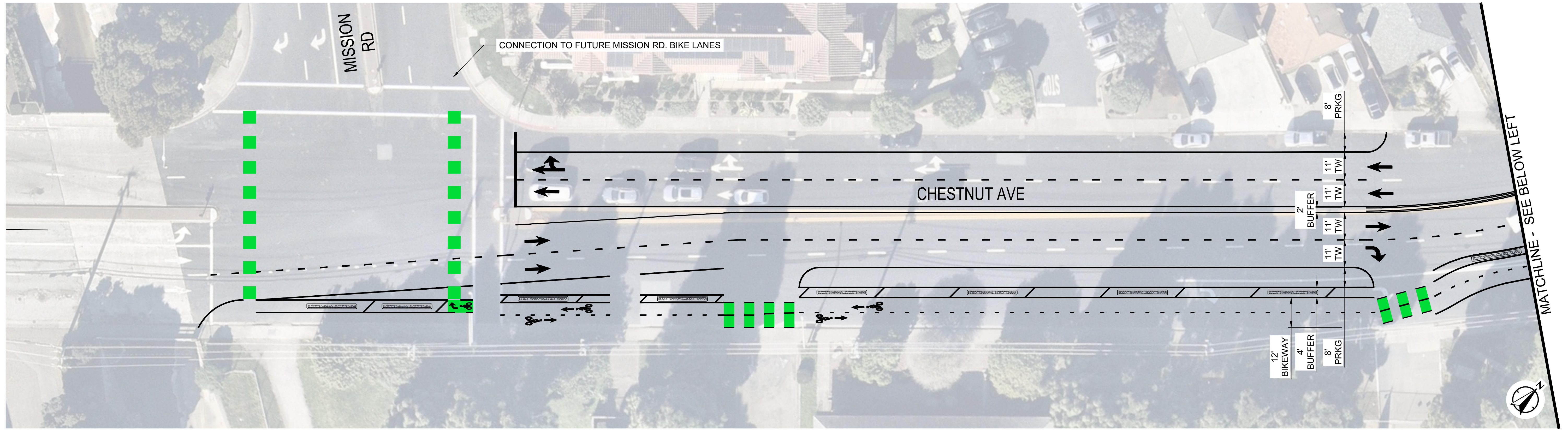
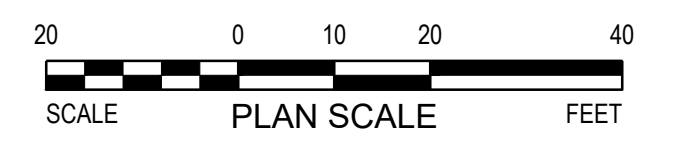


Dwg filename: N:\Shared\PROJECTS\262600612_South San Fran Chestnut Ave_Concepts\CAD\01_Plans\2600612_Plan_Chestnut Extension Concepts.dwg Last saved by: DanielleMcLaron Plot date: 5/21/2026 3:41 PM Plot style table: ALTA NCS Standard.sbt



- NOTES:**
1. ALL EXISTING IMPROVEMENTS SHALL BE PROTECTED IN PLACE UNLESS NOTED OTHERWISE.
 2. CONFLICTING STRIPING SHALL BE REMOVED WITH A METHOD ACCEPTABLE TO THE CITY ENGINEER
 3. STRIPING TO BE PER CALTRANS STANDARD PLANS AND CA MUTCD, LATEST EDITIONS.



MARK	DESCRIPTION	ISSUE	DATE	INITIAL



CITY OF SOUTH SAN FRANCISCO
DEPT OF PUBLIC WORKS
315 MAPLE AVE.
SOUTH SAN FRANCISCO
CA. 94080

**PRELIMINARY
NOT FOR CONSTRUCTION**

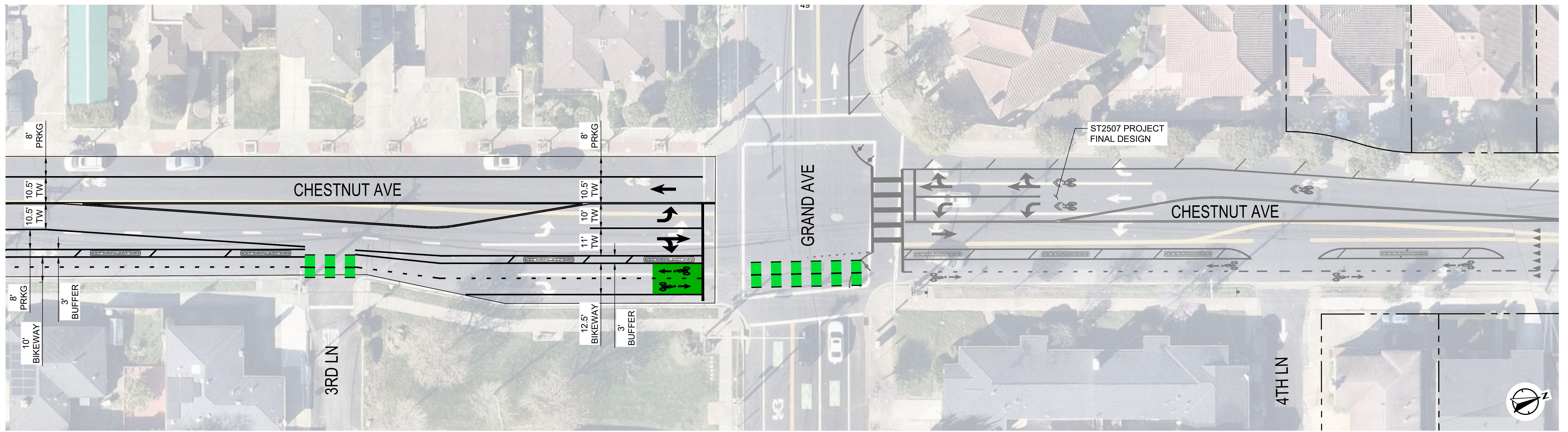


PROJECT NO: 2600612
DESIGNED BY: DHM
DRAWN BY: DHM
REVIEWED BY: KK
DATE: 5.21.2026
SCALE: AS SHOWN

Chestnut Avenue Improvement Concepts
TWO-WAY CYCLE TRACK
MISSION ROAD TO
GRAND AVENUE

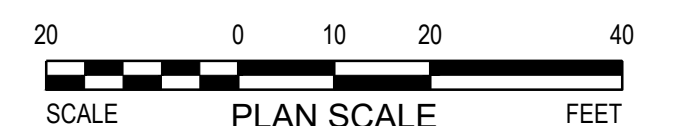
SHEET NO.
01

Dwg filename: N:\Shared\PROJECTS\262600612 South San Fran Chestnut Ave. Concepts\CAD\01_Plans\2600612_P1_N_Chestnut Extension Concepts.dwg Last saved by: DanielleMcLaron Plot date: 5/21/2026 3:41 PM Plot style table: ALTA NCS Standard.ctb



ST2507 PROJECT FINAL DESIGN

- NOTES:**
1. ALL EXISTING IMPROVEMENTS SHALL BE PROTECTED IN PLACE UNLESS NOTED OTHERWISE.
 2. CONFLICTING STRIPING SHALL BE REMOVED WITH A METHOD ACCEPTABLE TO THE CITY ENGINEER
 3. STRIPING TO BE PER CALTRANS STANDARD PLANS AND CA MUTCD, LATEST EDITIONS.



MARK	DESCRIPTION	ISSUE	DATE	INITIAL



**PRELIMINARY
NOT FOR CONSTRUCTION**

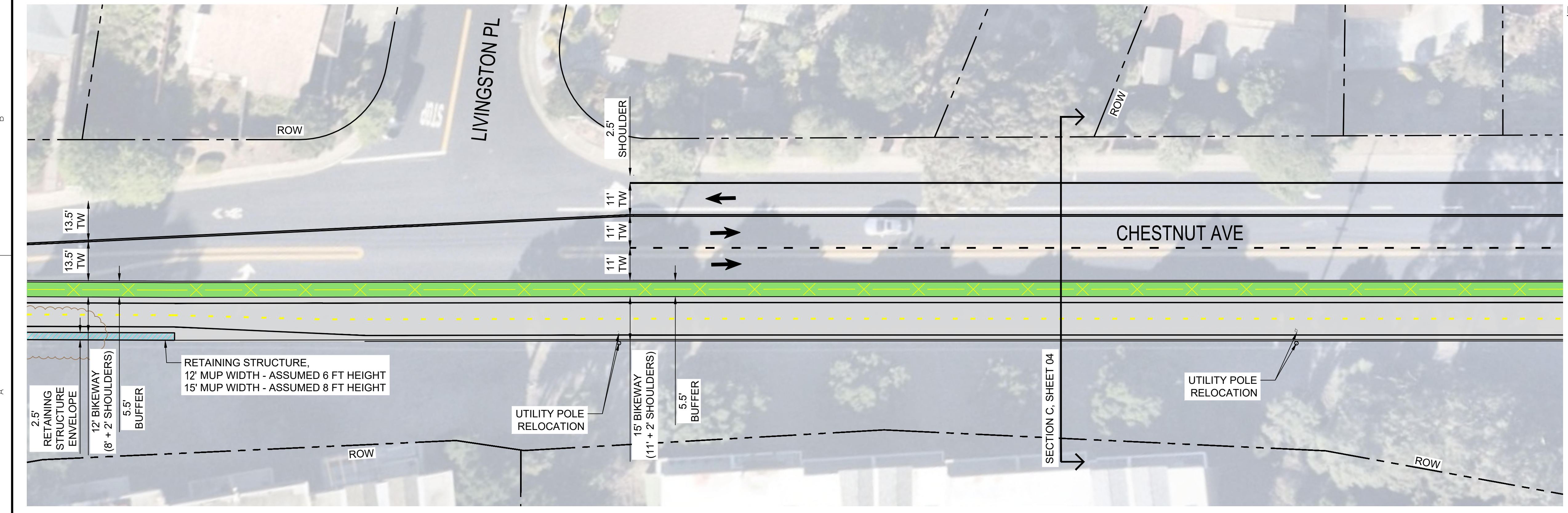
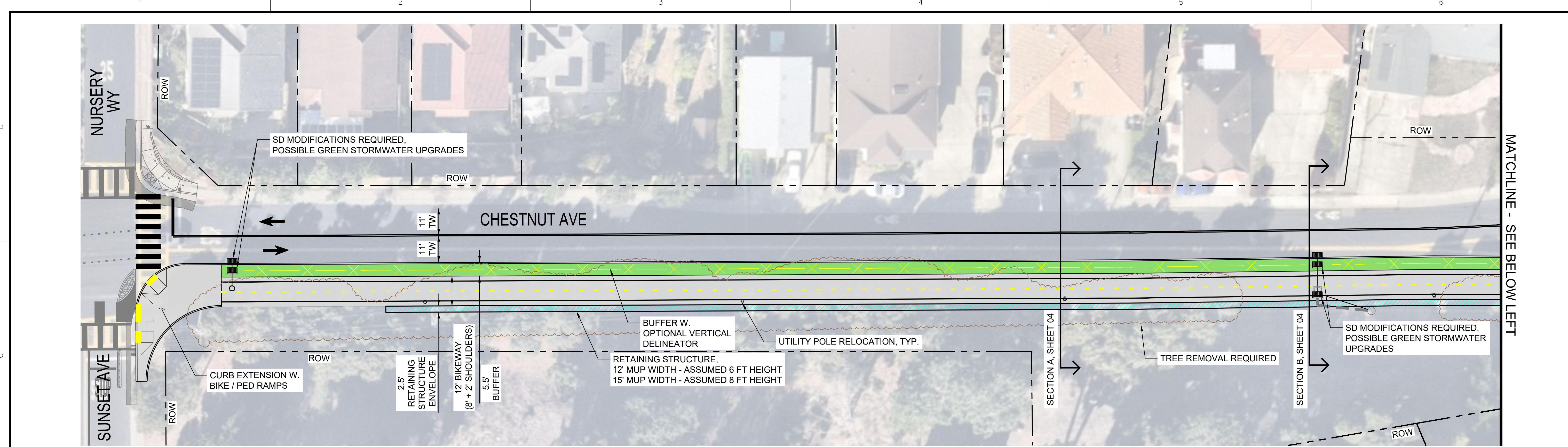


PROJECT NO: 2600612
 DESIGNED BY: DHM
 DRAWN BY: DHM
 REVIEWED BY: KK
 DATE: 5.21.2026
 SCALE: AS SHOWN

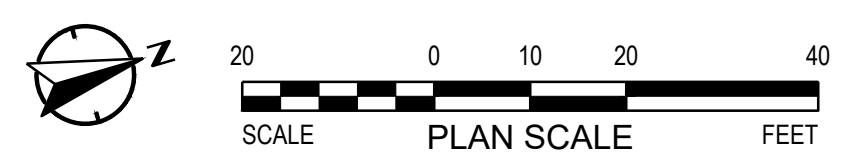
Chestnut Avenue Improvement Concepts
TWO-WAY CYCLE TRACK
 MISSION ROAD TO
 GRAND AVENUE

SHEET NO.
02

Dwg filename: N:\Shared\PROJECTS\260612_South San Fran Chestnut Ave_Concepts\CAD\01_Plans\260612_PLN_Chestnut Extension Concepts.dwg Last saved by: DanielleMcLaron Plot date: 5/21/2026 3:41 PM Plot style table: ALTA.NCS Standard.ctb



- NOTES:**
1. ALL WORK AND CONSTRUCTION ACTIVITIES SHALL BE CONFIRMED WITHIN THE PUBLIC RIGHT OF WAY. EXISTING IMPROVEMENTS IN CONFLICT WITH PROPOSED IMPROVEMENTS SHALL BE REMOVED IN ITS ENTIRETY UNLESS NOTED OTHERWISE.
 2. CONFLICTING STRIPING SHALL BE REMOVED WITH A METHOD ACCEPTABLE TO THE CITY ENGINEER
 3. STRIPING TO BE PER CALTRANS STANDARD PLANS AND CA MUTCD, LATEST EDITIONS.



MARK	DESCRIPTION	ISSUE	DATE	INITIAL



CITY OF SOUTH SAN FRANCISCO
DEPT OF PUBLIC WORKS
315 MAPLE AVE.
SOUTH SAN FRANCISCO
CA. 94080

**PRELIMINARY
NOT FOR CONSTRUCTION**

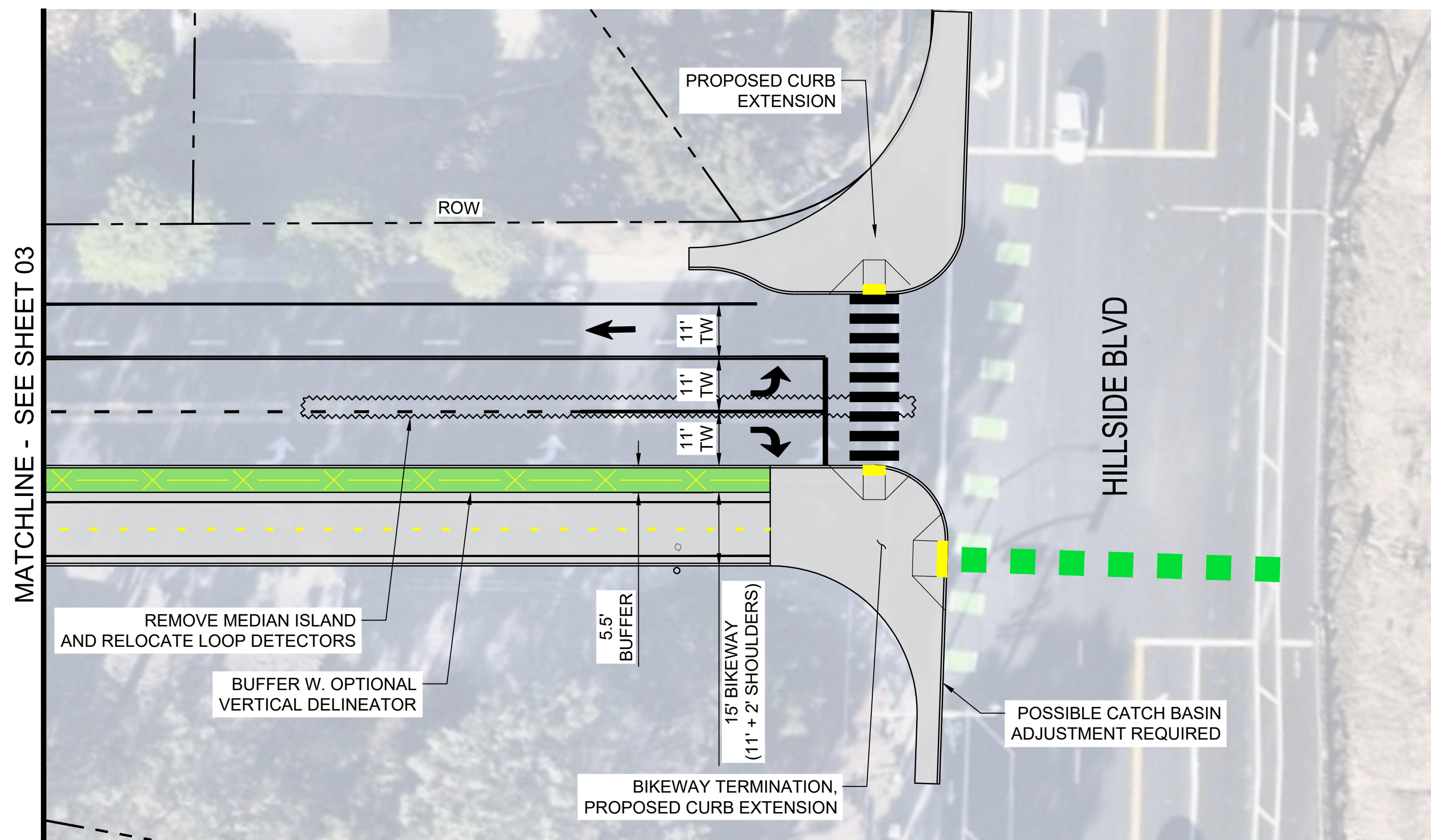


PROJECT NO: 2600612
DESIGNED BY: DHM
DRAWN BY: DHM
REVIEWED BY: KK
DATE: 5.21.2026
SCALE: AS SHOWN

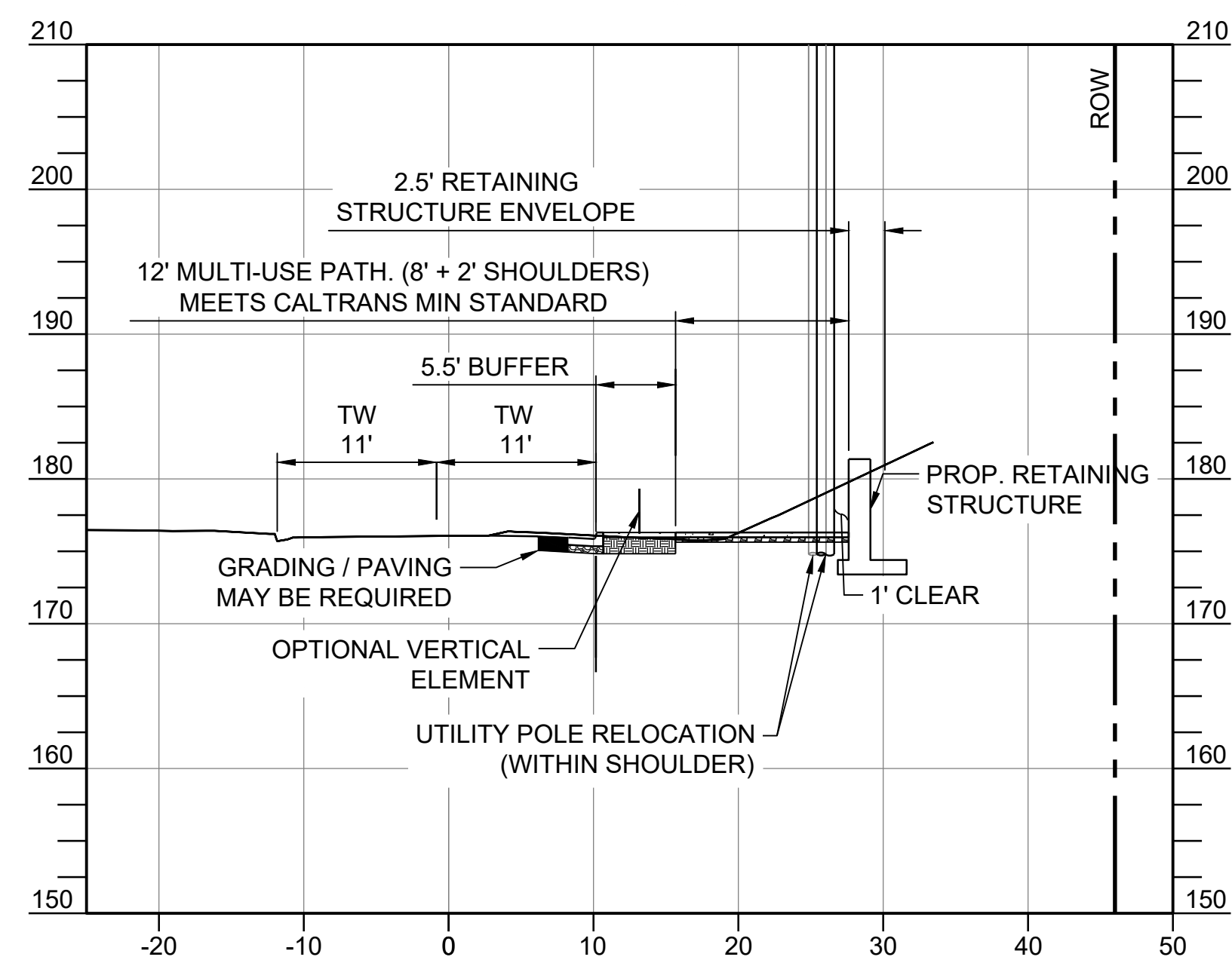
Chestnut Avenue Improvement Concepts
**MULTI-USE PATH
SUNSET AVENUE TO
HILLSIDE BOULEVARD**

SHEET NO.
03

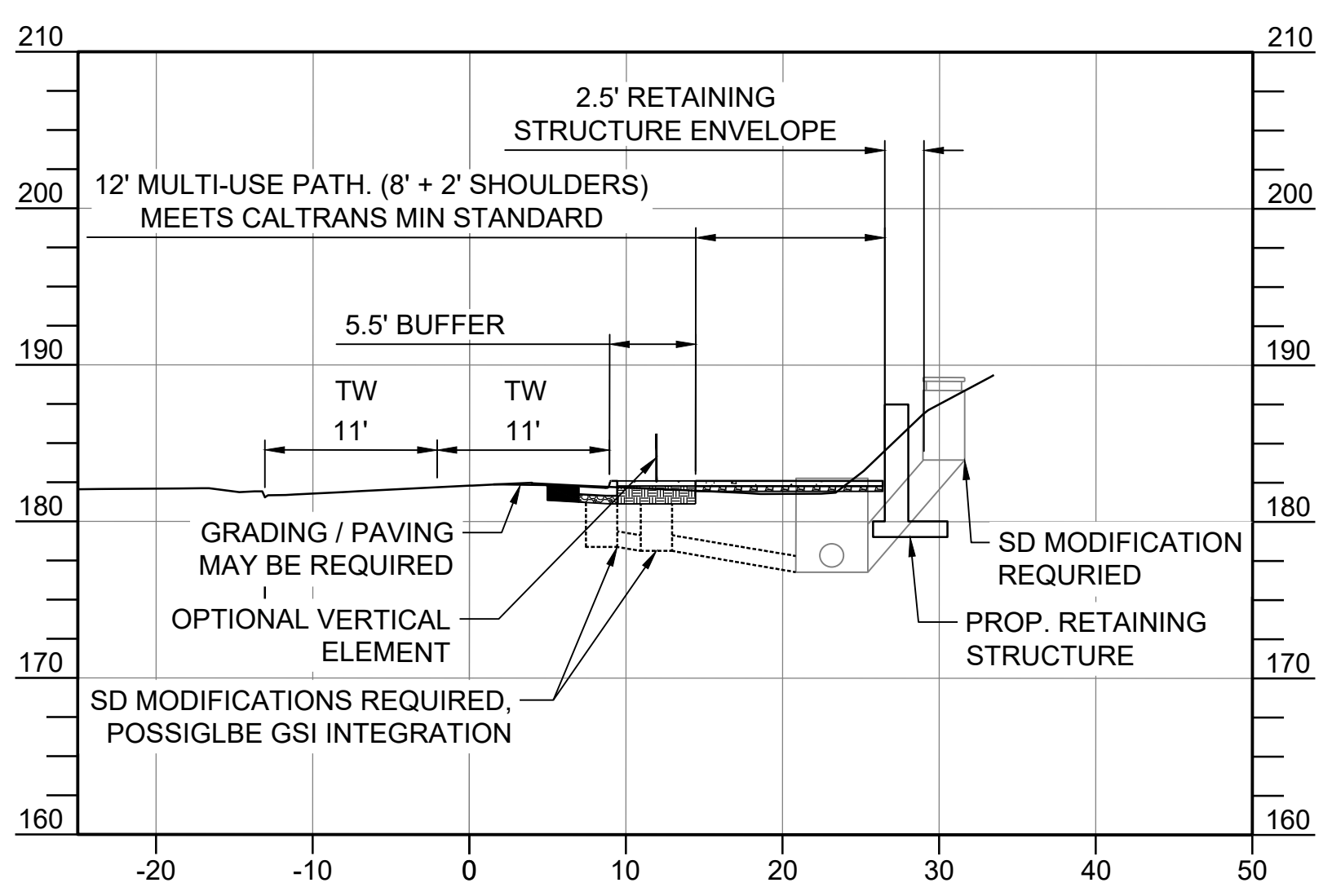
Dwg filename: N:\Shared\PROJECTS\2600612_South San Fran Chestnut Ave. Concepts\CAD\01_Plans\2600612_PLN_Chestnut Extension Concepts.dwg Last saved by: DanielleMcLaron Plot date: 5/21/2026 3:41 PM Plotstyle table: ALTA.NCS Standard.sbt



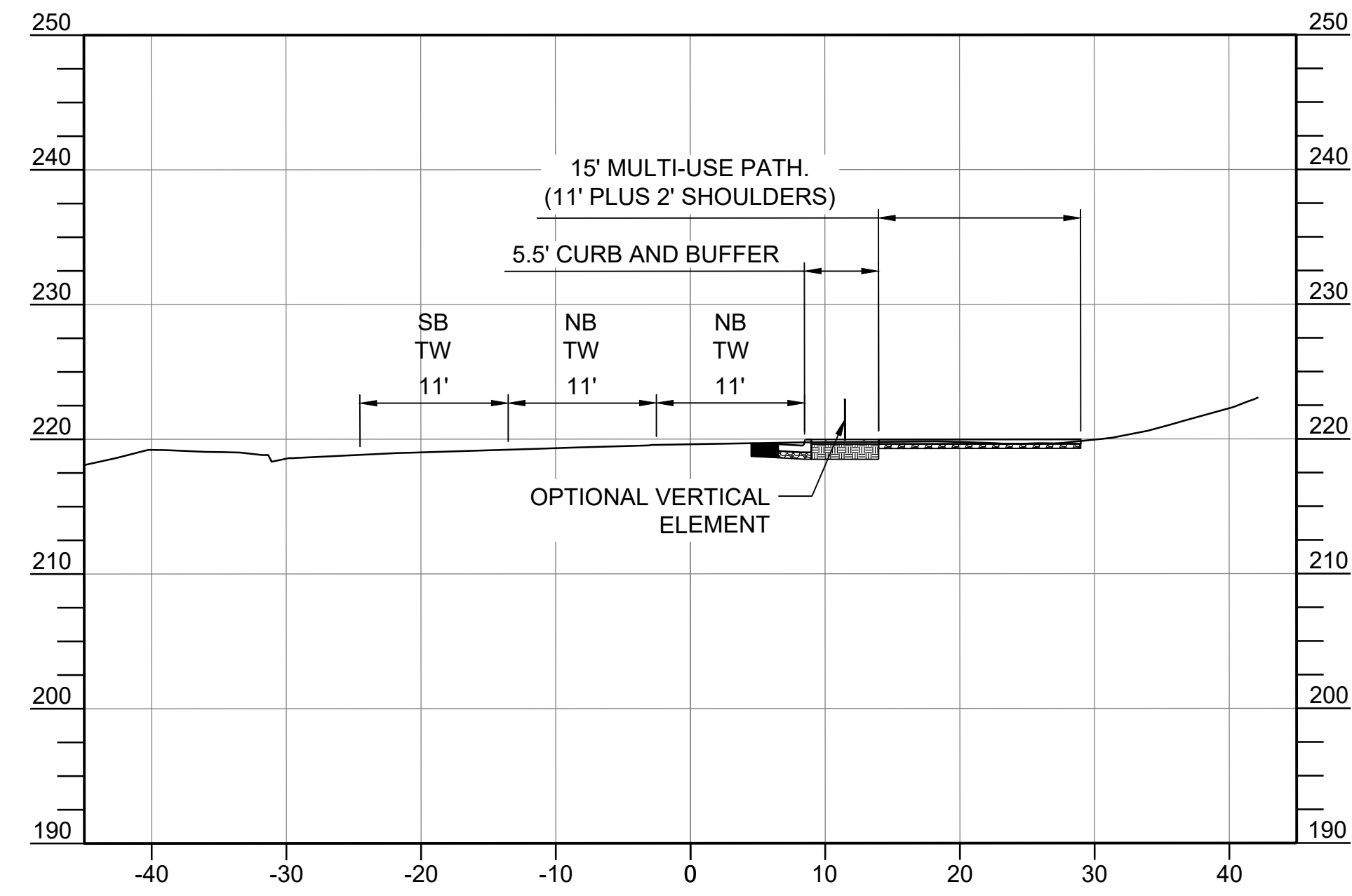
- NOTES:**
1. ALL WORK AND CONSTRUCTION ACTIVITIES SHALL BE CONFIRMED WITHIN THE PUBLIC RIGHT OF WAY. EXISTING IMPROVEMENTS IN CONFLICT WITH PROPOSED IMPROVEMENTS SHALL BE REMOVED IN ITS ENTIRETY UNLESS NOTED OTHERWISE.
 2. CONFLICTING STRIPING SHALL BE REMOVED WITH A METHOD ACCEPTABLE TO THE CITY ENGINEER
 3. STRIPING TO BE PER CALTRANS STANDARD PLANS AND CA MUTCD, LATEST EDITIONS.



1 SECTION A
HORIZ. 1" = 10', VERT. 1" = 10'



1 SECTION B
HORIZ. 1" = 10', VERT. 1" = 10'



1 SECTION C
HORIZ. 1" = 10', VERT. 1" = 10'

MARK	DESCRIPTION	ISSUE	DATE	INITIAL



CITY OF SOUTH SAN FRANCISCO
DEPT OF PUBLIC WORKS
315 MAPLE AVE.
SOUTH SAN FRANCISCO
CA. 94080

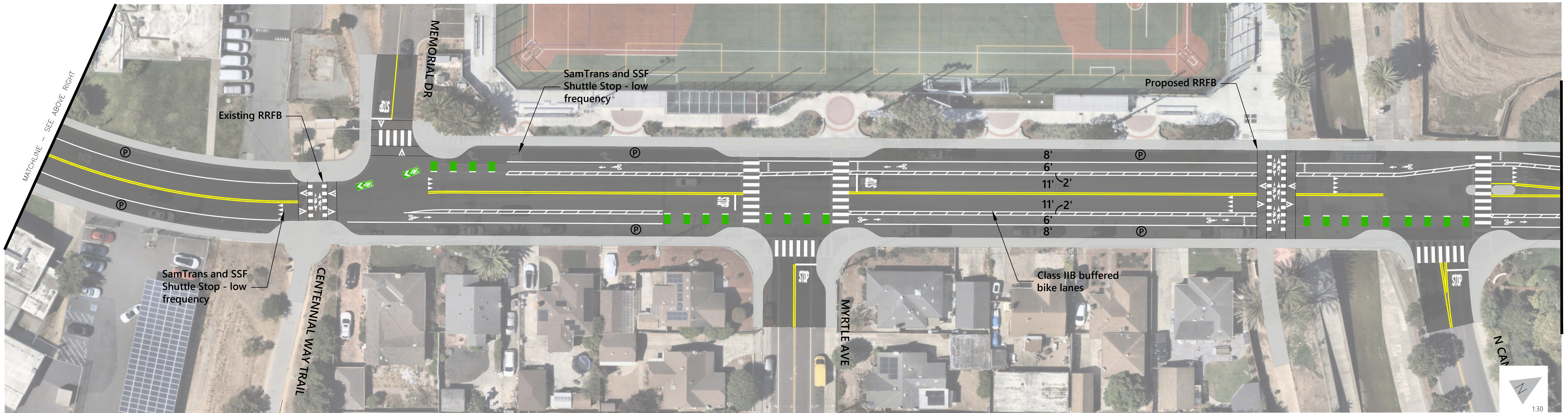
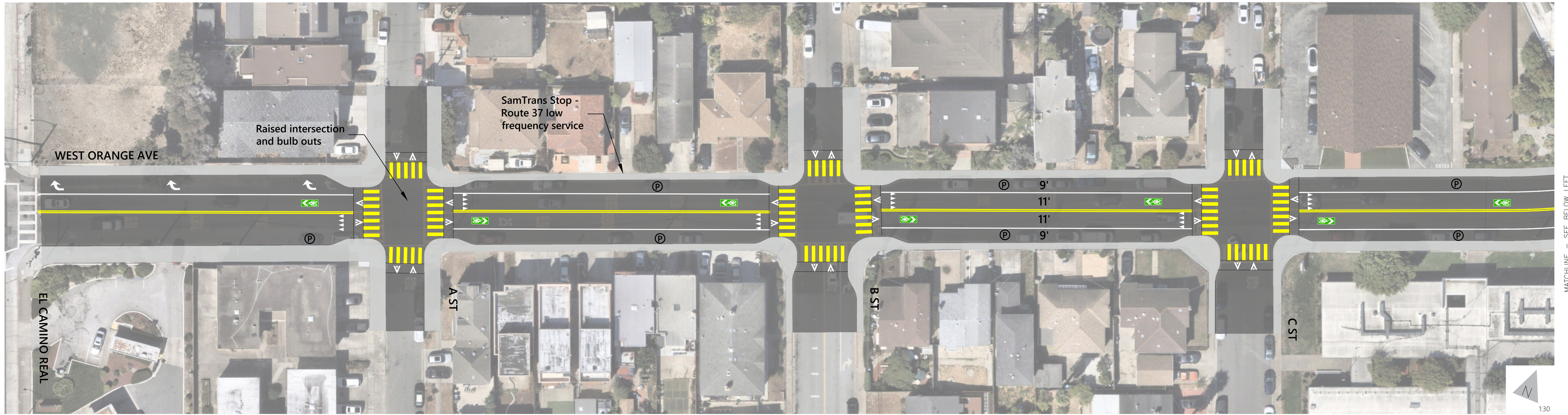
**PRELIMINARY
NOT FOR CONSTRUCTION**



PROJECT NO: 2600612
DESIGNED BY: DHM
DRAWN BY: DHM
REVIEWED BY: KK
DATE: 5.21.2026
SCALE: AS SHOWN

Chestnut Avenue Improvement Concepts
**MULTI-USE PATH
SUNSET AVENUE TO
HILLSIDE BOULEVARD**

SHEET NO.
04

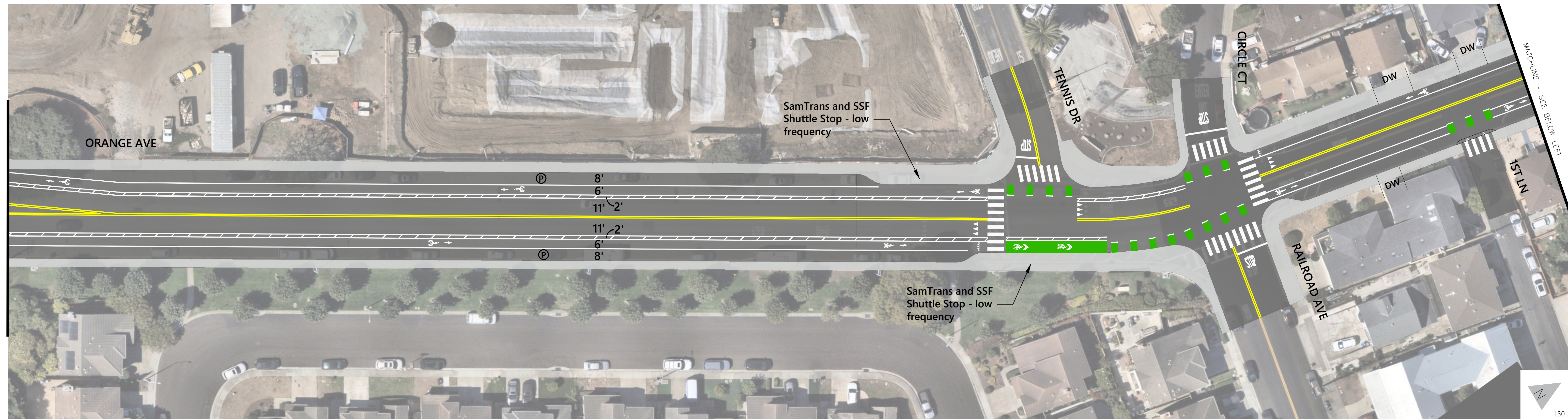


CONCEPTUAL - NOT FOR CONSTRUCTION. ADDITIONAL DETAILED ANALYSIS AND ENGINEERING DESIGN REQUIRED.

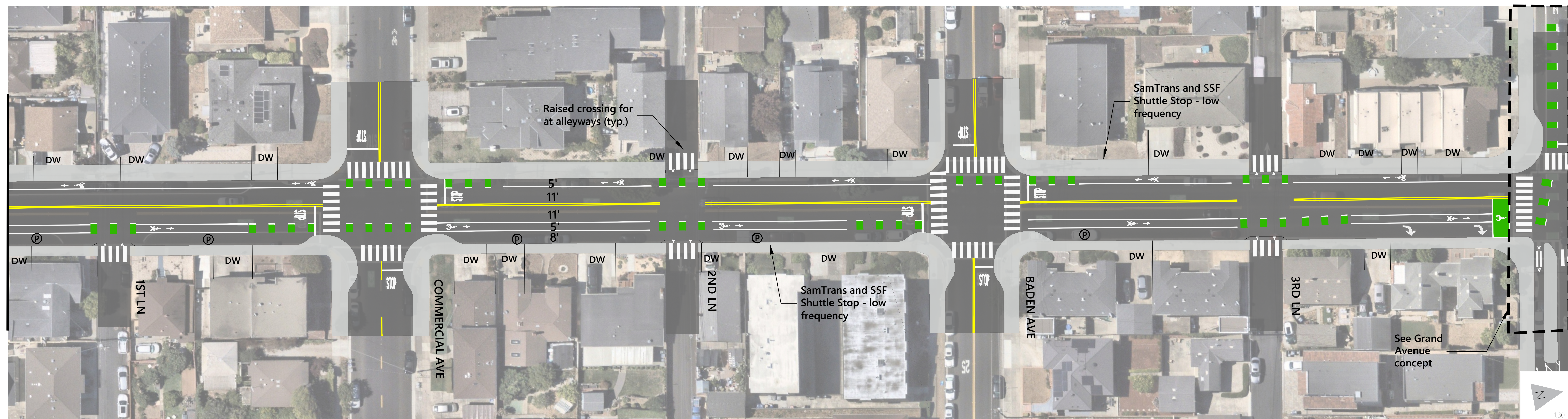
Figure 6.1 - Orange Avenue

Alternative 1
South San Francisco East 101 Complete Streets

MATCHLINE - SEE PREVIOUS SHEET



MATCHLINE - SEE ABOVE RIGHT

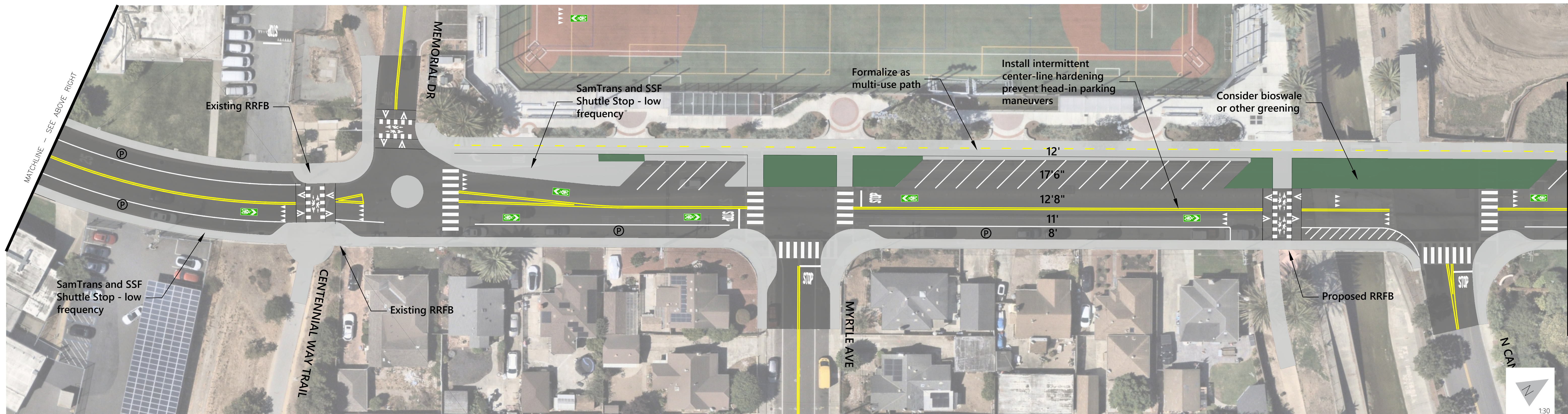
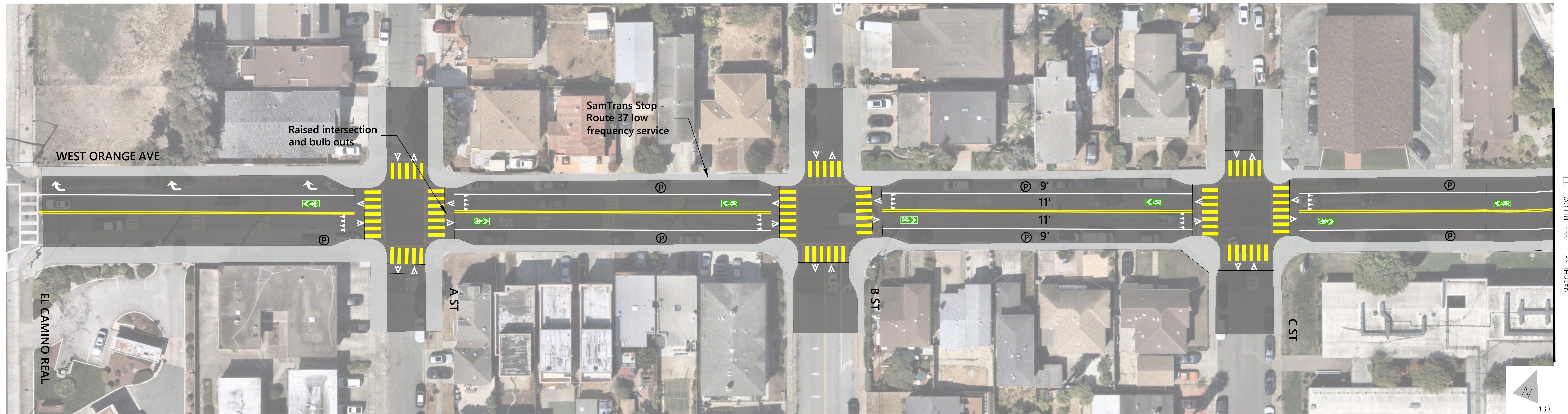


CONCEPTUAL - NOT FOR CONSTRUCTION. ADDITIONAL DETAILED ANALYSIS AND ENGINEERING DESIGN REQUIRED.

Figure 6.2 - Orange Avenue

Alternative 1
South San Francisco East 101 Complete Streets

Dec 04, 2025 C:\pbox\Box\Projects\SF\Projects\SF23-1339_04_West_of_101_CompleteStreets\CAD\Borch 2 - Orange Hickey Hillside\Orange\1339_04-Concept-Orange-Alt1.dwg



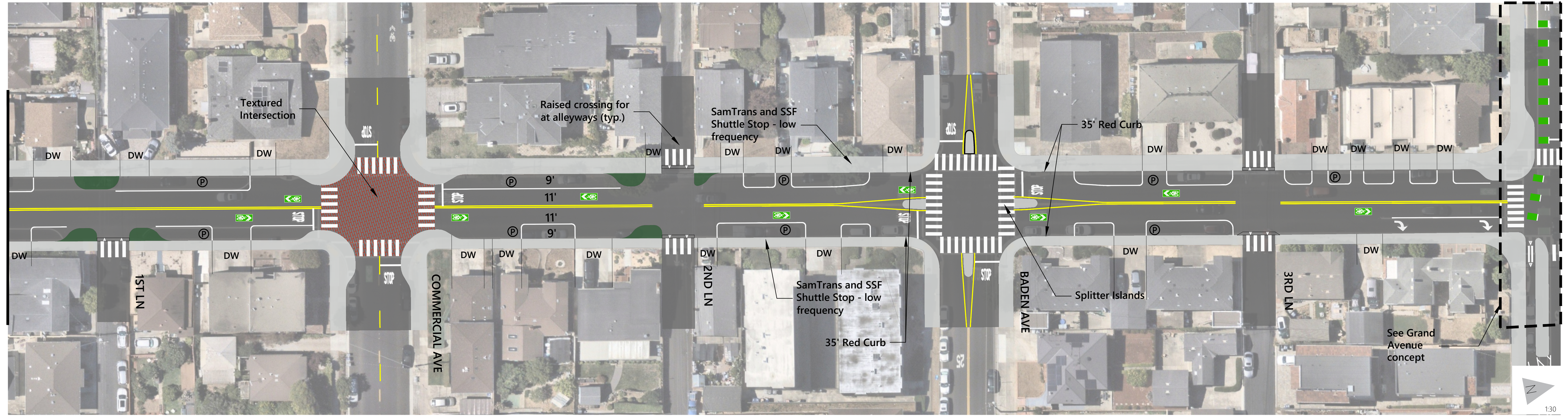
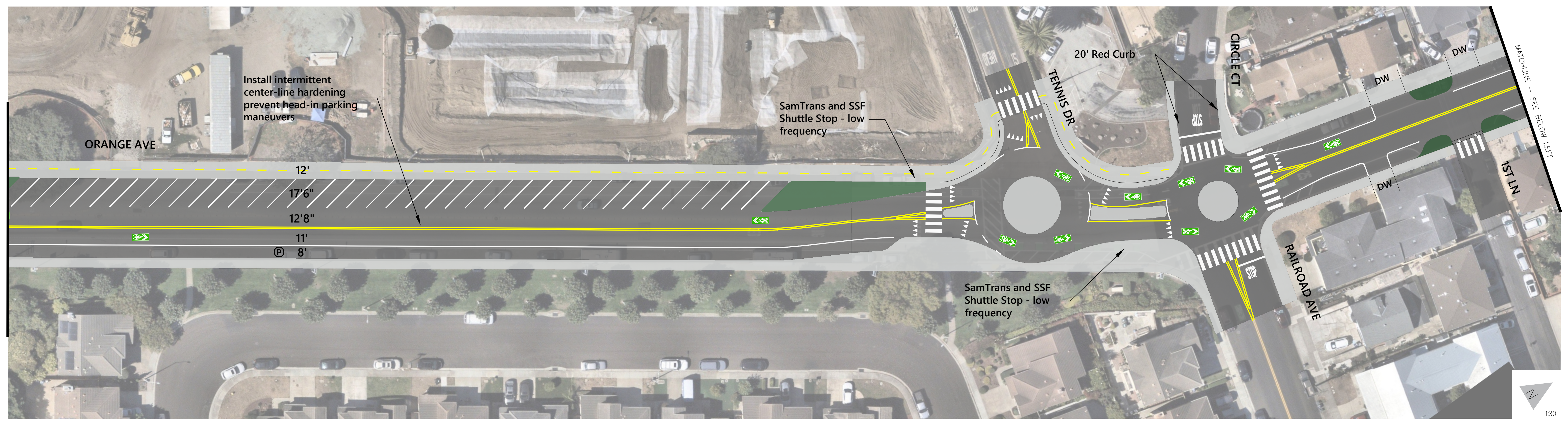
CONCEPTUAL - NOT FOR CONSTRUCTION. ADDITIONAL DETAILED ANALYSIS AND ENGINEERING DESIGN REQUIRED.

Figure 6.3 - Orange Avenue
Alternative 2
South San Francisco East 101 Complete Streets

C:\p\p\p\Box\Projects\SF\Projects\SF-Projects\2023_Sf-Projects\1339_04_West_of_101_CompleteStreets\CAD\Borch 2 - Orange Hickey Hillside\Orange\1339_04_Concept-Orange-Alt2.dwg
Dec 04, 2025

MATCHLINE - SEE PREVIOUS SHEET

MATCHLINE - SEE ABOVE RIGHT



CONCEPTUAL - NOT FOR CONSTRUCTION. ADDITIONAL DETAILED ANALYSIS AND ENGINEERING DESIGN REQUIRED.

Figure 6.4 - Orange Avenue
Alternative 2
South San Francisco East 101 Complete Streets