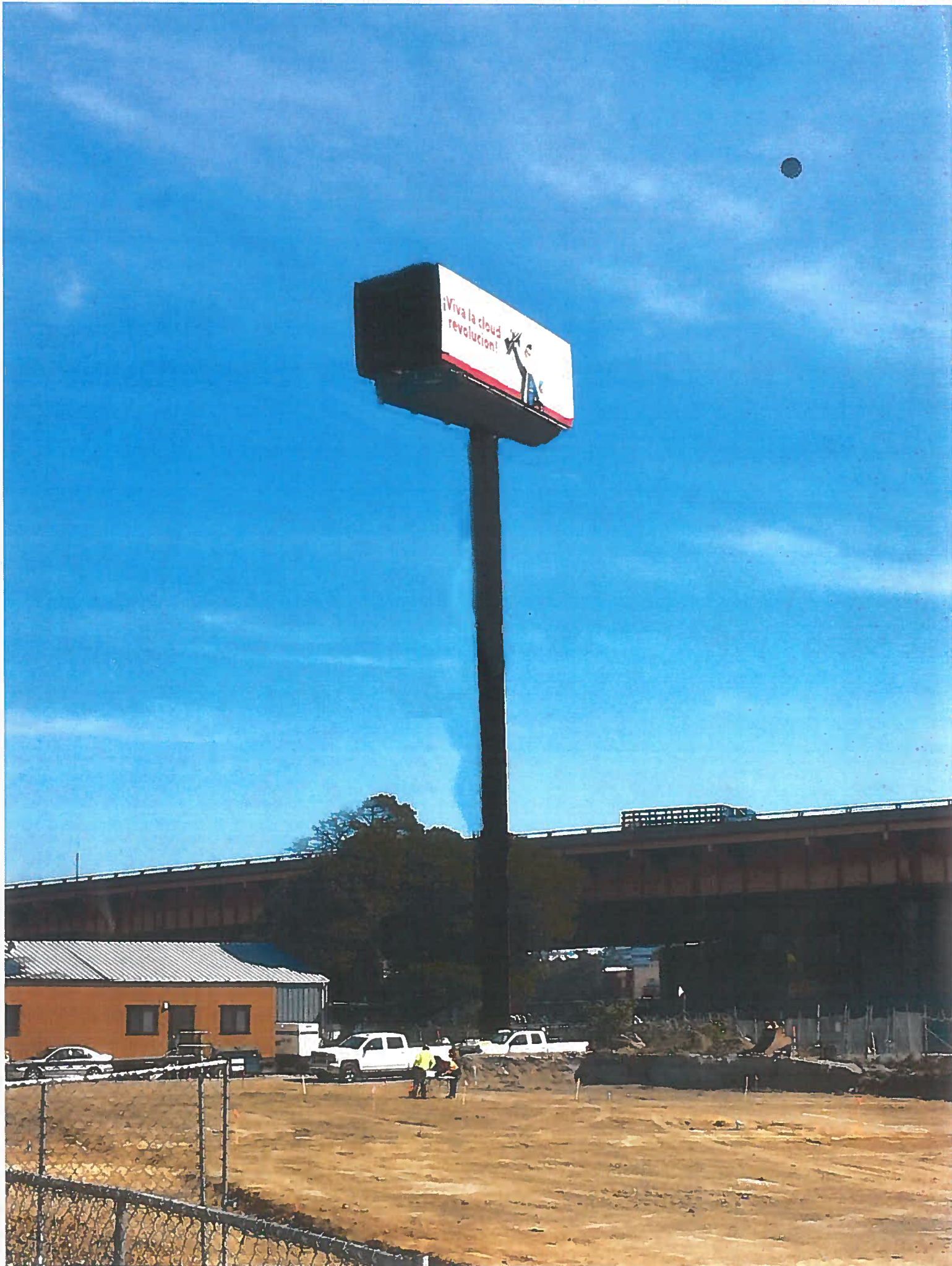


EXISTING VIEW

Exhibit B



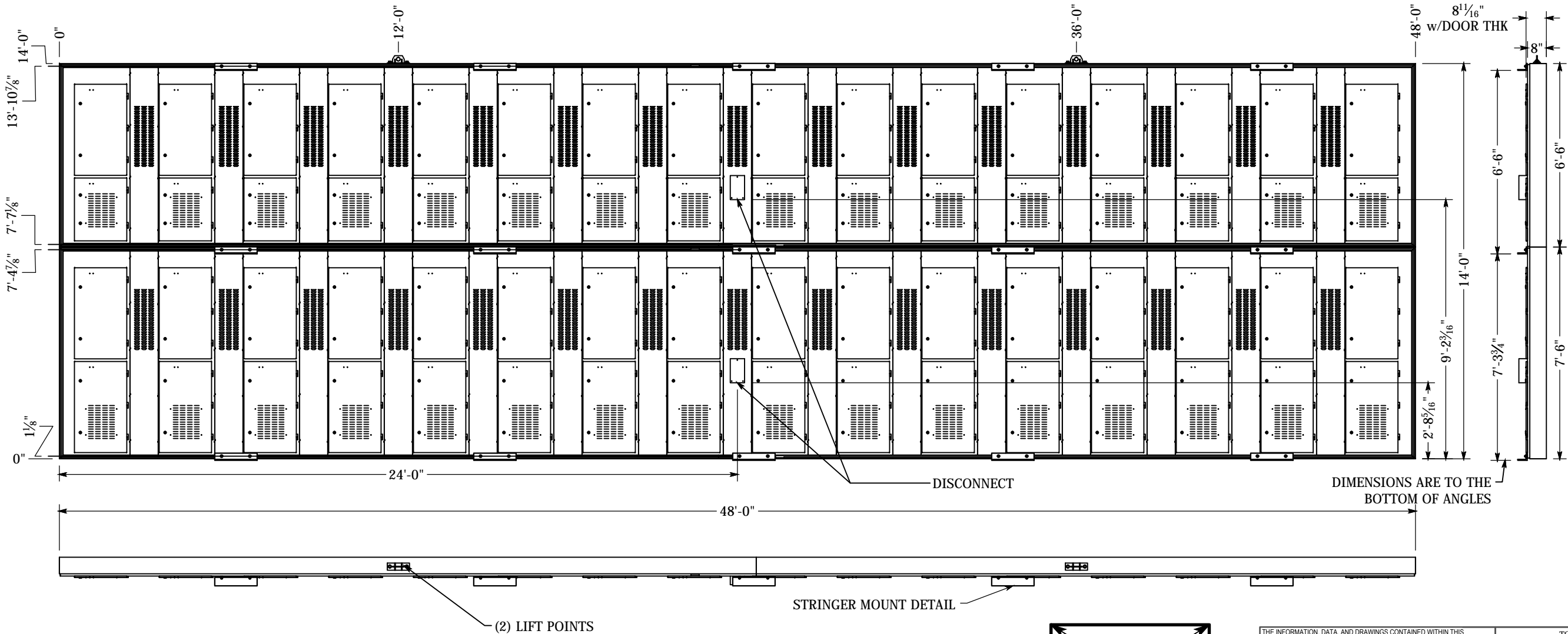






SCREEN





- GENERAL NOTES:
- All design, detailing, fabricating and construction shall conform to the following codes and specifications:
 - The California Building Code (2016 Edition).
 - American Society of Testing and Materials (ASTM) specifications.
 - Code for Welding in Building Construction of the American Welding Society.
 - Specification for the Design, Fabrication and Erection of Structural Steel for Buildings by The American Institute of Steel Construction (AISC) (Current Edition).
 - Aluminum Association Aluminum Design Manual (2010 Edition).
 - Structural Material Specifications:
 - Aluminum shapes shall be extruded from 6061-T6 alloy. Welding filler alloy shall be 4943.
 - Structural Steel and Plates shall be ASTM A-36.
 - W-Shape beams shall be (F_y=50 ksi) Minimum
 - Structural tubing shall be ASTM A-500, Grade B, (F_y=46 ksi)
 - Structural piping shall be ASTM A-53, Grade B, Type E or S, (F_y=35 ksi), ASTM A572 Grade 42 (F_y=42 ksi) or ASTM A572 Grade 50 (F_y=50 ksi). (see drawing for individual member specifications).
 - High strength bolts (if required) for connections shall be ASTM A-325, unless otherwise noted.
 - Welding electrodes shall comply with AWS D1.1-(Current Edition), E70XX.
 - Design Wind Speed, V_{ULT}= 170 MPH (ASCE 7-10) (Local Design Wind Speed Requirement V_{ULT}=110 mph) Equivalent Wind Load, P_{ASD}= 76.4 PSF @ 115'-0" above the ground (3 Sec Wind Gusts.) Exposure C Risk Category II I_p=1.0 G=0.85
 - Contractor shall verify all dimensions and conditions in the field before erection and notify the Engineer of any discrepancies.

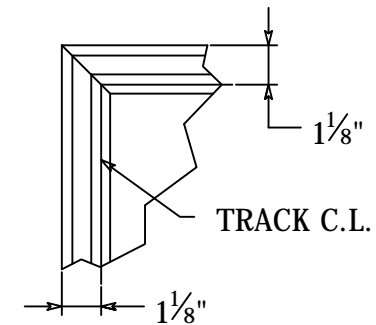
ASCE 7-10
170 MPH 3 SECOND WIND GUST
EXPOSURE C
OCCUPANCY CATEGORY II
SIGN HEIGHT ABOVE GRADE = 115 FEET MAX

REQUIREMENTS TO MEET THE ABOVE WIND LOAD
UPRIGHT QTY: 5 MINIMUM (6 PREFERABLE)
SPACING: 115 1/6" MAXIMUM
CANTILEVER: 56 1/6" MAXIMUM

THESE CALCULATIONS ASSUME THE SUPPORTING STRUCTURE (DESIGNED BY OTHERS) ALSO MEETS APPROPRIATE CODES, AND THE USE OF A WATCHFIRE PROVIDED MOUNTING SYSTEM.

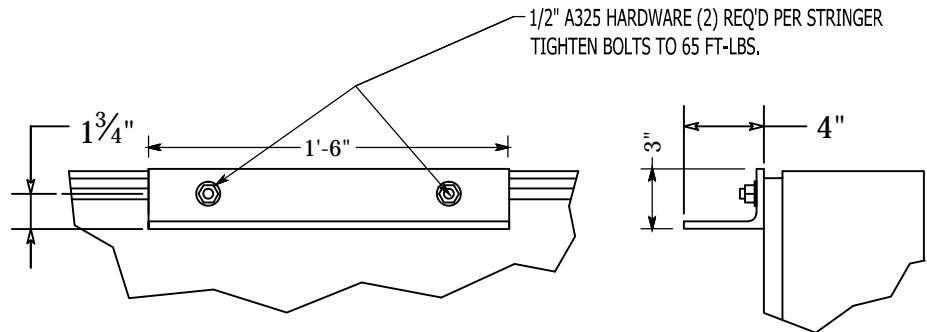
SIGN WEIGHT FOR 10mm, 16mm, 19mm, & 25mm MODELS
6048 lbs. (6720 lbs. WITH MOUNTING HARDWARE)

SIGN WEIGHT FOR 12mm MODEL
6720 lbs. (7392 lbs. WITH MOUNTING HARDWARE)

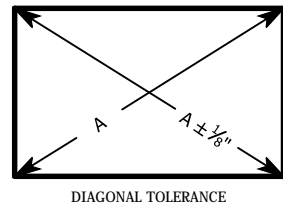


TYPICAL EDGE OF CABINET TO TRACK C.L. OFFSET

- NOTES:
- ELEVATION DIMENSIONS ARE TO CENTER LINE OF TRACK.
 - DISCONNECT BOX SIZE MAY VARY DEPENDING ON AMPERAGE
 - REQUIREMENTS IN LOCATIONS WHERE A TRACK IS DIRECTLY ABOVE ANOTHER TRACK (CABINET SEAMS). STRINGERS ARE TO BE PLACED ON THE BOTTOM TRACK.



STRINGER MOUNT DETAIL
TRACK C.L. TO MOUNTING SURFACE



- NOTES:
- ELEVATION DIMENSIONS ARE TO CENTER LINE OF TRACK.
 - DISCONNECT BOX SIZE MAY VARY DEPENDING ON AMPERAGE REQUIREMENTS.
 - I-BEAM CLAMPS ARE TO BE PLACED ON ALL TRACK LOCATIONS.

THE INFORMATION, DATA, AND DRAWINGS CONTAINED WITHIN THIS DOCUMENT ARE STRICTLY CONFIDENTIAL AND ARE PROVIDED WITH THE UNDERSTANDING THAT THEY WILL NOT BE DISCLOSED TO THIRD PARTIES WITHOUT THE PRIOR WRITTEN CONSENT OF WATCHFIRE SIGNS, LLC.

ALL INFORMATION, ILLUSTRATIONS, SCREEN SHOTS, DATA, AND DRAWINGS CONTAINED WITHIN COPYRIGHT © 2017 WATCHFIRE SIGNS, LLC., ALL RIGHTS RESERVED.

TOLERANCES	
OVERALL SIGN DIMENSION.....	±1/4"
LINEAR DIMENSION.....	± 1/16"
ANGULAR DIMENSION.....	± 1°
STRAIGHTNESS.....	± .020"/ft.

THIS DRAWING IS FOR THE PURPOSE OF PROVIDING DIMENSIONS ONLY ON WATCHFIRE PRODUCTS. ALL ELEMENTS OF THE SIGN STRUCTURE WILL BE PROVIDED BY OTHERS AND WATCHFIRE MAKES NO GUARANTEES ABOUT THE SUITABILITY OF THE STRUCTURE FOR THE SITE. ANY INFORMATION PROVIDED RELATING TO THE SIGN STRUCTURE IS FOR ILLUSTRATIVE PURPOSES ONLY.

STRINGER MOUNT CONNECTION DRAWING

NOTICE:

T.E.S. is responsible for panel frame & connection design only. Signs and all sign face attachments are the responsibility of the sign manufacturer. This drawing is for permit procurement purposes only and is for the sole use of T.E.S. and his designees. Unauthorized use is strictly prohibited.

watchfire
TIME-O-MATIC

1015 Maple Street
Danville, IL 61832
Phone: 217-442-0611
Fax: 217-442-0620
www.watchfiresigns.com

14'x48' L.E.D. Panel Structural Analysis @ 115'-0" O.A.H. (5) Upright Support @ 9'-7 3/16" on center
Location: 150 Airport Blvd., South San Francisco, CA 94080

TES

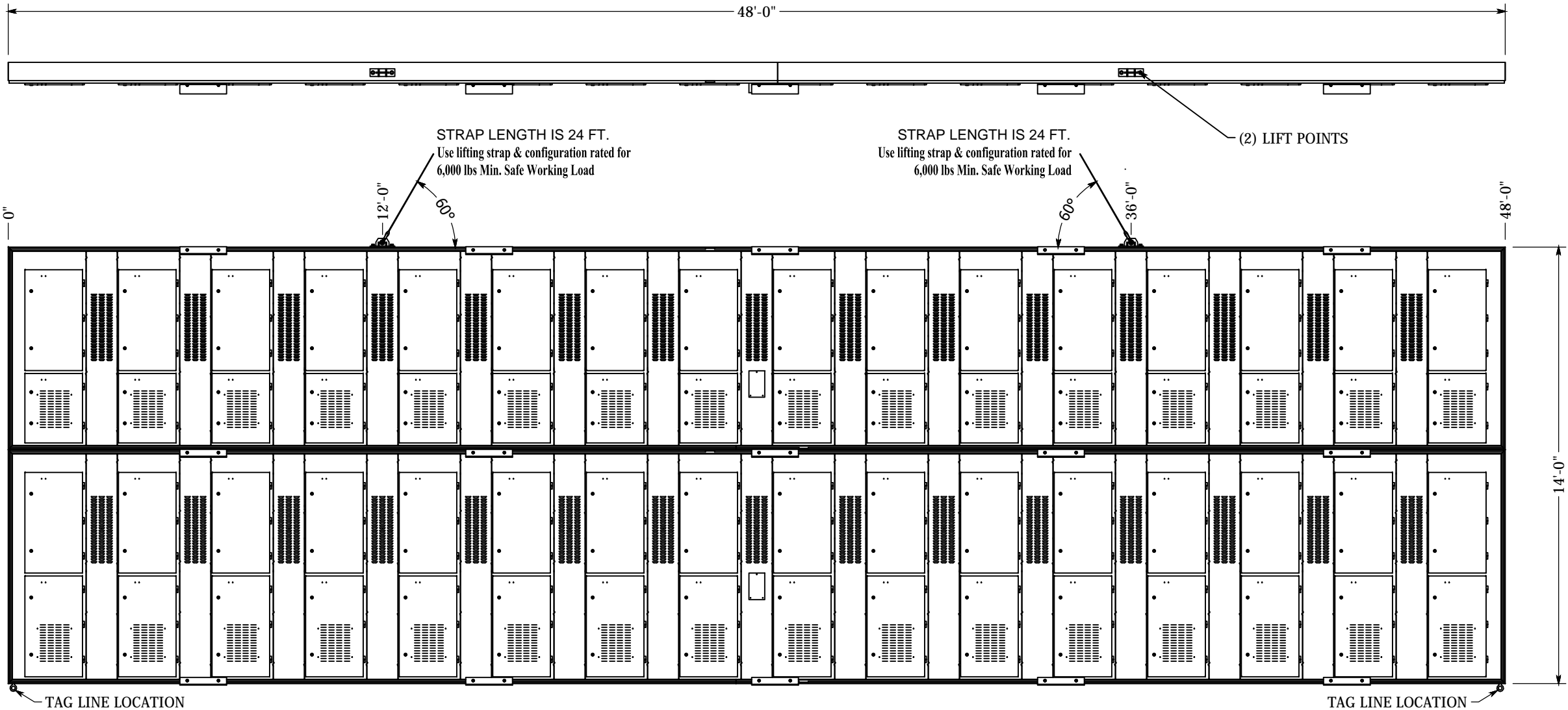
THOMPSON ENGINEERING SERVICES, LLC
Serving The Industry Since 1984
Phone: (423)781-7336 Fax: (423)781-7337
Email:engineering@tesengrs.com Website:tesengrs.com
P.O. Box 1500, Englewood, TN 37329

DRAWN BY:	D.P.Wad
DATE:	September 17, 2018
WatchFire Job#	14823
SCALE:	1/4"=1'-0"
PROJ.#	092418
DWG.#	EB-7599
SHEET#	1 of 2



This item has been electronically signed and sealed by Carl E. Thompson, Jr., P.E. using a digital signature. Printed copies of this document are not considered signed and sealed and the signature must be verified on any electronic copies.

DAMAGE TO SIGN CAN OCCUR IF PROPER LIFTING TECHNIQUES ARE NOT USED



14' x 48' DISPLAY IS APPROX.
SIGN WEIGHT FOR 10mm, 16mm, 19mm, & 25mm MODELS
6048 lbs. (6720 lbs. WITH MOUNTING HARDWARE)

SIGN WEIGHT FOR 12mm MODEL
6720 lbs. (7392 lbs. WITH MOUNTING HARDWARE)

ALL DIMENSIONS ARE IN INCHES
UNLESS OTHERWISE SPECIFIED.

LIFTING NOTES:

- 1) SPREADER BAR IS NOT REQUIRED.
- 2) RECOMMEND USE OF D-RING SHACKLES.
- 3) ONE STRAP PER LIFTING EYE.
- 4) STRAPS MUST BE RATED FOR LOAD.
- 5) RECOMMEND STRAP ANGLE IS 60°, MINIMUM OF 50° (CALCULATED @ 45°).
- 6) STRAP LENGTH IS = TO HALF THE TOTAL SIGN LENGTH.
- 7) USE THE PROVIDED EYEBOLTS ON THE BOTTOM OF THE SIGN FOR TAG LINES.



This item has been electronically signed and sealed by Carl E. Thompson, Jr., P.E. using a digital signature. Printed copies of this document are not considered signed and sealed and the signature must be verified on any electronic copies.

PANEL LIFTING DRAWING

NOTICE:
T.E.S. is responsible for panel frame & connection design only. Signs and all sign face attachments are the responsibility of the sign manufacturer. This drawing is for permit procurement purposes only and is for the sole use of T.E.S. and his designees. Unauthorized use is strictly prohibited.



1015 Maple Street
Danville, IL 61832
Phone: 217-442-0611
Fax: 217-442-0620
www.watchfiresigns.com

14'x48' L.E.D. Panel Structural Analysis @ 115'-0" O.A.H. (5) Upright Support @ 9'-7 3/16" on center
Location: 150 Airport Blvd., South San Francisco, CA 94080



THOMPSON ENGINEERING SERVICES, LLC
Serving The Industry Since 1984
Phone: (423)781-7336 Fax: (423)781-7337
Email:engineering@tesengrs.com Website:tesengrs.com
P.O. Box 1500, Englewood, TN 37329

DRAWN BY:	D.P. Ward
DATE:	September 17, 2018
WatchFire Job#	14823
SCALE:	1/4"=1'-0"
PROJ.#	092418
DWG.#	EB-7599
SHEET#	2 of 2