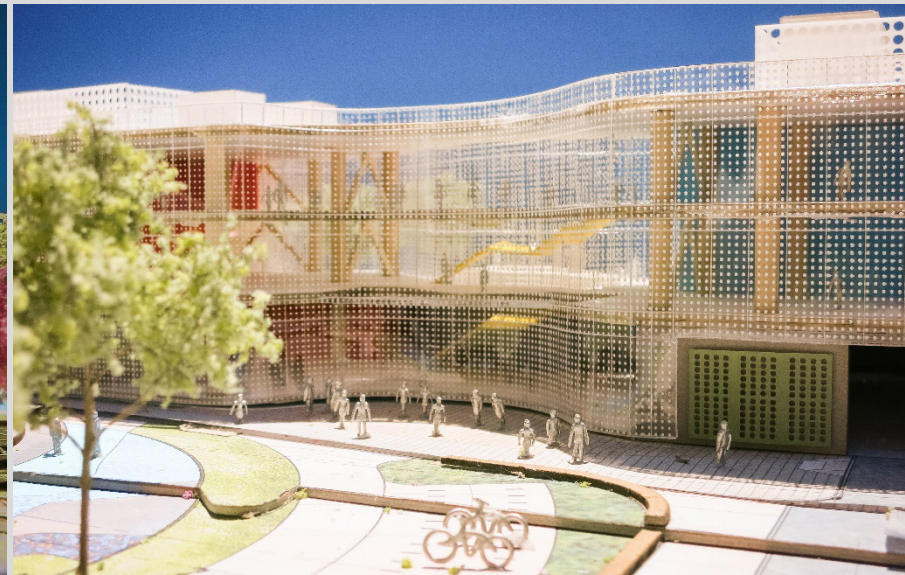




SOUTH SAN FRANCISCO MAIN CAMPUS | PROJECT UPDATE



CITY COUNCIL – JUNE 12, 2019

SMITHGROUP

AGENDA

Main Campus

- 1. Project Summary**
- 2. Building Design**
- 3. Park Design**
- 4. Multi-Modal / Parking Management Strategy**

Police Station

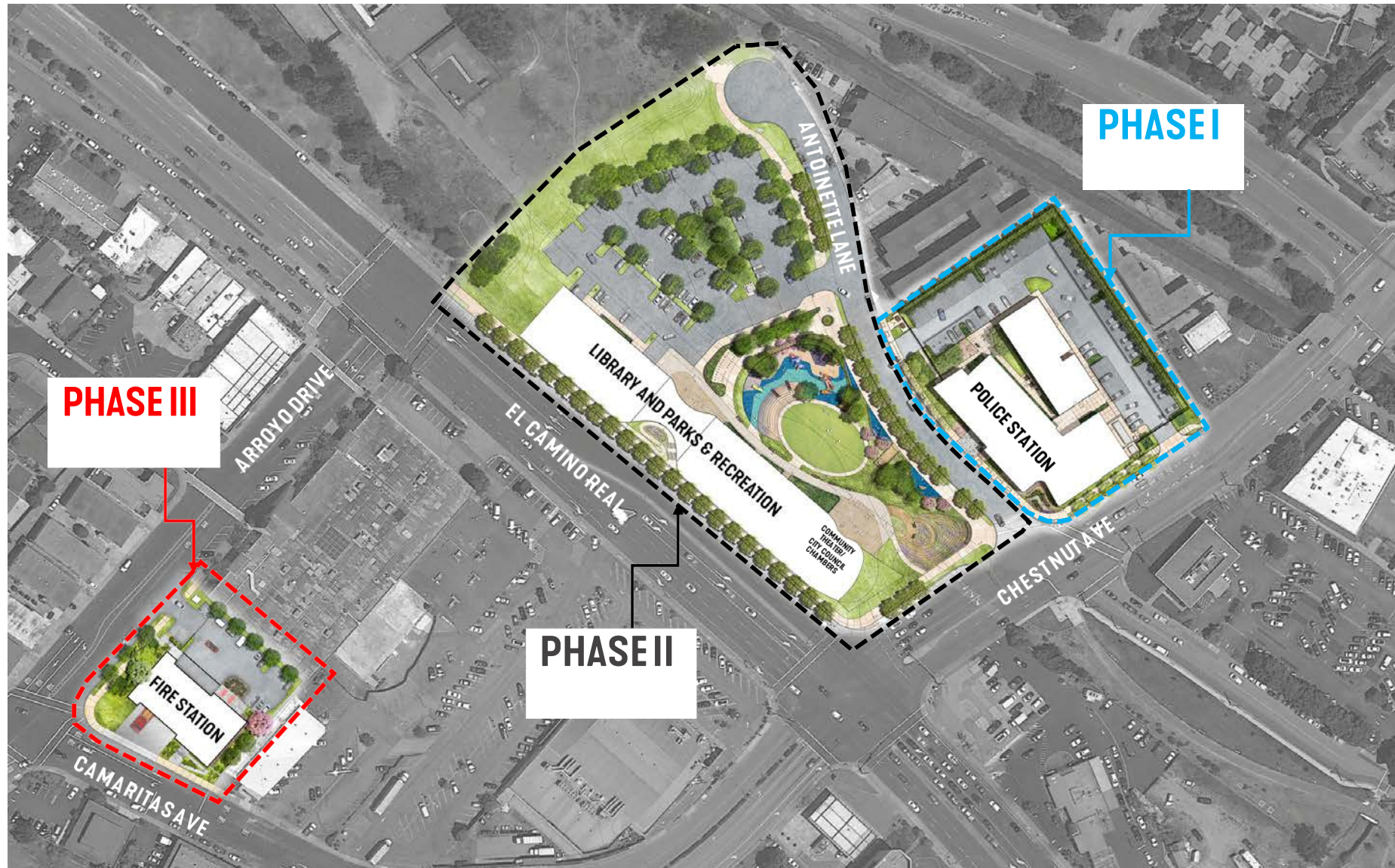
- 5. Project Update**

Fire Station

- 6. Project Update**

Community Meetings Update

COMMUNITY CIVIC CAMPUS | COMPONENT MAP



MAIN CAMPUS PROJECT SUMMARY

MAIN CAMPUS | PROJECT SUMMARY

Cost: \$120 million

Building Size: 80,000 sq ft

Library and Parks & Rec : 75,000 sqft (existing 57,120 SF)

Council Chambers: 5,000 sqft (existing 3,700SF)

Parking: 220 Spaces (existing 200spaces)

Number of Stories: 3 levels

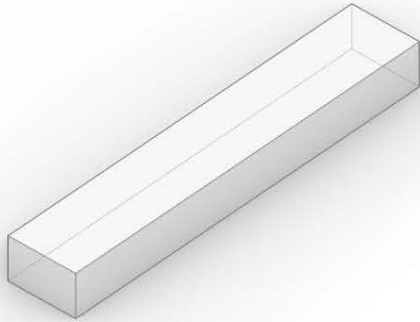
Program Elements:

- Library
- Parks & Recreation
- Community Theater / Council Chambers
- Park
- Parking

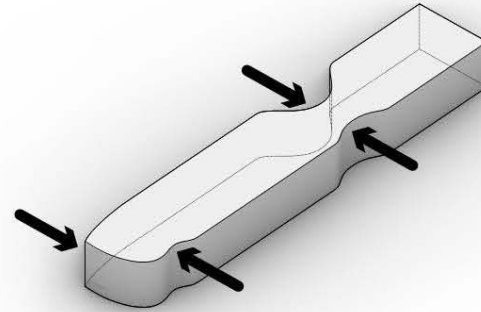


MAIN CAMPUS BUILDING DESIGN

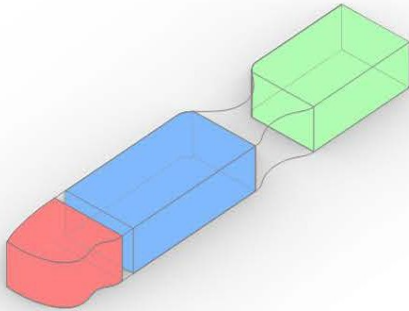
MAIN CAMPUS | BUILDING DESIGN



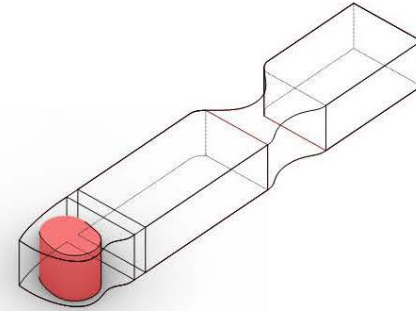
INITIAL VOLUME



INFLUENCE



PROGRAM



CHAMBER

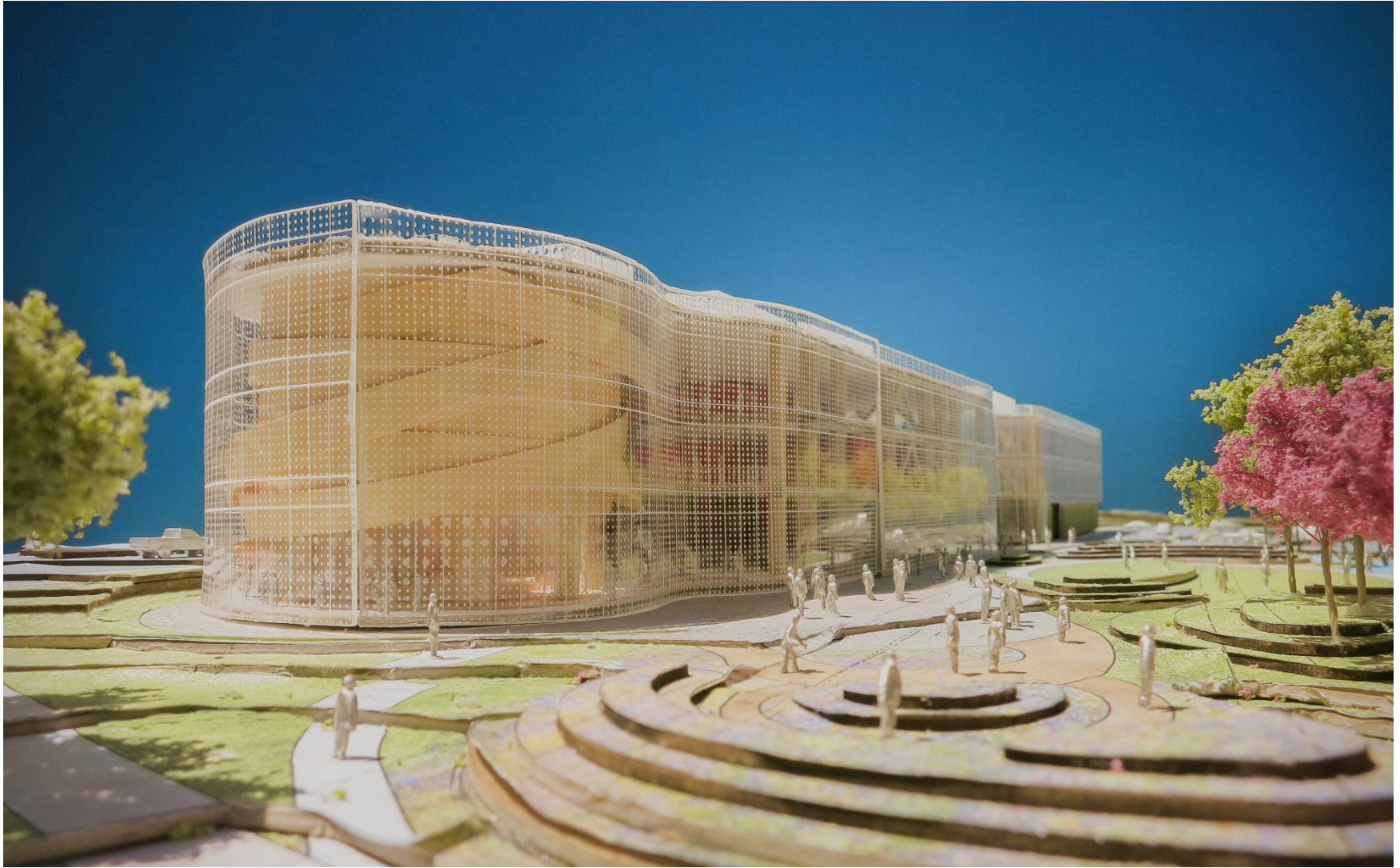
CONCEPT

MAIN CAMPUS | BUILDING DESIGN



VIEW FROM CHESTNUT AVENUE & EL CAMINO REAL

MAIN CAMPUS | BUILDING DESIGN



VIEW FROM CHESTNUT AVENUE

MAIN CAMPUS | BUILDING DESIGN



VIEW OF COUNCIL CHAMBERS



VIEW OF THE PARK-SIDE ENTRY

MAIN CAMPUS | BUILDING DESIGN



VIEW OF THE EL CAMINO REAL ENTRY

MAIN CAMPUS | BUILDING DESIGN



WITHOUT TREES



WITH TREES

VIEW FROM EL CAMINO REAL



VIEW FROM ANTOINETTE LANE



VIEW OF LIBRARY AND DISCOVERY CENTER



VIEW OF THE LIBRARY (NORTH)

EXAMPLE IMAGES | GLASS CURTAIN WALL AND CERAMIC FRIT



SFO INTERNATIONAL TERMINAL (SOM)



LOCAL CERAMIC FRIT EXAMPLES:

1. SFPUC HEADQUARTERS
SAN FRANCISCO, CA
2. CATHEDRAL OF CHRIST THE LIGHT
OAKLAND, CA
3. CITY COLLEGE OF SAN FRANCISCO
SAN FRANCISCO, CA

MAIN CAMPUS PARK DESIGN

MAIN CAMPUS | PARK SITEPLAN



LIBRARY AND PARKS & RECREATION

**COMMUNITY
THEATER/
CITY COUNCIL
CHAMBERS**

MAIN CAMPUS | LANDSCAPE PALETTE

SHADE TREES



Platanus x acerfolia 'Columbia'



Quercus agrifolia



Acer rubrum 'Armstrong'

SHADE TREES



Aesculus californica

EVERGREEN TREE



Thuja plicata

ORNAMENTAL TREES



Prunus ilicifolia



Prunus virginiana



Tristramia laurina

DECIDUOUS SHRUBS



Ceanothus thyrsiflorus



Ceanothus thyrsiflorus 'Snow Flurry'



Heteromeles arbutifolia



Eriophyllum confertiflorum



Lupinus albifrons



Rosa gymnocarpa

MAIN CAMPUS | LANDSCAPE PALETTE

PERENNIALS



Allium unifolium



Salvia spathacea



Sisyrinchium bellum



Eriophyllum lanatum



Solidago velutina ssp. californica

NATIVE GRASS AND GROUNDCOVER 1



Bromus carinatus



Deschampsia cespitosa



Festuca microstachys



Melica californica



Stipa Pulchra

BIO INFILTRATION PLANTER



Chondropetalum tectorum

STORMWATER TREATMENT AREA



Carex barbarae



Chondropetalum tectorum



Deschampsia cespitosa ssp. Holciformis



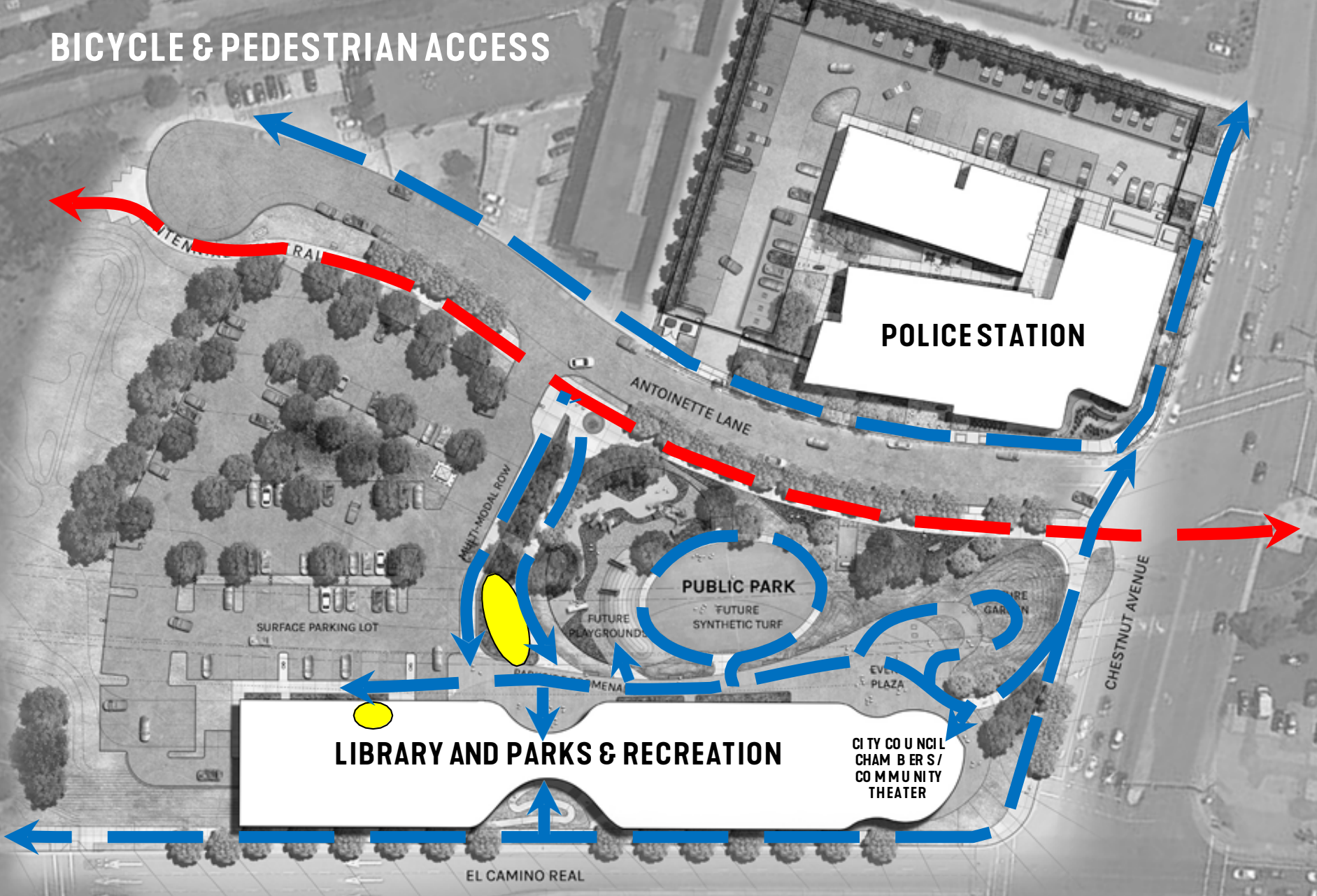
Lupinus latifolius



Sisyrinchium californicum

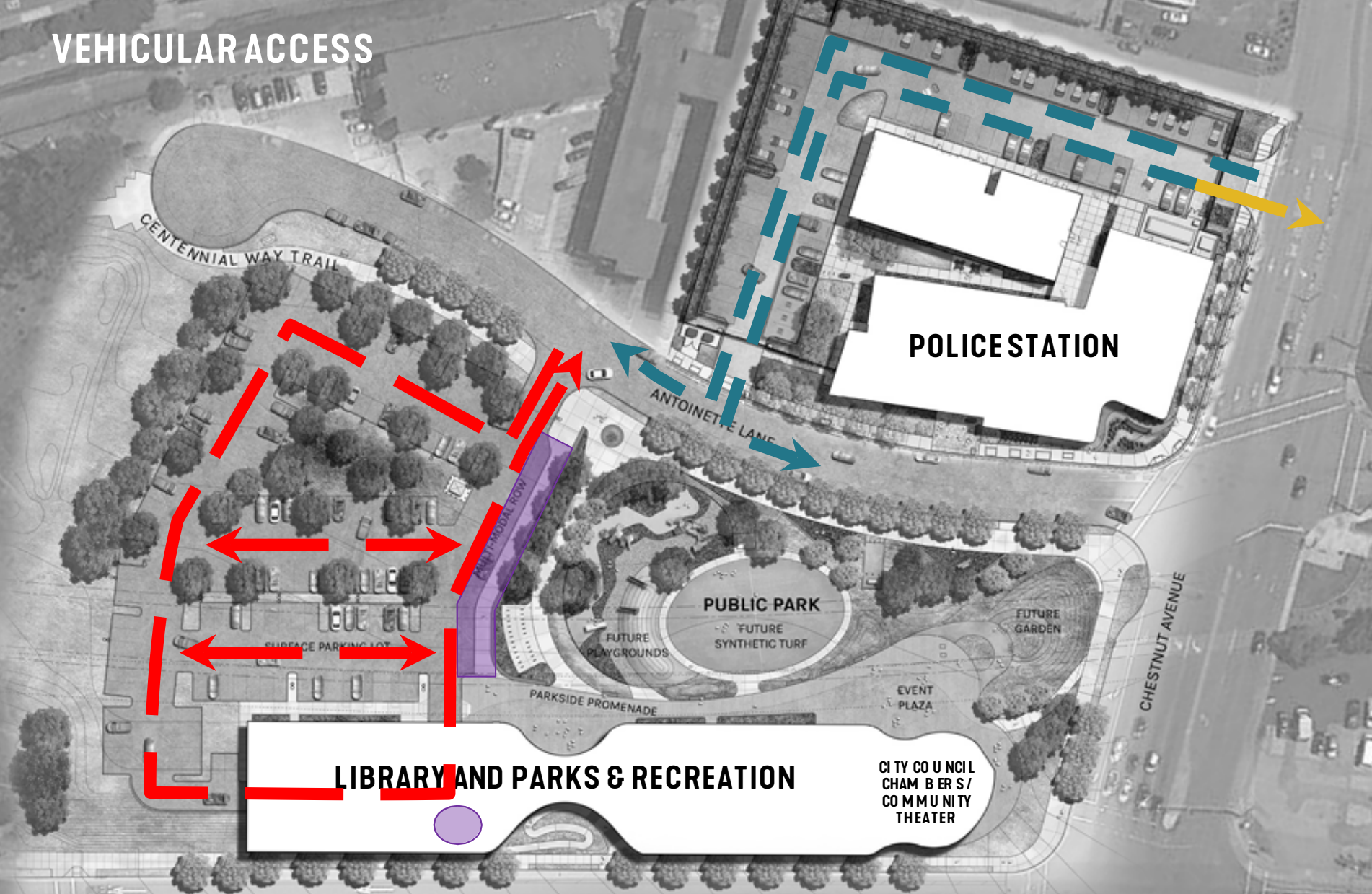
MAIN CAMPUS
MULTI-MODAL TRANSPORTATION
AND PARKING MANAGEMENT

BICYCLE & PEDESTRIAN ACCESS



Centennial Trail Pathways Bike Parking and Fix it Station

VEHICULAR ACCESS



Vehicular Circulation



Loading and Delivery



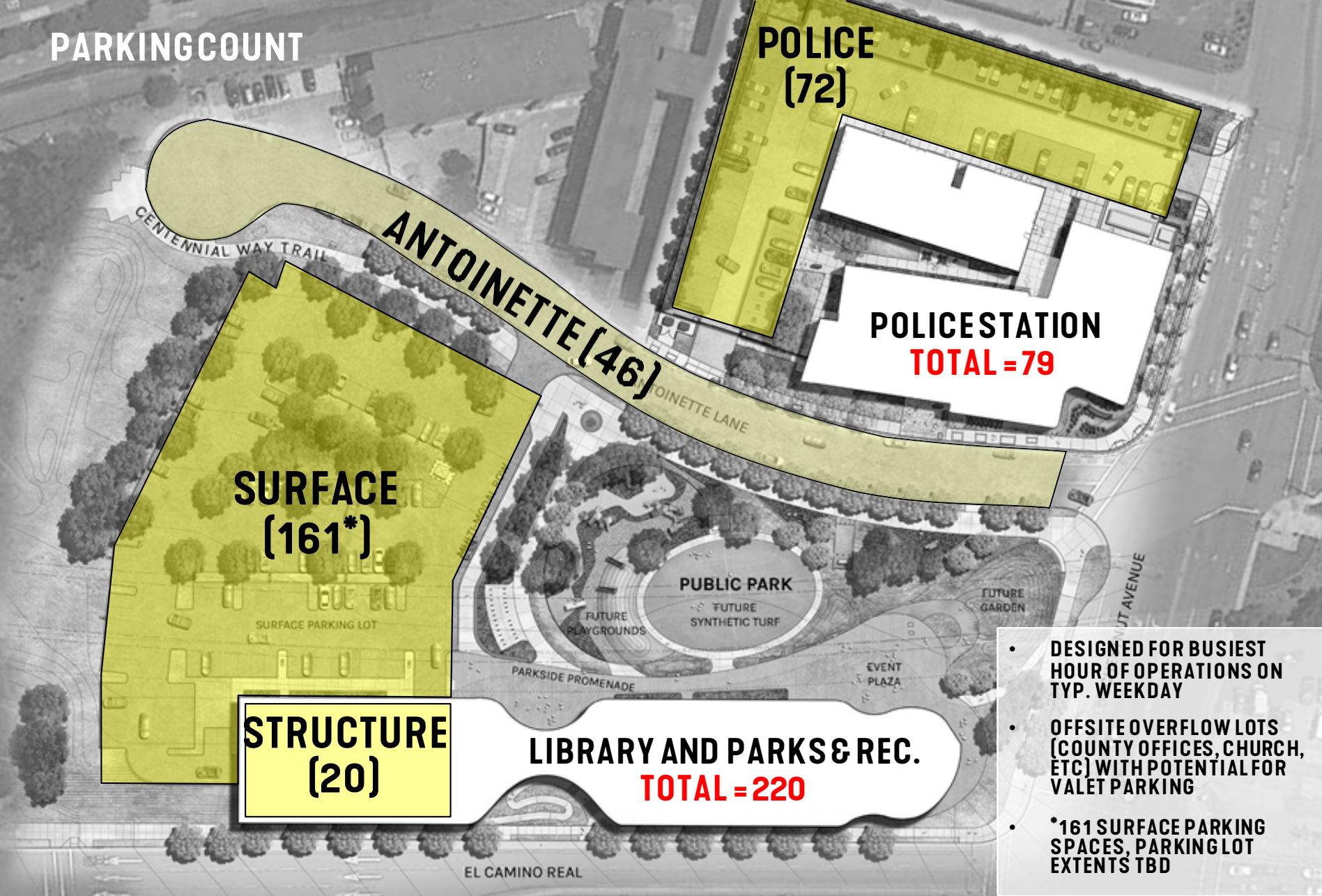
Police Circulation



Emergency



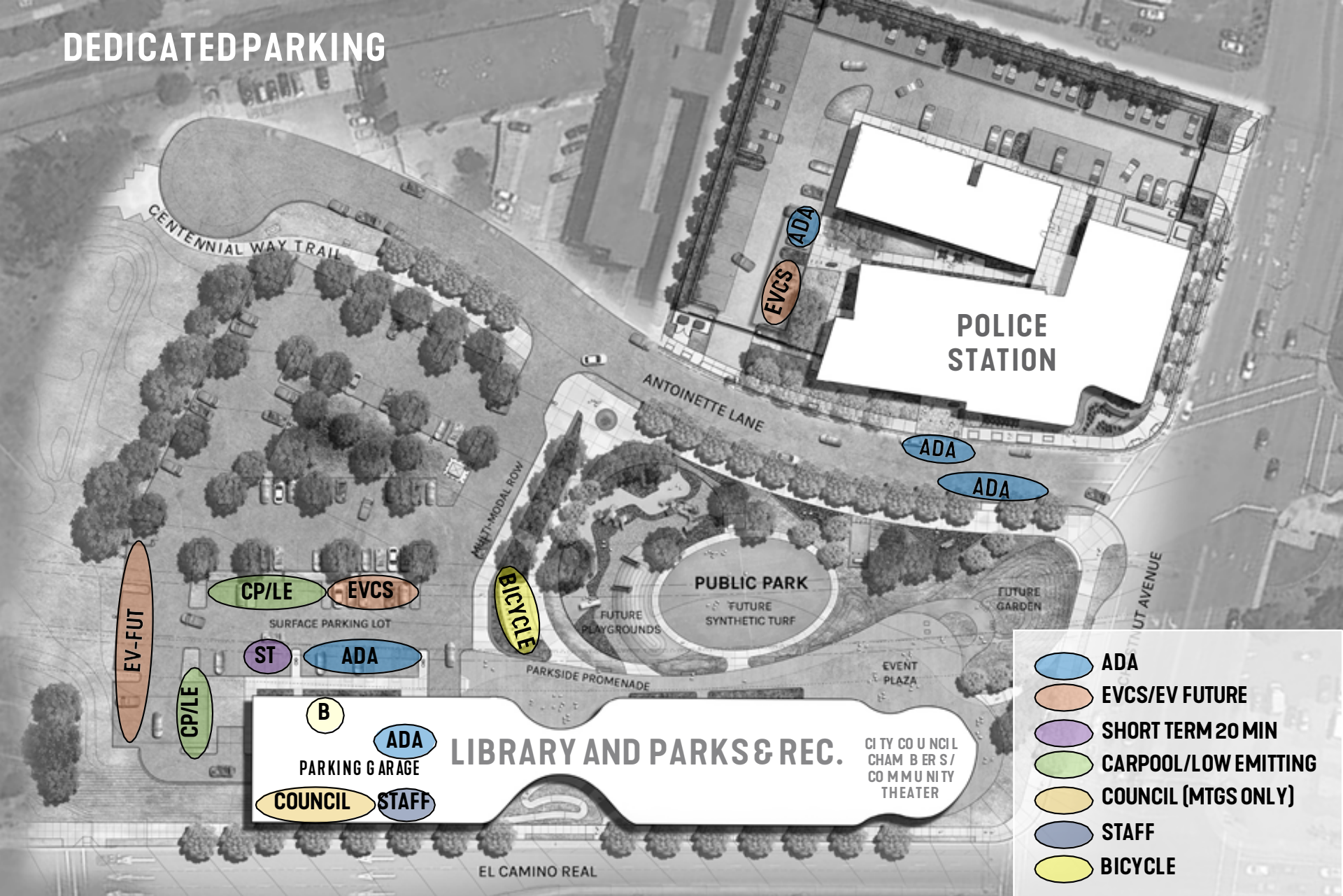
PARKINGCOUNT



- DESIGNED FOR BUSIEST HOUR OF OPERATIONS ON TYP. WEEKDAY
- OFFSITE OVERFLOW LOTS (COUNTY OFFICES, CHURCH, ETC) WITH POTENTIAL FOR VALET PARKING
- *161 SURFACE PARKING SPACES, PARKING LOT EXTENTS TBD

Parking 

DEDICATED PARKING



- ADA
- EVCS/EV FUTURE
- SHORT TERM 20 MIN
- CARPPOOL/LOW EMITTING
- COUNCIL (MTGS ONLY)
- STAFF
- BICYCLE

PARKING MANAGEMENT STRATEGY

- 1. GENERAL USER WILL HAVE 4 HR TIME LIMIT FROM 8AM TO 6PM**
- 2. STAFF WILL HAVE UNLIMITED TIME LIMIT PERMIT**
- 3. DAY PASSES WILL BE PROVIDED FOR SPECIAL EVENTS**
- 4. (4) 20 MIN SHORT TERM PARKING WILL BE PROVIDED**

POLICE STATION PROJECT UPDATE

POLICE STATION | PROJECT SUMMARY

Project Cost: \$56 million

Building Size: 45,000 sqft (existing = 31.7K sq ft)

Parking: 72 Secured Spaces (existing = 46 spaces)

Number of Stories: 2 Levels

Use: Essential Services Building

Program Elements:

Administrative Services	Records
Communications	Investigations
Property and Evidence	Patrol
Physical Training	Classroom
Firing Range	
911 Emergency Center	

Construction Start: First Quarter 2020



POLICE STATION | SITEPLAN





VIEW FROM CHESTNUT & ANTOINETTE



COMMUNITY CIVIC CAMPUS: PHASE 1 - POLICE STATION



VIEW FROM CHESTNUT



COMMUNITY CIVIC CAMPUS: PHASE 1 - POLICE STATION

FIRE STATION PROJECT UPDATE

FIRE STATION | PROJECT SUMMARY

Cost:	\$15 million	
Building Size:	8,826SF	(existing 4,300SF)
Parking:	14 Spaces	(5 spaces existing)
Number of Stories:	1 level	

Program Elements:

- Emergency Dispatch
- 3 Apparatus Bays
- Apparatus Support
- Living Areas
- Dining
- Sleeping Quarters
- Training Facilities



FIRE STATION | SITE PLAN



FIRE STATION | RENDERING



VIEW FROM CAMARITAS AVE.

COMMUNITY CIVIC CAMPUS: PHASE III - FIRE STATION

COMMUNITY MEETINGS & KEY COMMENTS

1. May 21 - Design Review Board
2. May 21 - Parks & Recreation Commission
3. May 28 - Library Board of Trustees
4. May 30 - Planning Commission
5. June 5 - Bicycle and Pedestrian Commission
6. June 5 - Citizens Oversight Committee
7. June 12 - City Council Meeting