

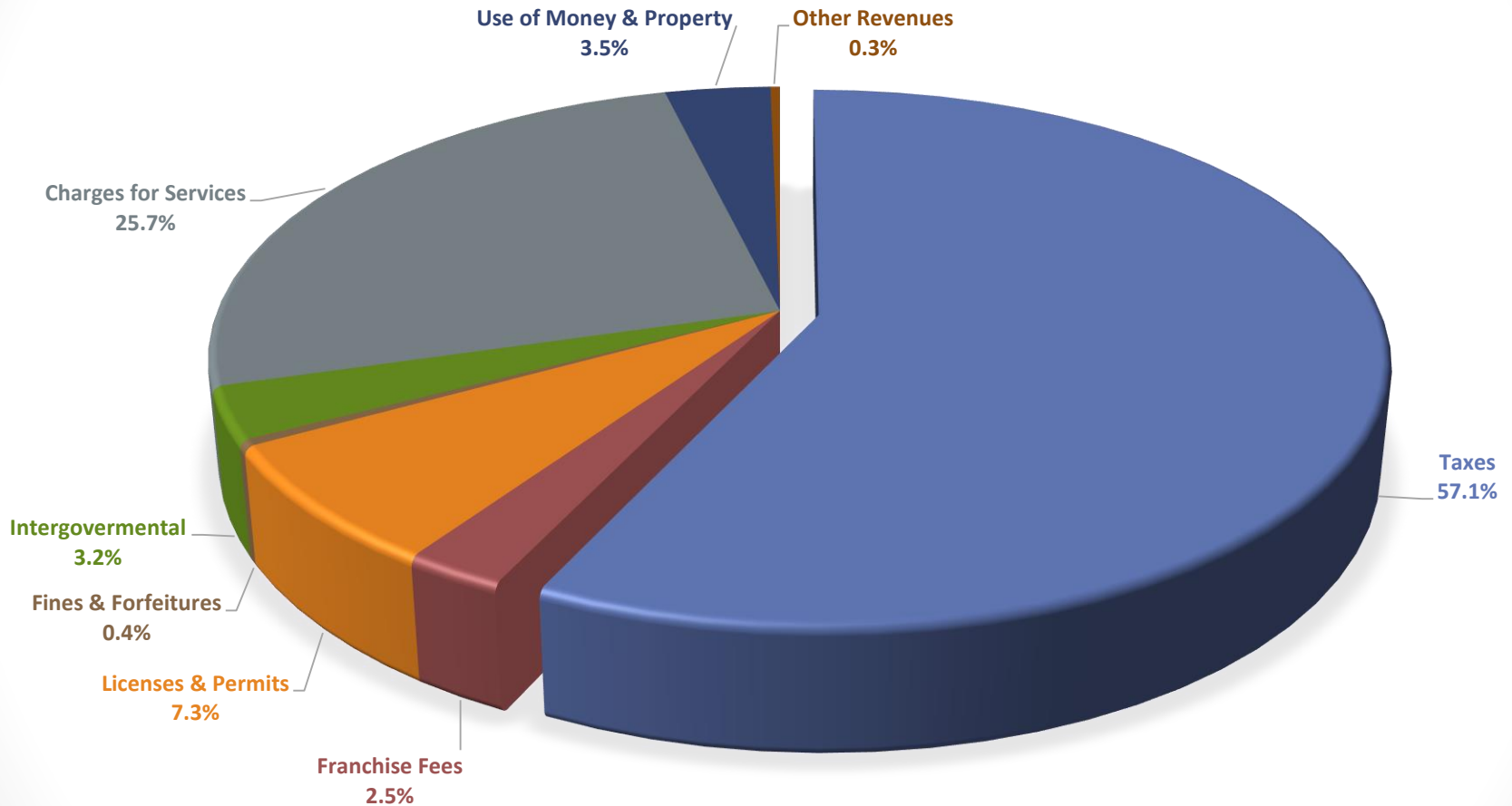
# FY 2019-21 Operating Budget Study Session

City of South San Francisco  
City Council Study Session  
May 29, 2019

# Changes to Budget

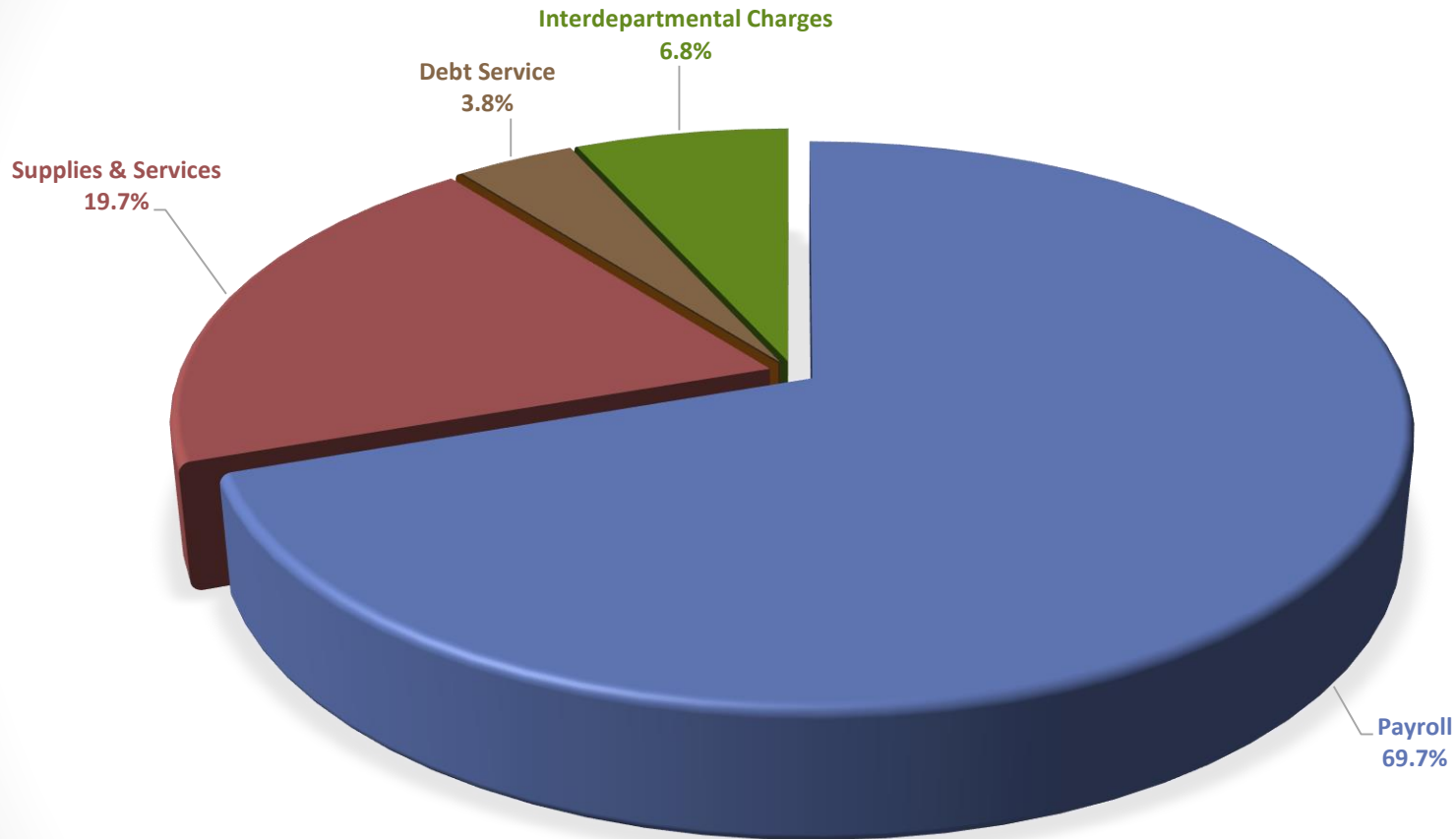
- Add Assistant City Clerk position \$160,000

# Operating Funds Revenue



*Excludes Successor Agency, Funds for which the City acts as trustee, CIP, transfers in and Internal Service Funds*

# Operating Funds Expenditure



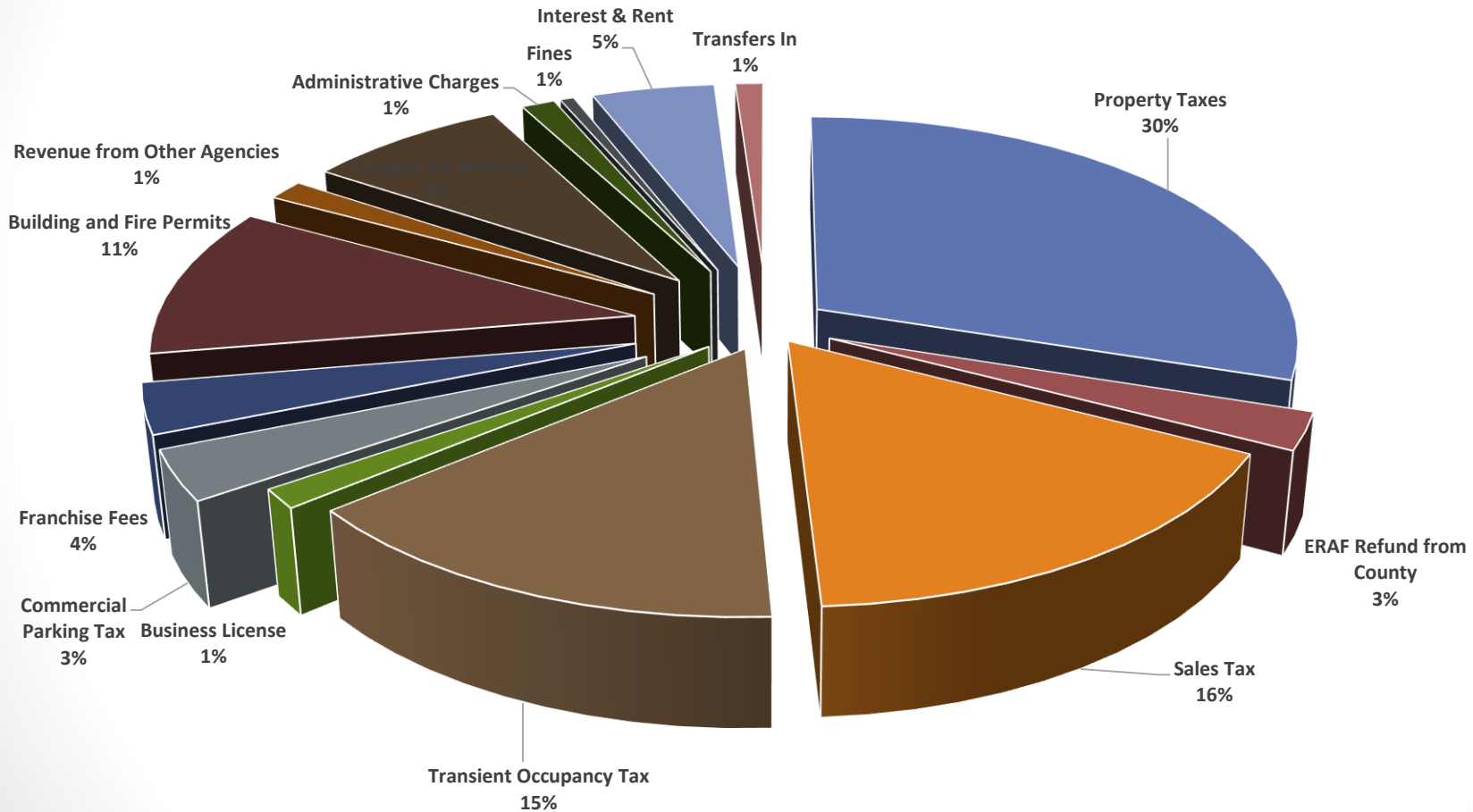
*Excludes Successor Agency, Funds for which the City acts as trustee, CIP, transfers out and Internal Service Funds*

# Adopted General Fund Summary (000s)

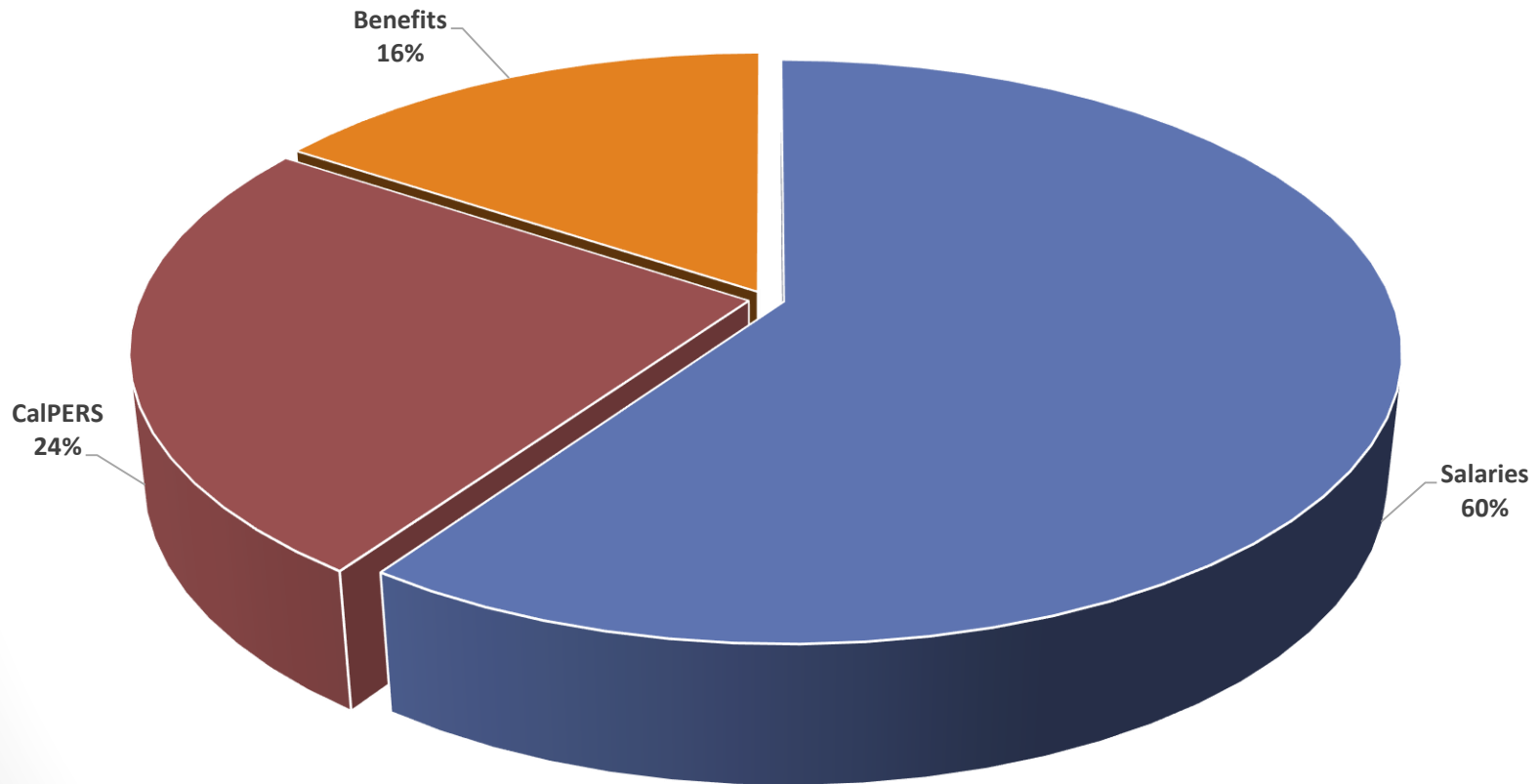
	FY18-19	FY19-20	Increase/ (Decrease)
Revenues*	\$105,390	\$112,621	\$ 7,231
Expenditures	\$105,167	\$110,351	\$ 5,184
<i>Surplus/ (Deficit)</i>	\$ 223	\$ 2,270	\$ 2,047
Net Transfers In/Out	\$ 1,282	\$ 308	(\$ 974)
<i>Reserves Contribution</i>	\$ 0	(\$ 511)	
Est. Balance to Inf. Reserve	\$ 0	\$ 2,067	

\*Excludes Transfers In and Transfers Out

# General Fund Revenues



# General Fund Salary and Benefits



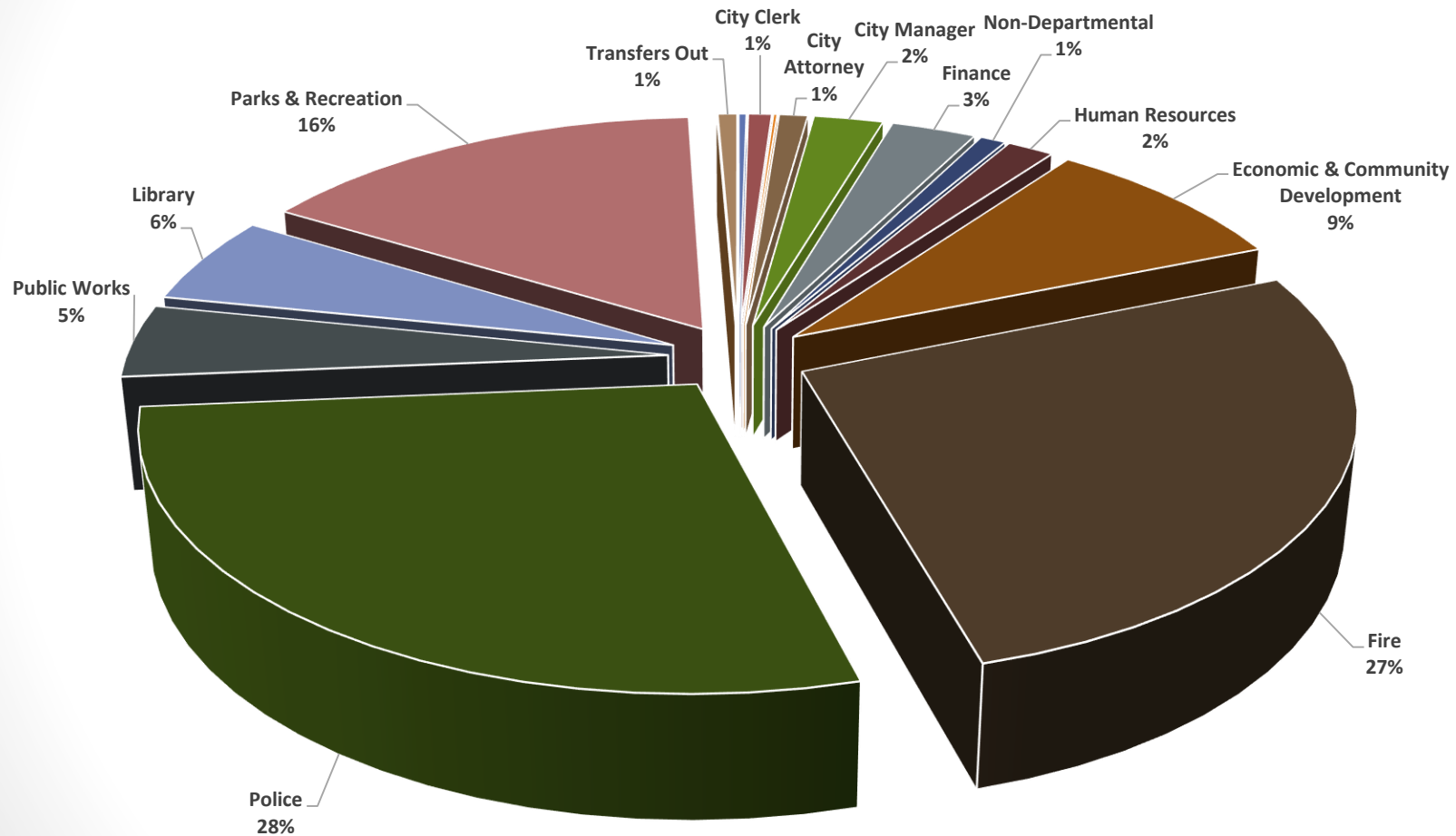
# General Fund Salary and Benefits (000s)

	FY18-19	FY19-20	Increase/ (Decrease)	% Increase/ (Decrease)
Salaries	\$49,221	\$51,159	\$1,938	3.9%
CalPERS	\$17,853	\$21,091	\$3,238	18.1%
Other Benefits	\$13,469	\$13,467	(\$ 2)	(0.01%)
<b>Total</b>	<b>\$80,543</b>	<b>\$85,717</b>	<b>\$5,174</b>	<b>6.4%</b>

*Excludes Successor Agency, Funds for which the City acts as trustee, CIP, transfers in and Internal Service Funds*



# General Fund Expenditure by Department



# City Clerk

- Assistant City Clerk, \$160,000

# City Attorney

- Legal services for Community Facilities District Formation, \$50,000

# City Manager

- Training for Executive Team, \$12,500
- Community Survey, \$12,500
- Census Support, \$50,000

# Finance

- Postage Machine replacement,\$18,200
- Special tax consultant, \$50,000
- Master Fee Study, \$85,000
- Payroll Technical Support-Personnel Data Systems, \$30,000
- Postage Machine Annual Maintenance, \$4,570
- Upgrade Financial Services Manager to Deputy Finance Director, 27,360

# Human Resources

- Labor Negotiations Consulting, 70,000
- Sexual Harassment Training - AB1343, \$7,000
- Executive Leadership Academy Overview and 360 Assessment, \$28,500
- Human Resources Assessment and Strategic Planning, \$25,000

# Economic & Community Development

- Planning Commission Minutes Transcription, 6,000
- Planning Consultant Staff Augment, \$130,000
- West of 101 Transportation Master Plan, \$150,000
  - (Revenue offset General Plan Maint. Fees \$150,000)
- Professional Services - TDM and Nexus Study, \$135,000
  - (Revenue offset \$25,000)
- Holiday Decorations Program, \$21,000

# Fire

- Fire Prevention Staff Development, \$7,500
- Data Analytics Package, \$38,000
- Lucas Device Purchase, \$96,893
  - (Revenue offset PSIF \$24,805)
- Multigas Detection Equipment, \$22,686
  - (Revenue offset, Developer Contribution \$22,686)
- Diesel Exhaust Capture System, \$124,000
- Ballistic Vests, \$11,244
- Station Alerting System Annual Maintenance, \$12,708
- Vehicle Based Wireless Vehicle Location Routers, \$25,000
  - (Revenue offset, PSIF \$6,400)



# Fire (Continued)

- Thermal Imaging Camera, \$8,300
  - (Revenue offset, Developer Contribution \$8,300)
- Rescue System 3 Training, \$25,800
- Government Contract Increase, \$23,115
- Postage, \$4,000
- Ambulance Billing Services \$50,500
- Inventory tracking software maintenance \$4,150
- EMS revenue increase, \$300,000

# Police

- Duty Ammunition, \$60,000
  - (Revenue offset, Police Seizure Funds, \$60,000)

# Public Works

- Bluebeam Revu Software, \$3,000
- Storm Water Consulting Service \$25,000
- Parking District
  - Smart Meter Maintenance and Credit Card Fees \$50,000
    - Parking Place Commission to Consider Rate Increase FY19-20
  - Fire Alarm and Elevator Maintenance at Miller Garage \$25,000

# Library

- Envisionware Management Consoles, \$7,000
- E-books (Overdrive), \$15,000
- Interns, \$11,550
- Digital Resources, \$15,000
- Delivery Cost Increase, \$10,325
- RFID Equipment Maintenance, \$16,000

# Information Technology

- Trakit Permitting System Upgrade, \$50,000
- Digital Conversion of City Documents, \$60,000
- GIS Consultant Services, \$150,000
- Trakit Support and Maintenance, \$30,000
- Police Car Computers - Maintenance, \$8,000

# Park & Recreation

- Buri Buri After School Expansion, \$231,301,
  - (Revenue Offset \$183,500)
- Ponderosa After School Expansion, \$228,301,
  - (Revenue Offset \$143,600)
- SSFUSD Summer STEAM Expansion program, \$12,117
  - (Revenue Offset \$12,117)
- Public Art Funding, \$50,000
- Music Licenses, \$4,500
- Upgrade Technology for 11 Recreation Coordinators, \$4,500
- Activity Guide Increased Costs, \$5,000
- Increase uniform budget, \$23,000
- Increased Water Rates, \$41,246
- Sunday Recreation Classes, \$19,680
  - (Revenue Offset \$23,681)
- Upgrade Parks Maintenance Worker to Arborist Technician (\$0)
- Upgrade PT Regular Rec Leader III to Rec Leader IV, \$2,000
- Upgrade PT Regular positions to 2 FTE Rec Svcs Coordinator, \$6,595

# Measure W - City (000s)

Fund	FY18-19	FY19-20	Increase/ (Decrease)
Measure W	\$12,158	\$12,370	\$212

# Other Funds Revenues (000s)

Fund	FY18-19	FY19-20	Increase/ (Decrease)
Gas Tax	\$1,458	\$1,712	\$254
SB1	\$1,110	\$1,186	\$ 76
Measure A	\$1,469	\$1,498	\$ 29
SMC – Measure W	\$0	\$ 300	\$300



# Major Proprietary Funds (000s)

Fund	FY18-19	FY19-20	Increase/ (Decrease)
Sewer*	\$29,903	\$30,561	\$658
Storm Water	\$ 1,335	\$ 1,335	\$0
Parking District**	\$ 905	\$ 905	\$0

*\*Revenues exclude CIP funding sources*

*\*\*Parking Place Commission to consider rate increases in FY19-20*

# Reserves (in millions)

Reserve Description	FY2016-17 Actual	FY2017-18 Actual	FY2018-19 Projected	FY2019-20 Projected
General	\$19.7	\$22.0	\$22.0	\$22.5
CalPERS	\$4.5	\$5.5	\$5.5	\$5.5
Infrastructure				
<i>Caltrain Station</i>	\$8.7	\$8.7	\$6.3	\$4.1
<i>Other CIP Projects</i>	\$4.8	\$2.8	\$3.7	\$0
<i>Undesignated</i>	\$0.3	\$10.0	\$11.4	\$13.4
<b>Total</b>	<b>\$38.0</b>	<b>\$49.0</b>	<b>\$48.9</b>	<b>\$45.5</b>

# Questions/Discussion