



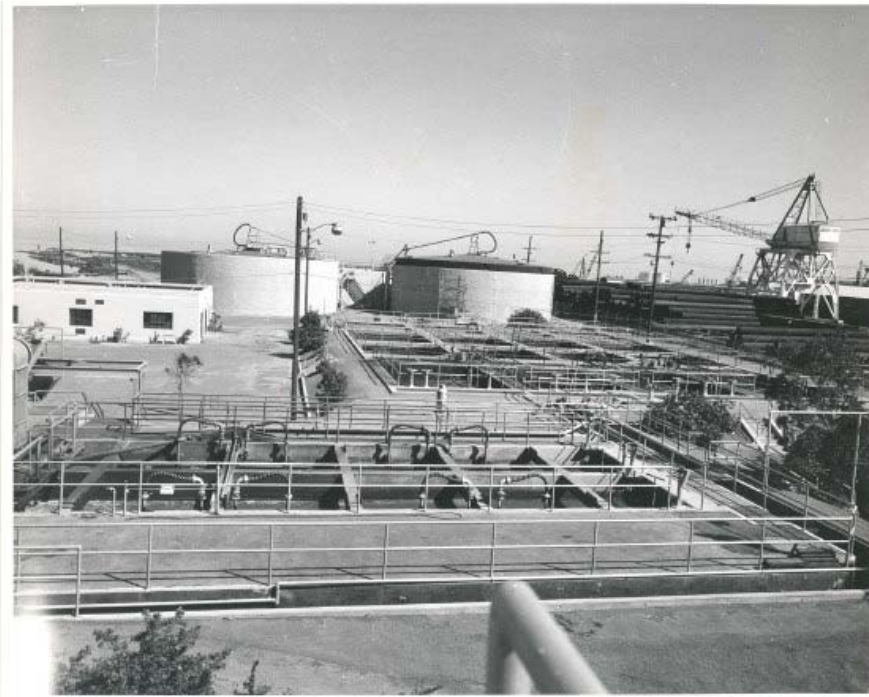
FY2017–18 to 2021–22 Proposed Sewer Rate Plan

City Council Meeting, June 28, 2017



Wastewater Treatment Plant

65 Years
of Continuous Operation

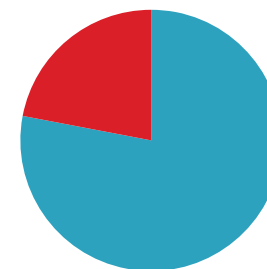


1952



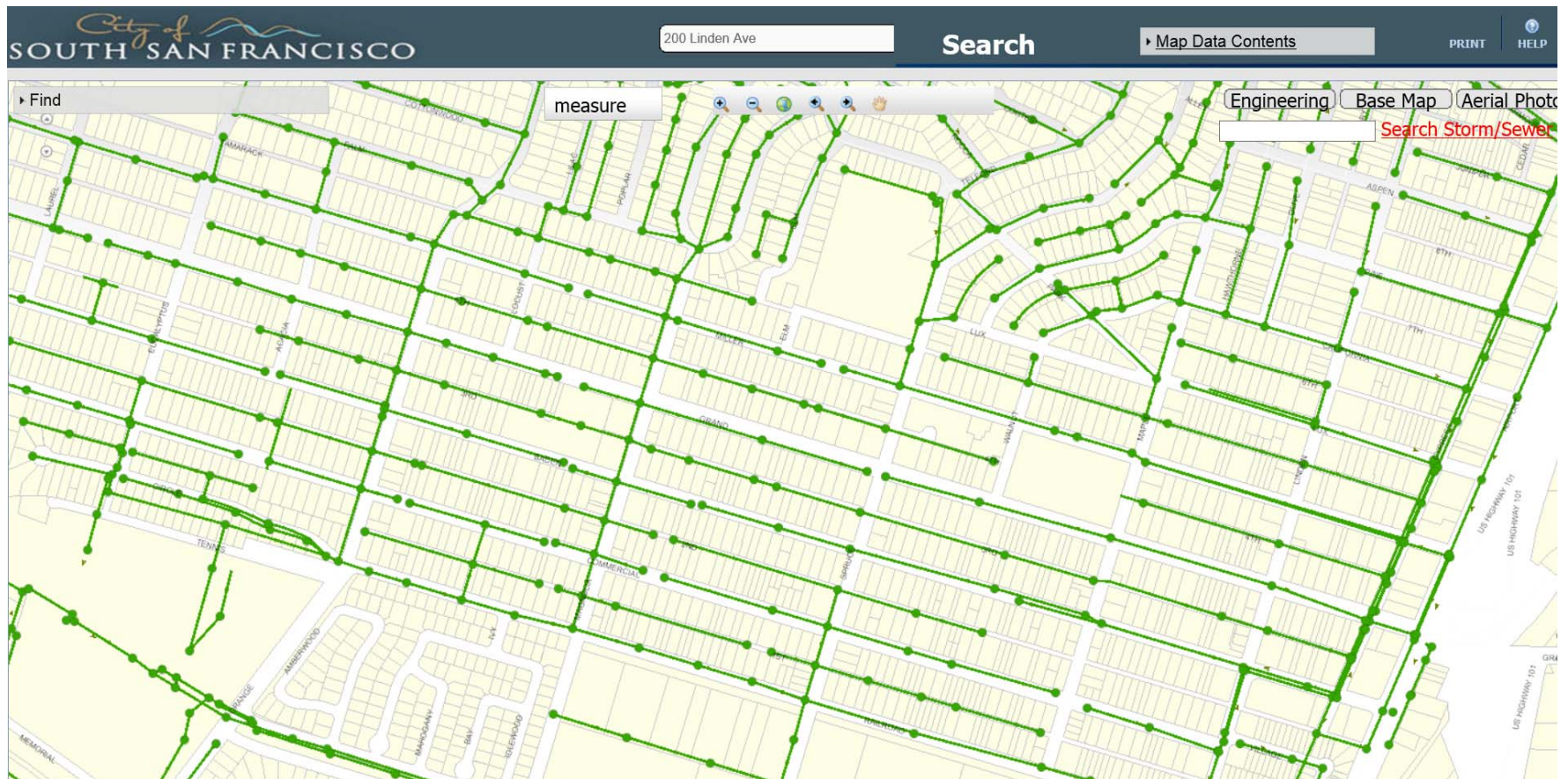
2017

South San Francisco –
San Bruno Partnership



■ SSF
■ SB

Sewage Collection System

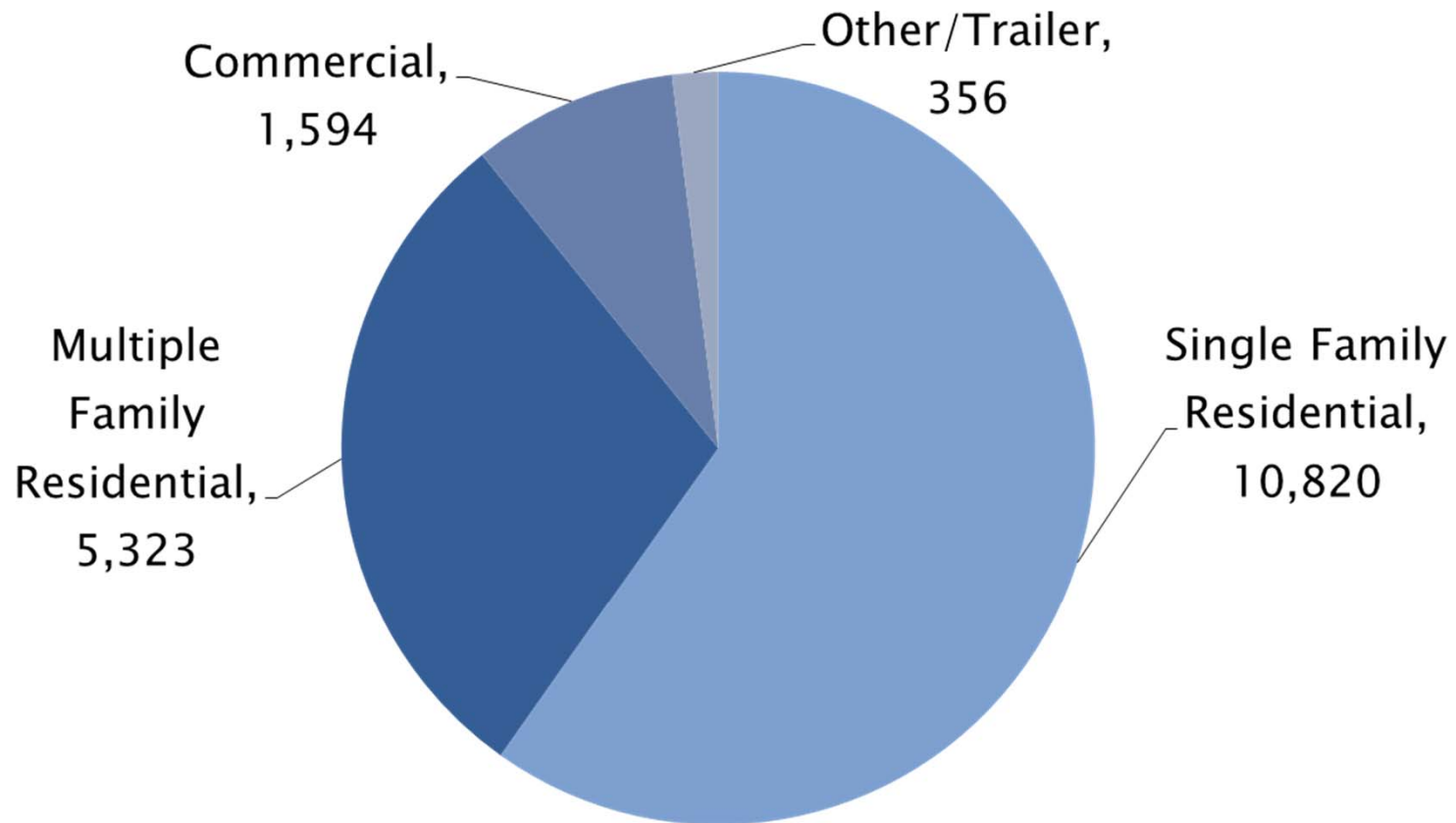


165 Miles of Sewer Line Connecting
All of South San Francisco

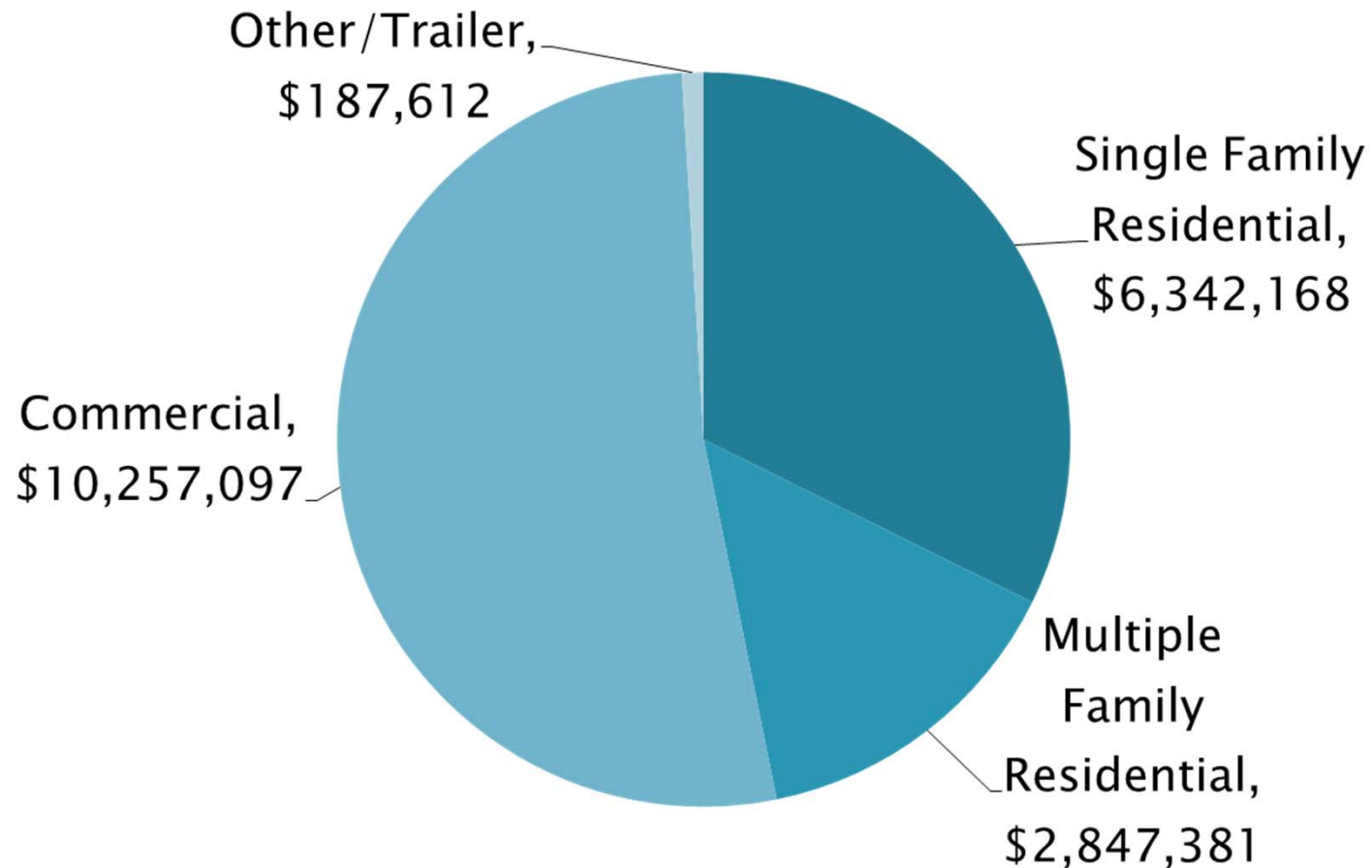
54 Full Time Wastewater Professionals Working 24 Hours/Day, 365 Days/Year



18,093 Sewer System Users

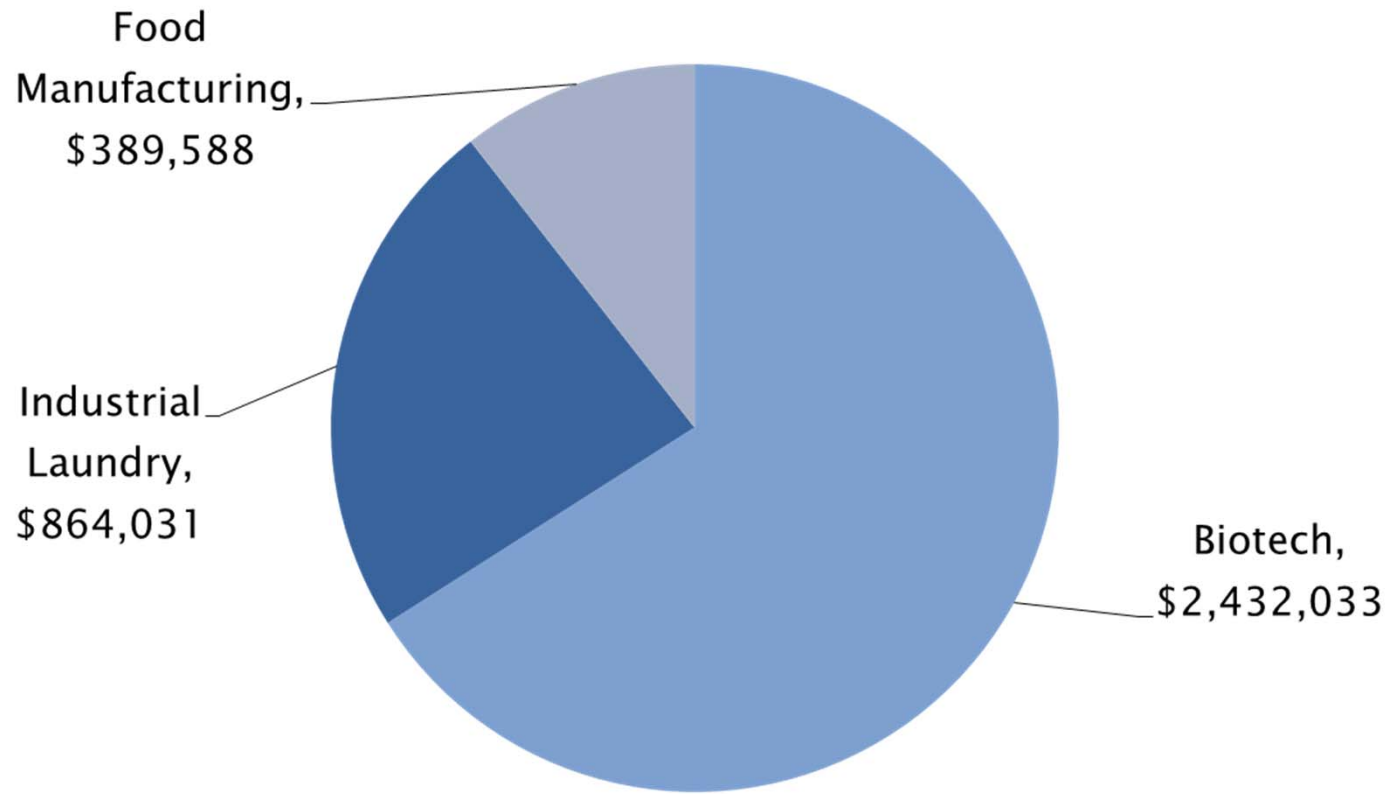


Revenue By User Type FY 2016-17



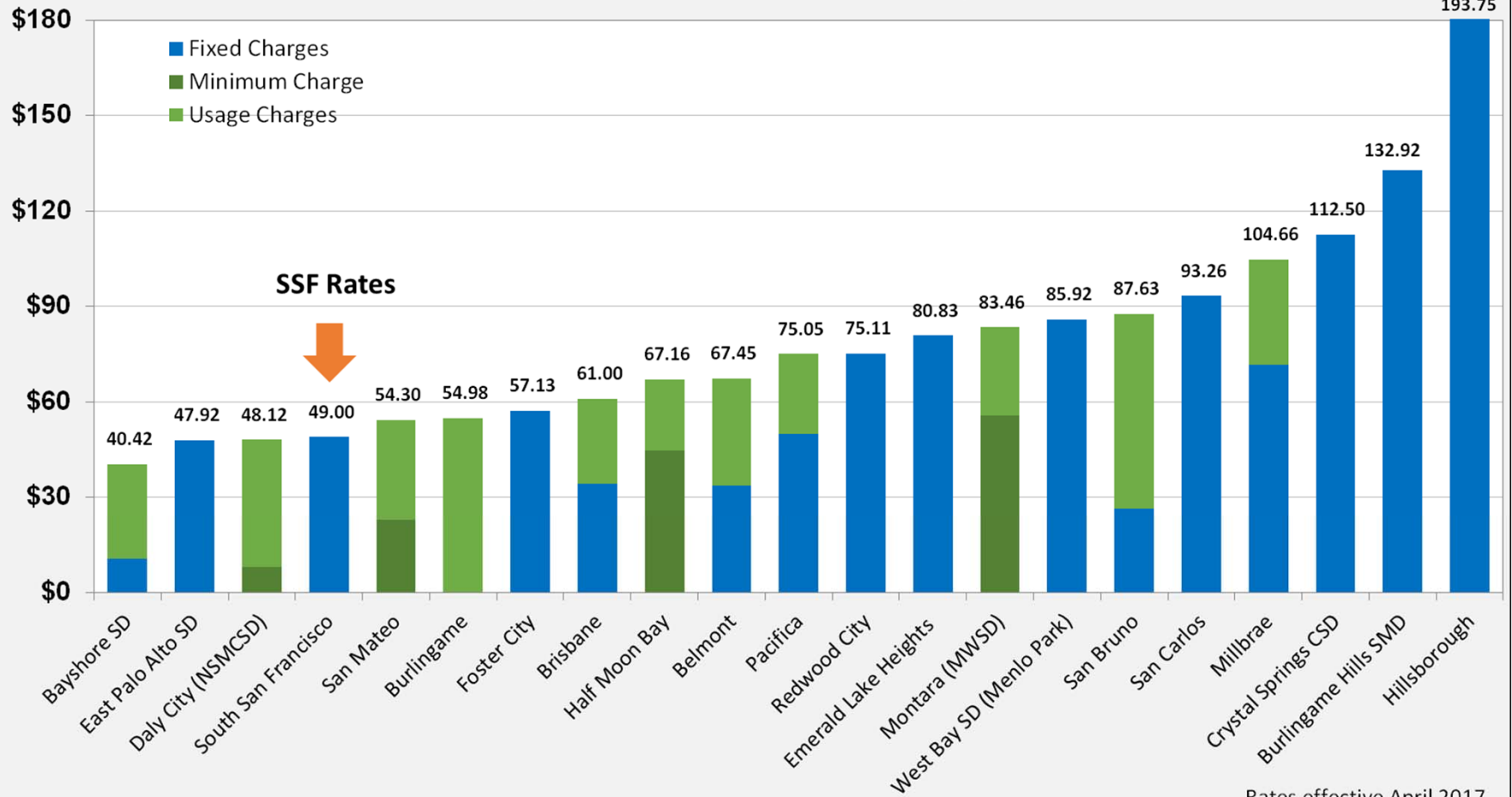
Residential Monthly Charge: \$49
Commercial Monthly Avg. Charge: \$536

Largest Industrial Users By Type



Typical Single Family Residential Monthly Sewer Bills FY 2016-2017

San Mateo County: Based on flat rate or 6 hcf of monthly winter water use



Rates effective April 2017

**Near Lowest Monthly Rate
in San Mateo County**

Proposition 218 Noticing

Date	Action
March 22, 2017	City Council conceptual approval of five year sewer rate plan
April 28, 2017	Mail public notice of five year sewer rate plan to all parcel owners
May 16, 2017	Public information meeting about sewer rates and CIP
June 28, 2017	Public Hearing, tabulation of protest notices, if less than half of parcel owners protest, City Council may vote on proposed plan
July 1, 2017	Council approved rates take effect

Proposed Sewer Rates

FY 2017-18	FY 2018-19	FY 2019-20	FY 2020-21	FY 2021-22
15% 13%	10%	5% 2%	5% 2%	5% 2%
↓	↓	↓	↓	↓
\$7.33/month \$6.33/mo	\$5.67/month \$5.50/mo	\$3.08/month \$1.25/mo	\$3.25/month \$1.25/mo	\$3.42/month \$1.25/mo



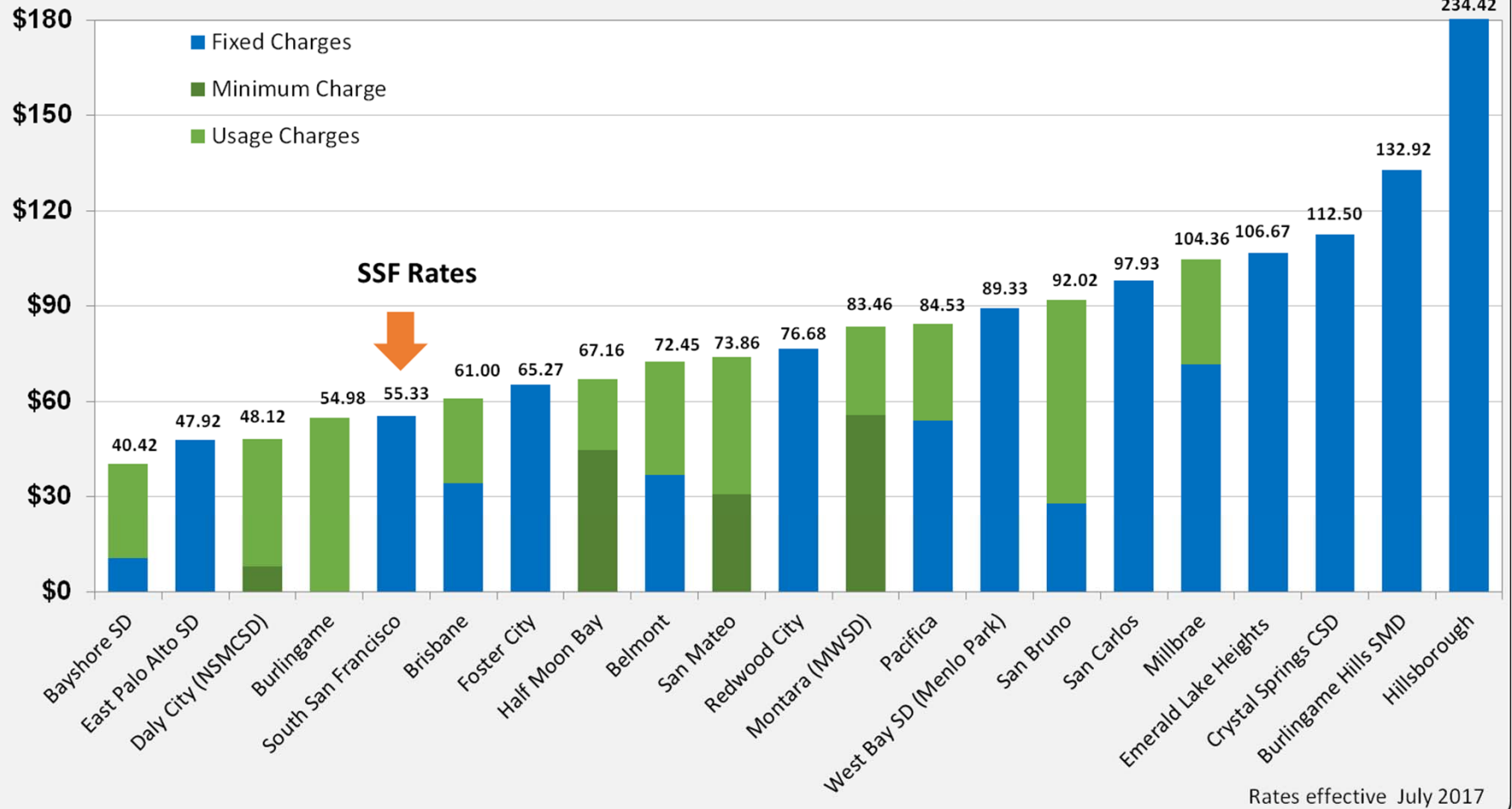
Five-Year Sewer Rate Plan

	<u>Actual FY 2016-17</u>	<u>FY 2017-18</u>	<u>FY 2018-19</u>	<u>FY 2019-20</u>	<u>FY 2020-21</u>	<u>FY 2021-22</u>
Single Unit Residential	\$588.00 per EDU	\$664.00 per EDU (13% Increase)	\$730.00 per EDU (10% Increase)	\$745.00 per EDU (2% Increase)	\$760.00 per EDU (2% Increase)	\$775.00 per EDU (2% Increase)
Multi-Unit/Trailer Residential	\$527.00 per EDU	\$596.00 per EDU (13% Increase)	\$655.00 per EDU (10% Increase)	\$668.00 per EDU (2% Increase)	\$682.00 per EDU (2% Increase)	\$695.00 per EDU (2% Increase)
Commercial*	Varies by Industry	(13% Increase)	(10% Increase)	(2% Increase)	(2% Increase)	(2% Increase)

*Minimum commercial rate will be tied to Single Unit Residential

Typical Single Family Residential Monthly Sewer Bills FY 2017-2018

San Mateo County: Based on flat rate or 6 hcf of monthly winter water use



**STILL Near Lowest Monthly Rate
in San Mateo County**

Help for Income Restricted Users

- ▶ New Program to Rebate Portion of Sewer Fees for Income Restricted Users
- ▶ \$60 per year Rebate
- ▶ Residents Enrolled in PG&E or Cal-Water Assistance Program
- ▶ Included in Proposed FY 2017–18 Budget



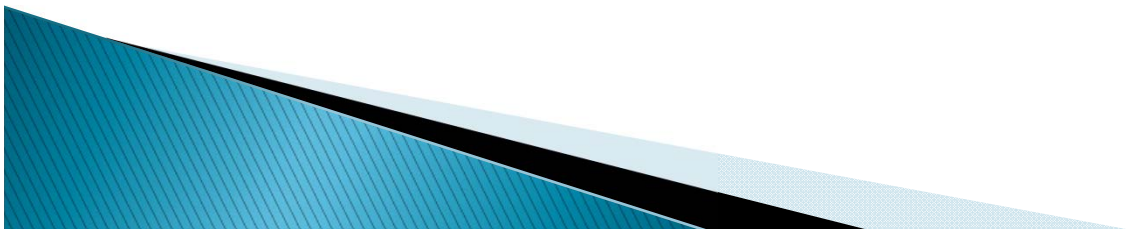
New Development Pays

- ▶ Mandated Upgrades Not Caused by Growth
- ▶ New Developments Pay One-Time Impact Fees
- ▶ New Development to Pay \$11M in Sewer Impact Fees in Next 48 Months



Why Rate Increase Required

- ▶ Comply with mandatory regulatory requirements
- ▶ Improve treatment plant reliability
- ▶ Protect fragile San Francisco Bay ecosystem



Treatment Plant Capital Improvement Projects

- ▶ Anaerobic Digester Replacement Project
- ▶ Reliability and Wet Weather Treatment Capacity Projects





Digesters
No. 1-3 and
Control
Buildings

N

100 ft



Storm Water Pump
Station No. 4

Convert Aeration Basins
No. 1-4

Storm Water Pump
Station No. 5

Process
Improvements

Switchgear
Replacement

Raise Walls of Main
Conveyance Channel

Rehabilitate

New
Secondary
Clarifier No. 4

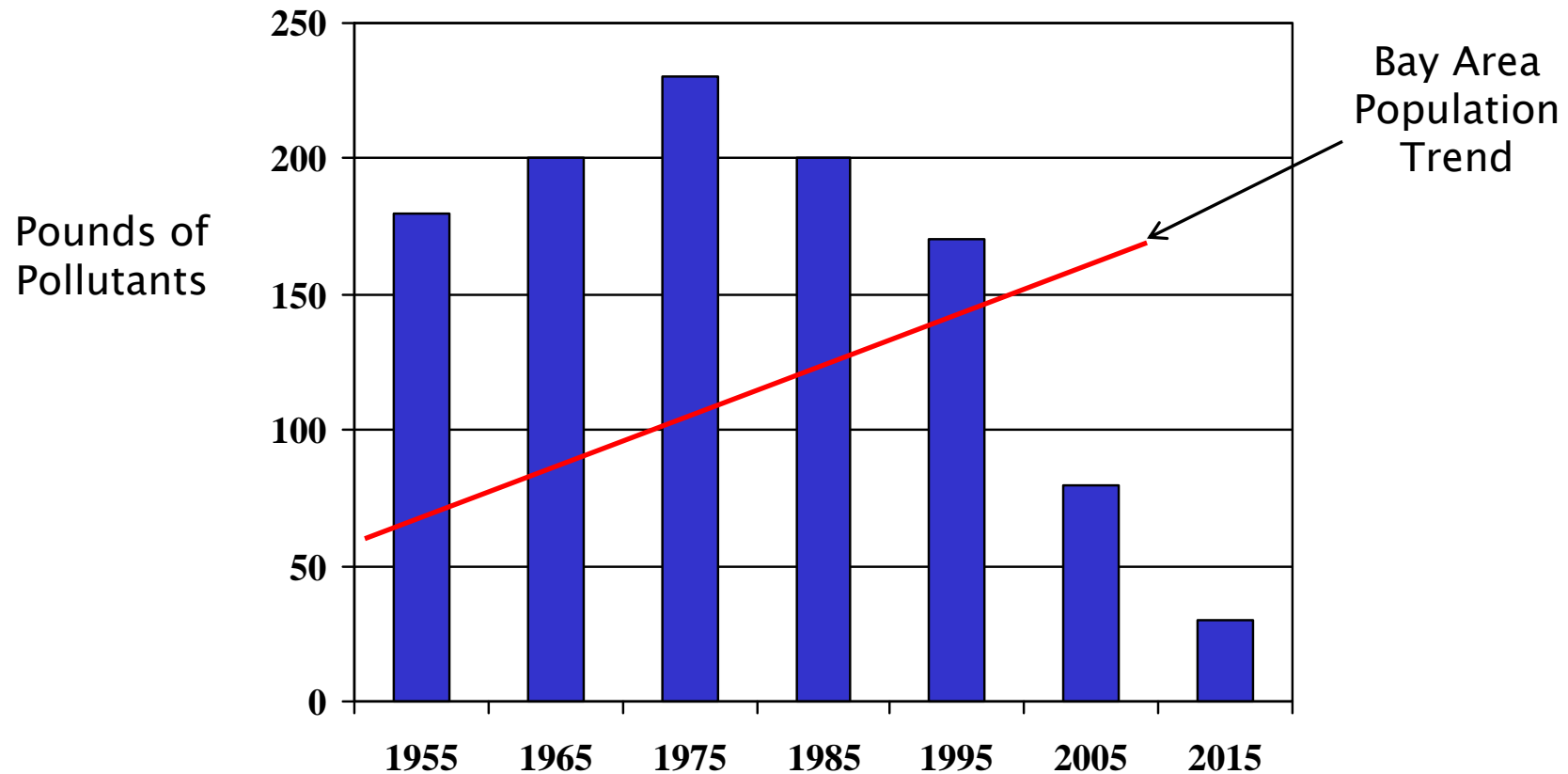
Process
Improvements

Regulatory Requirements

- ▶ Keep the City in continued compliance with the Regional Water Quality Control Board's orders



San Francisco Bay 1950–2017



Loadings of Pollutants to the Bay
from Sewage treatment Plants
vs Population





Questions and Discussion