



**WELCOME TO
THE SOUTH SAN FRANCISCO
POLICE DEPARTMENT**

THE SOUTH SAN SOUTH FRANCISCO POLICE DEPARTMENT

Established in 1908

83 sworn police officers

37 professional staff

(includes PT employees)

Operations Division

Services Division

Investigations Division





OPERATIONS DIVISION

In **2020**:

Our Patrol Division responded to **61,550** calls for service.

Wrote a total of **6,939** reports

Made **1,588** arrests

Patrol Teams and Sectors





K-9 UNIT



Diesel



Blitz



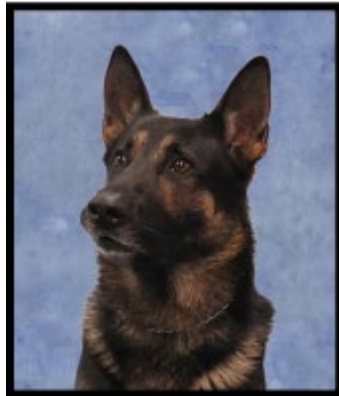
Ace



Morty



Tex



Brix



Indy



Lena

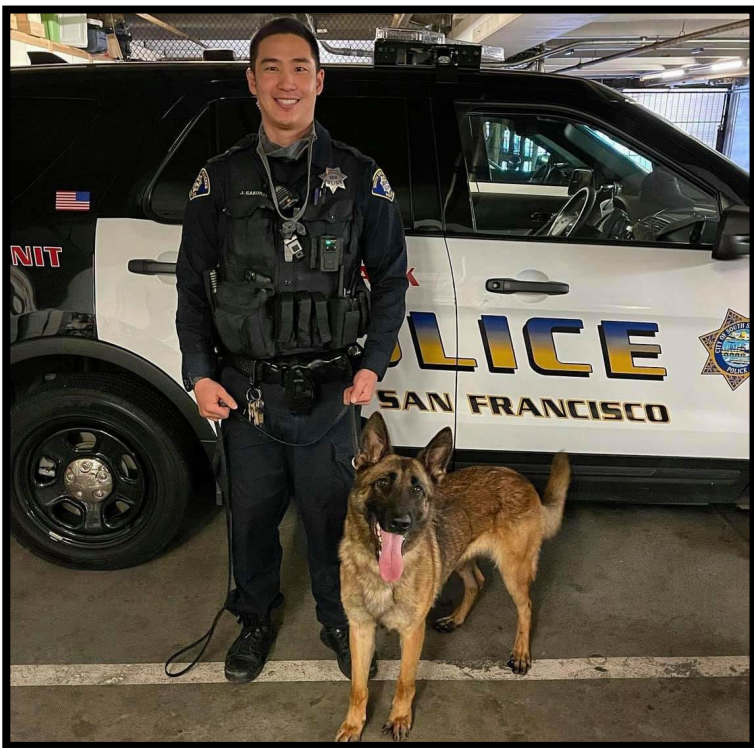


Rex – Comfort
Companion



K-9 UNIT





In 2020, our K-9 Unit completed:

- 75** - Person searches
- 47** - Narcotic searches
- 32** - Firearm Searches
- 15** - Others
- 41** - Mutual aids
- 24** - Surrenders
- 2** - Apprehensions
- 3** - Demonstrations



Due to the Covid-19 pandemic, public demonstrations were canceled with very few exceptions, but normally, the unit will handle upwards of 15 or more public demonstrations a year.



The "Other" stat included tracking and trailing for missing persons or suspects, along with other miscellaneous K-9 activities that are not otherwise tracked.

K-9 UNIT





TRAFFIC UNIT



NEIGHBORHOOD RESPONSE TEAM (NRT)

NRT is consistently called upon to initiate activity and address specific issues in the city.

They address such issues as:

- - Quality of life issues
- - Communicate and interact with our youth and citizens
- - Assist in Patrol and C.I.B. matters
- - Network and assist other agencies
- - Initiate enforcement
- - Target specific criminal activity in neighborhoods through proactive law enforcement





CRIMINAL INVESTIGATION BUREAU



S.W.A.T.

The South San Francisco Police Department is part of the North Central Regional S.W.A.T. Team, which consists of 7 cities in San Mateo County.

S.W.A.T. Officers typically respond to especially dangerous situations, which consist of:

- Armed Subjects
- Barricaded Subjects
- Hostage Situations
- Transportation Hi-Jacking
- Terrorist Attacks
- Dignitary Protection / Site Security
- High-Risk Warrant Service





TRAINING MANAGER



BUSINESS & PLANNING LIAISON

RECORDS





DISPATCH

We provide dispatch services to both the nearby Town of Colma and City of Pacifica.





EVIDENCE



OUR SERVICES



SERVICES
C.O.P.P.S SERGEANT/CORPORAL
SCHOOL LIAISON OFFICERS
COMMUNITY OUTREACH TEAM - BICYCLE PATROL OFFICERS





**C.O.P.P.S. - COMMUNITY ORIENTED POLICING AND
PROBLEM SOLVING**

SERGEANT & CORPORAL

- Permits for security at events
- Public Information Officer (PIO)
- Handles problem businesses
- Handles neighbor disputes
- Facilitates neighborhood watch meetings
- Town Hall meetings
- Citizen's Academy
- Hispanic Citizen's Academy
- Fairs – Job/Health
- Every 15 Minutes High School program*



SCHOOL LIAISON OFFICERS





EXPLORER POST 850



COMMUNITY OUTREACH TEAM

COMMUNITY OUTREACH TEAM



NETWORK SYSTEMS (over 24):

- California Highway Patrol
- LifeMoves
- Safe Harbor Shelter
- Star Vista / First Chance
- Sitike Counseling Center
- Y.M.C.A.
- Psychiatric Emergency Response Team
- San Mateo Assessment & Referral Team
- North County Mental Health Clinic
- Telecare Corporation
- St. Vincent de Paul
- National Alliance on Mental Health
- SMCO Street Medicine
- SMCO Assisted Outpatient Treatment
- FAST Team Lodge Family Assertive Support team
- My House South
- Serenity House
- Edgewood Center for Children & Families

COMMUNITY OUTREACH TEAM



This unit interacts with all who work, live or visit the downtown area.

This mission is accomplished by:

- speaking with citizens
- continuously meeting with merchants and business owners
- distributing information
- working with other agencies and resource centers
- warning and taking proper enforcement

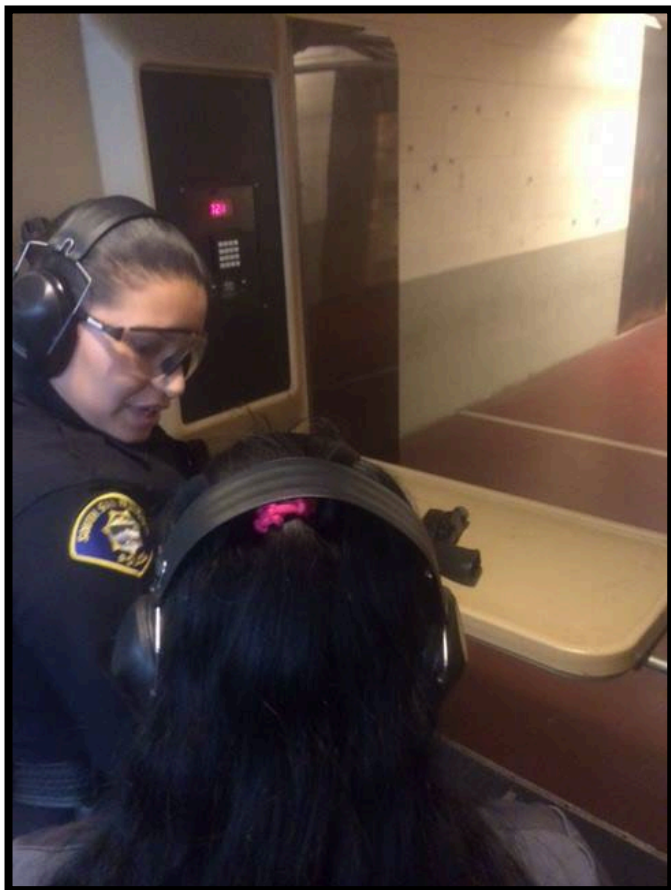
We continuously monitor and address the homeless population and encampments in the area.

In 2021, COT was responsible for housing [temporary/ permanent] approximately **45** individuals in need of shelter. COT continues to find ways to provide housing and resources to our homeless population.



PUBLIC OUTREACH

- Various Programs Annually Completed (approx. 30+)
- SSFPD Community Academies (Hispanic, Youth, Citizen)
- SSFPD Explorer-Cadet Program (Post #850)
- National Night Out
- Pops with a Cop (new)
- Neighborhood Watch / Community Meetings
- Police Activities League [PAL]



SSFPD HISPANIC COMMUNITY ACADEMY





SSFPD YOUTH ACADEMY





PUBLIC OUTREACH



SOCIAL MEDIA



Four social media posts are displayed in a grid:

- Top-left: A police car with "POLICE" and "SOUTH SAN FRANCISCO" on the side. Handwritten text: "@SOUTHCITYPD".
- Top-right: A police officer in uniform. Handwritten text: "@ssfpdexplorer.cade.k".
- Bottom-left: A police officer in uniform. Handwritten text: "@SSFPOLICE".
- Bottom-right: A police officer in uniform. Handwritten text: "@SSFPD_K9".

**FOLLOW US ON
SOCIAL MEDIA!**

  South San Francisco Police Department

TRANSPARENCY PORTAL

Racial Identity Profiling Act (RIPA)

Community Wellness and Mental Health
Statistics

21st Century Leadership (Best Practices
for Modern Day Policing and Public Trust)

Policies and Procedures



COMMUNITY WELLNESS AND CRISIS RESPONSE TEAM

A Strategic Goal of the SSF Commission on Racial and Social Equity

Collaboration between San Mateo County Behavioral Health and Recovery Services, the non-profit StarVista, South San Francisco, Daly City, Redwood City and San Mateo

2 Year Pilot Program (started in December 2021)

We welcomed our Clinician “Mika” who has been embedded with the Police Department

Partnered with Gardner Center @ Stanford for Data Analysis and Program Impacts



Thank You!