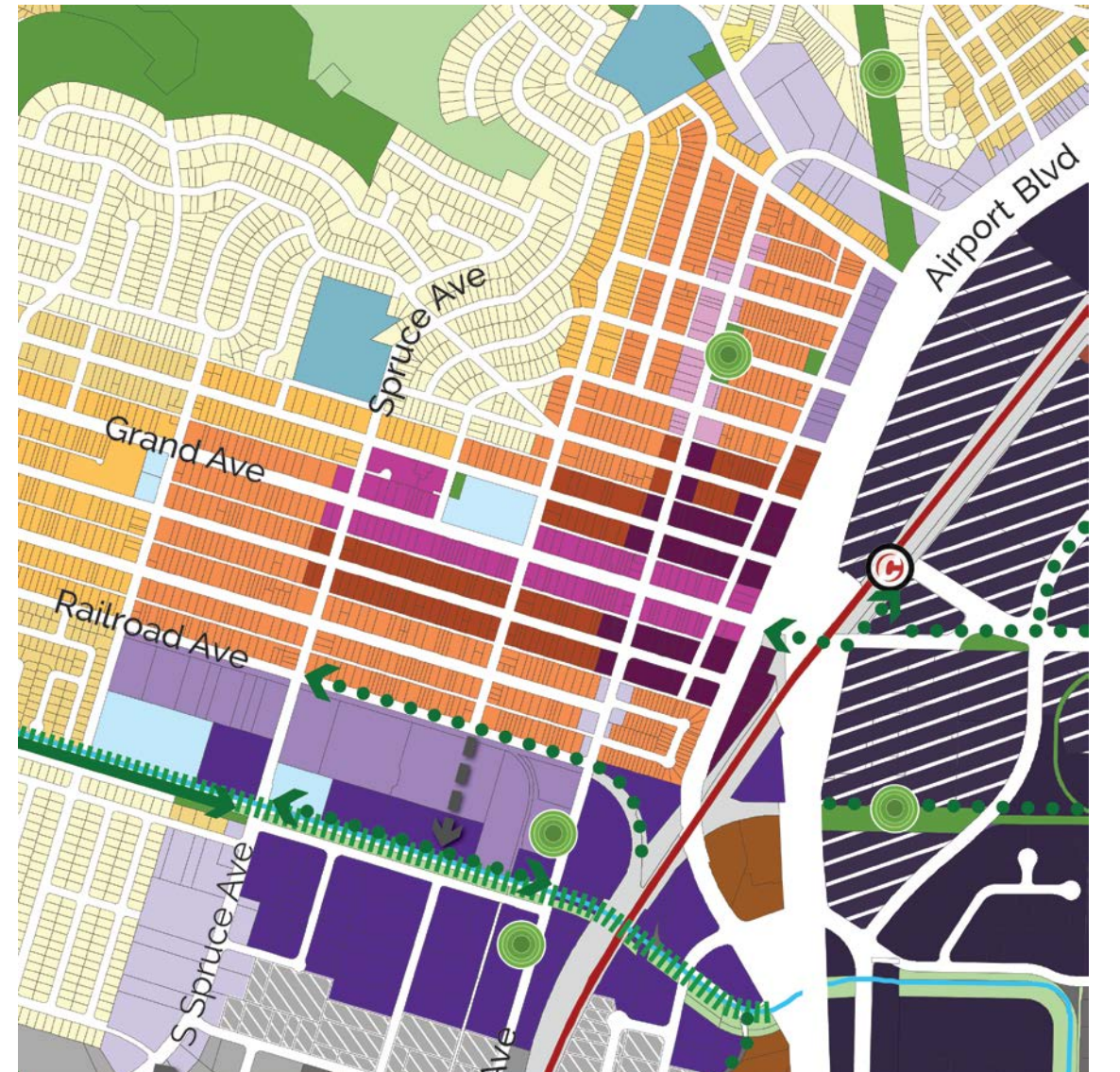
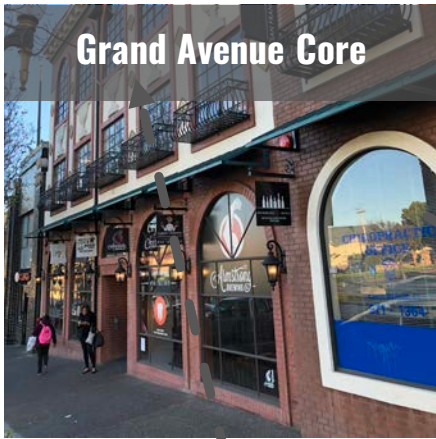


Preferred Alternative

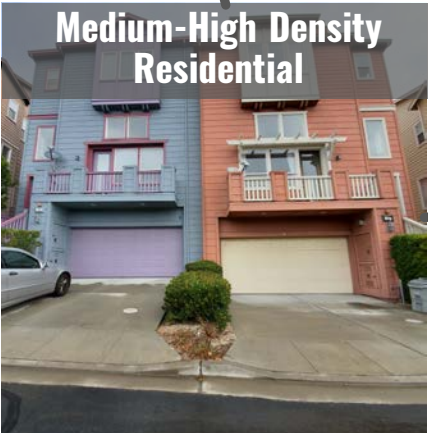
- Maintains the overall community vision for Downtown as the heart of South San Francisco
- Retains the core community land use vision articulated in the Downtown Station Area Specific Plan
- Creates a new residential neighborhood centered along Colma Creek
- Creates mixed-use gateway along Airport Blvd with a neighborhood-serving center @ Linden Ave



Grand Avenue Core



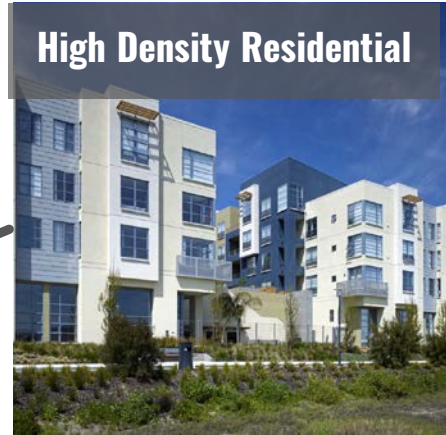
Medium-High Density Residential



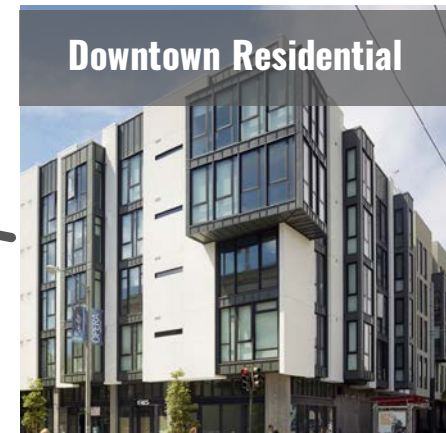
High Density Mixed Use



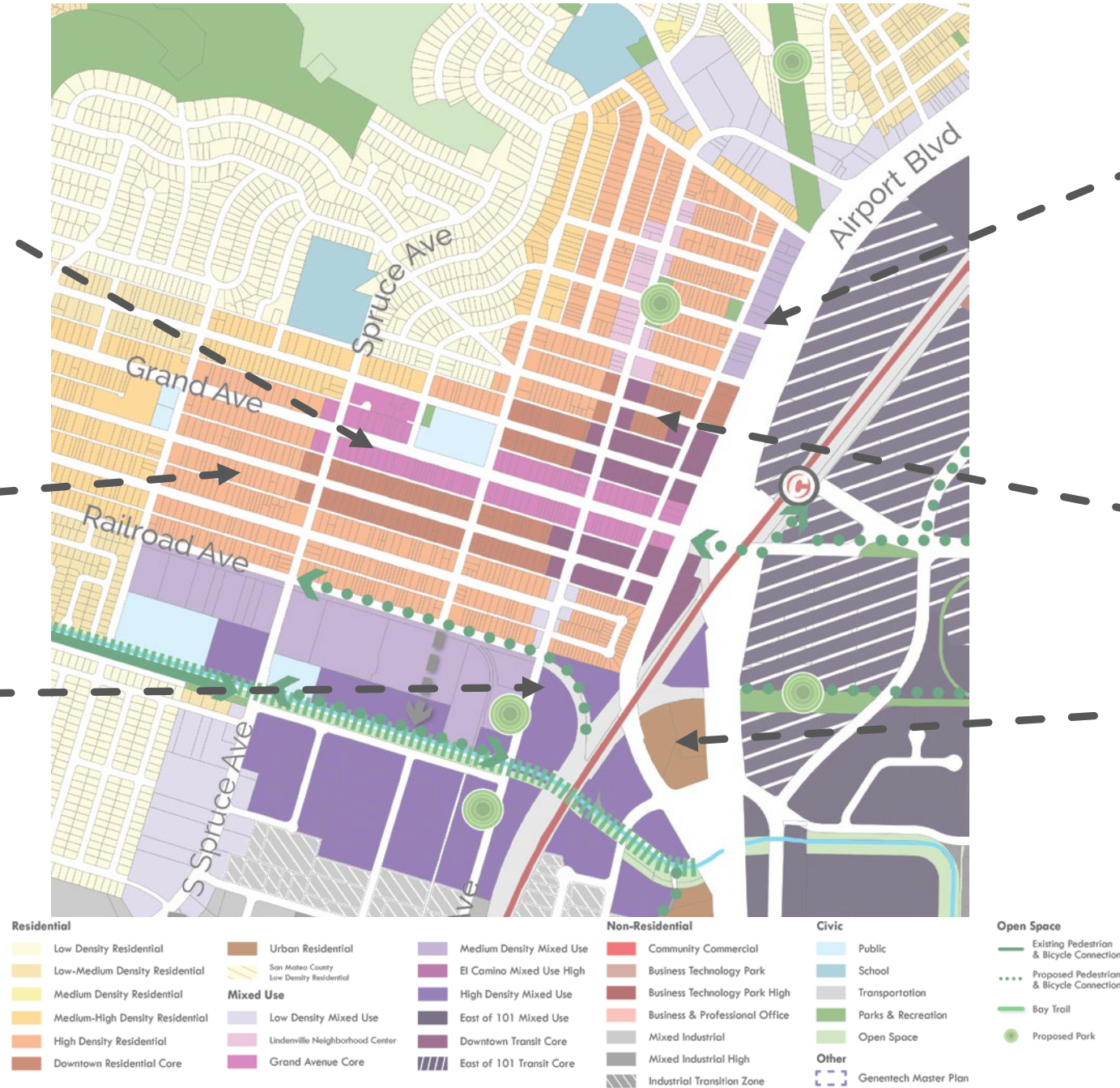
High Density Residential



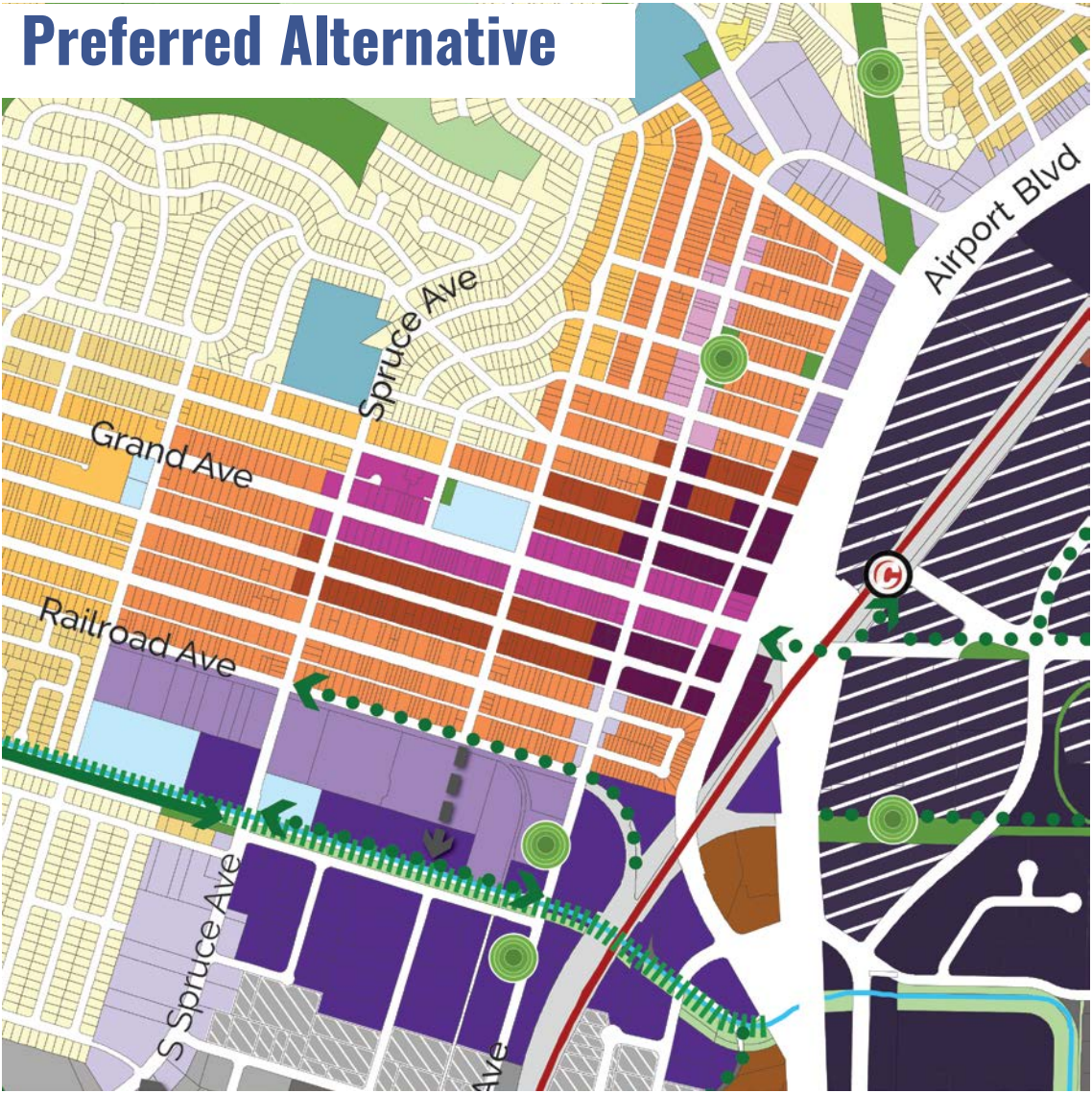
Downtown Residential



Urban Residential



Preferred Alternative



Changes Only

