

233 E. GRAND

Government Code Section 54957.5
SB 343
Agenda: 06/24/2020
Item #8

BUILDING
233 E. Grand Ave.
South San Francisco, CA 94080

PARKING STRUCTURE
328 Roebling Rd.
South San Francisco, CA 94080

Flad Project Number
19419-00

Description of Package
PRECISE PLAN

Date
04/21/2020



Flad













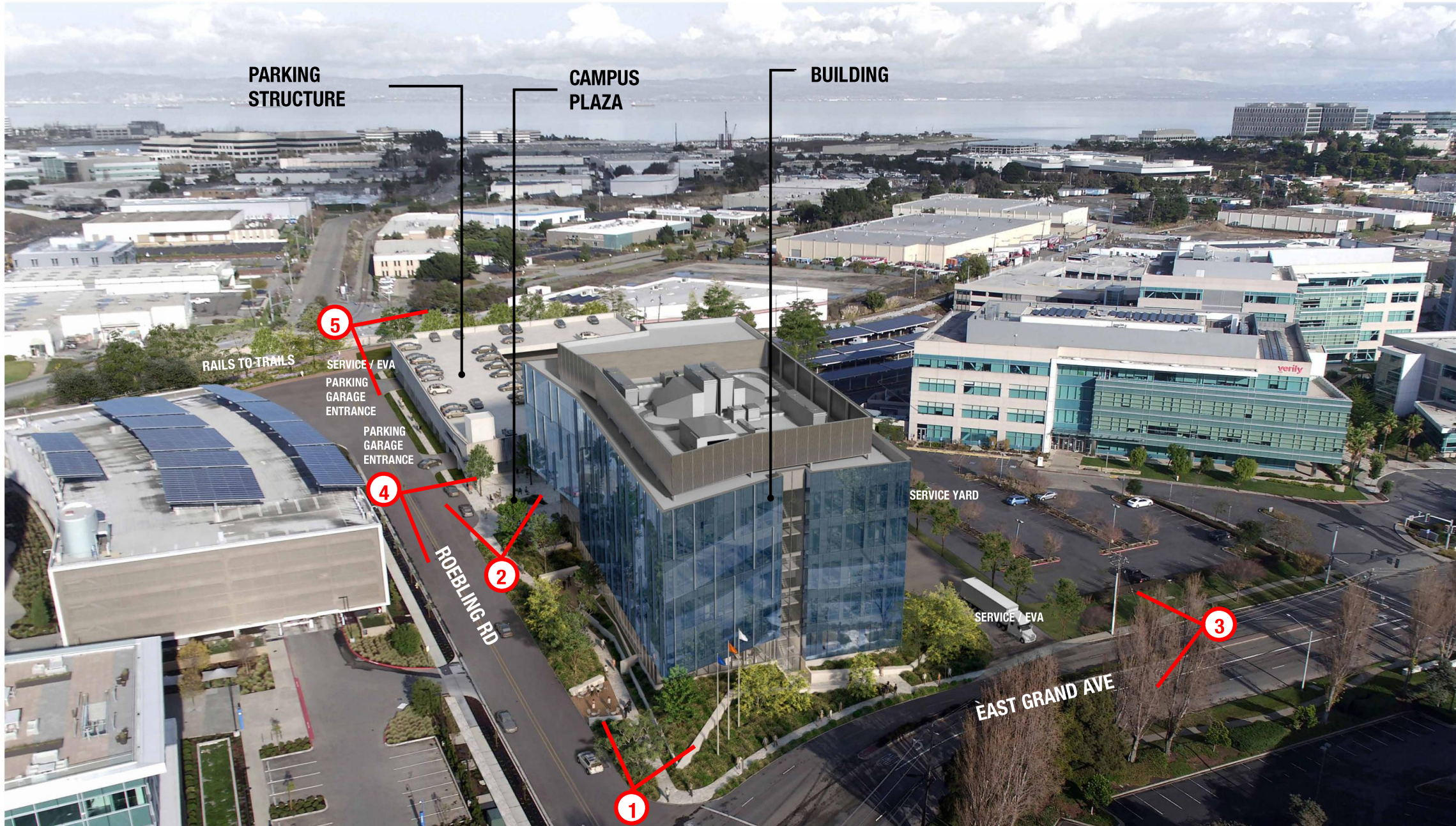






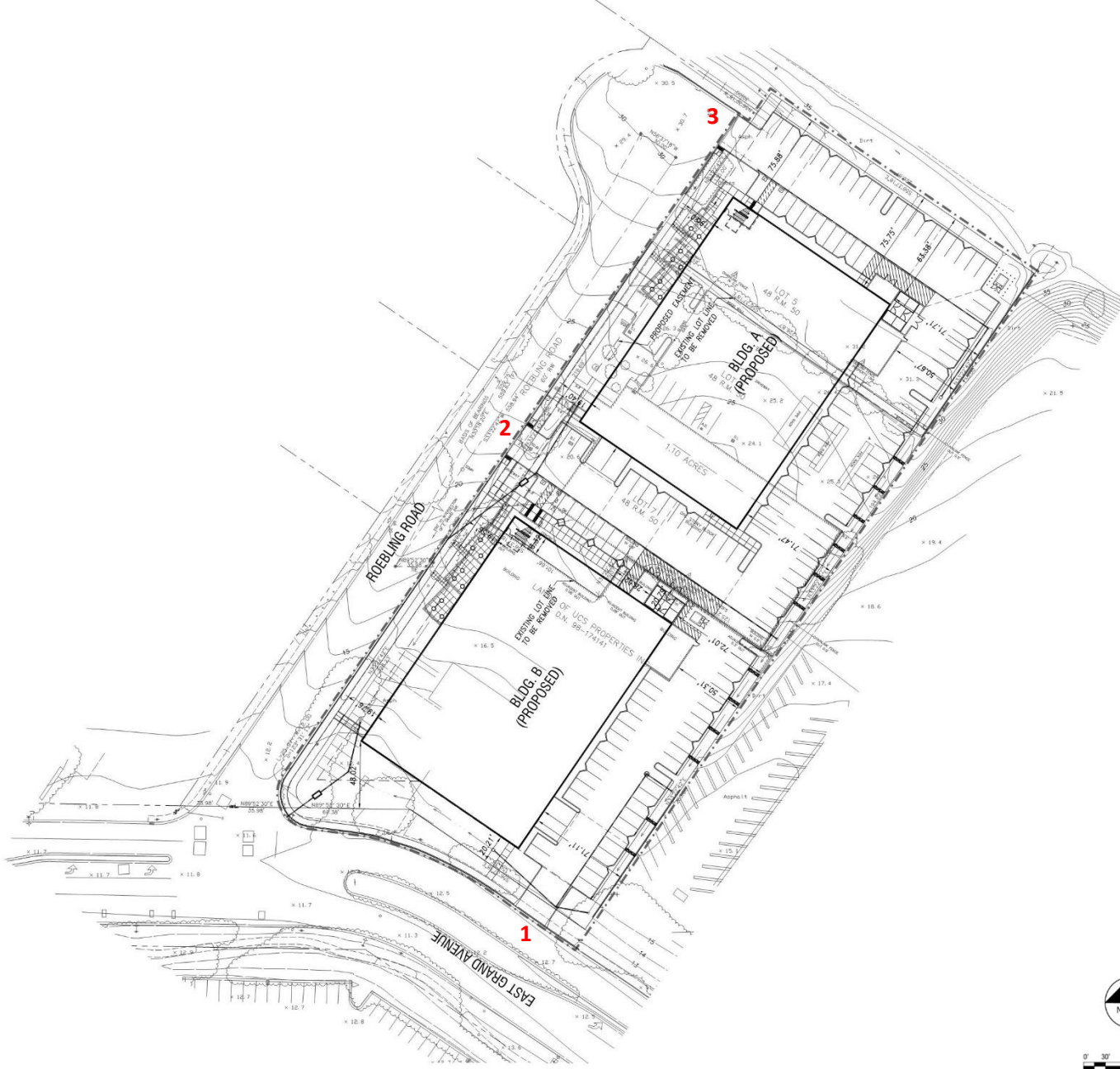
Thank You

Appendix









PROJECT DATA

LOT AREA: 2.97 ACRES

BUILDING:

F.A.R.:	.81
BUILDING AREA:	105,538 SF
BUILDING A:	52,768 SF
BUILDING B:	52,768 SF
TOTAL AREA:	105,538 SF

PARKING:

PARKING REQUIRED AT 2.8/1,000 SF	296 STALLS
SURFACE PARKING	123 STALLS
BASEMENT GARAGE BUILDING A	73 STALLS
BASEMENT GARAGE BUILDING B	73 STALLS
TOTAL PARKING PROVIDED	296 STALLS
ACCESSIBLE PARKING PROVIDED AT 2% OF TOTAL	8 STALLS



PROJECT DATA

LOT AREA: 2.97 ACRES

BUILDING

F.A.R. 1.0
BUILDING AREA 129,919 SF

PARKING

PARKING REQUIRED AT 2.8/1,000 SF 364 STALLS

GARAGE

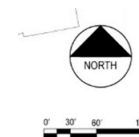
LEVEL AT GRADE	50 STALLS
LEVEL 2	127 STALLS
LEVEL 3	130 STALLS
ROOF	57 STALLS
TOTAL	364 STALLS

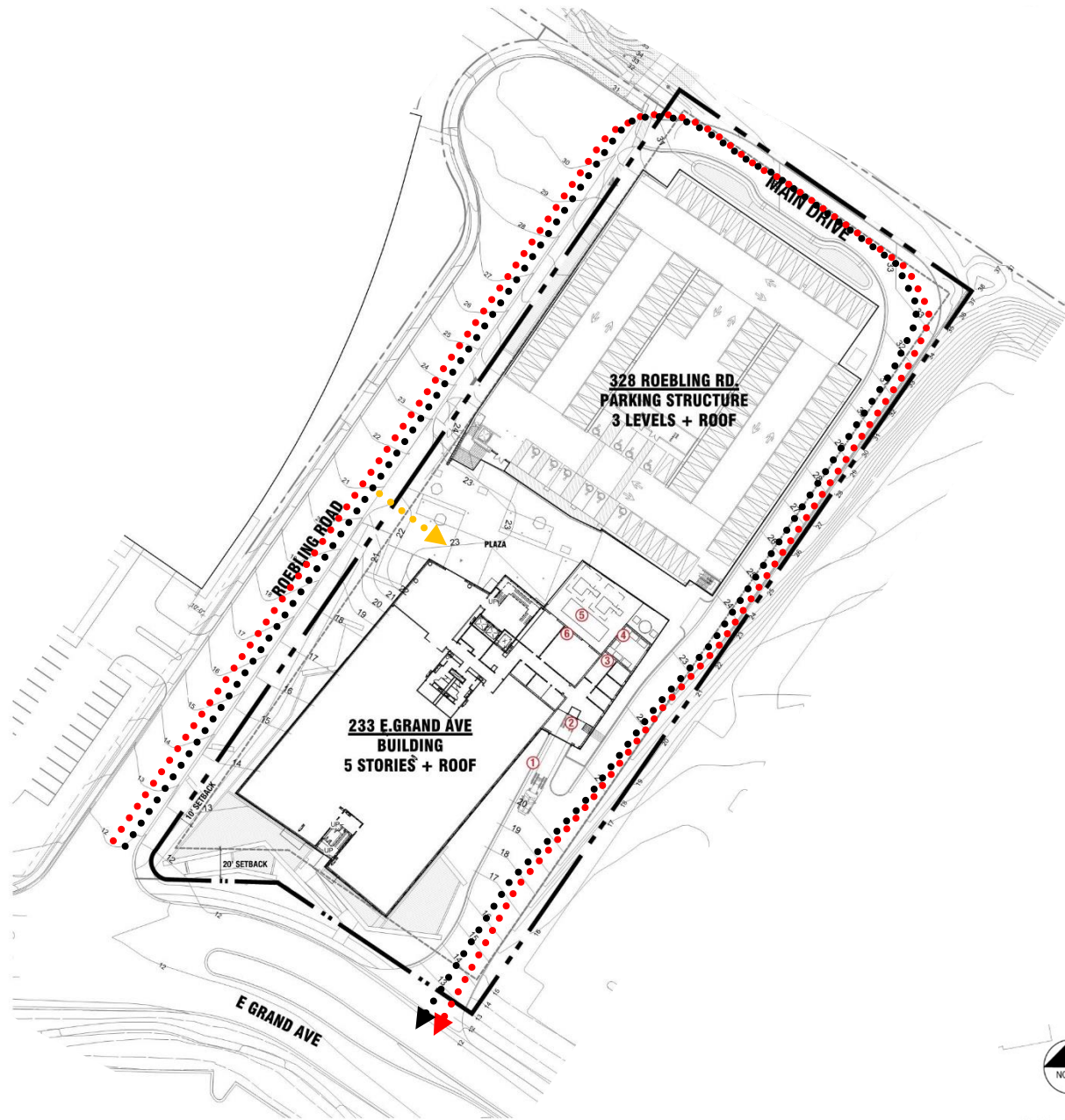
ACCESSIBLE PARKING REQUIRED AT 2% OF TOTAL 8 STALLS

ACCESSIBLE PARKING SPACES 6 STALLS

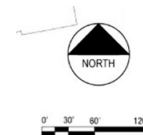
ACCESSIBLE VAN PARKING 2 STALLS

TOTAL ACCESSIBLE PARKING 8 STALLS





- ←.....→ EMERGENCY VEHICLE ACCESS
- ←.....→ SERVICE ACCESS
- ←.....→ FOOD TRUCK / EVENT ACCESS



PROJECT DATA

LOT AREA: 2.97 ACRES

BUILDING

F.A.R. 1.0
BUILDING AREA 129,919 SF

PARKING

PARKING REQUIRED AT 2.8/1,000 SF 364 STALLS

GARAGE

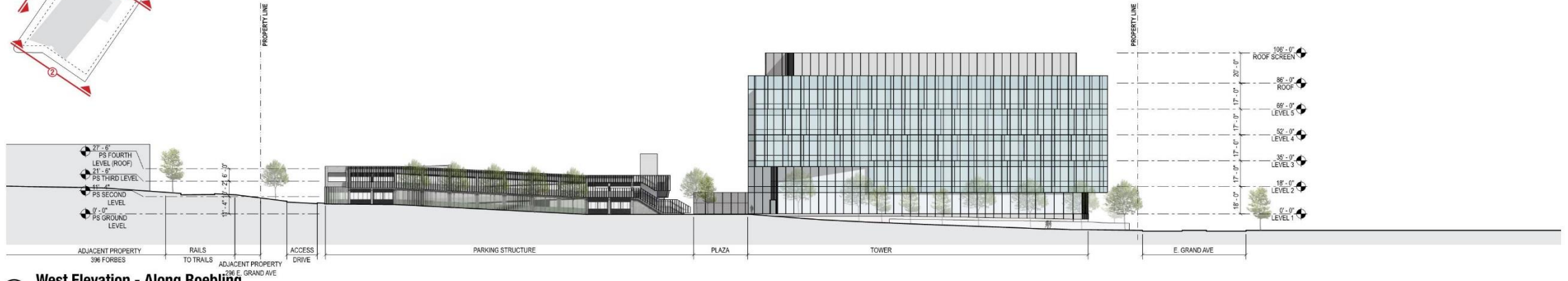
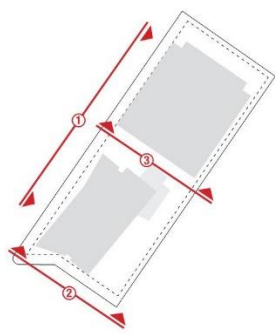
LEVEL AT GRADE	50 STALLS
LEVEL 2	127 STALLS
LEVEL 3	130 STALLS
ROOF	57 STALLS
TOTAL	364 STALLS

ACCESSIBLE PARKING REQUIRED AT 2% OF TOTAL 8 STALLS

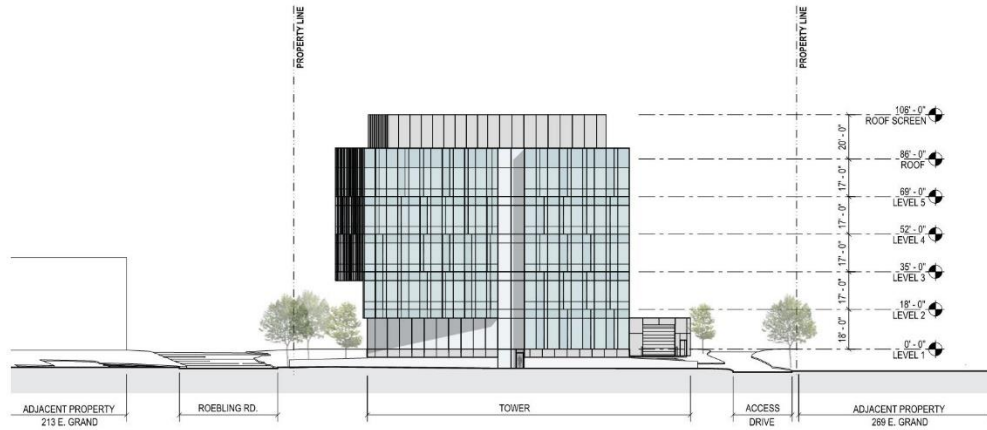
ACCESSIBLE PARKING SPACES 6 STALLS

ACCESSIBLE VAN PARKING 2 STALLS

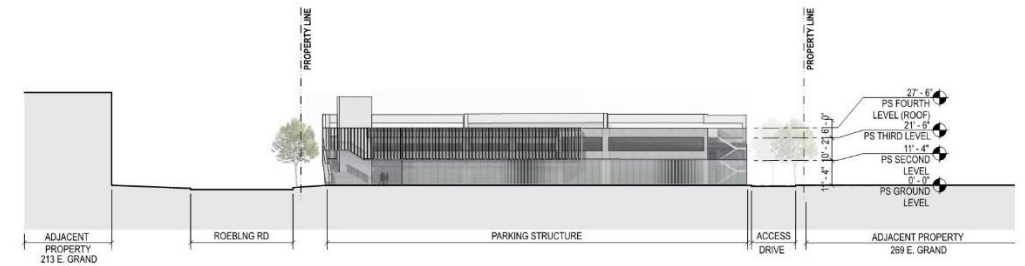
TOTAL ACCESSIBLE PARKING 8 STALLS



1 West Elevation - Along Roebling



2 South Elevation - Along E. Grand



3 South Elevation - Along Plaza

