

Linden and Pine Park South San Francisco



Project Details

LEAD ARTIST

J Muzacz / GIVE ONE Studio LLC dba The Mosaic Workshop
729 Airport Blvd. Austin, TX 78702
(512) 497-1492 | JMuzacz@gmail.com



CLIENT/CONTACT

Ann Berchtold
MIG
Director of Marketing and Communications,
Director of Public Art and Placemaking
aberchtold@migcom.com

DATE

September 22, 2025

PROJECT DESCRIPTION

Concrete plaza mosaic inlays, four (4) column mosaic murals, and a mosaicked playground sculpture, that add unity, texture, cultural context, vibrant colors and playful interactivity to Linden & Pine Park.

Project Goals

The mosaics should...

- **Enhance Placemaking** Create a distinctive visual identity for Linden and Pine Park that contributes to a strong sense of place and reflects the neighborhood's cultural richness and diversity
- **Unify Art and Function** Integrate sculptural columns and mosaic inlays into the park's layout to frame a flexible performance area, supporting both everyday use and community programming
- **Celebrate Community Identity** Reflect the unique character, history, and aspirations of the surrounding South San Francisco Old Town neighborhood through engaging, site-specific design, and engage the community through the design or creative process
- **Ensure Durability and Longevity** Use durable, weather-resistant materials designed for long-term outdoor display, prioritizing low maintenance and public safety
- **Encourage Artistic Diversity** Wide range of artistic styles and approaches to reflect the richness of artistic expression and resonates with a diverse community
- Align with the City's public art master plan and curatorial guidelines



Design Visuals

Punto de Encuentro

Vibrant patterns referencing serape blankets and traditional Mexican oilcloth, known as “mantel de hule,” coalesce in the courtyard plaza, setting an engaging and unforgettable stage for performances of all kinds, markets, or simply an uplifting colorful backdrop for friends and families gathering in the park.

Both of these ubiquitous and well-loved patterns evoke a sense of home, a safe and comforting feeling as if a blanket spread across the grass or a table cloth covering a picnic table. Together they speak to both simplicity and celebration, with colors and a shine that will never fade and florals that will always be in bloom.



Courtyard mockup

Narrative Concept Description

Re-Building and Celebrating Community, One Tile at a Time

For the New Park at Linden and Pine, these mosaic elements grant reverence to and further define the spaces throughout the park. Enveloping the columns warmly, the serape blanket mosaic is textural and timeless, transforming the columns into a cultural landmark. Safe to the touch, and with colors that will never go out of style, the columns are nonetheless neutral enough to provide backdrop to a plethora of different events, performances, markets, and more.

The ground inlay mosaics radiate out with a comforting familiarity, the curvature of the span complemented by sweeping organic florals likened to traditional Mexican oilcloth patterns. They stretch and swirl, speaking to the columns as a family of well-known textiles, humbly acknowledging and celebrating the everyday lives of so many citizens living in the South San Francisco neighborhood and surrounding areas.

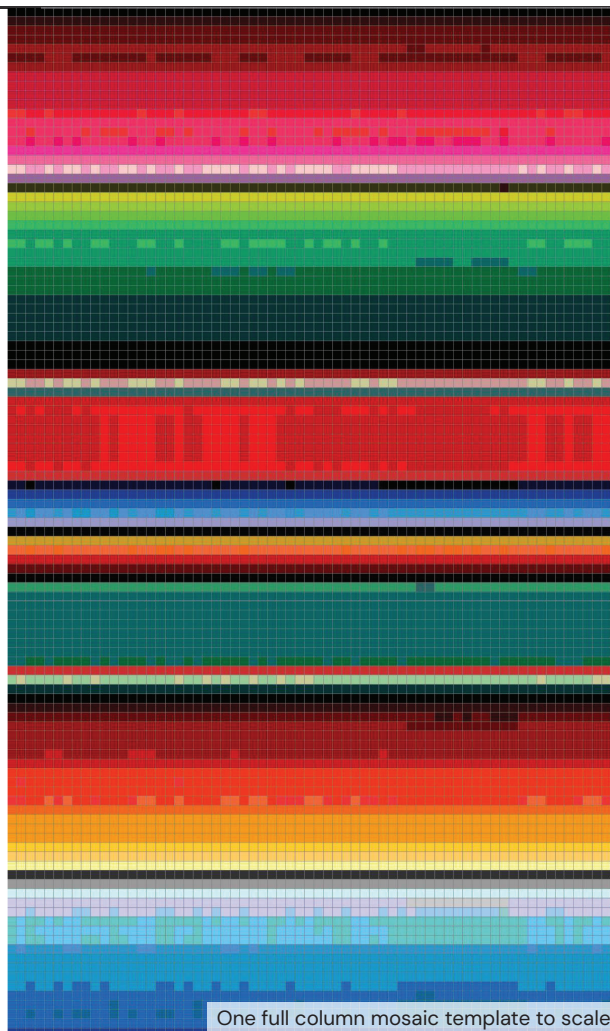
Frequenting the park will be a diversity of residents and visitors over the years and future generations, and these mosaics will become an integral aspect of the atmosphere and identity of the space, making every visit a unique, joyful and memorable celebration.

Columns

Mosaic columns will be created together with the community using our pixel-perfect digital impressionism technique.

160
Community Members

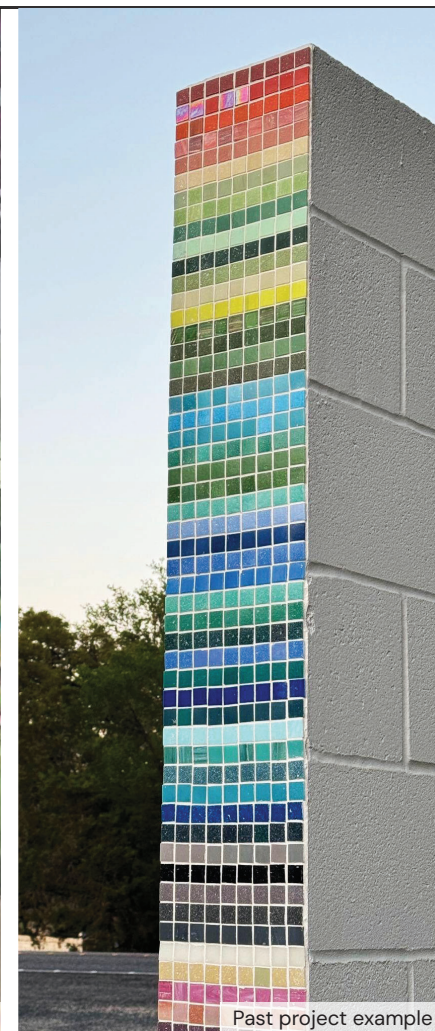
This community-engaged process could include up to 160 community members, each making their own square foot section, which all come together to create the final artwork.



One full column mosaic template to scale



Column mockup



Past project example

Columns Material Texture



Ground Inlay

The ground inlay will be created using the [Lithomosaic™](#) technique where the mosaic is set directly into concrete. [Specs](#)

Vibrant and detailed mosaic oilcloth design, will be a faithful recreation of the digital version without compromising structural stability or weather resistance.



Example project by our team member Lys Santamaria



Lithomosaic Attributes

- **Integral part of the concrete matrix** Unlike traditional mosaics that are surface-level applications, lithomosaics are a part of the concrete's structural matrix. The tiles and other materials are embedded within the wet concrete mix, so when the concrete cures, the entire mass acts as a single, structurally sound unit.
- **Durability and longevity** The use of a structural concrete base gives lithomosaic the inherent durability and longevity of concrete itself. It is highly resistant to wear and tear, making it suitable for high-traffic public areas like sidewalks, parks, and plazas.
- **Resistance to environmental stress** The system is designed to withstand harsh outdoor conditions, including freeze-thaw cycles, without cracking or delamination. The monolithic structure prevents water from seeping underneath the tiles and causing damage.
- **Monolithic pour** A continuous, single pour of concrete for the entire project prevents the separation and weakness that can occur with multi-layered systems. This is known as a monolithic slab and is far more robust than a surface veneer.
- **Reduced maintenance** Because the design is part of the concrete, there is no grout to clean, repair, or replace, which is a common point of failure for traditional mosaics.

Ground Inlay Material Texture



Example lithomosaic detail

Alebrije Play Sculpture

Alebrije (Coyote & Lizard)

Fantastical mythical creatures have a way of sparking the imagination. Alebrijes are perhaps the most poignant example of these in modern day, popularized by Oaxacan artisans carving them in wood and painting them vibrantly as a folk art tradition over the last 100 years.

Geometric spirals represent the life cycle in Zapoteco symbology, radial patterns become stylized scales, and the serape even makes a special appearance here again on the bushy tail, a nod to the columns in the plaza across the lawn.



Alebrije Play Sculpture Concept

Coyote & Western Fence Lizard

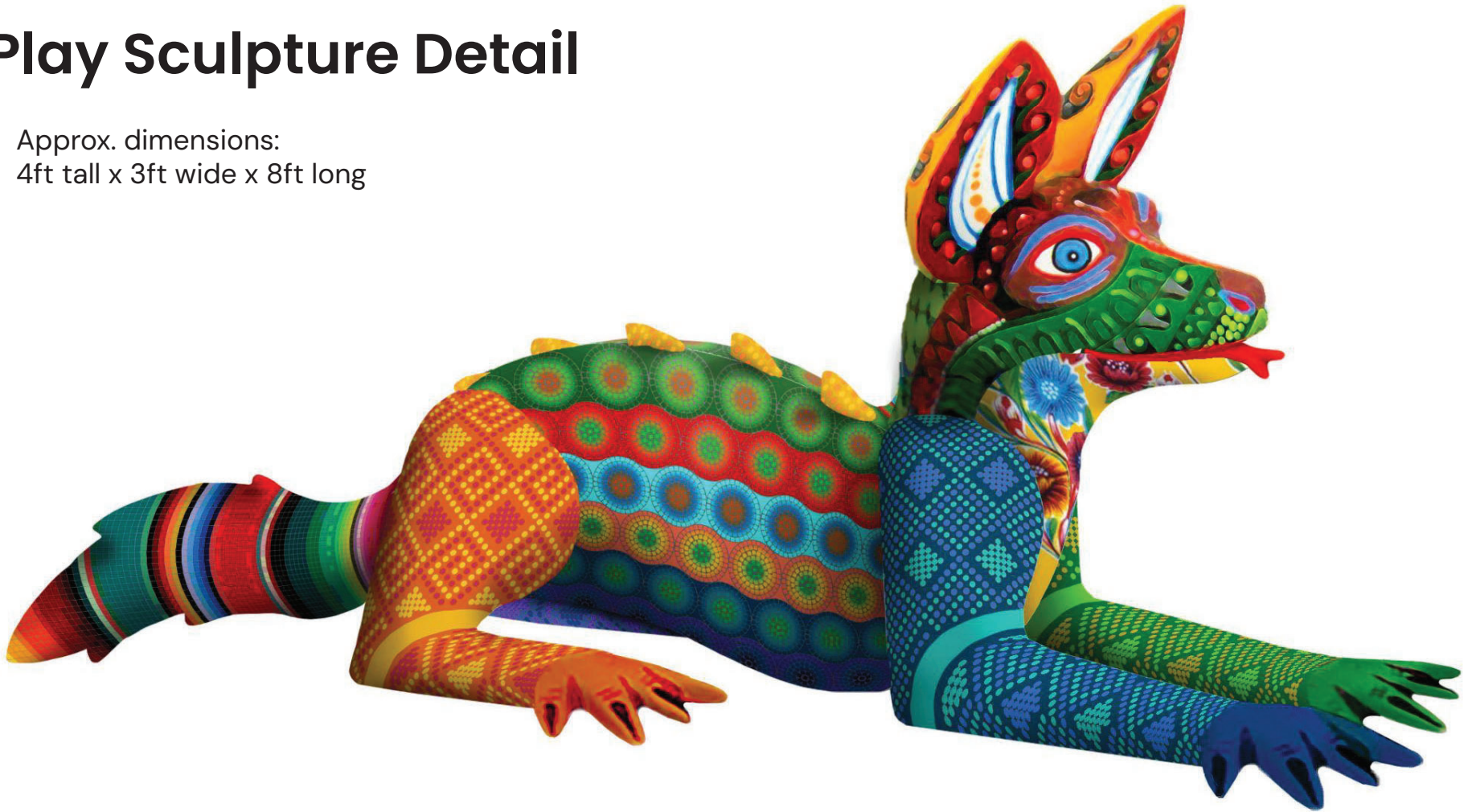
- **Wisdom and Guidance:** In some interpretations, coyotes are seen as a source of wisdom and guides, helping to inspire and protect
- **Tenacity and Intelligence:** The coyote is known for its cleverness and ability to adapt to its environment, making it a symbol of tenacity, skill, and intelligence.
- **Adaptability:** As an animal that thrives in various habitats, the coyote embodies adaptability and resilience.
- The **Western Fence Lizard** is the most common reptile in California, often spotted in sunny patches, Bay Area parks, and even urban and suburban settings. This familiarity and its striking blue belly, coupled with the Coyote make for a unique yet relevant feature.

Alebrije Symbolism

- **Spirit Animals/Guides:** Alebrijes are considered spirit animal guides that can connect with individuals sharing similar traits or skills.
- **Protection and Good Fortune:** The whimsical sculptures are believed to offer protection from evil spirits and bring good luck.
- **Celebration of Imagination:** Alebrijes are vivid expressions of imagination, creativity, and the vibrant spirit of Mexican culture.

Play Sculpture Detail

Approx. dimensions:
4ft tall x 3ft wide x 8ft long



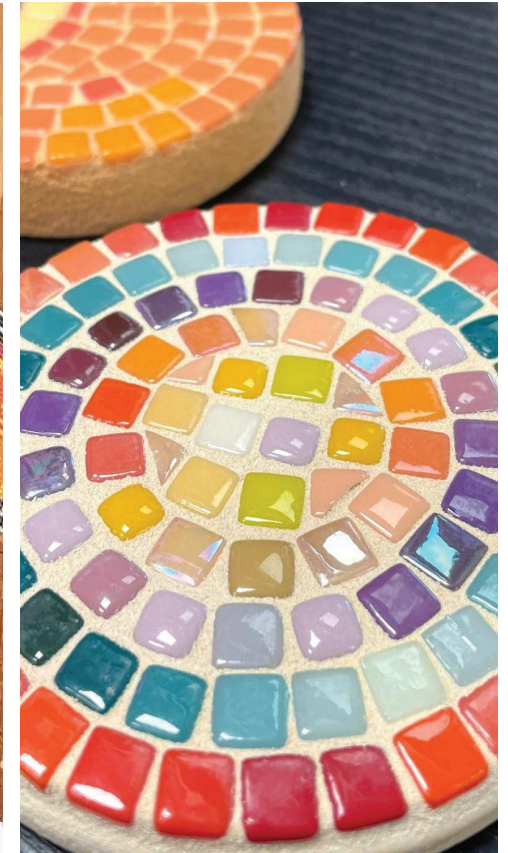
Play Sculpture Material Texture



Sculpture will have radial florets like this in a rainbow of colors



Similar 8mm tiles in a gridded pattern



Play Sculpture Form Examples



Past project examples, mosaic longhorn created by community members in artist-led workdays and a recent study of a Luna moth



Community Participation



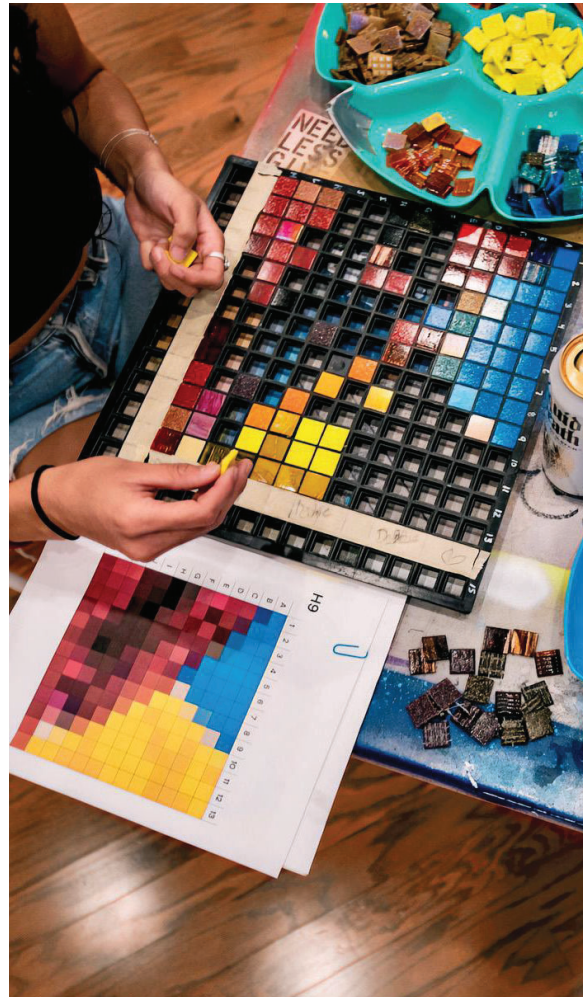
Pixel Workshops

Up to 160 people can help create the column mosaics!

Participants place tiles into grids following a simple guide (similar to a color-by-numbers) to create a square-foot section of the mural

Once a participant completes a section, we lay a sheet of strong mosaic tape on top to secure it

- All ages, abilities, and experience levels welcome
- Instills ownership and pride in shared public space
- Taps into a meditative creativity
- Builds community camaraderie



Past Pixel Workshops



Optional Addition — Milagros Custom Ceramic Tiles

Integrated into mosaic columns

Ceramic tile-making workshops allowing community members to stamp their own milagros or loteria designs.

These tiles create moments of connection, education, and reflection in the viewer, allowing for meaningful engagement between workshop participants and park visitors. It gives everyone who takes part a sense of ownership of the artwork.

Ceramic tiles would be approx. 2.25in squares to integrate seamlessly into the pixelated serape pattern at eye level



Example tiles by Dana Perrotti



Community workday from project at Ciquio Vasquez Park

Material and Technical Overview



Columns Material — Vitreous Glass Tile



Morjo™ Vitreous ¾ inch Glass Tile

Artist-grade vitreous glass mosaic tiles with a wide color range and high-quality pigmentation

Iridescent and metallic shimmer tiles bring depth and nuance

Textured backs ensure strong permanent bond with thinset

Frost proof, impervious to liquid, colorfast, UV-resistant, suitable for outdoor mosaics

Easy to clean, low-maintenance

Ground Inlay Material — Smalti



Mexican Smalti

Smalti is 100% waterproof & freeze-proof, impervious to liquid, colorfast, UV-resistant, safe for use in outdoor applications.

Available in a rainbow of **over 1000 colors**, this artisanal glass will perfectly depict the vibrant oil cloth patterns.

We source smalti directly from **MVM Studios** factory in Jiutepec, Mexico, the first glass mosaic factory in America fusing Italian heritage of the great Murano masters.

Sculpture Substrate Base — Ferrocement



Ferrocement sculpture, smoothing & detailed shaping



Cross section of metal armature with cement reinforcement and mosaic finish

Ferrocement is a technique of building incredibly strong sculptural forms by layering steel mesh and rebar with thin coats of cement.

My team at The Mosaic Workshop and I recently took a ferrocement workshop with the accomplished sculptural mosaic artist James Talbot and we will use these techniques to create the form of the alebrije.

This is a very common organic building method that is budget friendly and robust for children to play on and climb while lasting a very long time

Sculpture Mosaic Material — Vitreous Glass Tile



[Morjo™ Recycled 8mm Tiles](#)

[Morjo™ 12mm Thinny-Pennies](#)

Artist-grade vitreous glass mosaic tiles with a wide color range and high-quality pigmentation.

Factory edges are smooth, won't crack, and are great for high-touch areas.

Frost proof, impervious to liquid, colorfast, UV-resistant, suitable for outdoor mosaics.

Installation Material – Thinset & Grout



For wall-based installations we exclusively use:

[Laticrete Platinum 254 Thinset](#)

[SPEC SHEET](#)

The ultimate one-step, polymer fortified, thin-set mortar for interior and exterior installation of tile, superior for exterior and submerged applications, 25-year system warranty

[Laticrete Permacolor Select Grout](#)

[SPEC SHEET](#)

Greenguard certified for low chemical emissions, Never Needs Sealing – Equipped with STONETECH® Sealer Technology, Exceeds the ANSI A118.7 requirement, the highest cementitious grout standard ensuring durability and stain resistance.

[Laticrete Spectralock 1 Premixed Grout](#)

[SPEC SHEET](#)

Professional grade, offers all the benefits of SPECTRALOCK® epoxy grout. Exceptional durability and extreme versatility. Features built-in Microban® antimicrobial protection fights the growth of mold and mildew on grout surface.

Routine Maintenance



Annual inspection of the columns and sculptural mosaic:

- Checking for any cracks in grout or chipped tiles
- Glass or multi-surface cleaner, water, and microfiber towel or rags can be used for general cleaning as needed
- In case of any stubborn issues such as scuffs or vandalism, wipe down with paint thinner or mineral spirit solvent, Goof Off etc.
- Solution of vinegar water will remove persistent grout haze

Lithomosaic:

- Follow Lithocrete Paving Cleaning and sealing care procedures
- Surfaces exposed to salts, chlorine, and chemicals should be washed daily with potable water
- Pressure wash at the first sign of calcification or salt build up and reseal with Litho Seal and a waterproofing sealer

Conducting Repairs



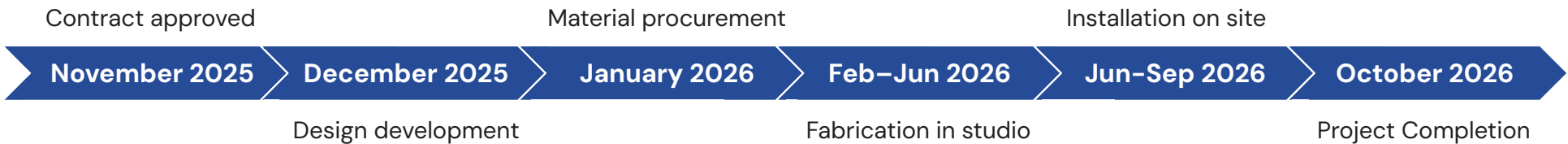
Should any tiles need replacing in the years to come:

- Chisel out the tile
- Scrape out any remaining thinset and grout from the area and brush clean
- Find a similar piece of material (size, shape, and color)
- Replace the tile using thinset or Construction-Grade Gorilla Glue, letting it dry/cure before grouting around it. Recommended Laticrete Spectralock 1 premixed epoxy-performance grout
- Make sure that repairs do not leave any sharp edges, as those should be properly smoothed down with a diamond file or Dremel tool

Budget

Item	Description	Cost
Design	Pixel column mapping and templating, preparing lithomosaic reference sheets to scale, play sculpture mapping. 80 hours at \$75/hr	\$6,000
Materials: Columns	Vitreous glass tile, mosaic tape, templates	\$8,000
Materials: Optional Milagros Tiles	Porcelain cone 5 clay, Mayco glazes, stamp textures	\$500
Materials: Ground Inlay	Smalti glass, fiberglass mesh, adhesive	\$12,000
Materials: Play Structure	Cement, rebar, lath metal mesh, 8mm ottoman tiles, penny round tiles	\$5,000
Fabrication: Columns	Pixel mosaic fabrication \$150/sqft (1.5 feet in diameter and 8 feet tall, approx. 150 sqft) Pixel workdays, optional milagros ceramic workshops	\$22,000
Fabrication: Ground Inlay	Smalti mosaic on mesh fabricated in-studio \$225/sqft (approx. 224 sqft)	\$50,000
Fabrication: Play Sculpture	Ferrocement sculpture, mosaic finishing. 360 hours at \$75/hr	\$27,000
Installation: Columns	Four people for three days on-site setting, grouting, and cleaning mosaic	\$7,000
Installation: Ground Inlay	Lithomosaic concrete pour on-site	\$5,000
Structural engineering	Engineer approval of sculptural integrity	\$2,000
Shipping and transportation	Freight shipment or truck rental and travel	\$5,000
Travel	Flights for 4 people & rental car for 7 days	\$3,500
Per Diem & Hospitality	\$259 FY 2025 local per diem for 4 people for 7 days	\$7,000
Contingency	5%	\$8,000
Total Cost		\$168,000

Project Timeline



Thank you!



JMuzacz.com



JMuzacz@gmail.com



512-497-1492



@JMuzacz

