



FY 2023-24 Proposed Sewer Rate Plan

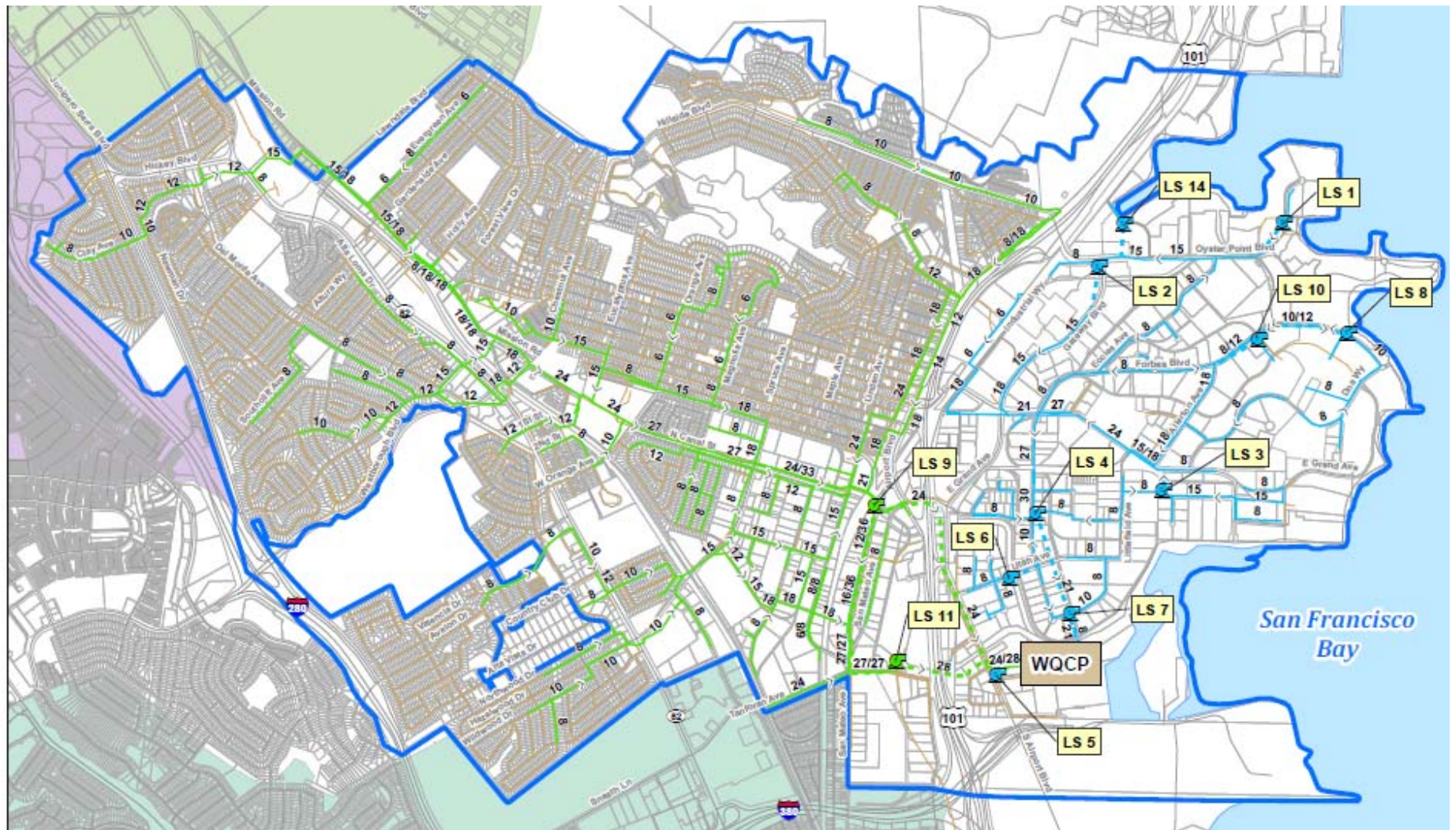
City Council Meeting, June 14, 2023

Presentation Overview

- Sewer Fund Background
- Sewer Rate Plan
- Infrastructure Investments
- Council Questions and Discussion

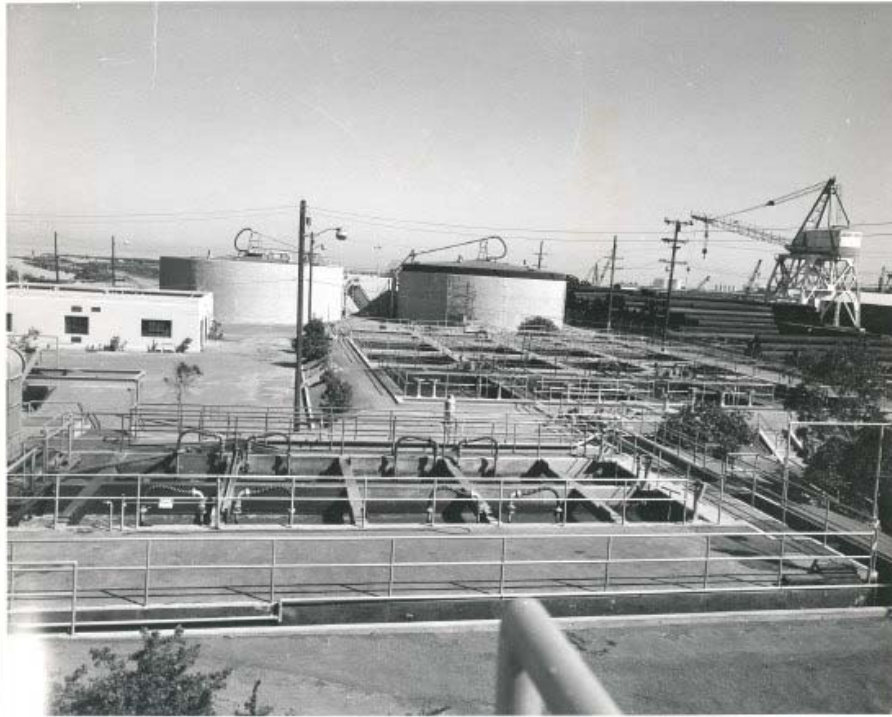


Sewage Collection System



165 Miles of Sewer Line Connecting All of South San Francisco including Thirteen Major Sewage Pumping Stations

Wastewater Treatment Plant

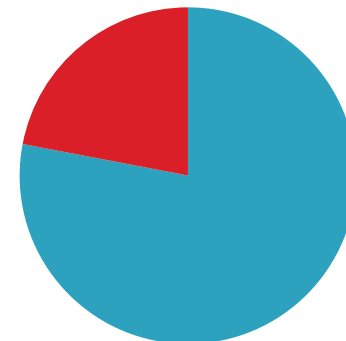


1952



2023

South San Francisco -
San Bruno Partnership



■ SSF
■ SB

Sewer Rate Plan

	<u>FY 2022-23</u>	<u>FY 2023-24</u>	<u>FY 2024-25</u>	<u>FY 2025-26</u>	<u>FY 2026-27</u>
Single Unit Residential	\$768 per EDU (2% Increase)	\$791 per EDU (3% Increase)	\$815 per EDU (3% Increase)	\$839 per EDU (3% Increase)	\$864 per EDU (3% Increase)
Multi-Unit/Trailer Residential	\$691 per EDU (2% Increase)	\$712 per EDU (3% Increase)	\$734 per EDU (3% Increase)	\$755 per EDU (3% Increase)	\$778 per EDU (3% Increase)
Commercial*	(2% Increase)	(3% Increase)	(3% Increase)	(3% Increase)	(3% Increase)

*Minimum commercial rate is tied to Single Unit Residential

Keeping Rates Low

Low-interest CWSRF funding resulting in a lower interest rate on debt service; and

4 million dollars in principal forgiveness

The CWSRF targets critical green infrastructure, energy efficiency improvements, and other environmentally innovative projects.

Impact Fee offset

Impact fees paid by Developers offset rates by \$16.5 million



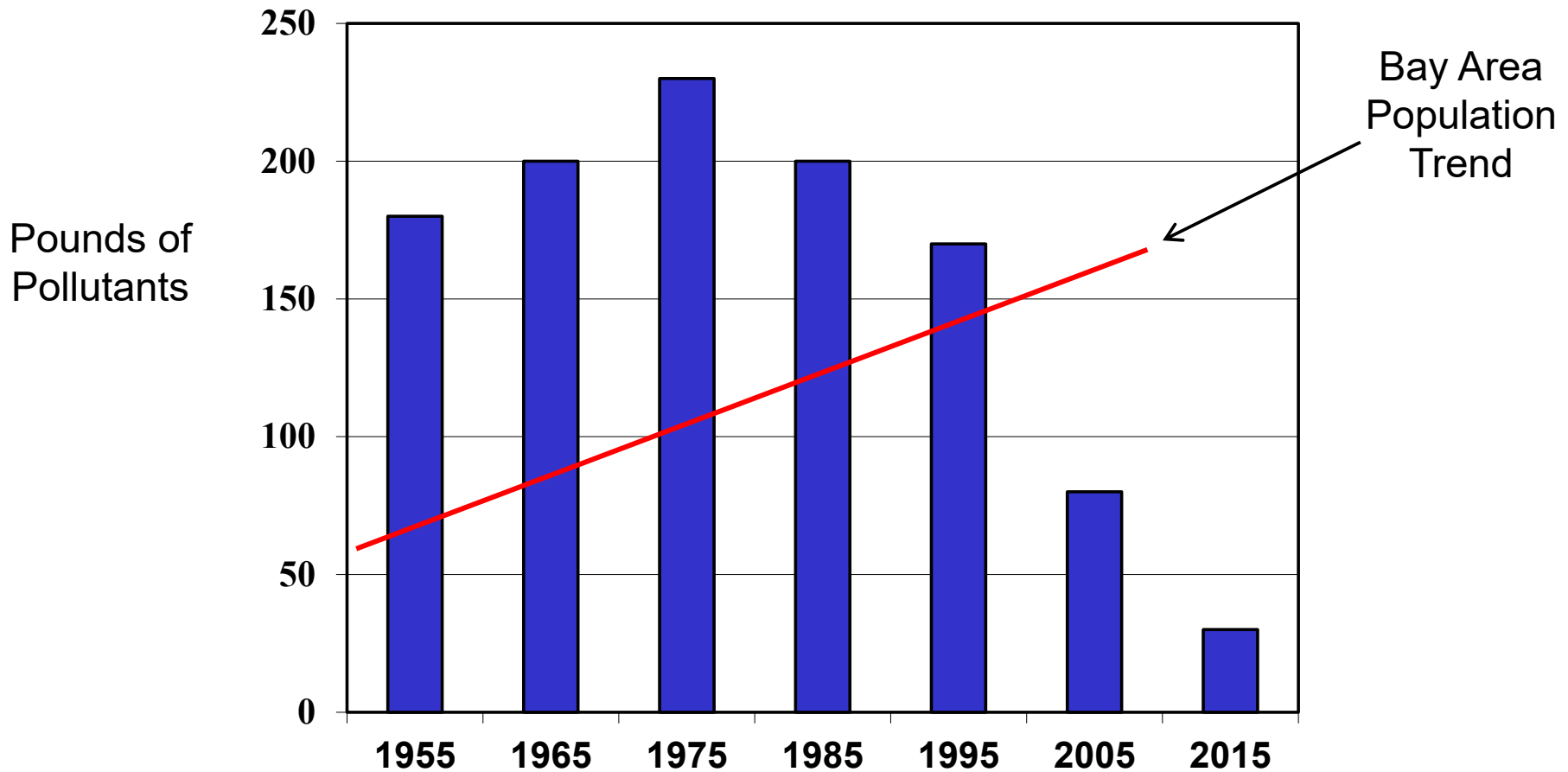
	Monthly Charge \$
City/Agency	(Rounded)
Hillsborough	319
Burlingame Hills SMD	158
Crystal Springs CSD	146
Emerald Lake Hts SMD	143
Montara WSD	136
Foster City	127
Millbrae	120
San Mateo	119
San Carlos	117
West Bay SD (Menlo Park)	107
Pacifica	97
Belmont	95
San Bruno	94
Redwood City	89
Half Moon Bay	88
Fair Oaks SMD	85
SSF (FY 2023-24: 3% Increase)	66
Brisbane	57
Burlingame	56
East Palo Alto SD	50
Daly City (NSMCSD)	45
Bayshore SD	39

The City's residential sewer rates will remain among the lowest in San Mateo County

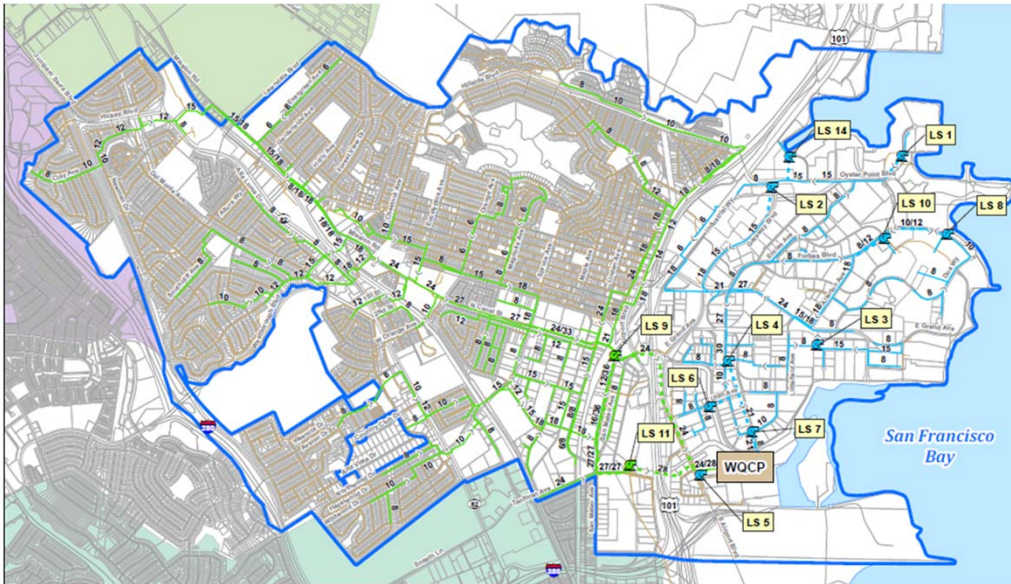
Infrastructure Investments



San Francisco Bay



Loadings of Pollutants to the Bay from Sewage treatment Plants vs Population



Questions and Discussion