



Bike Lanes *for* *the* Boulevards

BICYCLE & PEDESTRIAN COMMITTEE

July 17, 2024

Lawrence Henriquez
Senior Engineer, P.E.
Lawrence.Henriquez@ssf.net
650.829.7662



SHAPING A SMARTER
TRANSPORTATION EXPERIENCE™
DKSASSOCIATES.COM



AN EMPLOYEE-OWNED COMPANY

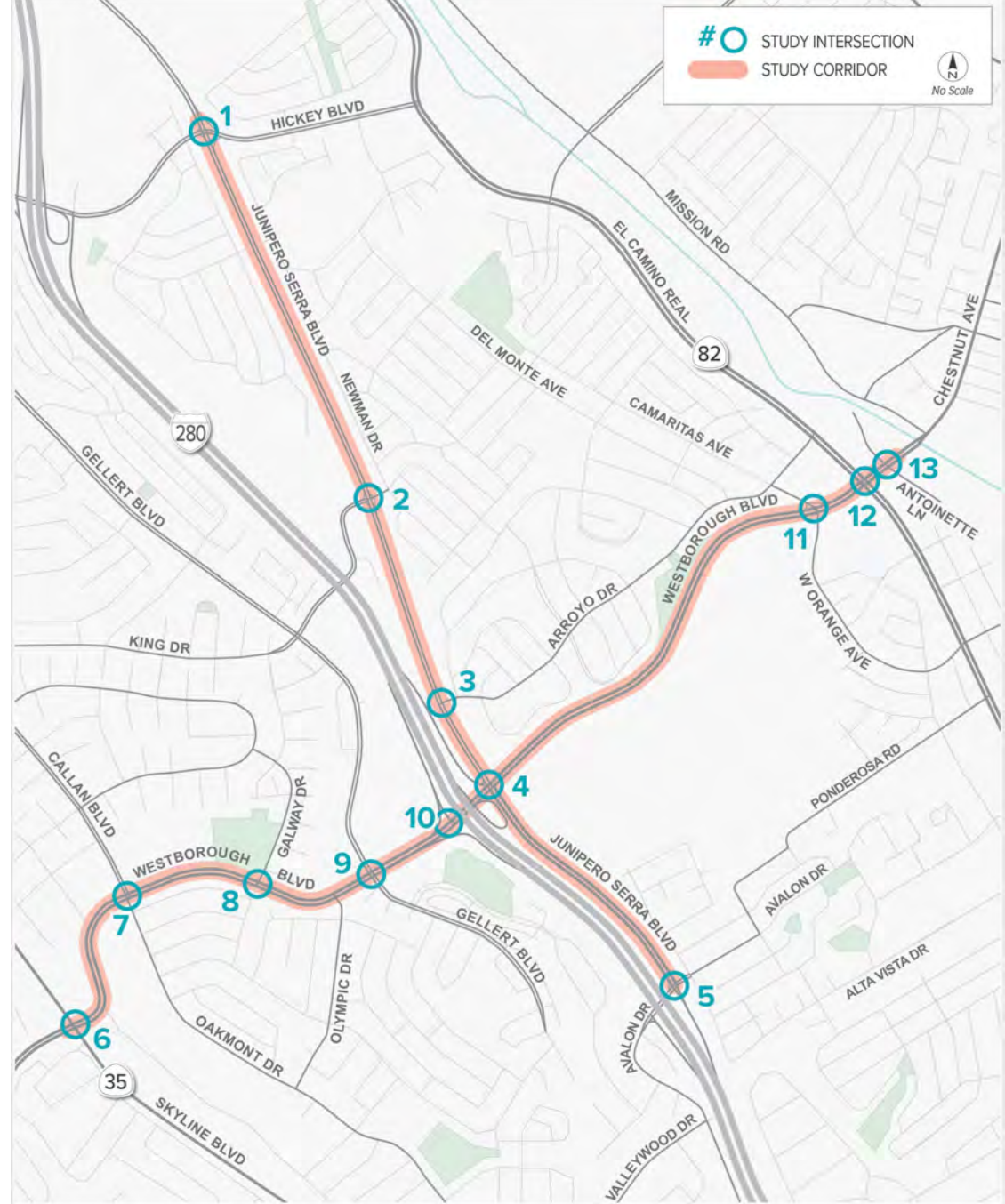
AGENDA

- 1 / PROJECT OVERVIEW**
- 2 / REVIEW OF POTENTIAL SOLUTIONS**
- 3 / COORDINATION WITH OTHER CITY PROJECTS**
- 4 / NEXT STEPS**

PROJECT AREA

Junipero Serra Boulevard between Hickey Boulevard and Avalon Drive

Westborough Boulevard between Skyline Boulevard and Antoinette Lane

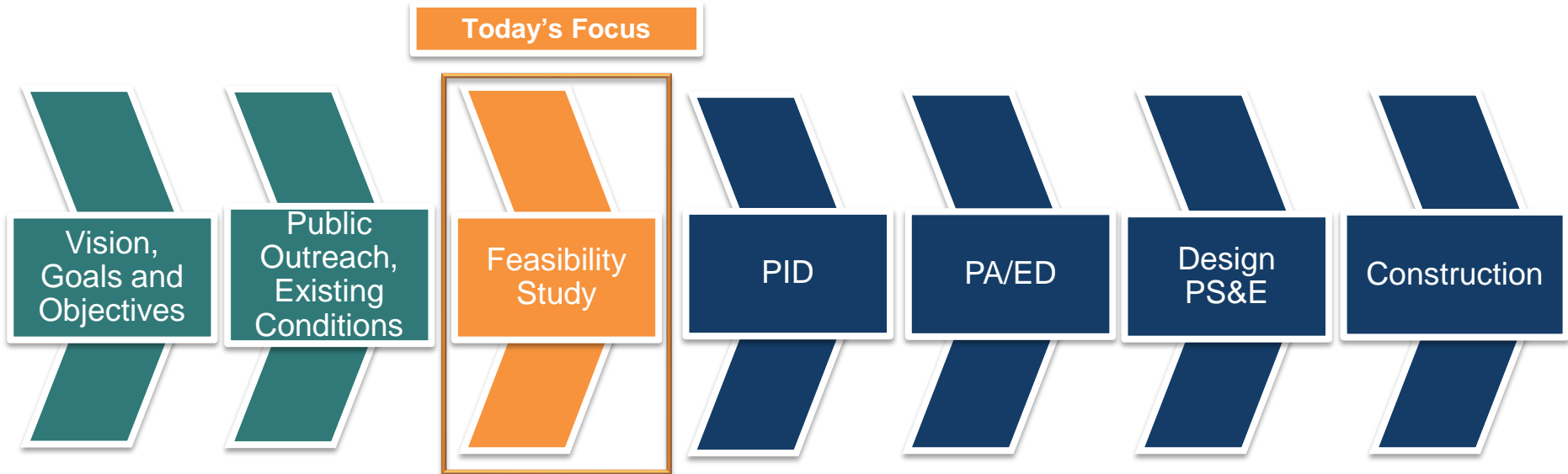


PROJECT BACKGROUND

- Plan for bicyclists and pedestrians
 - Active South City Report (June 2022)
- **High level of traffic stress for bicyclists** on both roadways
- **Missing sidewalks** on both roadways
- Westborough Boulevard - **High Percentage of Crashes/Injuries**



PROJECT PROCESS AND TIMELINE



JUNIPERO SERRA BOULEVARD AND WESTBOROUGH BOULEVARD TODAY



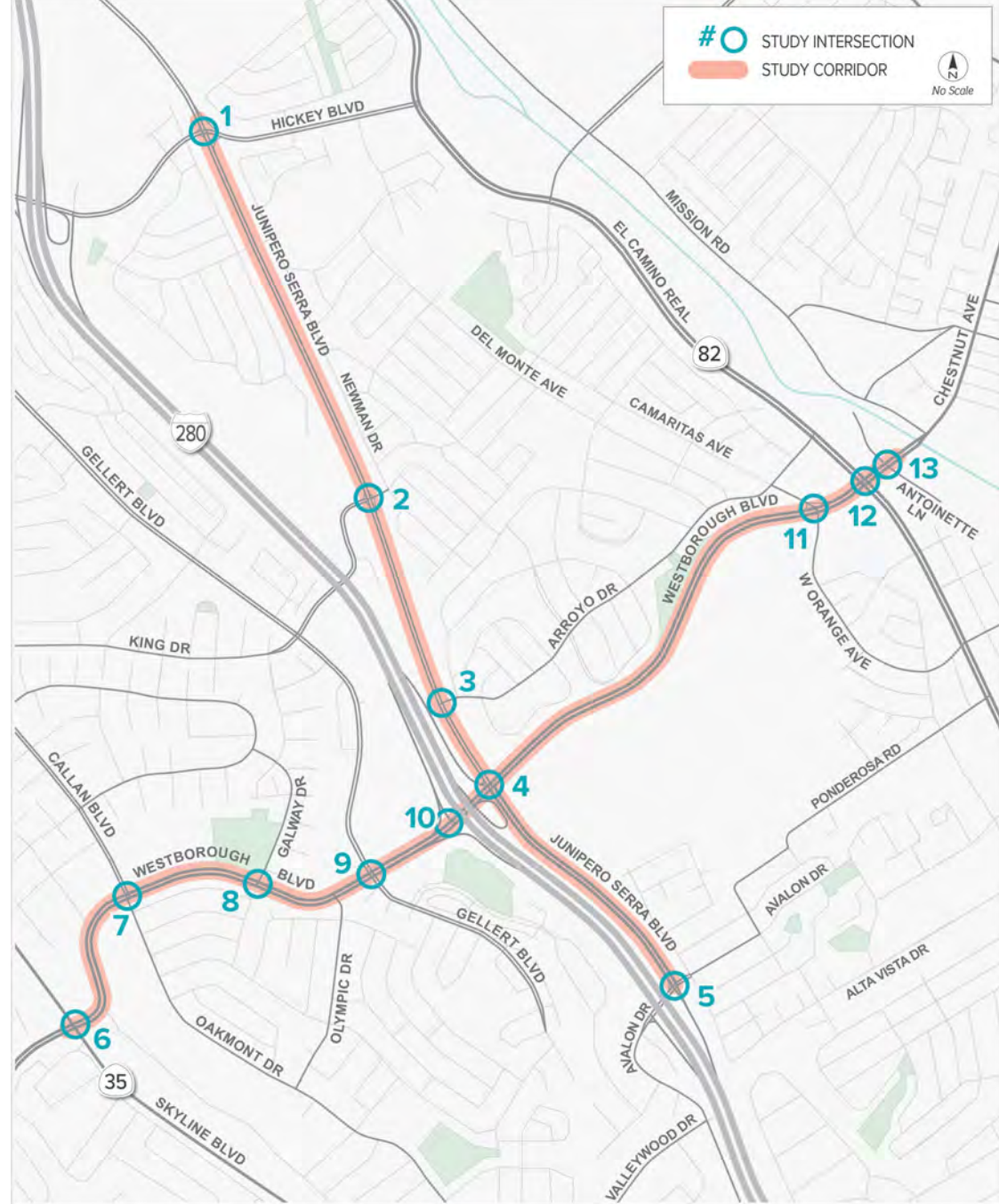
Northbound Junipero Serra Blvd at Arroyo Drive



Westbound Westborough Boulevard west of Camaritas Avenue

PROJECT GOALS

- Improve **safety**, **accessibility** and **mobility**
- Install **low stress bikeway facilities** and **sidewalks**



OUTREACH DONE SO FAR

Four Pop-Up Events

- > National Night Out
- > Library – Grand Opening
- > Farmer’s Market
- > St. Augustine Church
- > Community Workshop – Civic Campus



SOCIAL PINPOINT

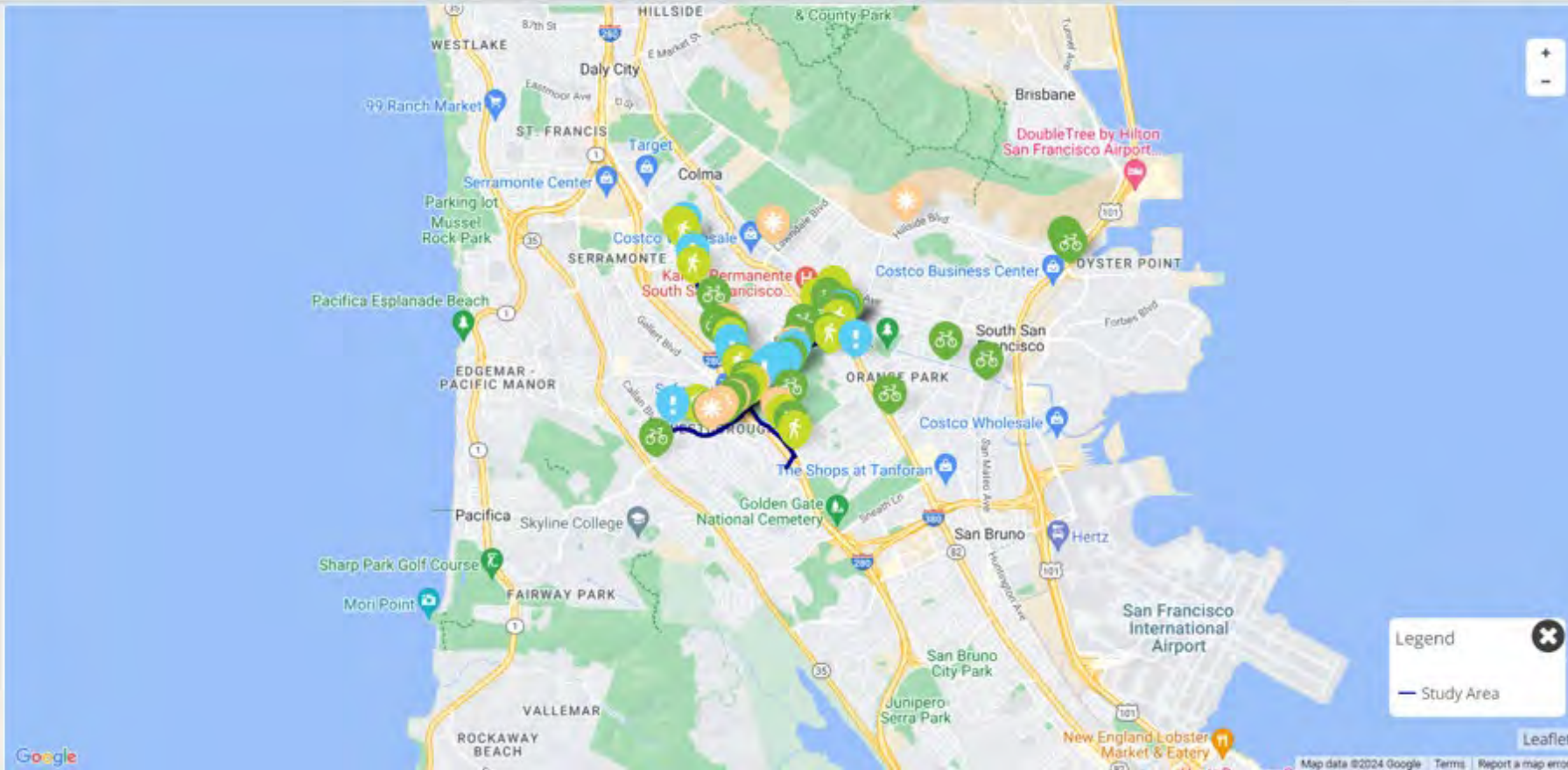


Bike Lanes for the Boulevards

- Drag to comment
- Pedestrian Concerns
- Bike Concerns
- Other Comments
- Safety Concerns

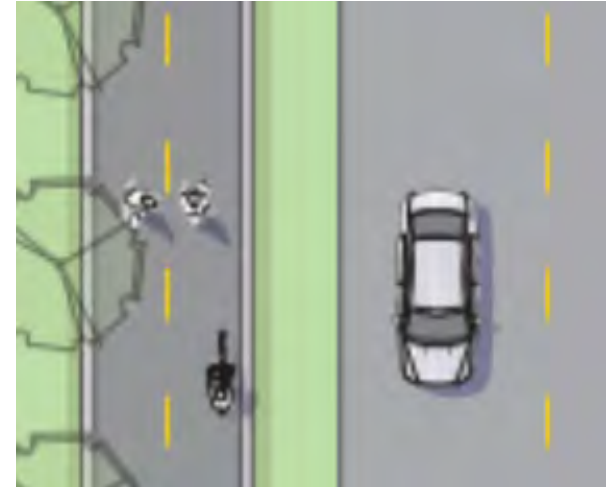


- About
- Comments
- Contact Us



DIFFERENT TYPES OF BIKE LANES

- **Class I** – Shared-Use or Multi-use trails/paths, fully separated facilities for pedestrians and bicyclists
- **Class IV** – Separated or protected bike lanes/cycle tracks - exclusive use by bicycles (no pedestrians). There can be horizontal or vertical separation such as flexible posts, on-street parking, planters, grade separation



Class I – Bike Path (Source: Have your Say Monterey, 2021)



Class IV – Separated Bikeway (Source: Have your Say Monterey, 2021)

JUNIPERO SERRA BOULEVARD

- Shared/Multi-Use Path: Class 1 Pedestrian and Bike Facility (off-street) on the east side of Junipero Serra Boulevard



Class I Multi-Use Path in Goleta, CA (Source: City of Goleta website)



Class I Multi-Use Path in Goleta, CA (Source: Google Maps)

DIFFERENT TYPE OF BIKE LANES

Two-way Class IV bikeway
on one side of the roadway.



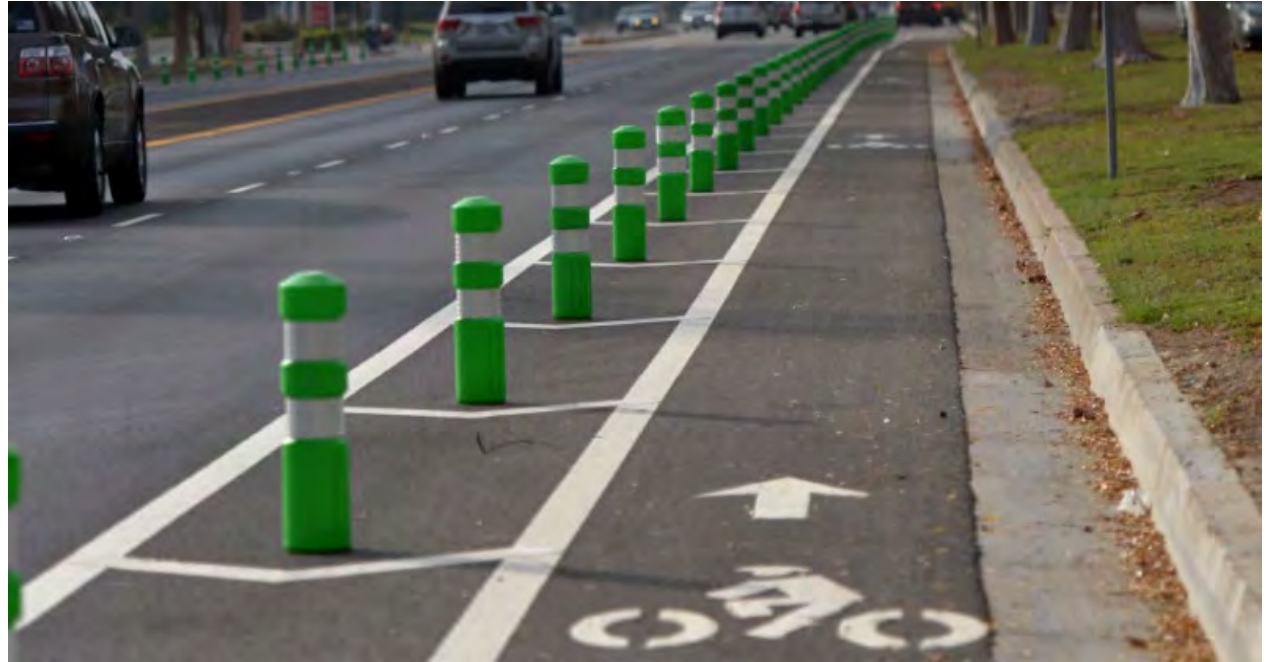
*Two-Way Separated Bikeway, N 12th Street, Sacramento
(Source: Google Maps)*



*Two-Way Separated Bikeway, SFO Airport, N Access Road
(Source: Google Maps)*

DIFFERENT TYPES OF BIKE LANES

- **Directional Class IV (separated) bikeways** on both sides of the roadway



Source : Google Maps

MEDIAN BIKE LANES



3rd Avenue/S Norfolk Street (Source: Google Maps)

INNOVATIVE INTERCHANGE CONFIGURATION - EXAMPLE

https://www.youtube.com/watch?v=_Z5zJWm4Xdl&t=2s

OTHER IMPROVEMENTS IN THE AREA

- Traffic signal at Junipero Serra Boulevard/Arroyo Drive – under design currently
- At Clay Avenue, pedestrian overhead crossing will be removed and intersection will be signalized



Pedestrian Overhead Crossing at Clay Avenue (Source: Google Maps)

JUNIPERO SERRA BOULEVARD (QUICK BUILD PROJECT BY CITY)

- Project starts in Fall 2024
- Funding received to install K-71 Bollards for Buffered bike lanes



K-71 bollards (Source: Google Maps)

NEXT STEPS

- Complete feasibility study by Fall 2024
- Begin PID/PAED Phase Spring 2025
- Begin Design Phase (TBD)
- Begin Construction (TBD)



Bike Lanes *for* *the* Boulevards

Thank you!

LAWRENCE HENRIQUEZ

Senior Engineer, P.E.

Lawrence.Henriquez@ssf.net

650.829.7662

