



- [INFO \(/\)](#)
- [MODELS](#)
- [COFFEE TRIKES \(/COFFEE-TRIKES\)](#)
- [BOOK BIKES \(/BOOK-BIKES\)](#)
- [CARGO TRIKES \(/CARGO-TRIKES\)](#)
- [VENDING TRIKES \(/VENDING-TRIKES\)](#)
- [E-ASSIST|SOLAR \(/EASSIST\)](#)
- [VIDEOS \(/VIDEOS\)](#)
- [FAQ \(/FAQ\)](#)
- [PRICING \(/PRICING\)](#)
- [PRESS \(/PRESS\)](#)
- [CONTACT \(/CONTACT-1\)](#)



Book Bikes

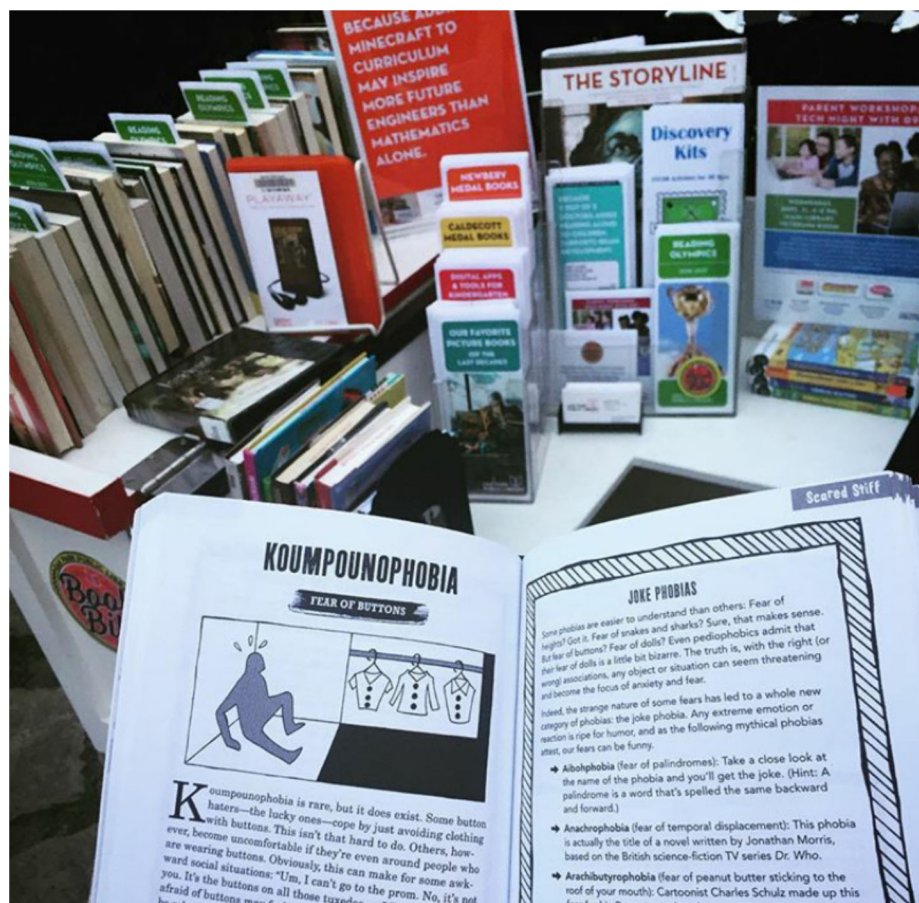
Models

COFFEE TRIKES (/ COFFEE-TRIKES)

BOOK BIKES (/BOOK-BIKES)

CARGO TRIKES (/ CARGO-TRIKES)

VENDING TRIKES (/ VENDING-TRIKES)



Book Bikes

STANDARD BOX INTERIOR: 30.75" L | 21.5" W | 20" T
· \$3650-\$3800

TECHNOLOGY BOOK BIKE: 36" L | 21.5" W | 24" T
· \$3650-\$3800

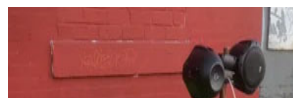
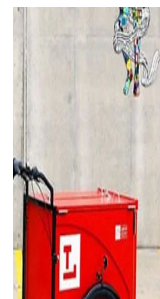
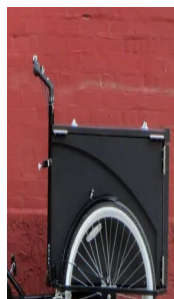
We built North America's very first Book Bike with Chicago's Gabriel Levinson in 2008. For over a decade we've been building very durable, smooth riding and attention grabbing Book Bikes for libraries and schools across the US and Canada. We have several repeat library system customers, and incorporate their suggestions from years of use into the newest builds.

Our Book Bikes are based on our original cargo trike frame, but open up in an unexpected way. They simply turn inside out. The lid and front are split, and the lids become two side tables with the fronts supporting their weight. Both side tables have book

ends. The front can have chalkboard paint or bookmark/postcard holding hardware. Inside the box is an adjustable L shaped book shelf, and the floor of the trike is fully open as well, for three levels of book display. The lowest level is particularly suited for children's books, as it's low enough for them to explore themselves, and the wheels and mechanical parts are far away from little fingers. The upper level is the same height as a kitchen counter, so it's comfortable for adults as well. An umbrella holder is standard. The outside of the trike when closed is just under 32", sized to fit North American standard 36" exterior doors, so you can get in and out of the library, and almost anywhere else.

The Standard Book Bike is sized to be filled with books (up to 260 pounds, about 200 is average), and still be light enough for a non-athlete to pedal for miles while still having plenty of display space when open. Our Technology Book Bike is simply 5" longer and 4" taller. They carry the same amount of weight. The additional volume is for carrying additional electronic equipment, like tablets, laptops, hot spots, and even battery systems and projectors for movie nights. There is more height between shelves, and an additional shelf at the handlebars for your electronics.

We can also add an electric assist, for longer distances or hilly environments.





3427 D ST., POWER PLANT 2ND FLOOR, PHILADELPHIA,
PA 215.840.8842 INFO@HALEYTRICYCLES.COM ([MAILTO:INFO@HALEYTRICYCLES.COM](mailto:INFO@HALEYTRICYCLES.COM))