



# School Traffic Safety Enhancement for Everyone (S.E.E) at School Street

City of South San Francisco

# Agenda

- Introductions
- Project Overview & Background
- Timeline
- Community Outreach
- Draft Design
- Questions / Discussion

# Project Overview



## Project Summary

The City is currently designing physical improvements to the streets adjacent to Martin Elementary School

## Goals

- Improve safety
- Enhance accessibility for all travelers
- Implement community-driven design solutions

# Project Location



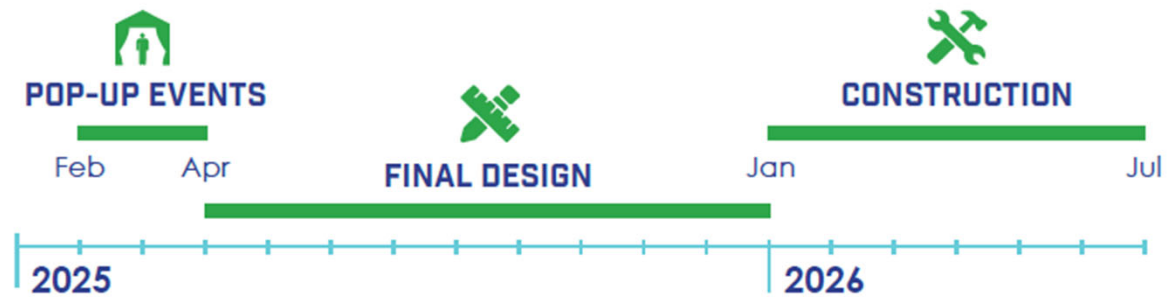
## Locations

- 1 School Street/Spruce Avenue between Hillside Boulevard and Beech Avenue
- 2 Hillside Boulevard from School Street/Spruce Avenue to Drake Avenue



# Timeline

## **TIMELINE**



# Project Background

San Mateo  
County Youth-  
Based High  
Injury Network  
(2022)



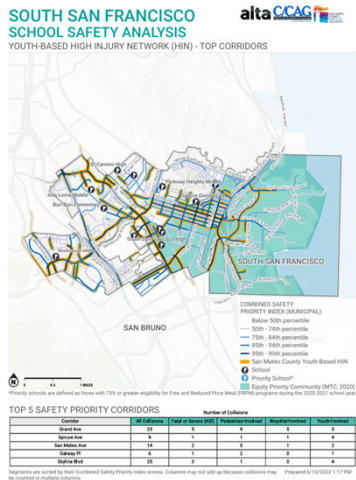
SSF Active  
Transportation  
Plan (2022)



Martin  
Elementary  
Walk Audit  
(2022)



Martin Elementary  
Demonstration  
Projects (2023)



Martin Elementary School:  
Safe Routes to School Workshop Summary

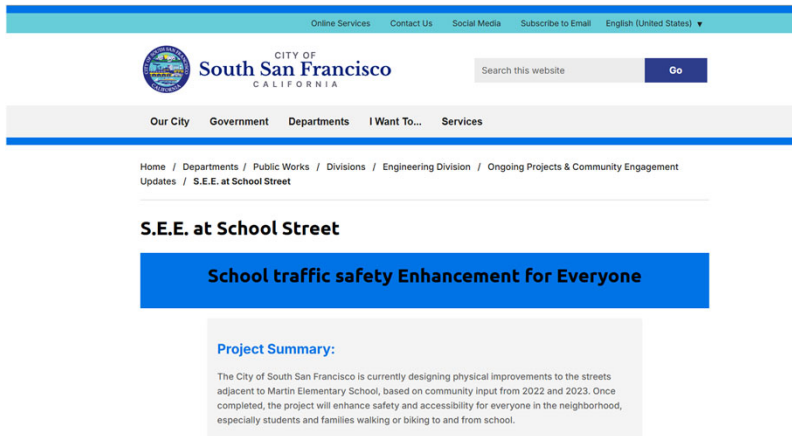
Prepared for: The Martin Elementary School Community  
Prepared by: Mark Fenton, Public Health, Planning, and Transportation Consultant; April 2022



Intercept walk analysis, April 26, 2022



# Community Outreach



## Outreach Activities

- Project Webpage
- 3 Pop-Up Events
  - Lunar New Year Night Market (02/07)
  - Linden Park Open House (03/01)
  - Martin Elementary School (03/04)
- Virtual Meeting with Student Safety Patrol (03/19)

# Community Outreach



## Future Outreach Activities

- Flyers to be shared with nearby residents/businesses
- Town Hall Event at the Alice Bulos Community Center – June 8th
- Additional Stakeholder Meetings (still to be determined)

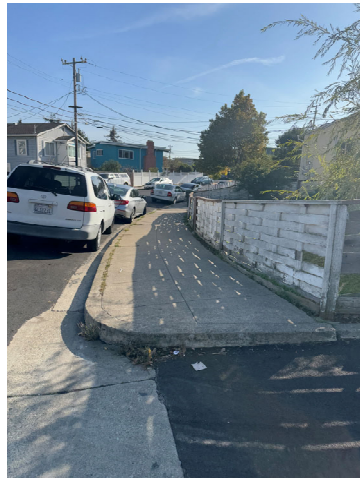




# Community Issues/Concerns



- Long crossing distances
- Limited visibility at crossings and intersections
- Failure of vehicles to yield to pedestrians or fully stop at stop signs
- Flooding after rain
- Vehicle congestion during pickup and drop off
- Unclear red “No Parking” zones
- Inaccessible sidewalks and curb ramps
- Perceived speeding



# Draft Design

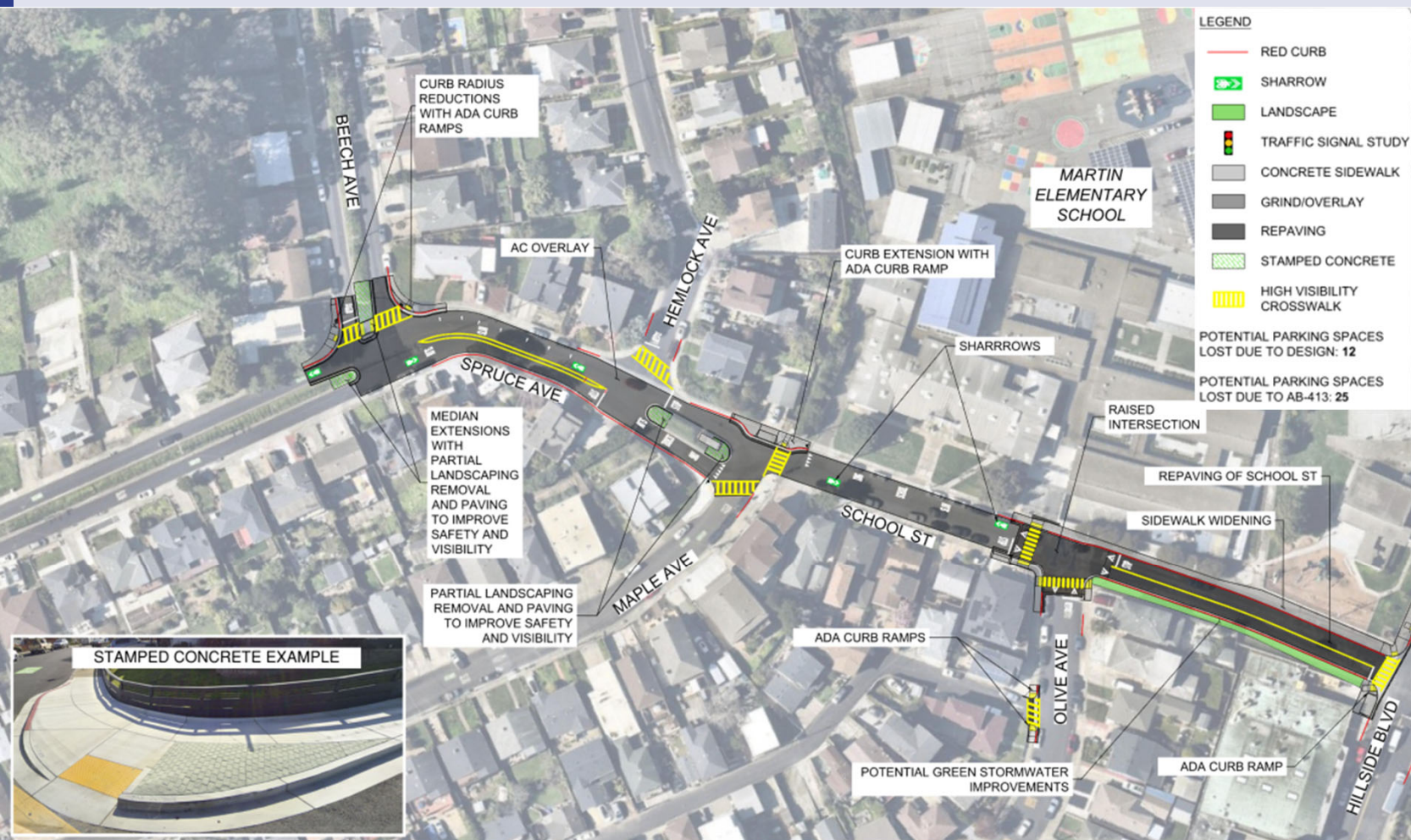


- LEGEND
- RED CURB
  - SHARROW
  - LANDSCAPE
  - TRAFFIC SIGNAL STUDY
  - CONCRETE SIDEWALK
  - GRIND/OVERLAY
  - REPAVING
  - STAMPED CONCRETE
  - HIGH VISIBILITY CROSSWALK
- POTENTIAL PARKING SPACES LOST DUE TO DESIGN: 12
- POTENTIAL PARKING SPACES LOST DUE TO AB-413: 25

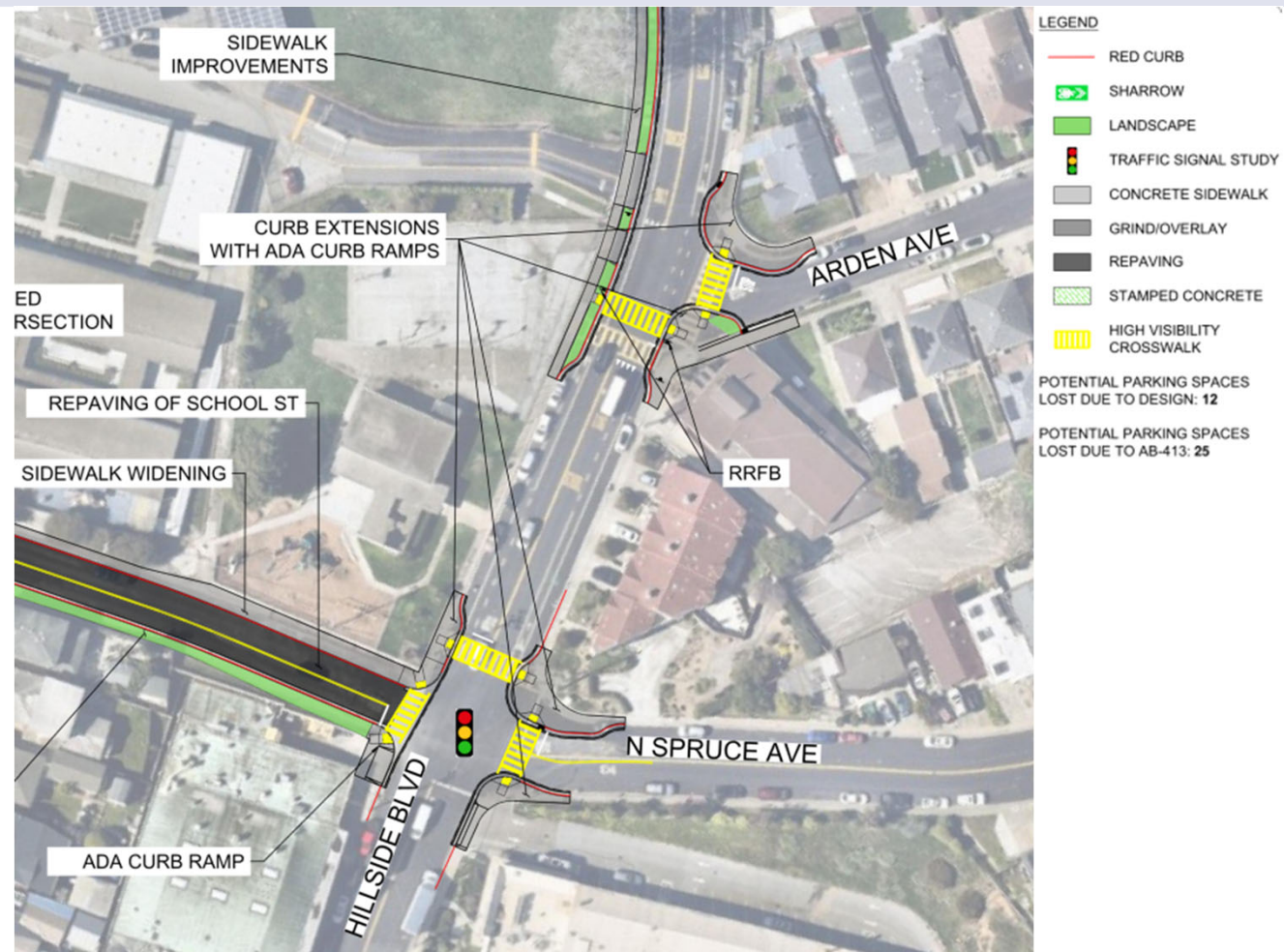




# Draft Design – School St (Beech Ave – Hillside Blvd)

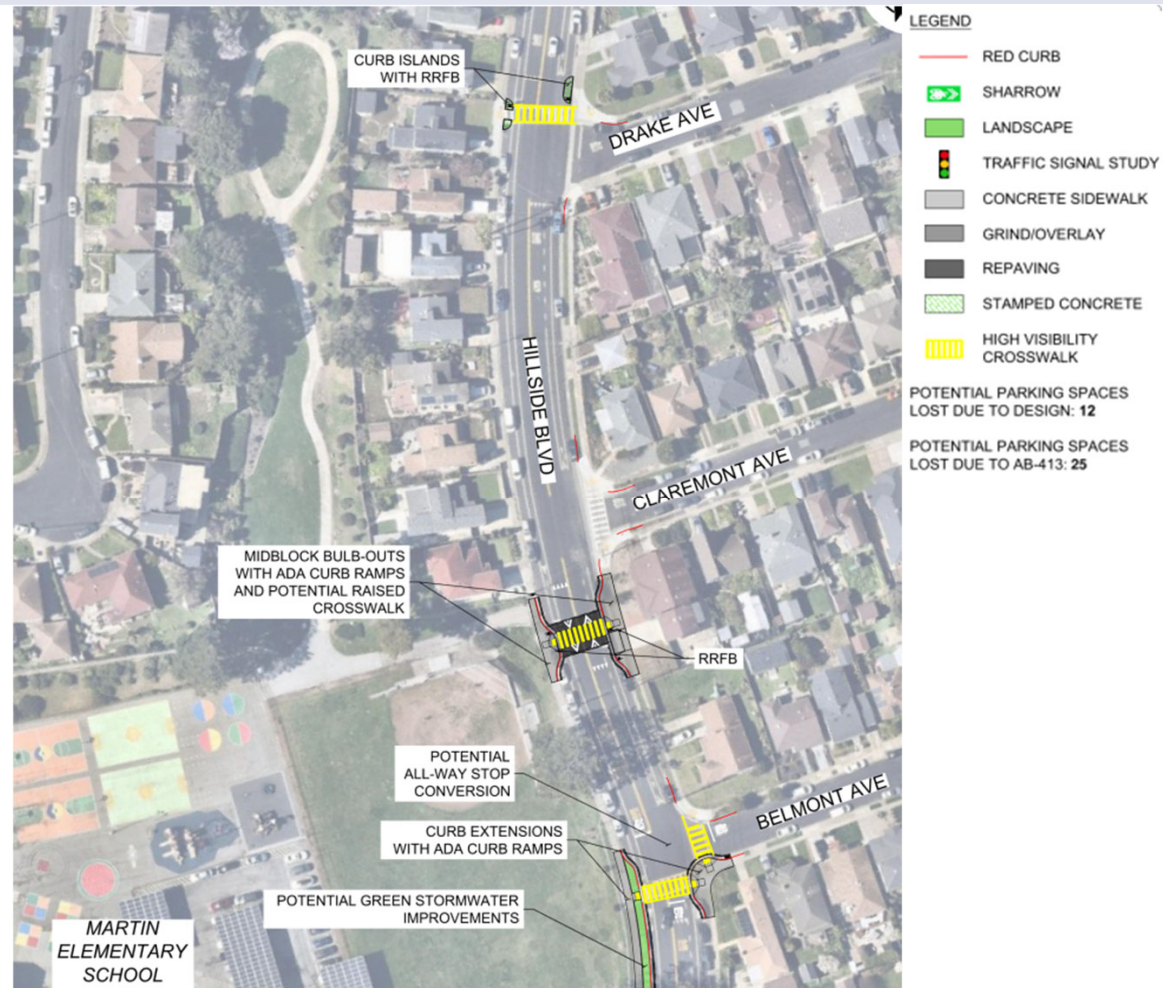


# Draft Design – Hillside Blvd (Spruce Ave – Arden Ave)





# Draft Design – Hillside Blvd (Arden Ave – Drake Ave)





Questions / Discussion

THANK YOU  
FOR JOINING US TODAY



School Traffic Safety **E**nhancement for **E**veryone (S.E.E)  
at School Street  
City of South San Francisco