

# Safe Routes to School 2025

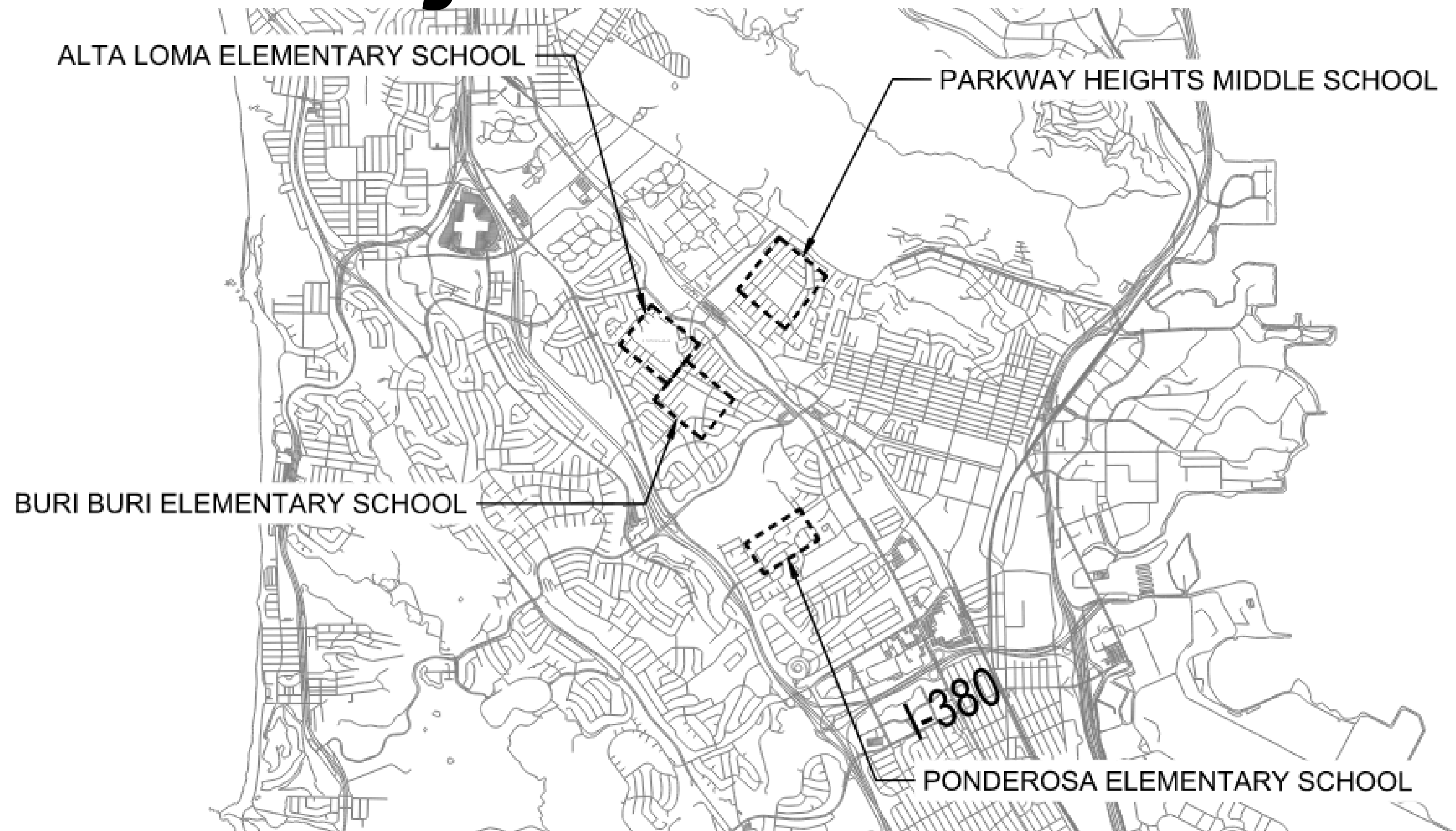
(ST2507)



San Mateo County Office of Education



# Project Overview





# Alta Loma & Buri Buri

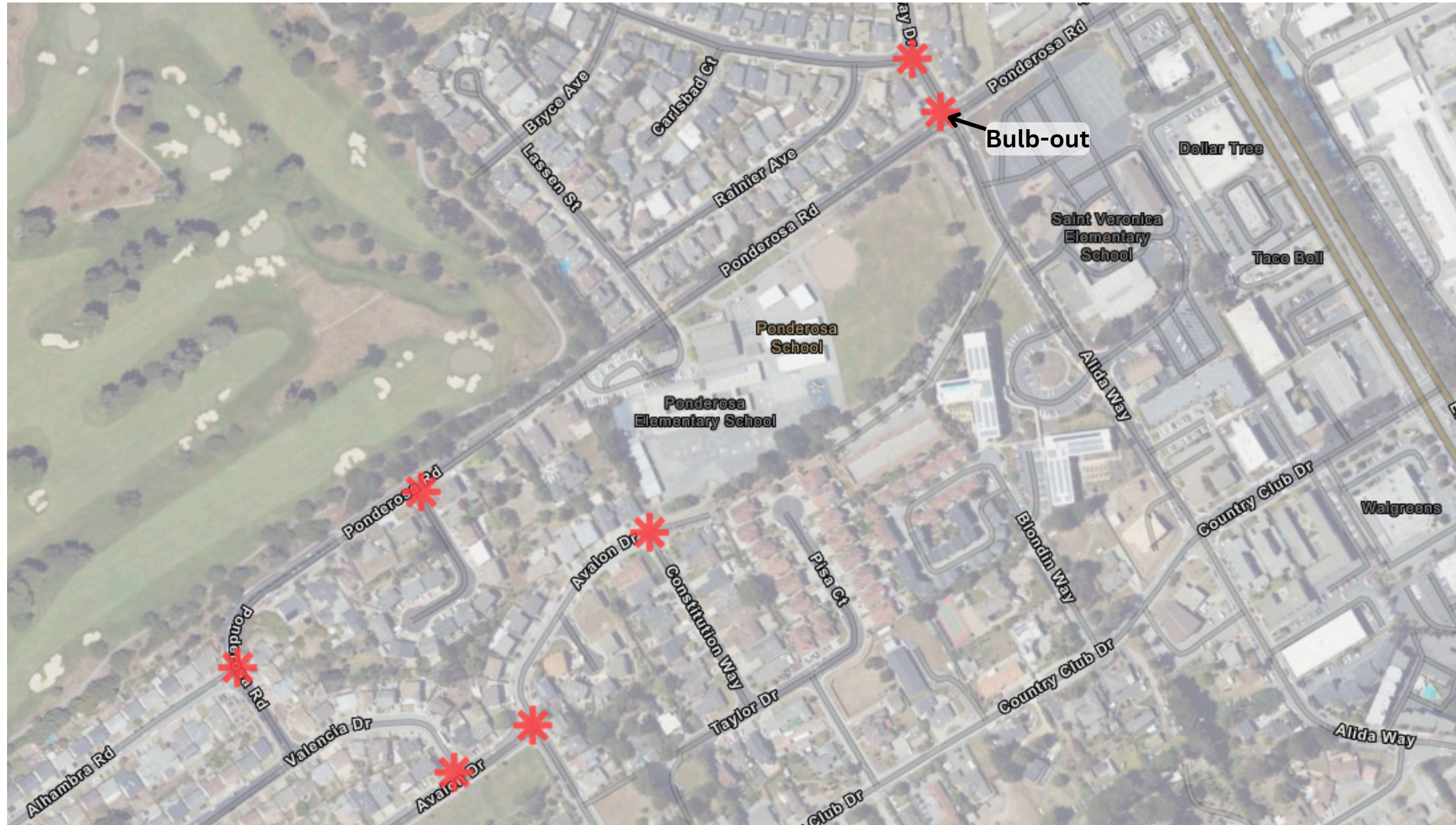








# Ponderosa





# Bulb-outs Curb Extension and Corner Island





# Del Monte: Raised Crosswalk





# Chestnut Bike Path





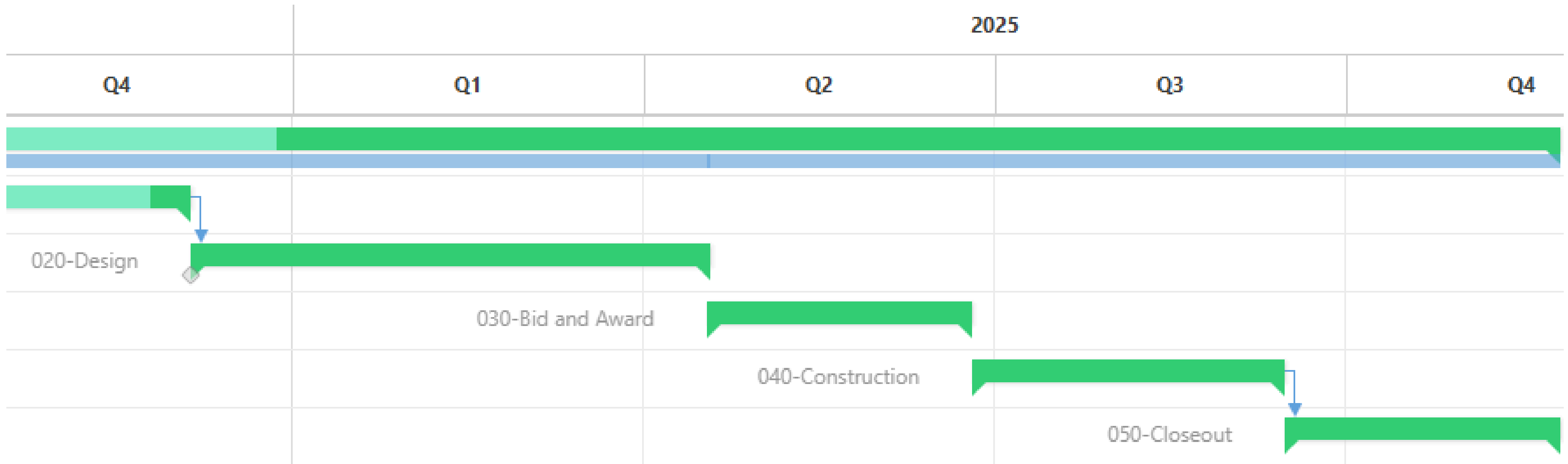
# Del Monte / San Felipe



Neighborhood  
Traffic Circle



# Project Schedule







### **Funding Sources:**

Citywide Traffic Impact Fees \$500,000  
SMCTA Ped/Bike Grant \$4,897,000

### **Expenditures:**

Planning & Design \$675,000  
Construction Engineering \$845,000  
Construction \$3,377,000  
Contingencies \$500,000  
Total Estimated Costs: \$5,397,000

# **Budget Overview**





**Thank You!**

**Questions  
Discussion  
Motion**