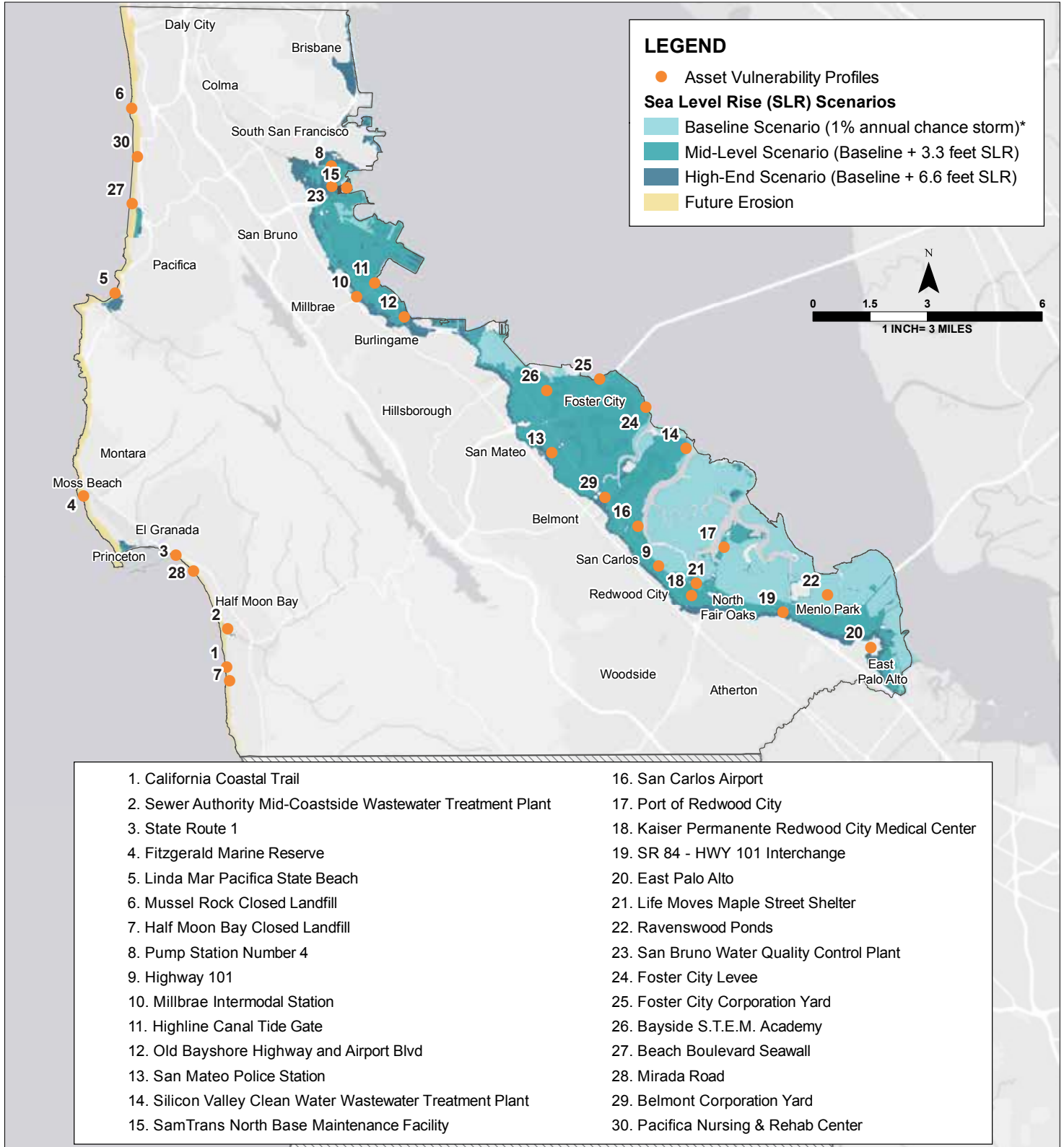


Figure 2.4 Map of 30 Assets



Service Layer Credits: Esri, HERE, DeLorme, MapmyIndia, © OpenStreetMap contributors, and the GIS user community

This map is intended to improve sea level rise awareness and preparedness by providing a regional-scale illustration of inundation and coastal flooding due to specific sea level rise and storm surge scenarios. This map is not detailed to the parcel-scale and should not be used for navigation, permitting, regulatory, or other legal uses.

*1% annual chance storm is a storm that has a 1 in 100 chance of occurring in any given year, and on the Bayside generally results in about a 42 inch increase of total water levels. On the Coastside, the water level increase could be greater due to wave action.

Note on erosion modeling: Erosion modeling used in this study does not consider shoreline armoring due to a lack of information on the condition and life expectancy of existing structures. The 2009 Philip Williams and Associates study recognizes that future shoreline protection is likely in general but could not predict where and how these would appear. In this case, developing predictive erosional models is impractical and exceedingly difficult.