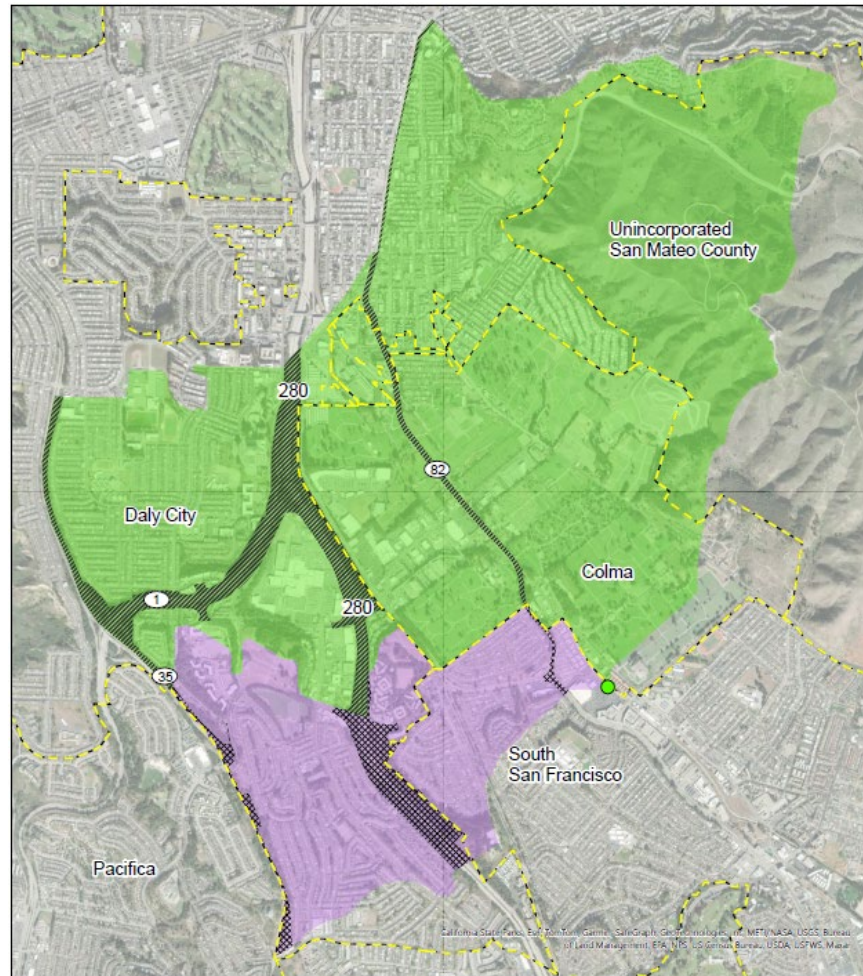


# Colma Creek Trash Capture

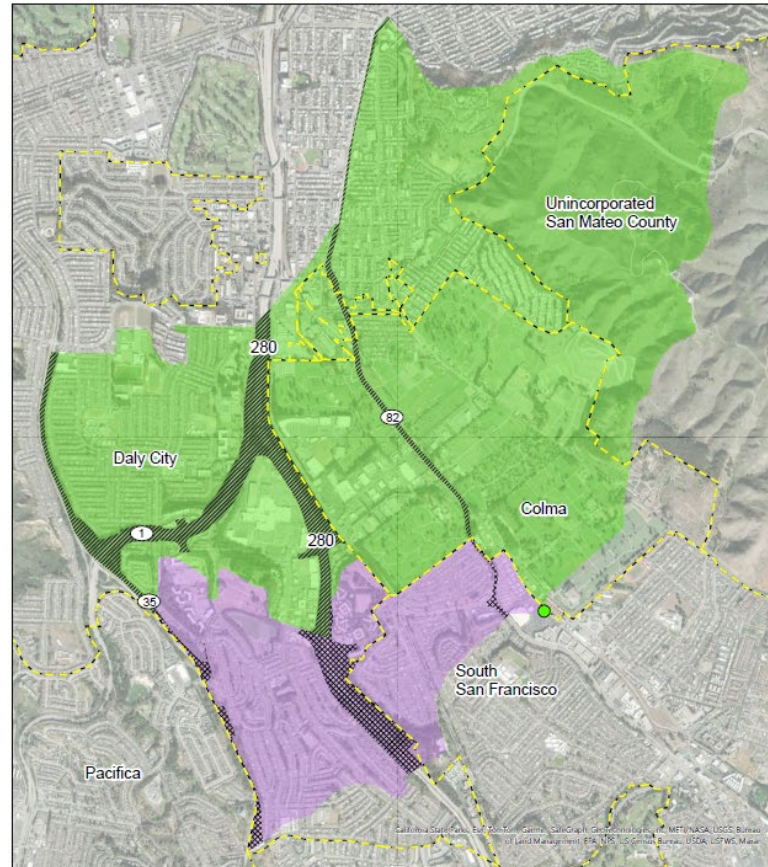
South San Francisco City Council  
December 11, 2024



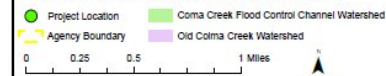
# Background

- San Francisco Regional Water Quality Board MRP 3.0 requires 100% Stormwater Trash Capture by June 2025
- Town of Colma Received \$7.04M grant from Caltrans to construct trash capture system in Colma Creek
- Colma Creek managed by One Shoreline
- Multi-agency project – Colma, Daly City, South San Francisco, San Mateo County, One Shoreline
- Treat approx. 3,377 acres in Colma Creek watershed (trash only) and approx. 793 acres in Old Colma Creek watershed (Trash and sediment) for total area treated of approx. 4,170 acres

# Project Treatment Area



Colma Creek Trash Capture Catchment Areas



Agency	Existing (Acres)	New (Acres)	Total (Acres)
Colma	1053.75	0.20	1053.95
South San Francisco	0.03	249.11	249.14
Daly City	1252.60	462.07	1714.67
CalTrans	193.79	81.97	275.75
Unincorporated	846.19	-	846.19
BART	29.68	-	29.68
<b>Total (Acres):</b>	<b>3376.04</b>	<b>793.35</b>	<b>4169.39</b>

# Design Consultant Scope of Work

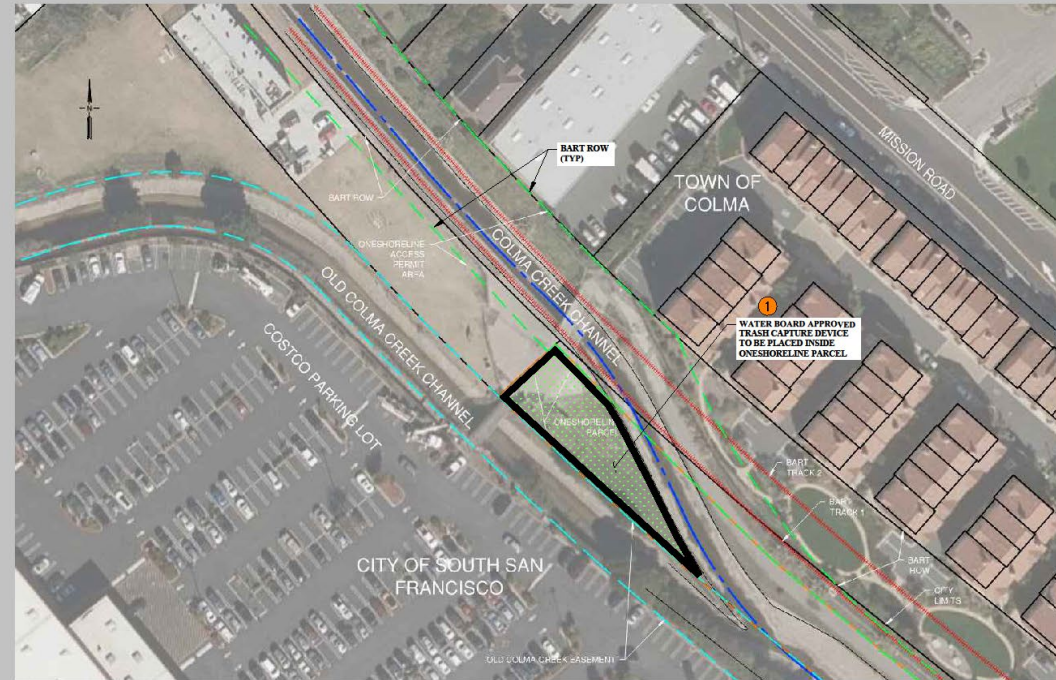
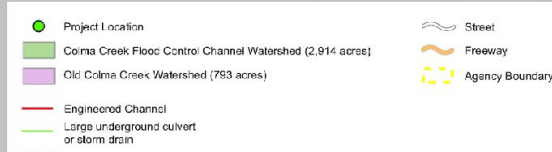
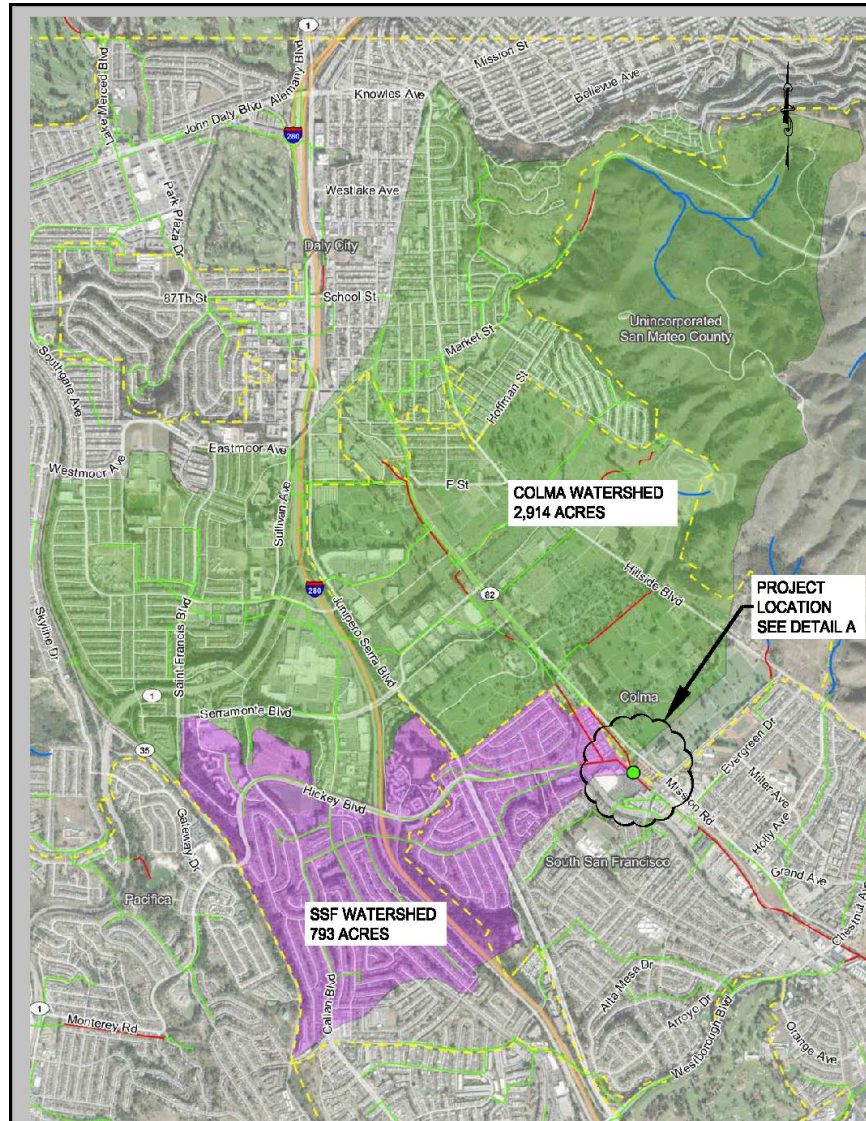
- Evaluate trash capture device options (both watershed) and sediment removal options (Old Colma Creek watershed)
- Perform hydraulic analysis of impacts of installing trash capture and sediment removal devices to channel capacity (hydraulic model of Colma Creek will be provided)
- Evaluate alternatives and expected capital and ongoing maintenance costs
- Recommend preferred alternative
- Perform environmental analysis and clearance (CEQA/NEPA)

# Design Consultant Scope of Work (continued)

- Complete 30%, 60%, 95%, and Bid Package design documents (plans, specifications, and estimates)
- Provide bid period and construction period engineering support



# Project Location



**DETAIL A**

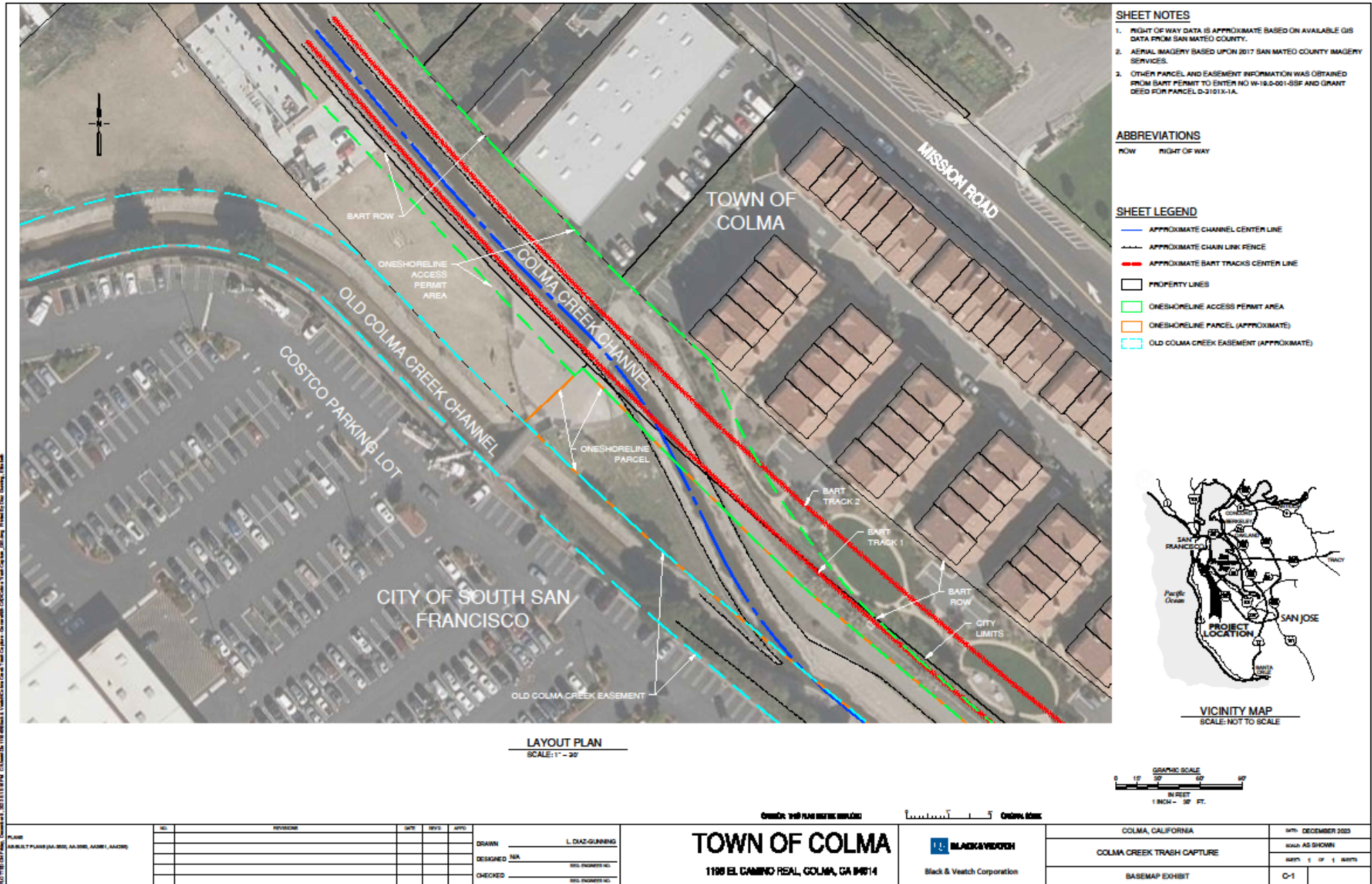
KEY DESIGN ELEMENTS		
No.	DESCRIPTION	DESIGN CONSIDERATIONS
1	TRASH CAPTURE SYSTEM	THE TRASH CAPTURE DEVICE NEEDS CERTIFICATION FROM THE STATE WATER RESOURCES CONTROL BOARD

## ATTACHMENT A COLMA CREEK TRASH CAPTURE DEVICE PROJECT





# Project Location



SHEET NO. 01 OF 01  
 COLMA CREEK TRASH CAPTURE PROJECT  
 PREPARED BY: BLACK & VEATCH CORPORATION  
 DATE: 12/07/2023  
 PROJECT NO.: 23-001-001-SSF  
 SHEET NO.: 01 OF 01  
 SCALE: 1" = 20'  
 DRAWN BY: L. DIAZ-GUNNING  
 CHECKED BY: [REDACTED]  
 DESIGNATED BY: [REDACTED]  
 PROJECT NO.: [REDACTED]

NO.	REVISION	DATE	BY	APPV.

DRAWN: L. DIAZ-GUNNING  
 DESIGNED: [REDACTED]  
 CHECKED: [REDACTED]

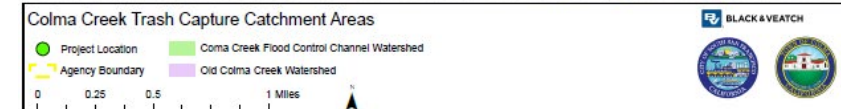
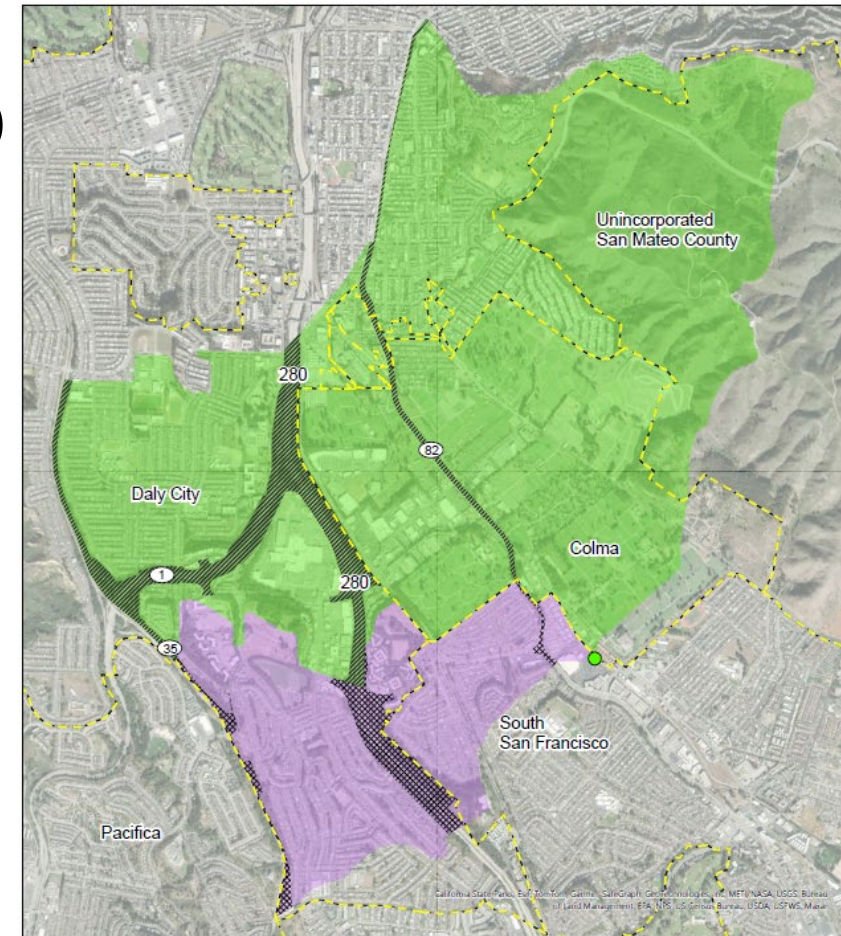
**TOWN OF COLMA**  
 1190 EL CAMINO REAL, COLMA, CA 94014

**BLACK & VEATCH**  
 Black & Veatch Corporation

COLMA, CALIFORNIA	DATE: DECEMBER 2023
COLMA CREEK TRASH CAPTURE	SCALE: AS SHOWN
BASEMAP EXHIBIT	SHEET 1 OF 1 SHEETS

# Benefits to South San Francisco

- Reduce trash and sediment transported to Orange Memorial Park trash capture and infiltration system
- Reduce trash and sediment transported downstream to San Francisco Bay



Agency	Existing (Acres)	New (Acres)	Total (Acres)
Colma	1053.75	0.20	1053.95
South San Francisco	0.03	249.11	249.14
Daly City	1252.60	462.07	1714.67
CalTrans	193.79	81.97	275.75
Unincorporated	846.19	-	846.19
BART	29.68	-	29.68
<b>Total (Acres):</b>	<b>3376.04</b>	<b>793.35</b>	<b>4169.39</b>



# Questions?

