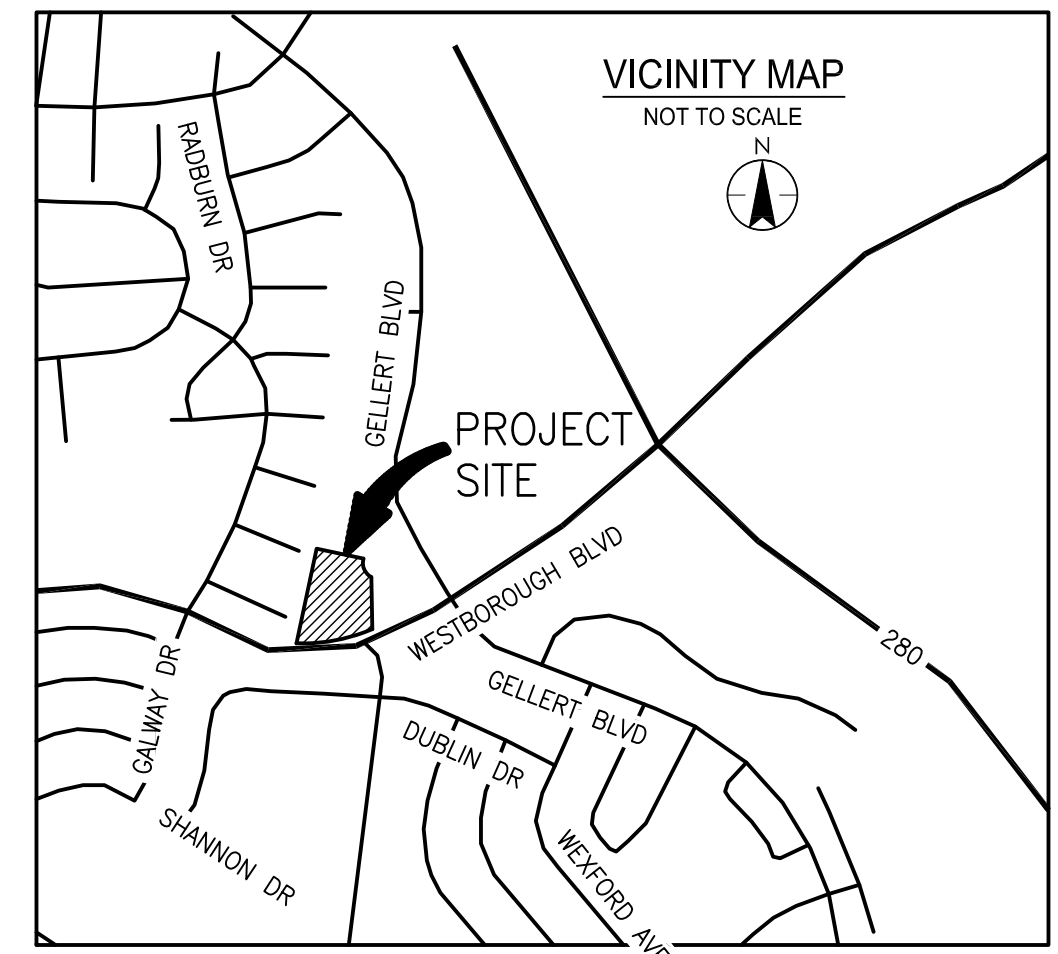
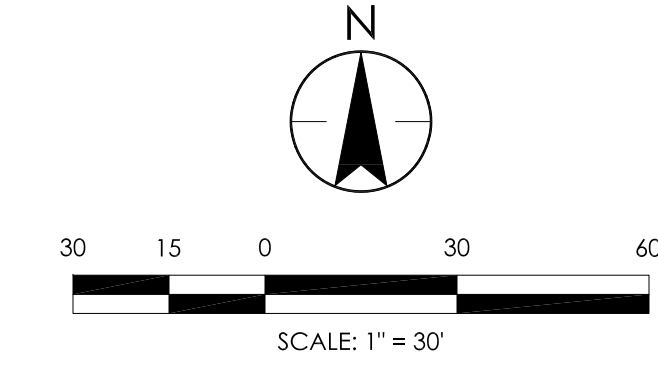
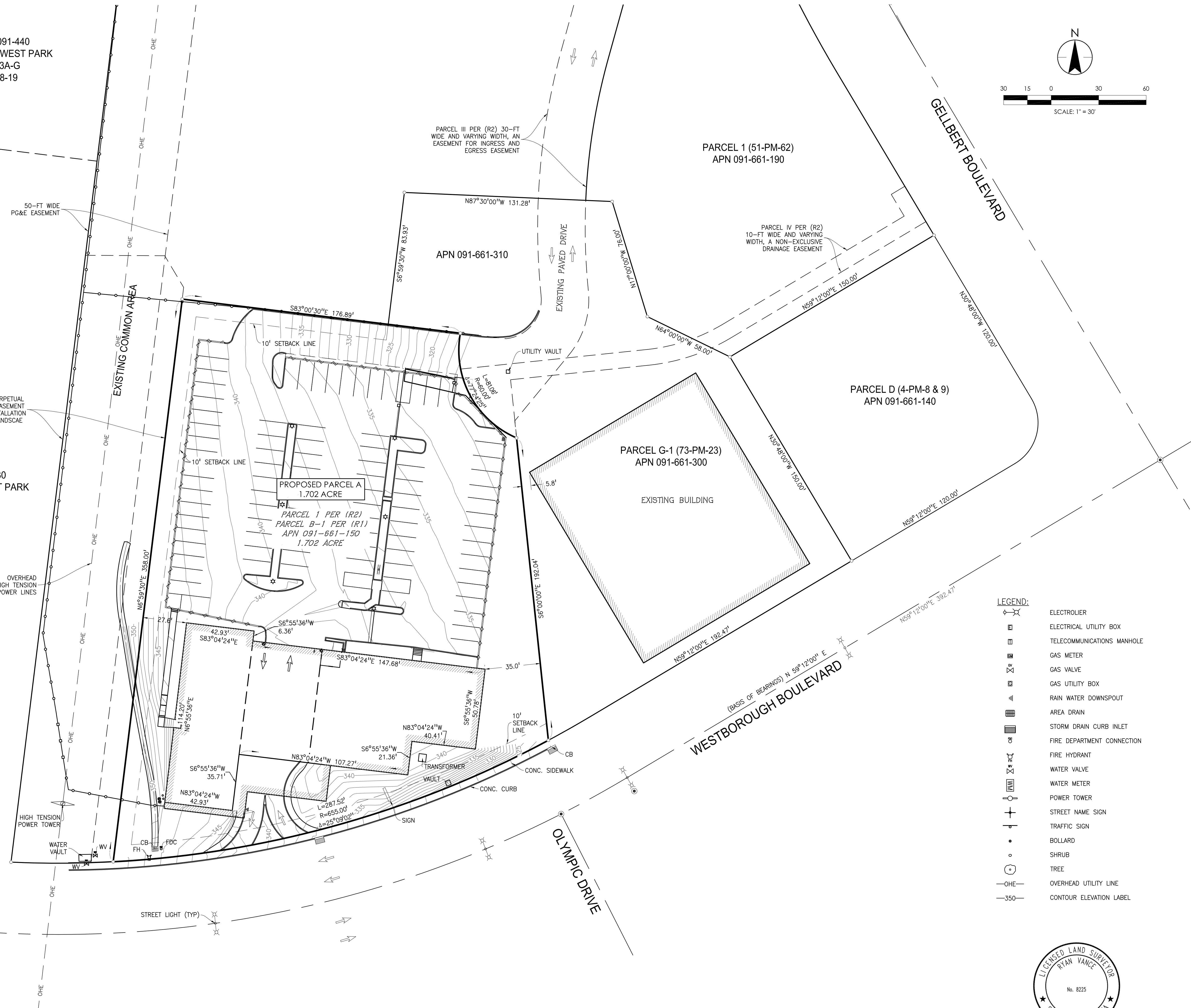


APN PAGE 091-440
WESTBOROUGH WEST PARK
UNIT NO. 3A-G
RSM 71/18-19

APN PAGE 091-430
WESTBOROUGH WEST PARK
UNIT NO. 3A-G
RSM 71/18-19



GENERAL NOTES:

1. ALL BEARINGS AND DISTANCES SHOWN HEREON ARE BASED ON RECORD MAPS.
2. ALL DISTANCES AND DIMENSIONS SHOWN ARE IN FEET AND DECIMAL PARTS THEREOF.
3. ALL RECORD INFORMATION SHOWN IS FROM SAN MATEO COUNTY RECORDS, UNLESS OTHERWISE SHOWN.

PARKING SPACES NOTES:

1. REGULAR PARKING SPACES ON SITE = 85 SPACES
2. HANDICAP PARKING SPACES ON SITE = 9 SPACES
3. TOTAL SPACES = 94 SPACES

LOT SUMMARY NOTES:

1. PROPOSED PARCEL A OF AN AREA 1.702 ACRE FOR CONDOMINIUM PURPOSES, PROJECTED NUMBER OF CONDOMINIUMS = 23

UTILITY SERVICES SUMMARY NOTES:

1. WATER: WESTBOROUGH WATER DISTRICT, 2263 WESTBOROUGH BLVD., S.S.F. CA 94080, PHONE NO. (650) 589-1435
2. SEWERS AND STORMDRAIN: CITY OF SOUTH SAN FRANCISCO, PUBLIC WORKS
3. GAS: PG&E, 2225 FOLSOM ST., SOUTH SAN FRANCISCO CA 94110, PHONE NO. (415) 973-1248
4. ELECTRICITY: PG&E, 2225 FOLSOM ST., SOUTH SAN FRANCISCO CA 94110, PHONE NO. (415) 973-1248
5. TELEPHONE: COMCAST, PHONE NO. (800) 391-3000
6. CABLE T.V.: COMCAST, PHONE NO. (800) 391-3000

REFERENCES:

- (R1) BOOK 25 OF PARCEL MAPS, PAGE 44
- (R2) DOCUMENT NO. 2001-111880 OF OFFICIAL RECORDS.

BASIS OF BEARINGS:

THE BEARING OF N 59°12'00" E FOR THE CENTER LINE OF WESTBOROUGH BOULEVARD AS SHOWN ON BOOK 25 OF PARCEL MAPS, PAGE 44, SAN MATEO COUNTY RECORDS, WAS TAKEN AS THE BASIS OF BEARINGS FOR THIS SURVEY.

SUB-DIVIDER:

BAYSIDE REALTY PARTNERS
1761 LAUREL STREET
SAN CARLO, CA 94070
PHONE NO.:

OWNER:

WESTBOROUGH PROFESSIONAL GROUP, LLC
2400 WESTBOROUGH BLVD.
SOUTH SAN FRANCISCO, CA 94080
PHONE NO.:

VH CONSULTING ENGINEERS:

RYAN VANCE, PLS 8225
430 10TH STREET
MODESTO, CA 95354
PHONE NO.: (209) 568-4477

LEGEND:

- ELECTROLIER
- ELECTRICAL UTILITY BOX
- TELECOMMUNICATIONS MANHOLE
- GAS METER
- GAS VALVE
- GAS UTILITY BOX
- RAIN WATER DOWNSPOUT
- AREA DRAIN
- STORM DRAIN CURB INLET
- FIRE DEPARTMENT CONNECTION
- FIRE HYDRANT
- WATER VALVE
- WATER METER
- POWER TOWER
- STREET NAME SIGN
- TRAFFIC SIGN
- BOLLARD
- SHRUB
- TREE
- OVERHEAD UTILITY LINE
- CONTOUR ELEVATION LABEL

PARCEL MAP NO. _____
2400 WESTBOROUGH BLVD
TENTATIVE PARCEL MAP

BEING A SUBDIVISION OF PARCEL B-1 AS SHOWN ON THE PARCEL MAP 103, FILED IN BOOK 25 OF PARCEL MAPS, AT PAGE 44, CITY SOUTH SAN FRANCISCO, SAN MATEO COUNTY, STATE OF CALIFORNIA

JOB. NO. 1160-0100, DATE: JULY 25, 2018

