



**BOYS & GIRLS CLUBS**  
OF THE PENINSULA

# **South San Francisco City Council Meeting**

# **South San Francisco Clubhouse Project**

September 24, 2025

# BGCP: Who We Are

## OUR VISION

All youth grow up to lead fulfilling lives fueled by their passions, talents, and love of learning

## OUR MISSION

To empower the youth in our community with equitable access to social, academic, and career opportunities to thrive



*SSF Clubhouse Keystone Leadership students enjoying "Chill Time" before jumping into the academic block*



BOYS & GIRLS CLUBS  
OF THE PENINSULA

# Who we serve

2025-2026  
School Year

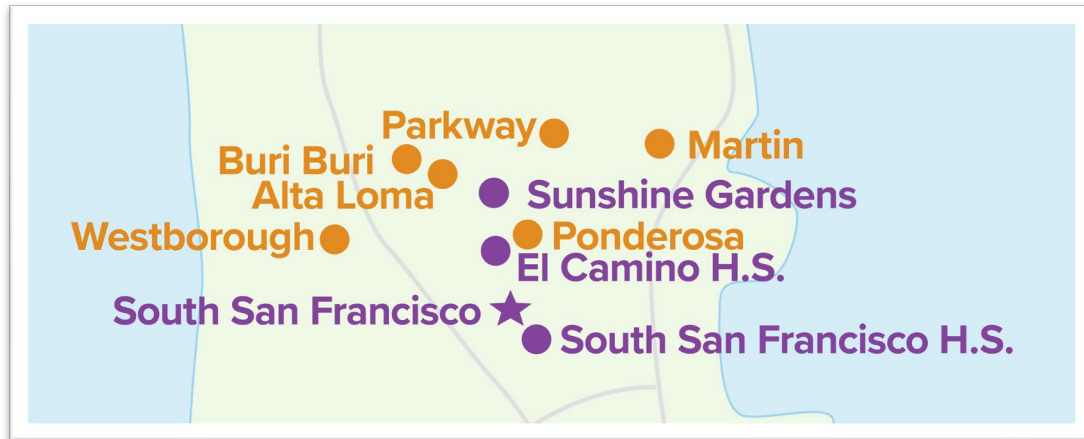
● 26 School Sites

● 4 Clubhouses

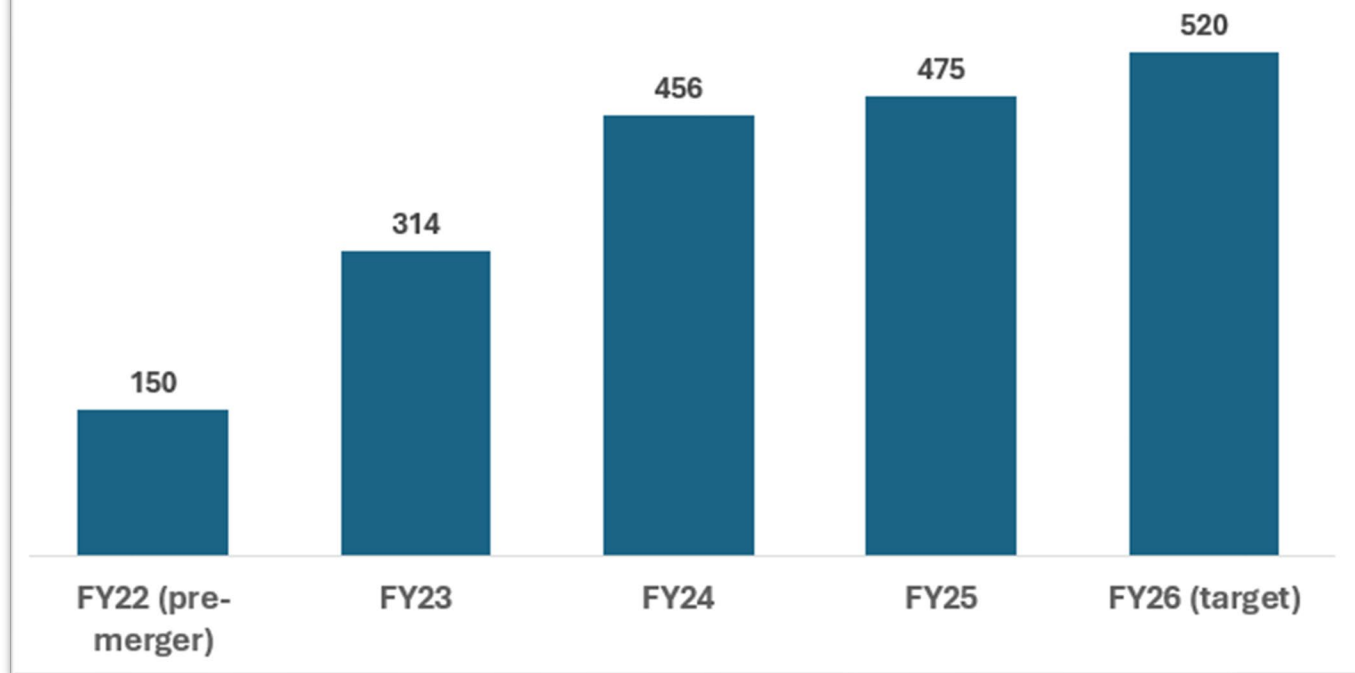
6,700  
Active  
Students



# Zooming in on SSF



Boys & Girls Clubs Students Served  
in South San Francisco





# Clubhouse Programs – All FREE to students and families

- After school
- Full Day Summer Camp
- Warm Meals
- Academic Support
- Mental Health Services
- Enriching Extracurriculars
- Career Pathways Programs



*BGCP athletes celebrating a win!*



# Challenges and Opportunities: Building Capacity and Functionality



*BGCP Future Grads high school seniors celebrating their postsecondary plans*



*A Club Kid taking a "to go" meal*



# Our Vision: A world class community hub for South San Francisco students and families



BOYS & GIRLS CLUBS  
OF THE PENINSULA

# Community Support

- Individuals in the BGCP community have committed **\$27.3M** to make this community hub a reality for the students and families of South San Francisco



*Clubhouse students participating in an Art in Action lesson*



BOYS & GIRLS CLUBS  
OF THE PENINSULA



# Programs will still run during construction!

Our priority is continuity of services for BGCP students and families

840 W Orange Ave (4 min drive, 15 min walk)

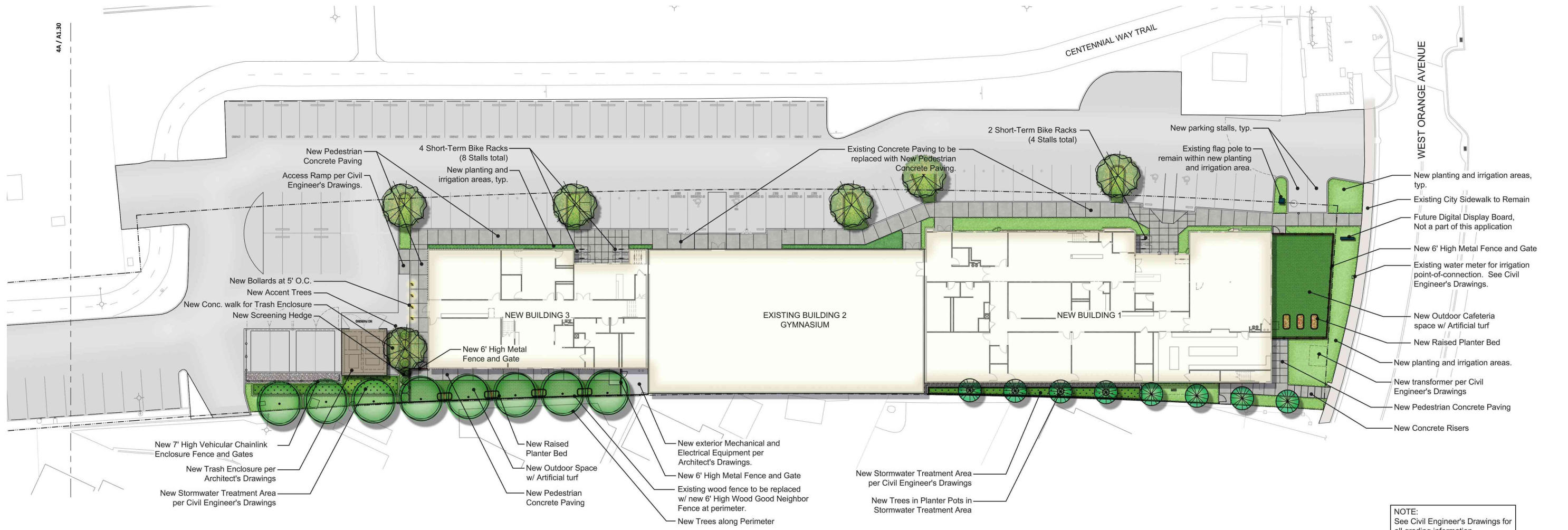


BOYS & GIRLS CLUBS  
OF THE PENINSULA



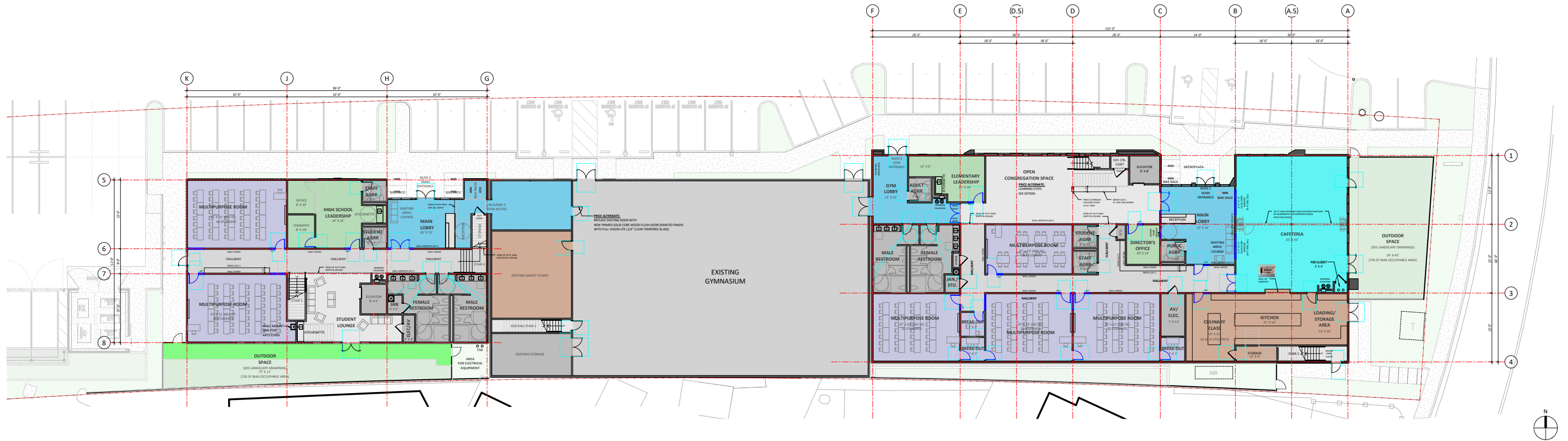


SITE PLAN | EXISTING



SITE PLAN | PROPOSED

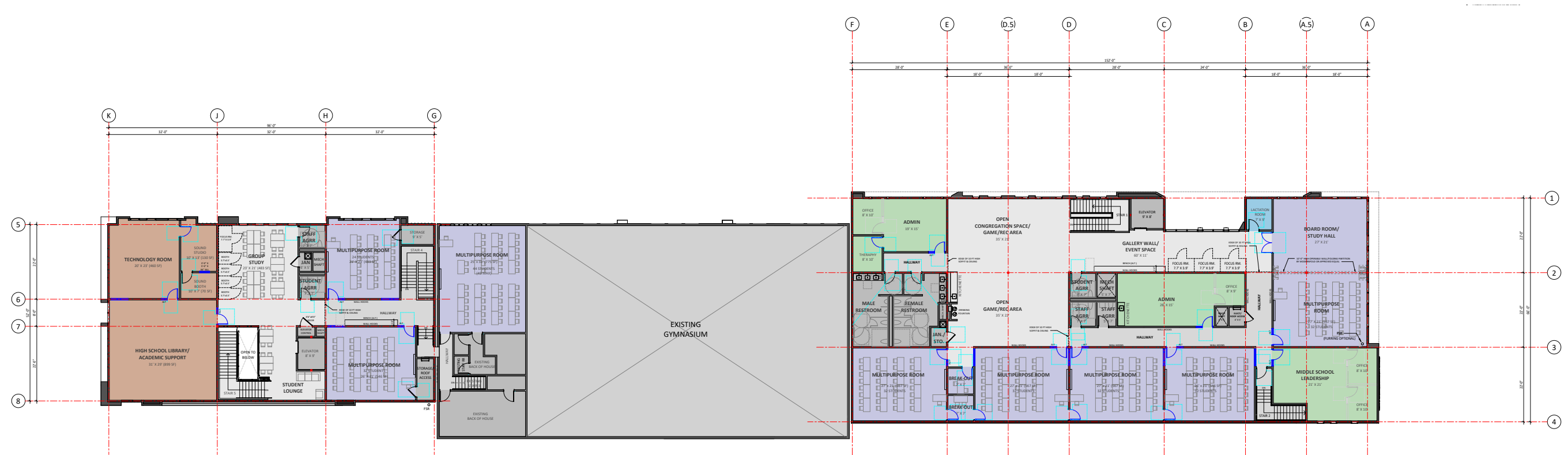




NEW BUILDING 3 - FIRST FLOOR

EXISTING BUILDING 2 - FIRST FLOOR

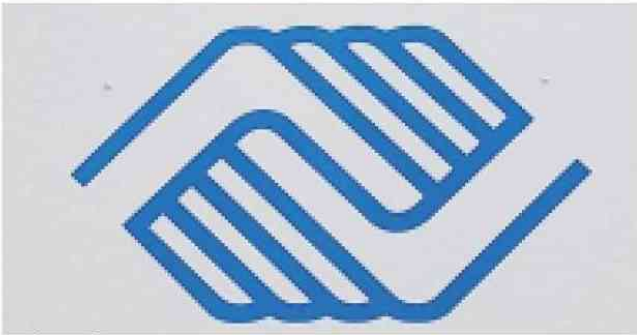
NEW BUILDING 1 - FIRST FLOOR



NEW BUILDING 3 - SECOND FLOOR

EXISTING BUILDING 2 - SECOND FLOOR

NEW BUILDING 1 - SECOND FLOOR



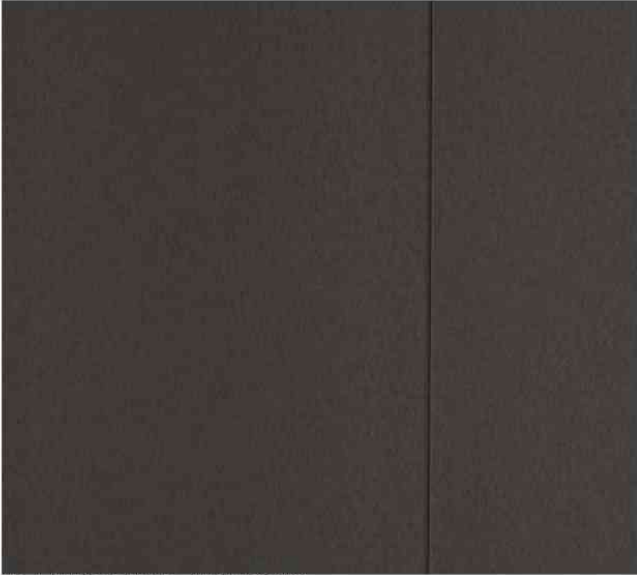
SN |BOYS & GIRLS CLUBS SIGNAGE, BGC BLUE



PL-1 |PORTLAND CEMENT PLASTER, INTEGRAL DARK GREY COLOR



GL-1 |STOREFRONT SYSTEM



HB-1 |HARDIE PANEL, DARK BROWN



PL-2 |PORTLAND CEMENT PLASTER, INTEGRAL OFF-WHITE COLOR



SN|BRUSHED METAL SIGNAGE



SN |BRUSHED METAL SIGNAGE, BLACK



HB-2 |HARDIE PANEL, BLACK



PL-3 |PORTLAND CEMENT PLASTER, INTEGRAL ORANGE COLOR



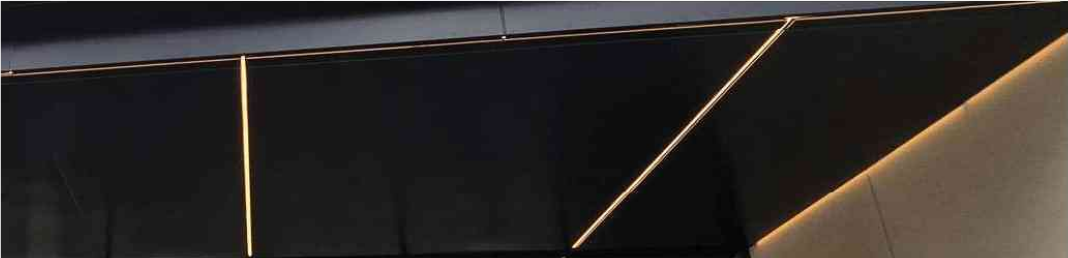
LF-2 |RECESSED LED LIGHT FIXTURE



GL-1 |PUNCHED WINDOW



HB-3|HARDIE PANEL & HARDIE BATTEN, BLACK WITH WOOD GRAIN



GL-1 |THIN RECESSED LED LIGHT STRIP



GL-1 |PUNCHED WINDOW





BUILDING 3 | VIEW OF NORTH FACADE





BUILDING 1 | VIEW FROM MEMORIAL DRIVE





BUILDING 1 | VIEW FROM ORANGE AVENUE



# Q&A

