



FY 2026-27

Proposed Sewer Rate Plan

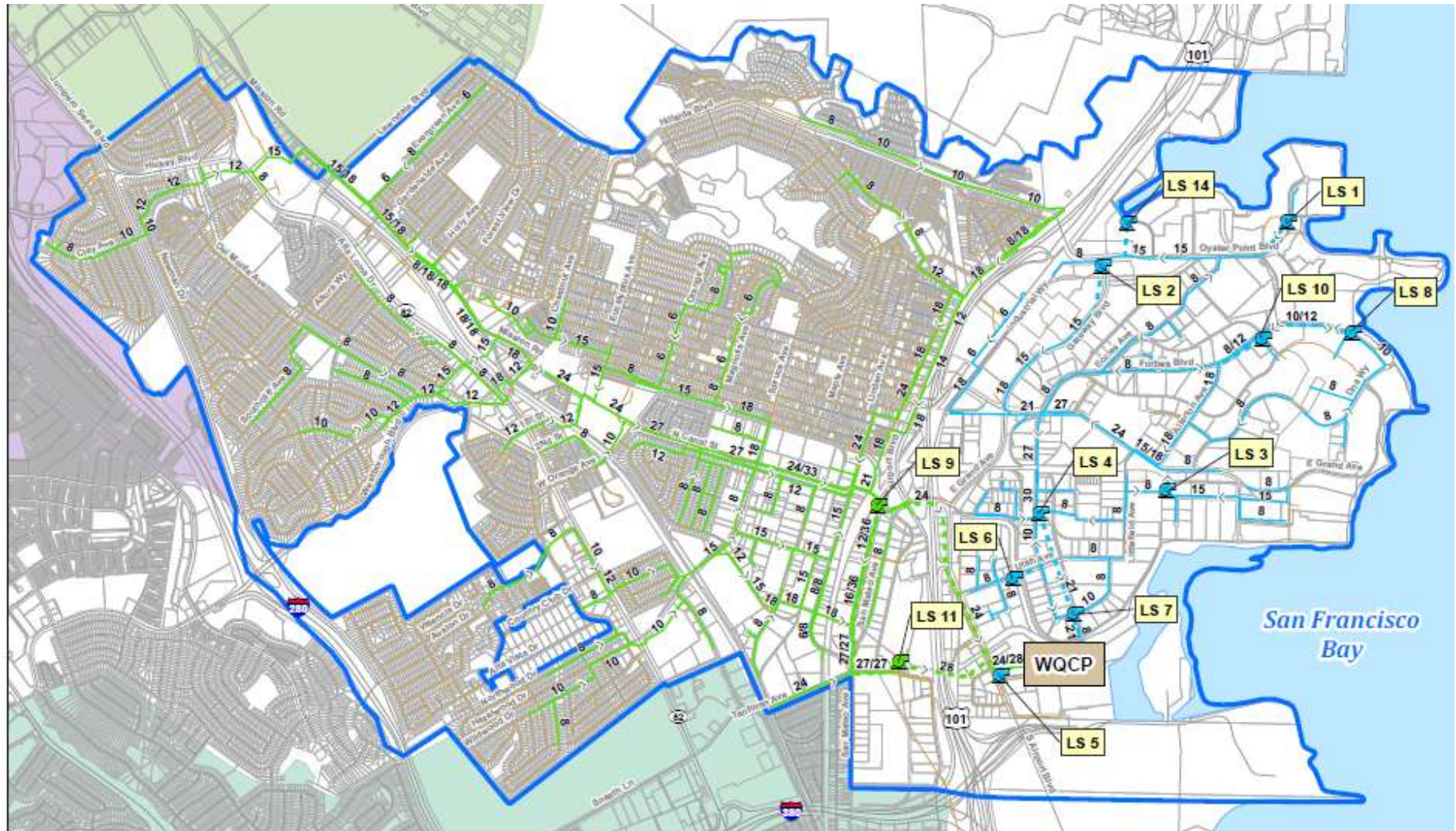
City Council Meeting
June 10, 2026

Presentation Overview

- Sewer Fund Background
- Sewer Rate Plan
- Infrastructure Investments
- Council Questions and Discussion

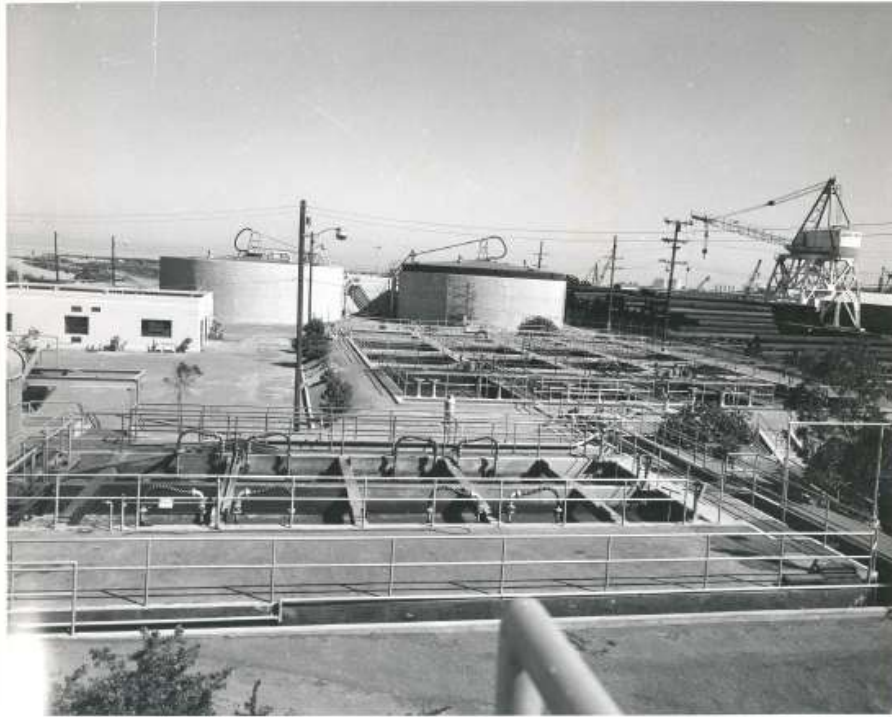


Sewage Collection System



165 Miles of Sewer Line Connecting All of South San Francisco including 13 Major Sewage Pumping Stations

Wastewater Treatment Plant

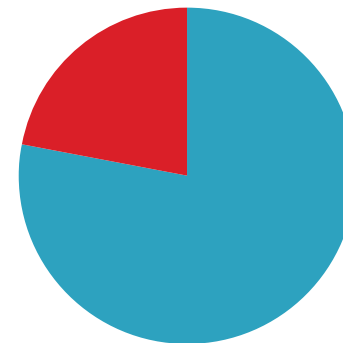


1952



Current

South San Francisco -
San Bruno Partnership



■ SSF
■ SB

Sewer Rate Plan

	<u>FY 2022-23</u>	<u>FY 2023-24</u>	<u>FY 2024-25</u>	<u>FY 2025-26</u>	<u>FY 2026-27</u>
Single Unit Residential	\$768 per EDU (2% Increase)	\$791 per EDU (3% Increase)	\$815 per EDU (3% Increase)	\$839 per EDU (3% Increase)	\$864 per EDU (3% Increase)
Multi-Unit/Trailer Residential	\$691 per EDU (2% Increase)	\$712 per EDU (3% Increase)	\$734 per EDU (3% Increase)	\$755 per EDU (3% Increase)	\$778 per EDU (3% Increase)
Commercial*	(2% Increase)	(3% Increase)	(3% Increase)	(3% Increase)	(3% Increase)

*Minimum commercial rate is tied to Single Unit Residential

Keeping Rates Low

Low-interest CWSRF funding resulting in a lower interest rate on debt service; and

\$4 million in principal forgiveness

The CWSRF targets critical green infrastructure, energy efficiency improvements, and other environmentally innovative projects.

Impact Fee offset

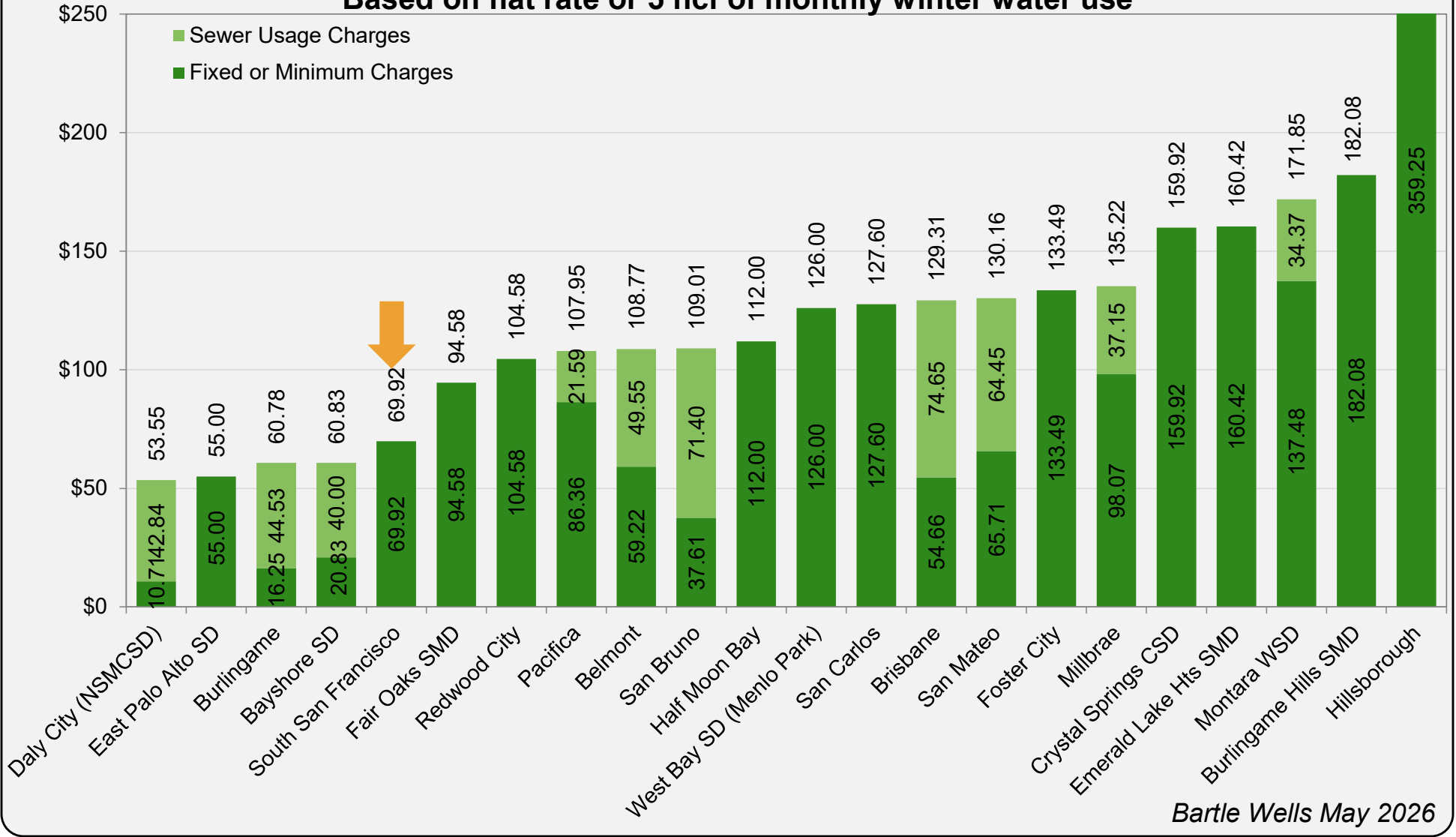
Impact fees paid by Developers offset rates by \$16.5 million



San Mateo County Sewer Rates

Single Family Residential Monthly Sewer Rates

Based on flat rate or 5 hcf of monthly winter water use



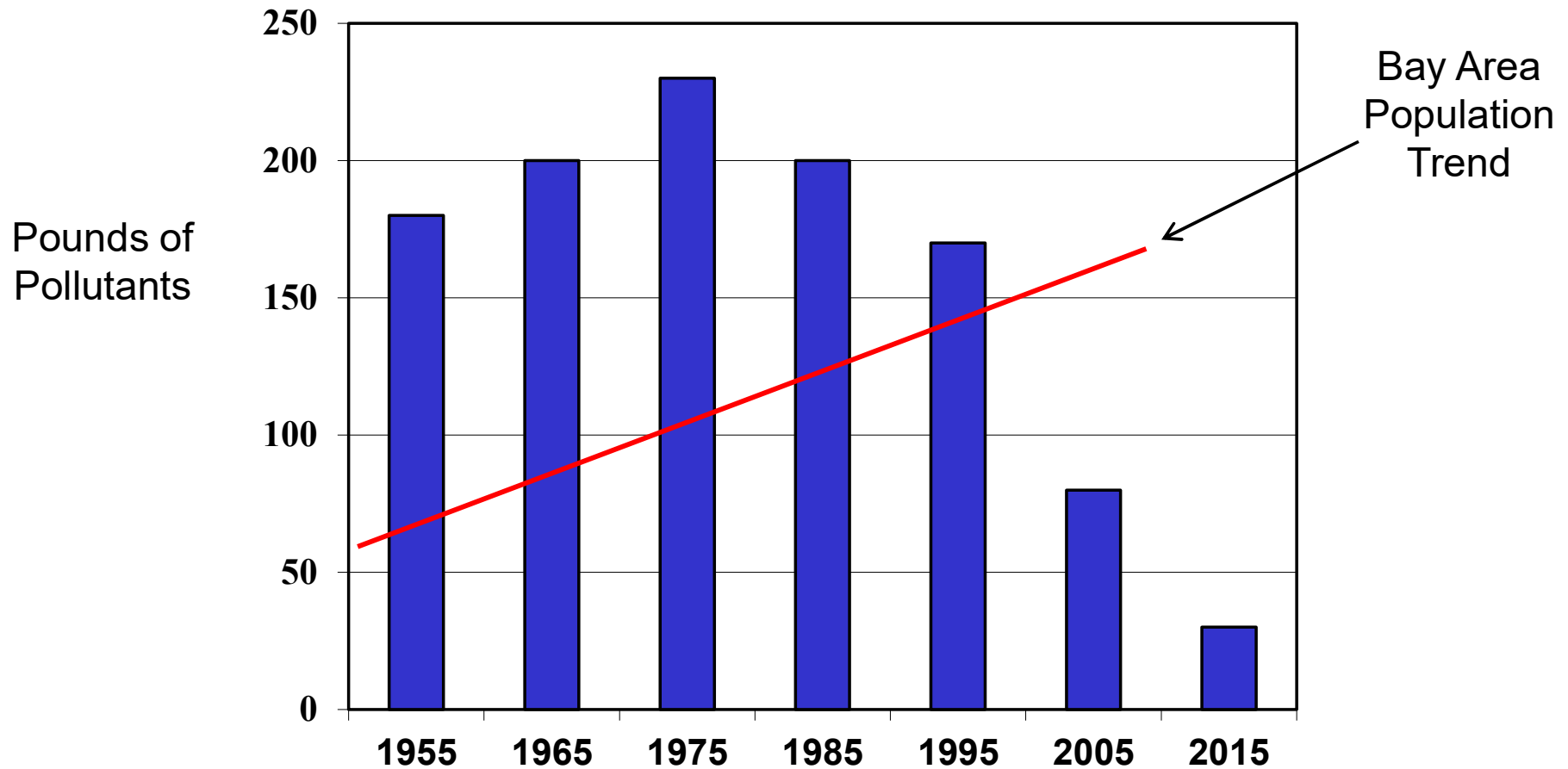
Bartle Wells May 2026

The City's residential sewer rates remain among the lowest in San Mateo County

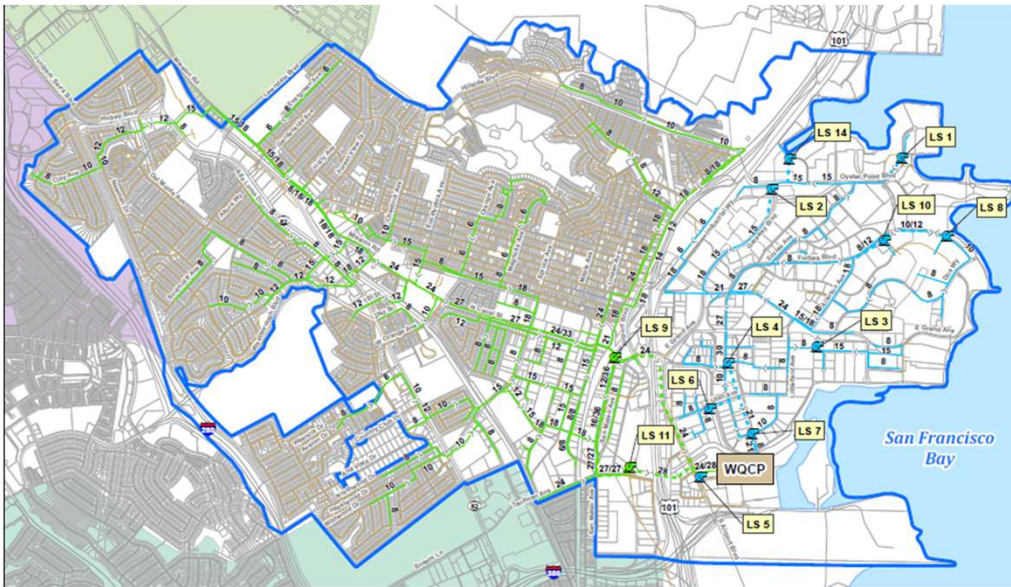
Future Infrastructure Investments and Regulatory Mandates



San Francisco Bay



Loadings of Pollutants to the Bay from Sewage treatment Plants vs Population



Questions and Discussion