

# City of South San Francisco



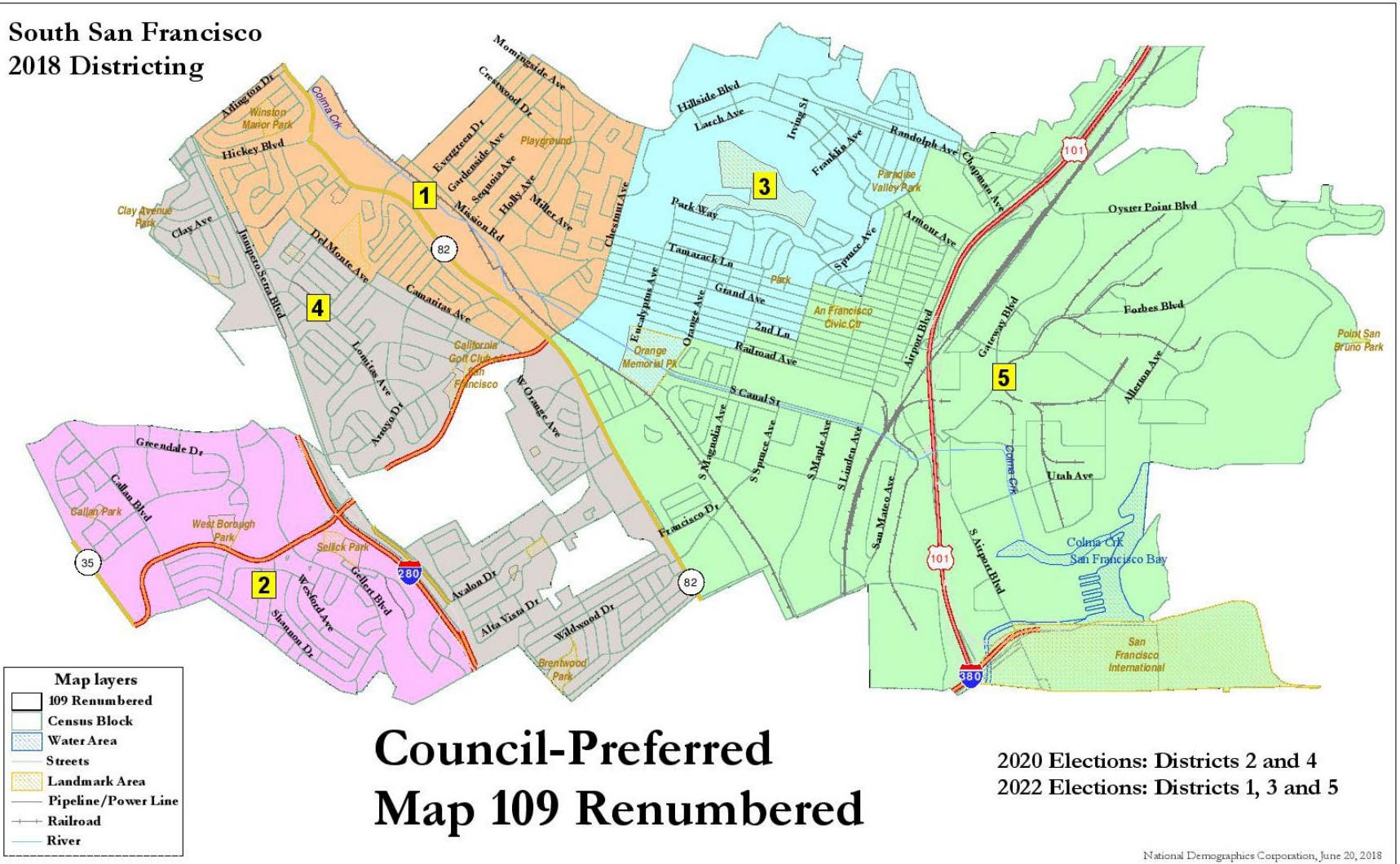
## Introduction to Redistricting

# Districting vs. Redistricting

Date	Event
March 6, 2018	City received letter claiming violation of the <a href="#">California Voting Rights Act</a> (CVRA) because Council members were elected at-large rather than by districts
April 11, 2018	Council passed resolution to change to district elections
July 11, 2018	Council passed ordinance approving new district boundaries
2020	First by-district elections in two districts
<b>2021</b>	<b>Districts will be redrawn to reflect 2020 Census data</b>
2022	First by-district elections in remaining three districts

# Current District Map (2018)

South San Francisco  
2018 Districting





# 2021 Redistricting Timeline

Date	Actions
June	Project planning
July/August	1 - 2 public hearings on “communities of interest”
Mid-August 2021	Expected release of 2020 Census data
End of September 2021	Expected release of California adjusted data
October – December 2021	Time for public to draw draft maps
January - March 2022	At least 2 public hearings to discuss and revise the draft maps
April 17, 2022	Statutory deadline to adopt map (E-205)
November 8, 2022	First election with new map

# Redistricting Rules and Goals

## 1. Federal Laws

- Equal population
- Federal Voting Rights Act
- No racial gerrymandering



## 2. California's Ranked Criteria

- 1. Geographic contiguity**
- 2. Undivided neighborhoods and “communities of interest”**
- 3. Easily identifiable boundaries**
- 4. Compactness**  
(Do not bypass one group of people to get to a more distant group of people)

### *Prohibited:*

*“Shall not favor or discriminate against a political party.”*

## 3. Other Goals & Traditional Principles

- Minimize voters shifted to different election years
- Respect voters' choices / continuity in office
- Future population growth
- Preserving the core of existing districts

# Beyond Neighborhoods: Defining “Communities of Interest”

## 1<sup>st</sup> Question: what defines your community?

- Geographic area, plus
- Shared issue or characteristic
  - *Shared social or economic interest*
  - *Impacted by city policies*
- Tell us “your community’s story”

## 2<sup>nd</sup> Question:

Would this community benefit from being “included within a single district for purposes of its effective and fair representation”?

- Or would it benefit more from having multiple representatives?

*Definitions of Communities of Interest may not include relationships with political parties, incumbents, or political candidates*

# Demographic Summary of Existing Districts

Estimates using official  
2020 demographic data  
and NDC's estimated  
total population figures.

Each of the 5 districts  
must contain about  
13,500 people.

## South San Francisco - Current Districts

District		1	2	3	4	5	Total
<b>2020</b>	2020 Est. Total Pop	13,100	13,504	14,278	14,124	12,531	67,538
	Deviation from ideal	-407	-4	770	617	-976	1,746
	% Deviation	-3.01%	-0.03%	5.70%	4.57%	-7.23%	12.93%
2010 Total Pop	% Hisp	31%	10%	42%	26%	62%	34%
	% NH White	24%	13%	22%	37%	13%	22%
	% NH Black	3%	4%	2%	2%	2%	3%
	% Asian-American	38%	69%	30%	31%	18%	37%
Citizen Voting Age Pop	Total	9,541	9,767	9,936	10,985	6,894	47,122
	% Hisp	25%	10%	39%	23%	48%	28%
	% NH White	30%	13%	23%	38%	15%	25%
	% NH Black	1%	5%	2%	2%	5%	3%
	% Asian/Pac.Isl.	42%	70%	35%	37%	32%	44%
Immigration	immigrants	35%	52%	40%	32%	42%	40%
	naturalized	72%	77%	69%	79%	56%	71%
Language spoken at home	english	53%	37%	39%	56%	30%	43%
	spanish	18%	8%	34%	12%	48%	23%
	asian-lang	25%	48%	22%	23%	16%	27%
	other lang	4%	7%	5%	9%	5%	6%
Education (among those age 25+)	hs-grad	41%	33%	42%	45%	48%	42%
	bachelor	29%	34%	25%	26%	16%	26%
	graduatedegree	11%	12%	8%	10%	6%	9%
Child in Household	child-under18	26%	31%	33%	28%	42%	32%
Housing Stats	single family	63%	72%	69%	81%	59%	69%
	multi-family	37%	28%	31%	19%	41%	31%
	rented	41%	21%	46%	32%	57%	39%
	owned	59%	79%	54%	68%	43%	61%

Total population data from the 2010 Decennial Census. Surname-based Voter Registration and Turnout data from the California Statewide Database. Latino voter registration and turnout data are Spanish-surname counts adjusted using Census Population Department undercount estimates. NH White and NH Black registration and turnout counts estimated by NDC. Citizen Voting Age Pop., Age, Immigration, and other demographics from the 2014-2018 American Community Survey and Special Tabulation 5-year data.

# Commission Options

## 1. Advisory

- Develops a map or maps that the Council adopts or revises
- Initial startup takes 4+ weeks, can be longer
- Adds a minimum of 2 weeks to the schedule

## 2. Independent

- Adopts a map with no Council review
- Initial startup takes 6 - 8 weeks
- Roughly the same timeline as a Council-controlled process

## 3. Hybrid

- Develops two maps and the Council must adopt one or the other
- Initial startup takes 6 - 8 weeks
- Adds a minimum of 2 weeks to the schedule



# Legal Requirements

## Elections Code Section 23000

### ▶ **Advisory Commission:**

- Appointed by Council
- No elected officials, family members or paid campaign staff
- No extra mapping criteria

### ▶ **Independent or Hybrid Commission:**

- Council sets appointment process, but may not directly appoint
- Extensive restrictions on commission member qualifications
- Additional mapping criteria: “*shall not draw districts for the purpose of favoring or discriminating against a political party or an incumbent or political candidate*”

# Public Mapping & Map Review Tools

### City of South San Francisco, 2018 Districting

#### Population Units with total population counts

From wish to derive a Population Plan, I copy down an entire to the open end and use the same of the since you wish me to make the split. NDC will show that split and calculate the resulting population figures when we process the map.

For a five-district map, each district should be as close to 12,236 as possible, and the largest should be a maximum of 1,233 larger than the smallest.

For a four-district map, each district should be as close to 16,938 as possible, and the largest should be a maximum of 1,694 larger than the smallest.

When finalized, please submit your map to the City Clerk, or scan and email it, or take a photo and email that to Districting@cityofsouthsanfrancisco.com

Your contact information (optional):  
 Name: \_\_\_\_\_  
 Phone: \_\_\_\_\_  
 E-Mail: \_\_\_\_\_

Map Layers:  
 - Landmarks/Street  
 - Water Area  
 - Physical/Topo Line  
 - Railroad  
 - Road  
 - City Limits  
 - City Population

### Los Alamitos USD Districting 2019

### Maptitude Online Redistricting

Plan Manager | Plan Settings | Reports | Plan Integrity | Find | View | Print Map | Email Plan | Share Plan | Submit Plan | Help | Contact Us | Log Out

4 Districts - newcitynj

www.colipar.com Sun Apr 28 14:56:58 2018

Redistricting Tooltips - 4 Districts

Target: New District

Source: All

Solution: Census Block

Pending Changes (None)

District	Population	Change - Population	Ideal Value	Deviation	% Deviation	[Hispanic Origin]	Change - [Hispanic Origin]	% [Hispanic Origin]	MI_WHI	% MI_WHI	NI_DOL_DM	Change - NI_WHI
1	63,602	47,724	300.0%	21,345	34.0%	14,116	22.0%	1,524				

Map Legend

Theme: None | Redraw/Map

Quick Reference: Total Population & Deviation from Ideal by district																									
D1:	D2:	D3:	D4:	D5:																					
11,483	-93	11,733	157	11,680	104	11,377	-199	11,606	30																

Sums by District Assigned		Ideal population:	
District	Sum	11,576	
1	11,483		
2	11,733		
3	11,680		
4	11,377		
5	11,606		

enter your name here

Group	Category	Counts					Unassigned	Total	Percentages					
		1	2	3	4	5			1	2	3	4	5	
Total	Tot. Pop.	11,483	11,733	11,680	11,377	11,606	0	37,879						
Total	Deviation from	-93	157	104	-199	30	0	356	-1%	1%	1%	-2%	0%	
Total	Hispanic	3,195	2,268	4,771	7,604	7,413	0	32,231	28%	62%	58%	67%	64%	
Total	NI_WHI	6,132	3,013	4,012	3,089	3,350	0	19,566	53%	26%	34%	27%	29%	
Total	NI_BB	279	261	152	151	114	0	917	2%	2%	1%	1%	1%	
Total	NI_ASI	1,659	939	397	461	556	0	4,252	12%	8%	5%	4%	5%	
Total	Total CVAP	9,222	7,758	7,167	6,278	6,685	0	37,210						
Citizen Voting	Hispanic	1,980	4,115	4,061	3,575	3,087	0	16,818	21%	53%	57%	57%	48%	
Citizen Voting	NI_WHI	3,860	2,664	2,602	2,330	2,914	0	16,371	63%	34%	36%	37%	44%	
Citizen Voting	NI_BB	272	161	142	117	47	0	1,425	3%	2%	2%	2%	1%	
Citizen Voting	NI_ASI	1,039	75	266	234	433	0	2,758	11%	10%	4%	4%	6%	
Total Reg.	Total Reg.	8,437	5,317	6,027	4,932	4,526	0	29,239						
Non 2018	Latino	2,046	2,681	2,304	2,380	2,161	0	11,771	34%	50%	42%	48%	40%	
Non 2018	Asian-Americans	992	284	212	172	165	0	1,425	7%	5%	4%	3%	4%	
Non 2018	Other	5,799	3,332	3,511	2,381	2,200	0	16,043	69%	44%	55%	48%	55%	
Total Votes	Total Votes	6,182	3,428	4,058	3,163	2,896	0	19,739						
Non 2018	Latino	1,409	1,563	1,500	1,347	1,162	0	6,980	23%	46%	37%	43%	40%	
Non 2018	Asian-Americans	350	166	141	107	94	0	1,128	6%	5%	3%	3%	4%	
Non 2018	Other	4,424	1,699	2,417	1,711	1,640	0	11,922	72%	50%	60%	54%	60%	

Submitter's Comments about the plan:

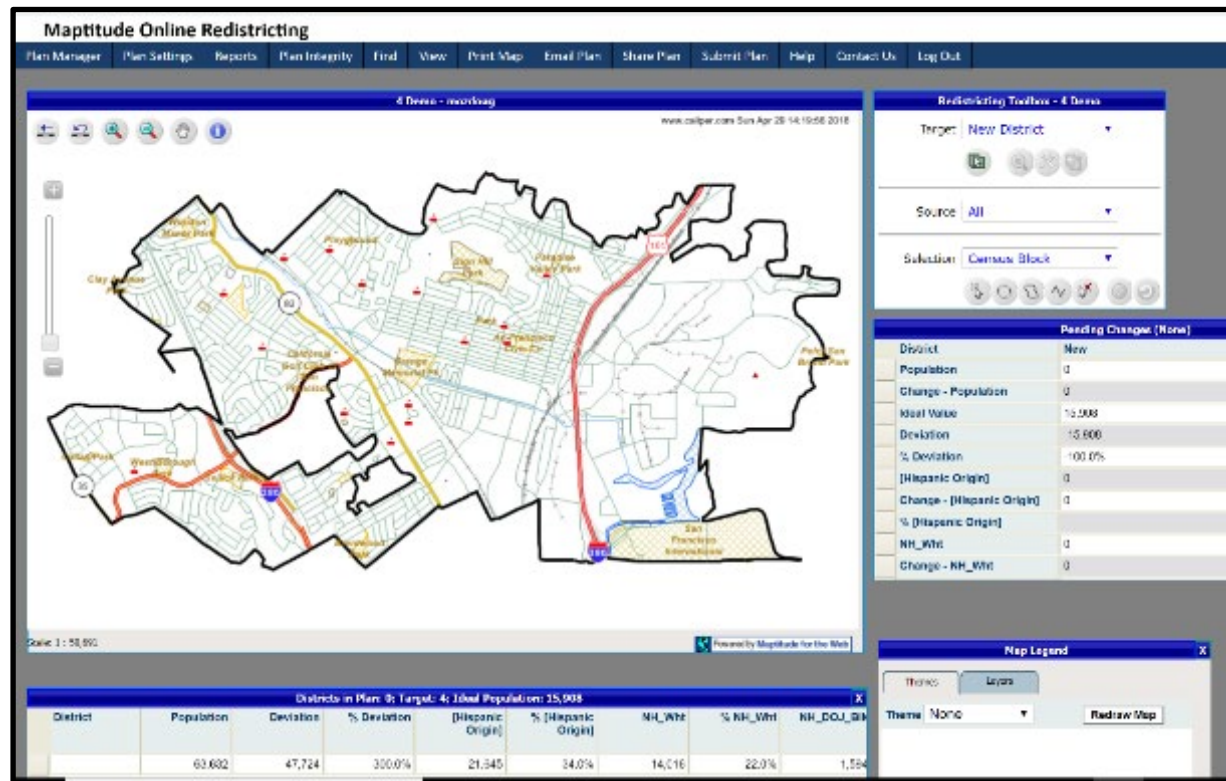
I think this map makes sense because...

These tools are designed as ways to empower residents. There is no requirement to use them.

# Caliper's "Maptitude Online Redistricting"

## Powerful Online Mapping Tool

- ▶ Popular, data-rich online tool
- ▶ Six language options: English, Spanish, Portuguese, Vietnamese, Mandarin and Korean



# Next Steps

- Decide whether to form a commission
- Decide whether to use a public mapping tool
- Develop plan for public outreach
- Create redistricting website