



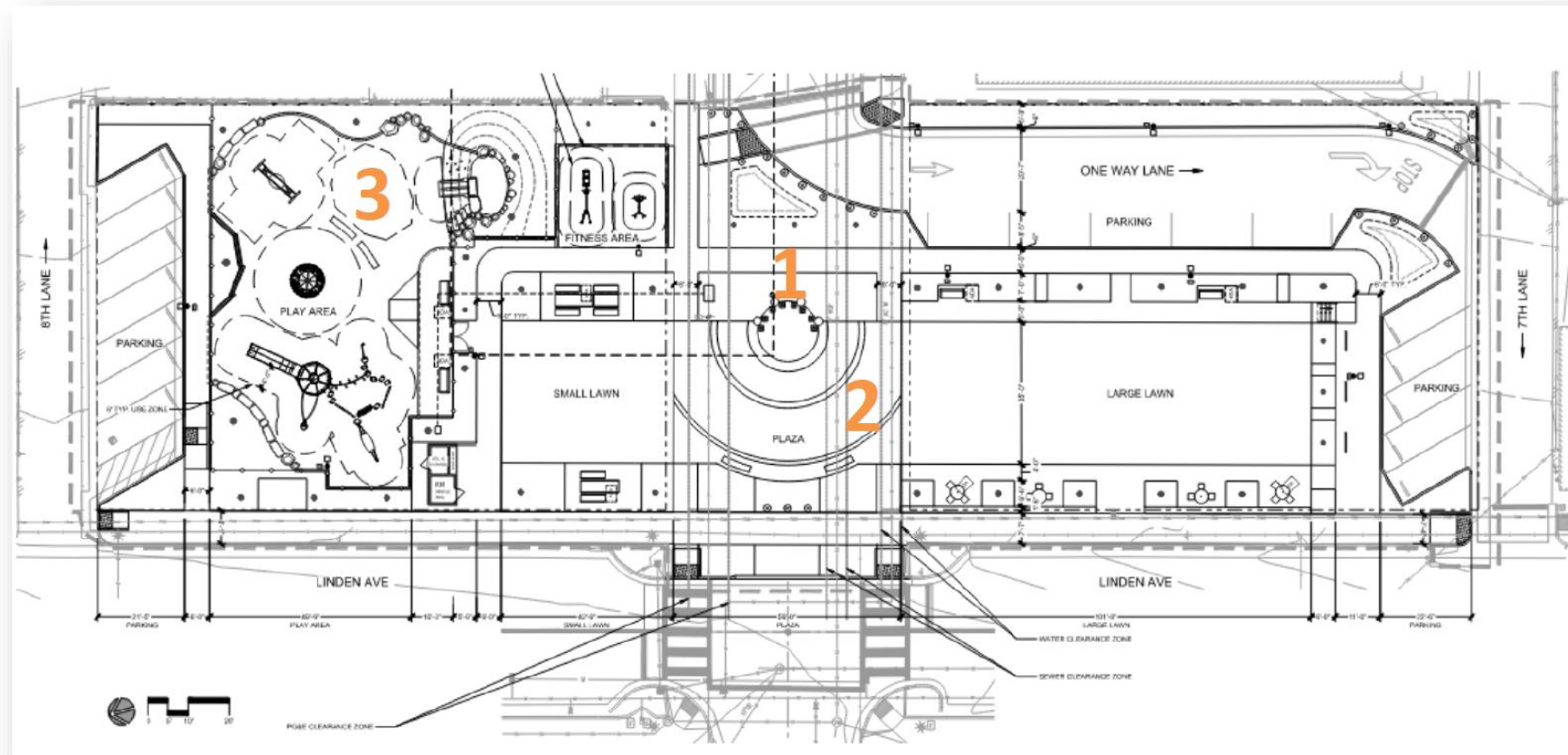
Shortlisted Artists Proposal Snapshots – Not Selected

# New Park at Linden Avenue & Pine Avenue - Overview

The project includes three distinct but coordinated mosaic art components designed to work in harmony:

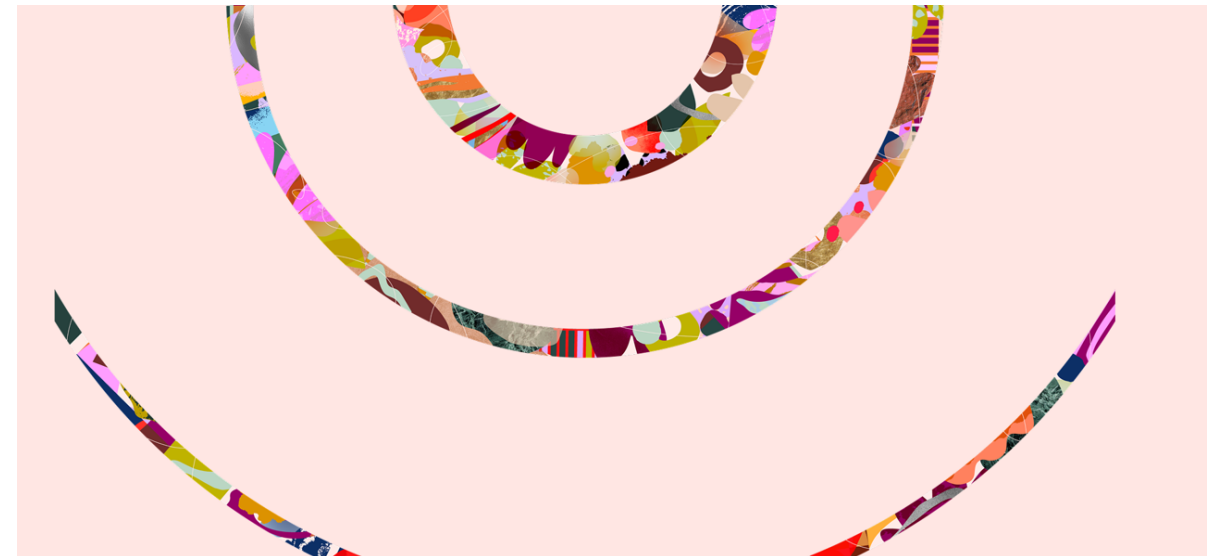
1. Mosaic Columns at Plaza
2. Mosaic Inlays at Plaza
3. Playground Mosaic Sculpture.

The goal is for a single artist or artist team to develop all three to create a cohesive visual and conceptual language throughout the site.





# Alexandra Proba: "Threads of Community"





# Alexandra Proba: “Threads of Community”

**Artist Website:** [www.studioproba.com](http://www.studioproba.com)



## Concept

- Inspired by weaving, textiles, and mosaic traditions across cultures, as well as natural interconnections like roots, rivers, and landscapes. The artworks incorporate Latino, immigrant, and Native American motifs translated through abstraction into a contemporary form. The Old Town neighborhood of SSF has long been shaped by threads of migration, industry, and culture. From its immigrant roots to its vibrant present, Old Town is where stories, traditions, and people weave together into a divers and resilient community.

## Columns

- Each column reflects a facet of Old Town's community, with details co-shaped through workshops where residents' marks, memories, and motifs are woven into final forms.

## Inlay

- The inlays serve as pathways of memory and connection, guiding people through the park as though waling along woven fabric. Embedded within them are abstract echoes of the column themes.

## Play Sculpture

- At the heart of the New Park at Linden & Pine, the playground sculpture becomes the most joyful expression of “Threads of Community.” Rather than a literal bundle, it is a constellation of bold, abstract forms that echo the shapes and motifs of the columns and extend them into a space of play, touch & imagination.



# Alexandra Proba: “Threads of Community”

**Artist Website:** [www.studioproba.com](http://www.studioproba.com)



## Community Engagement

- At the heart of my work is a desire to spread joy, spark curiosity, and create spaces where people—especially children—feel seen, included, and inspired. For Linden and Pine Park, I propose a community engagement plan that transforms the process itself into a shared experience of wonder, creativity, and play.

## Materials Overview

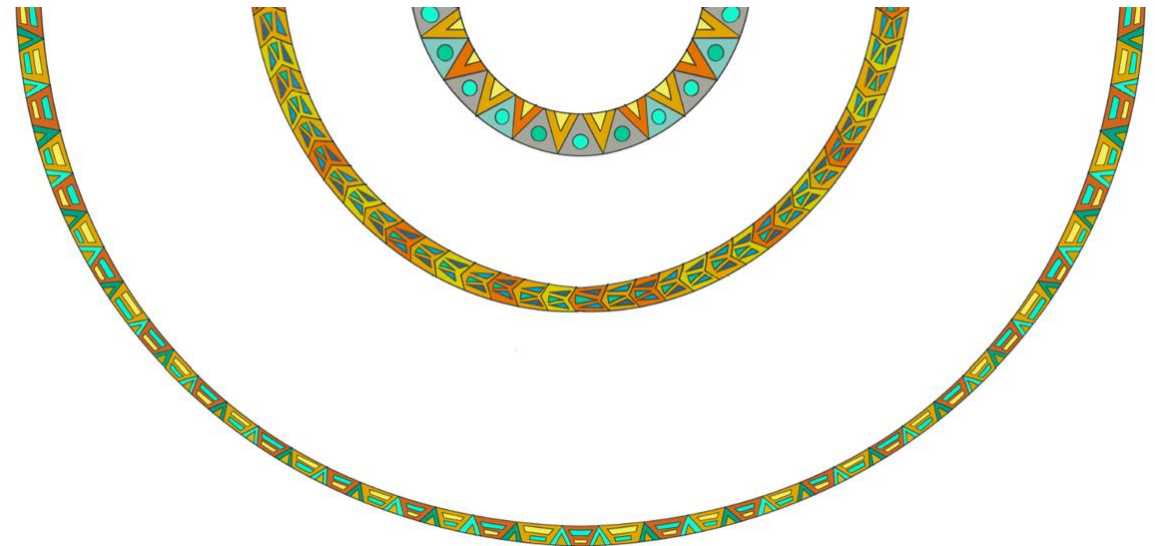
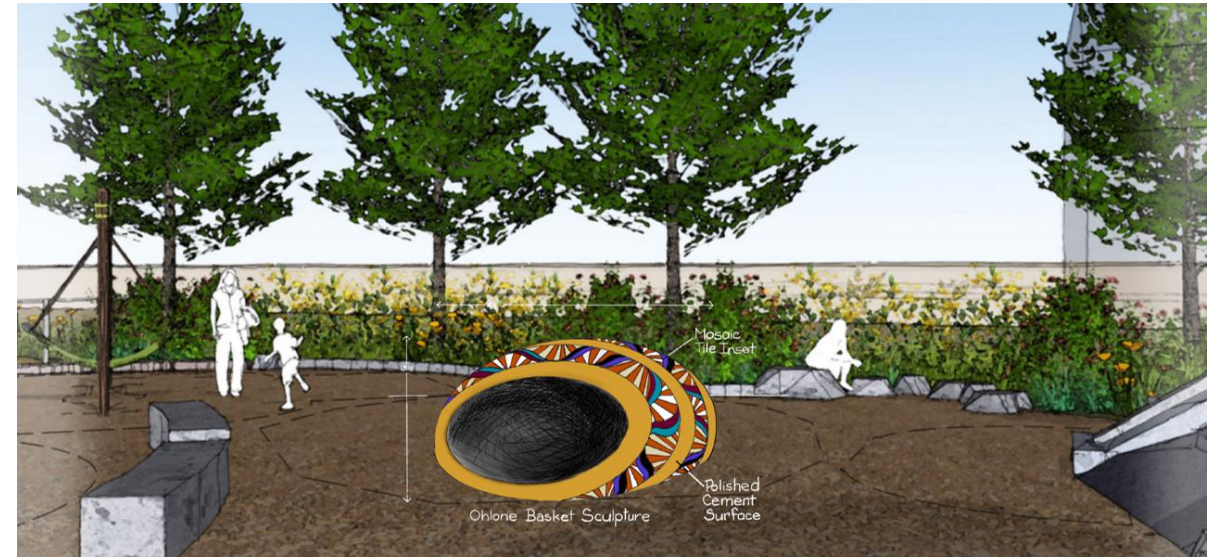
- The artwork for Threads of Community is conceived as a permanent, durable, and safe installation that integrates seamlessly into Linden & Pine Park. Each element—the columns, ground inlays, and playground sculpture—will be fabricated using high-quality materials such as porcelain, stone, glass, marble, and metal mosaics, chosen for their longevity, vibrancy, and ability to withstand the Bay Area climate.

## Maintenance Consideration

- The artwork for Threads of Community is conceived as a permanent, durable, and safe installation that integrates seamlessly into Linden & Pine Park. Each element—the columns, ground inlays, and playground sculpture—will be fabricated using high-quality materials such as porcelain, stone, glass, marble, and metal mosaics, chosen for their longevity, vibrancy, and ability to withstand the Bay Area climate.



# Colette Crutcher & Aileen Barr: Untitled





# Colette Crutcher & Aileen Barr: Untitled

**Artist Website:** [www.colettecrutcher.com](http://www.colettecrutcher.com)



## Columns

- The columns are ornamented with tile artwork combining Native-inspired arrow motifs with biomorphic forms that suggest both the natural world and biotech innovation. The vibrant colors animate the space, which has multiple uses as a focus for leisure, play and community gatherings.

## Inlay

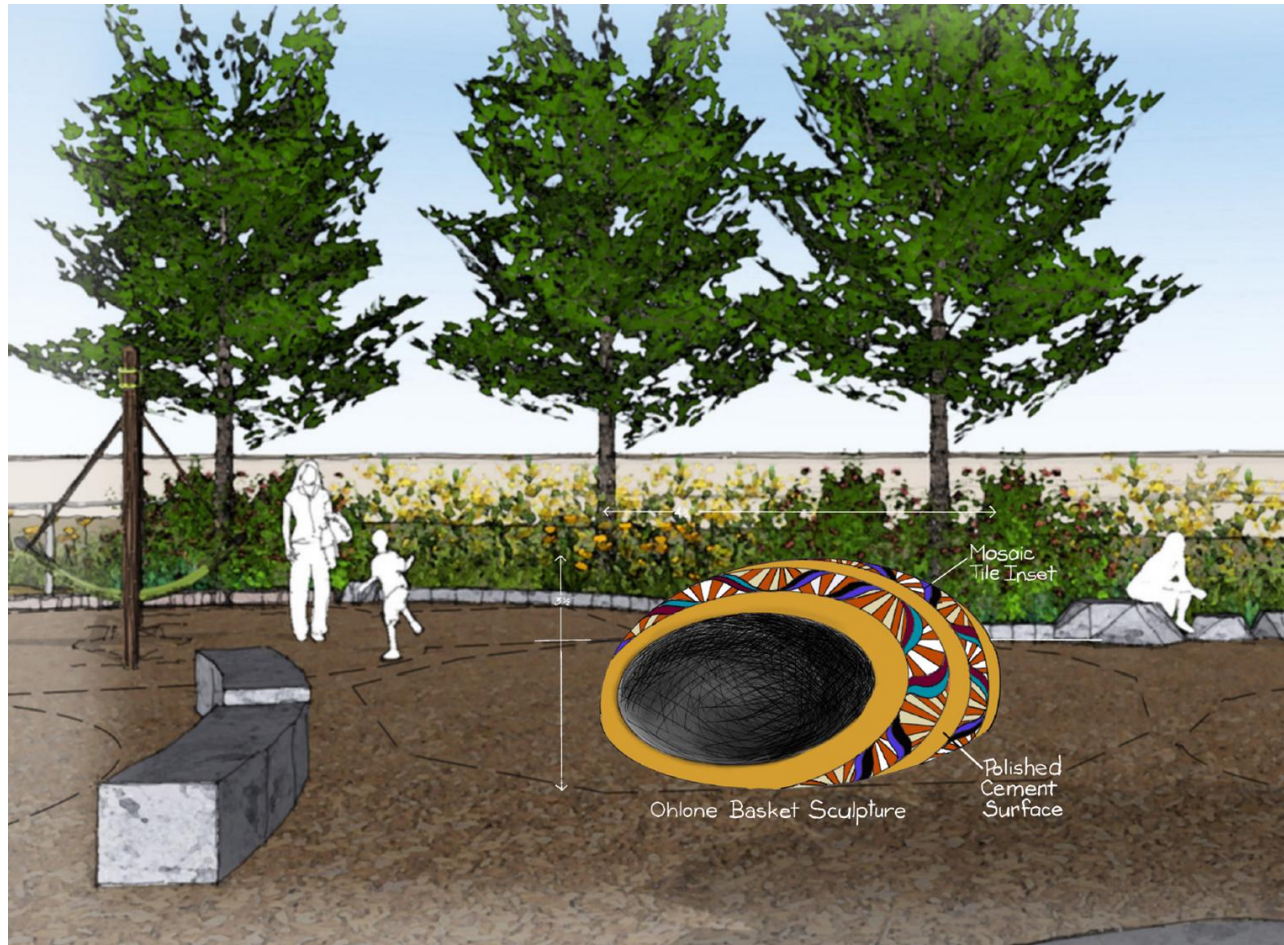
- Our tile plan for Linden Park evokes the past and future of South San Francisco. The geometric paving designs derive from decorative patterns of the Bay Area's original inhabitants, the Ramaytush Ohlone, rendered in earth tones and the aqua of the San Francisco Bay

## Play Sculpture

- The columns are ornamented with tile artwork combining Native-inspired arrow motifs with biomorphic forms that suggest both the natural world and biotech innovation. The vibrant colors animate the space, which has multiple uses as a focus for leisure, play and community gatherings.

# Colette Crutcher & Aileen Barr: Untitled

**Artist Website:** [www.colettecrutcher.com](http://www.colettecrutcher.com)



## Community Engagement

- The power of art to engage communities is a fundamental aspect of our work. We are highly experienced in generating meaningful involvement, allowing locals to participate in our art-making process.
- A series of hands-on workshops will provide the opportunity for children and adults to experience working with clay, share in the joy of making, learn our process and create small tiles to be included in the overall artwork. This human contact has been central to all of our public installations. Community participation is also a safeguard against future vandalism, as it fosters a deep sense of ownership and pride in the work.

## Materials Overview

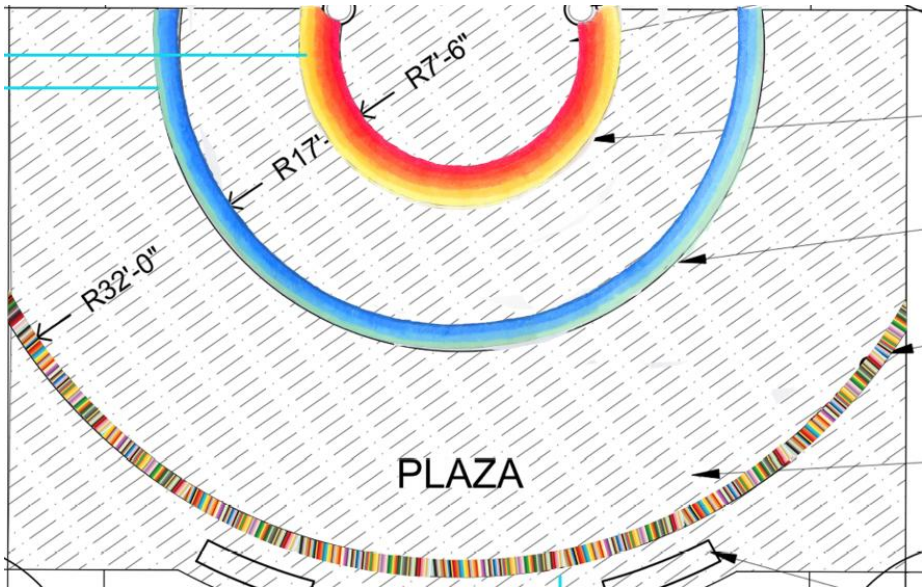
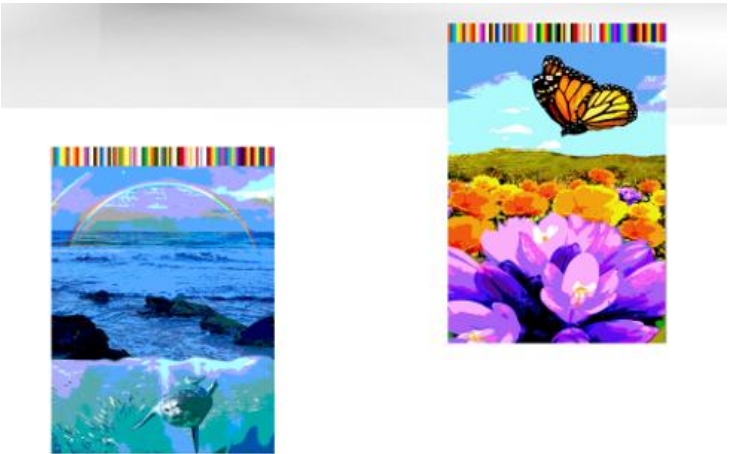
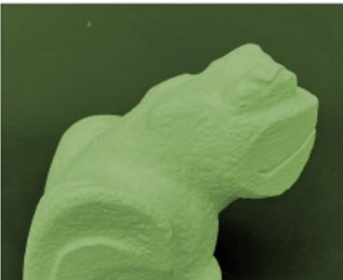
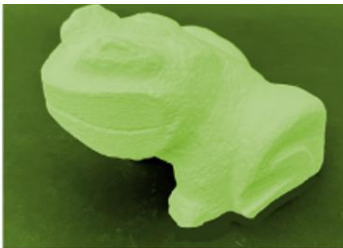
- Our materials are colorful and durable. The paving components will be made of cast concrete (GFRC) with integral color and will contain handmade and commercial tile elements, all high-fired for strength and matte-textured for slip resistance. The tile elements in the paving art will be cast directly into each paver, rather than cemented on separately, ensuring structural integrity for a surface that will need to stand up to heavy foot traffic and occasional vehicular use as well. Tile colors, and the mason stains incorporated into cast concrete, do not fade over time.

## Maintenance Consideration

- Paving does get dirty; however, the maintenance needs of this artwork are no different from any other element of the park—removal of leaves and other debris will be necessary on an ongoing basis; an occasional power washing will clean it and restore its original brilliance.



# Wowhaus: "COLMA"





# Wowhaus: “COLMA”

**Artist Website:** [www.thewowhaus.com](http://www.thewowhaus.com)



## Concept

- COLMA is a collection of colorful permanent artworks that celebrate the rich cultural and ecological diversity of South San Francisco, creating a vibrant, welcoming space in the new Linden & Pine Park. Inviting people of all ages and backgrounds to come together in community, the designs are inspired by the artists' engagement and conversations with South San Francisco community members.

## Columns

- Mosaic columns frame the stage area with intricate, colorful smalti mosaics that honor native species symbolic of the vibrancy of the community; these native California species have special meaning in many of the diverse cultures who call South San Francisco home.
- The four columns honor the community's rich past and evoke its promising future.

## Play Sculpture

- A highly durable Frog Sculpture measuring 3' h x 4' w x 4' will invite playful engagement in the park.
- Hand-sculpted by WOWHAUS, the Glass Fiber Reinforced Concrete sculpture evokes ancient Mayan designs; its durable surface is designed to withstand heavy use and interaction.
- WOWHAUS has extensive experience creating interactive sculptures that are sited in public spaces; safety and durability will be addressed in this design.



# Wowhaus: “COLMA”

**Artist Website:** [www.thewowhaus.com](http://www.thewowhaus.com)



## Community Engagement

- Community members will be invited to join the artists in making by hand a part of the artwork- making a special mosaic stripe with a color they choose that they feel reflects their unique cultural heritage or their most loved place in South San Francisco; their stripe will forever be part of the South San Francisco Spectrum mosaic in the paving.

## Materials Overview

- Columns: Smalti mosaic with Laticrete 254 Thinset and Laticrete Permacolor
- Inlay: Dal Tile Keystone tile with integral color and Kolorine Byzantine Mosaic
- Play Sculpture: Smooth surface, Pigmented Glass Fiber Reinforced Concrete with internal metal structure

## Maintenance Consideration

- All art installations are made with highly durable, low-maintenance exterior grade materials with demonstrated success in highly trafficked sites such a public parks. All installations can be maintained by washing with mild soap, warm water and a cloth
- In the event of damage to the mosaic, it is highly repairable. Likewise, GFRC can typically be patched and sanded in the case of minor surface damage. NO chemicals or power-washing should be used; grout sealant should be applied every one to three years, as needed and sealant or sacrificial anti-graffiti coating should be applied to the Frog sculpture every two to five years, as needed.