



Design Services for Cypress & Pine Park

04/29/2025

South San Francisco

206 Pine Ave



Recommendation

Recommendation

It is recommended that the City Council adopt a resolution approving a
Consulting Services Agreement



Context

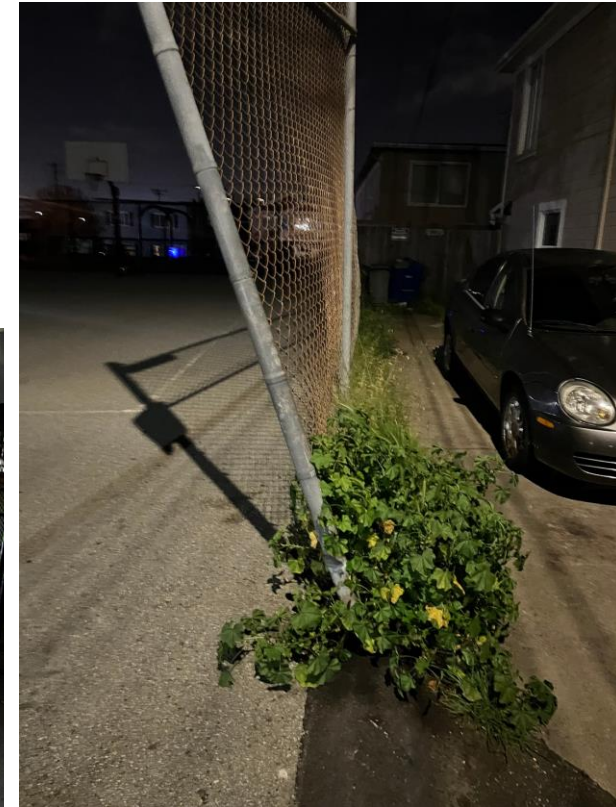
206 Pine Ave

Context

- Serves a densely populated area of the city
- .3 acres Includes
 - An open turf area
 - A children's play area
 - picnic tables
 - Two half-court basketball courts
- Last renovated in 2000

Parks current condition is in disrepair

- Fences are deteriorating
- Basketball hoops rusted over
- Carousel broken



206 Pine Ave

Context cont.

- Was identified in the 2015 Parks and Recreation Master Plan and 2022 General Plan as an area of concern

RFP Process & interviews

RFP Process & Interviews

- A request for Proposal (RFP) was issued by staff in January 2025
- Ten firms submitted proposals by the deadline
- All 10 proposals were reviews by
 - Director of Capital Projects
 - Deputy Director of Capital Projects
 - Director of Parks and Recreation
 - Deputy Director of Parks and Recreation
 - Parks Manager

206 Pine Ave

Outcome

- Based on scoring and panel consensus, SSF Landscape Architects was selected.
- Their negotiated fee is \$200,000 — 5% lower than the next most affordable proposal.
- Key factors in the award decision include:
 - Proven success on similar projects
 - Strong community engagement approach
 - Inclusion of multiple bilingual design professionals on the team
- Selecting SSF now helps maintain the project schedule, with construction completion targeted for the end of 2026.

Budgeting

Budgeting

- There is no fiscal impact to the budget.
- The project is included in the City of South San Francisco's Capital Improvement Program.
- Sufficient funds are available to award the Consulting Services Agreement.
- Design and a portion of construction costs will be funded by Park Fees.

Staff Recommendation

Staff Recommendation

Staff recommends that the City Council of the City of South San Francisco adopt a resolutions authorizing the City Manager to execute a Consulting Services Agreement With SSF Landscape Architects based on their qualification and experience.

THANK YOU
FOR JOINING US TODAY



Design Services for Cypress & Pine Park

City of South San Francisco