

## Exhibit 1



South San Francisco Property Lines Part 1



South San Francisco Property Lines Part 2

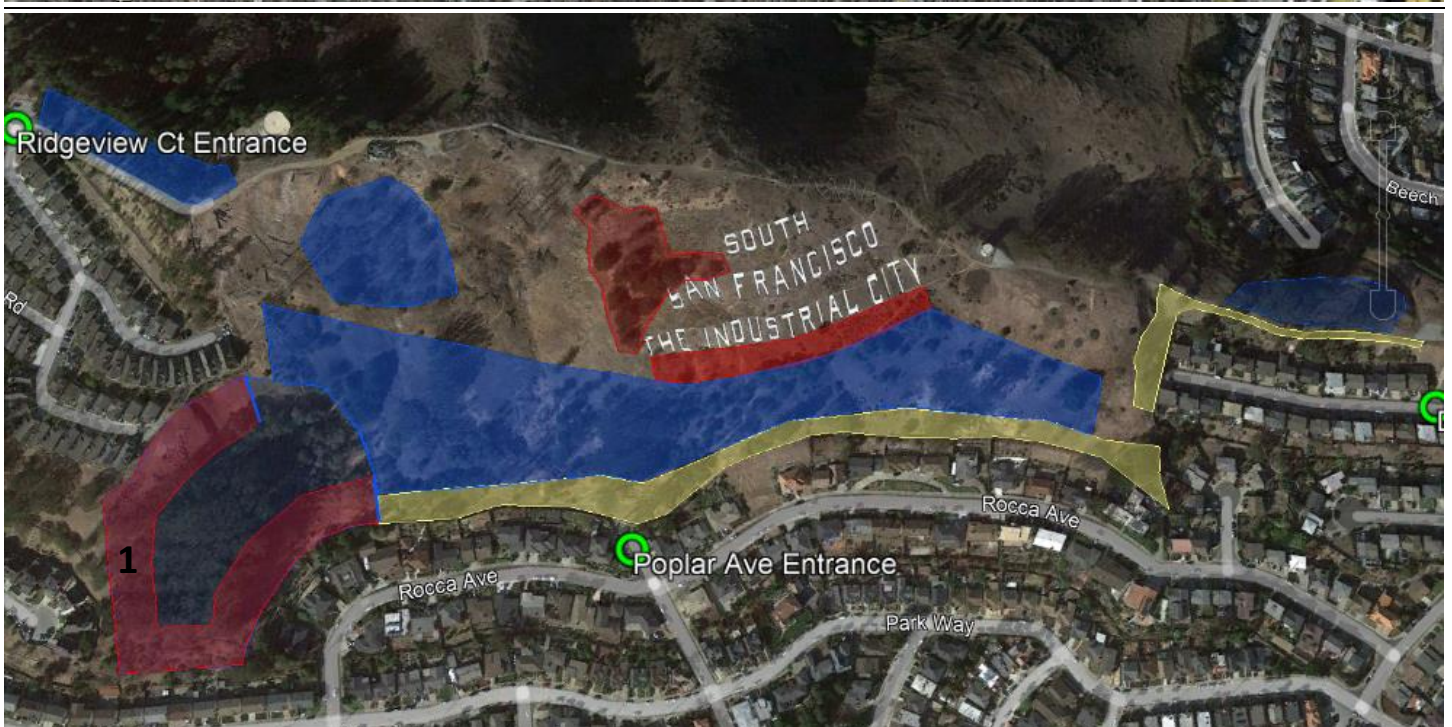
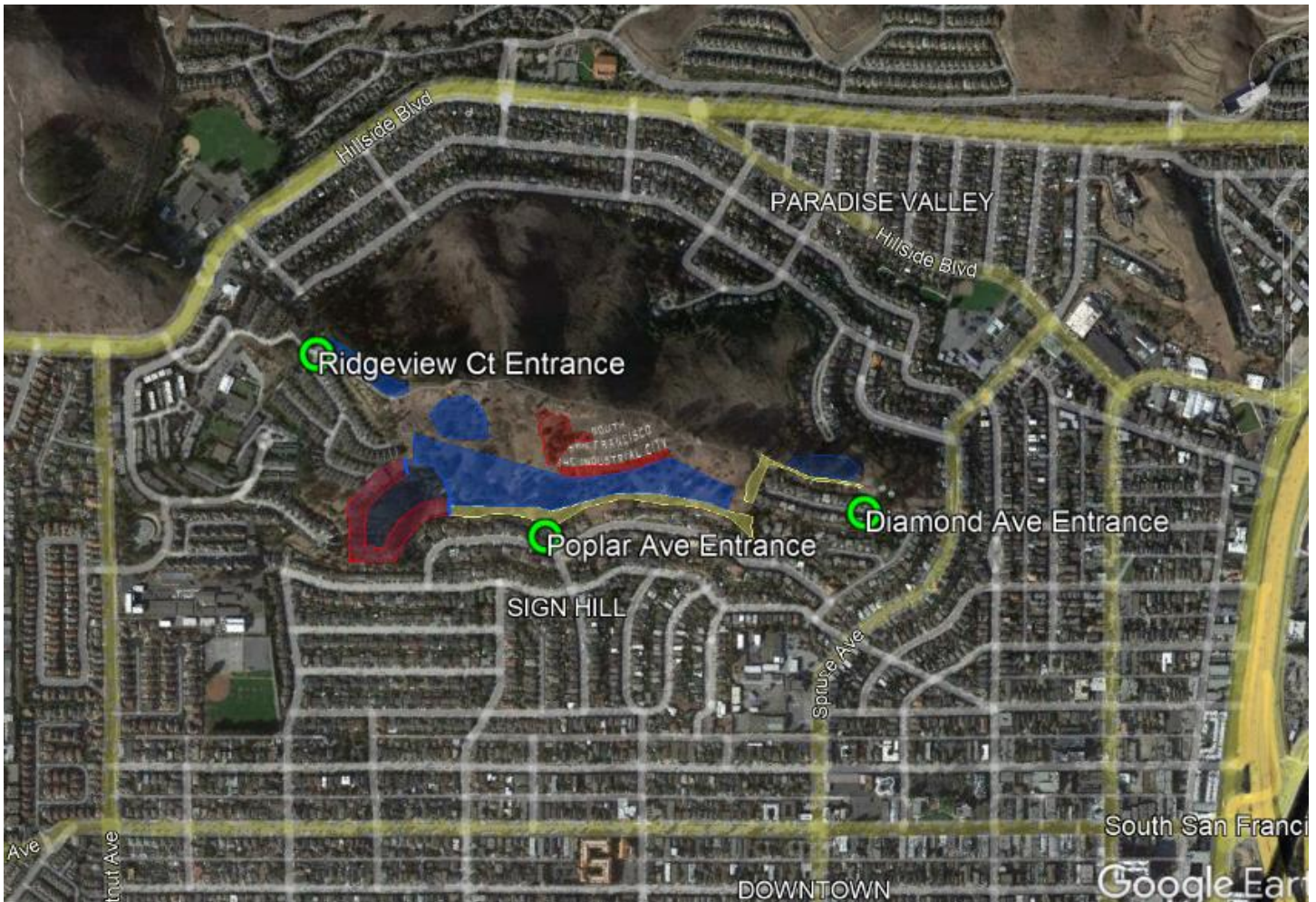




South San Francisco Property Lines Part 3



## Exhibit 2

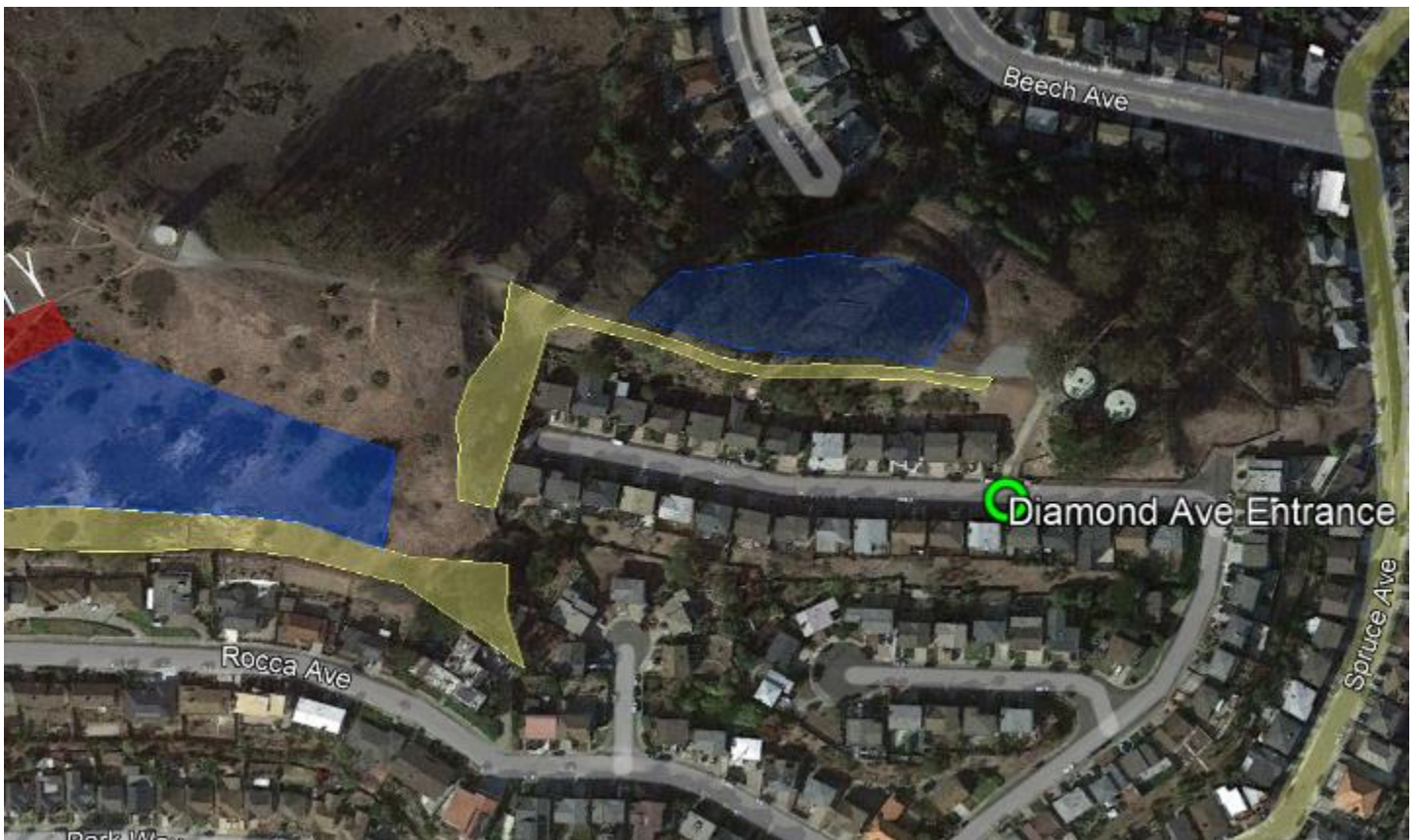


Sign Hill Project Overview





Southwest Areas of work



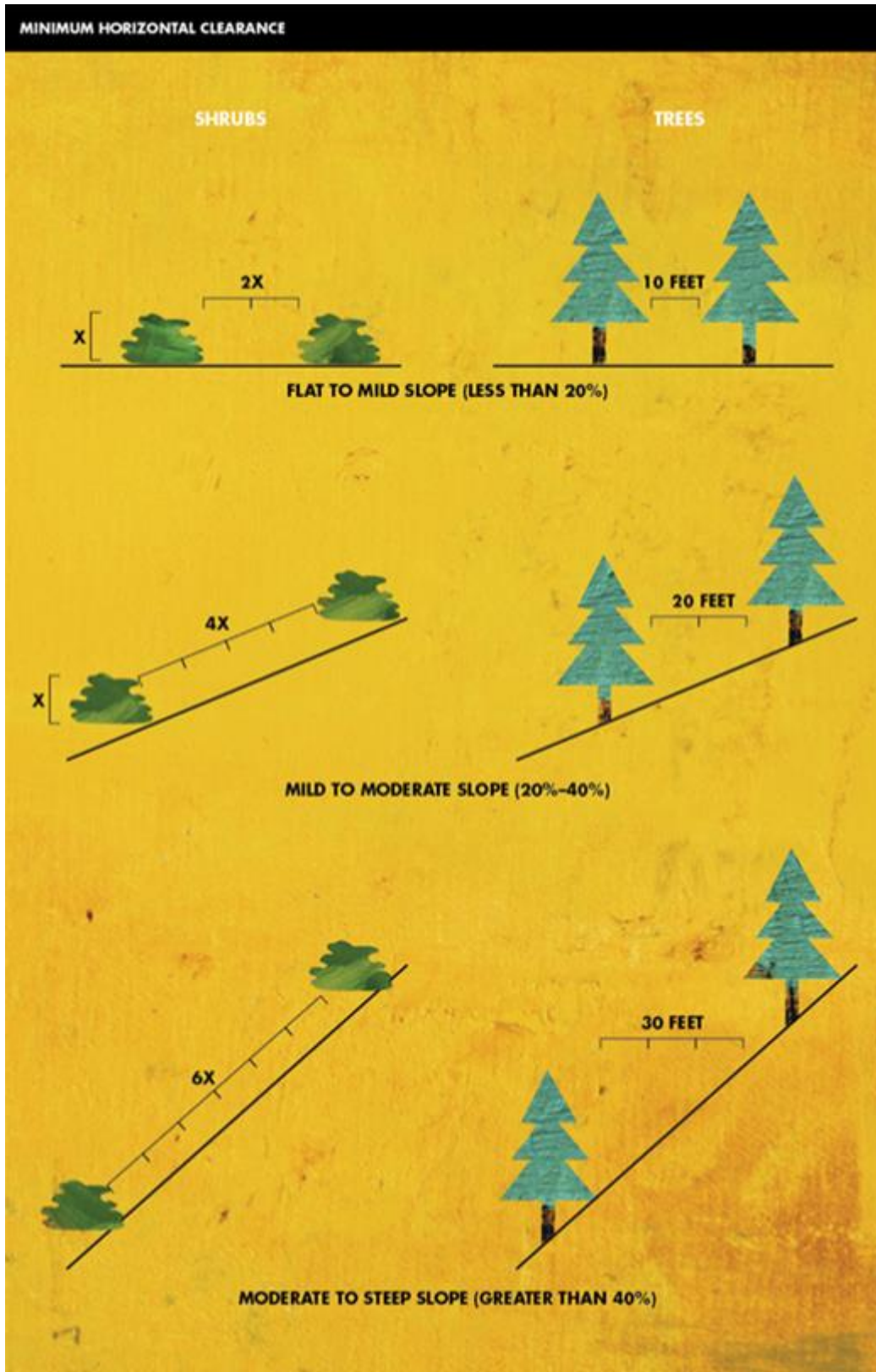
Southeast Areas of Work

Legend:

- **Red Areas** = Removal of all trees and shrubs except CA native species within these zones. Any remaining trees must comply with CalFire standard defined in the scope of work.
- **Red Area With #1** = Removal of all trees and shrubs except CA native species within 100' from residential fences. Any remaining trees must comply with CalFire standards defined in the scope of work.
- **Blue Areas** = Trees and shrubs are to be removed in order to "thin out" the groves in accordance to CalFire standards defined in the scope of work.
- **Yellow Areas** = Previous removals were performed in this area. Stumps are to have suckers removed and be treated with systemic herbicide identified in scope of work. Shrubs and other ladder fuels are to be removed and remaining trees to be "thinned" in accordance with CalFire standards. Native trees are to be retained.
- **Green Circles** = Designated vehicle entrances to Sign Hill



## Exhibit 3



## MINIMUM VERTICAL CLEARANCE

