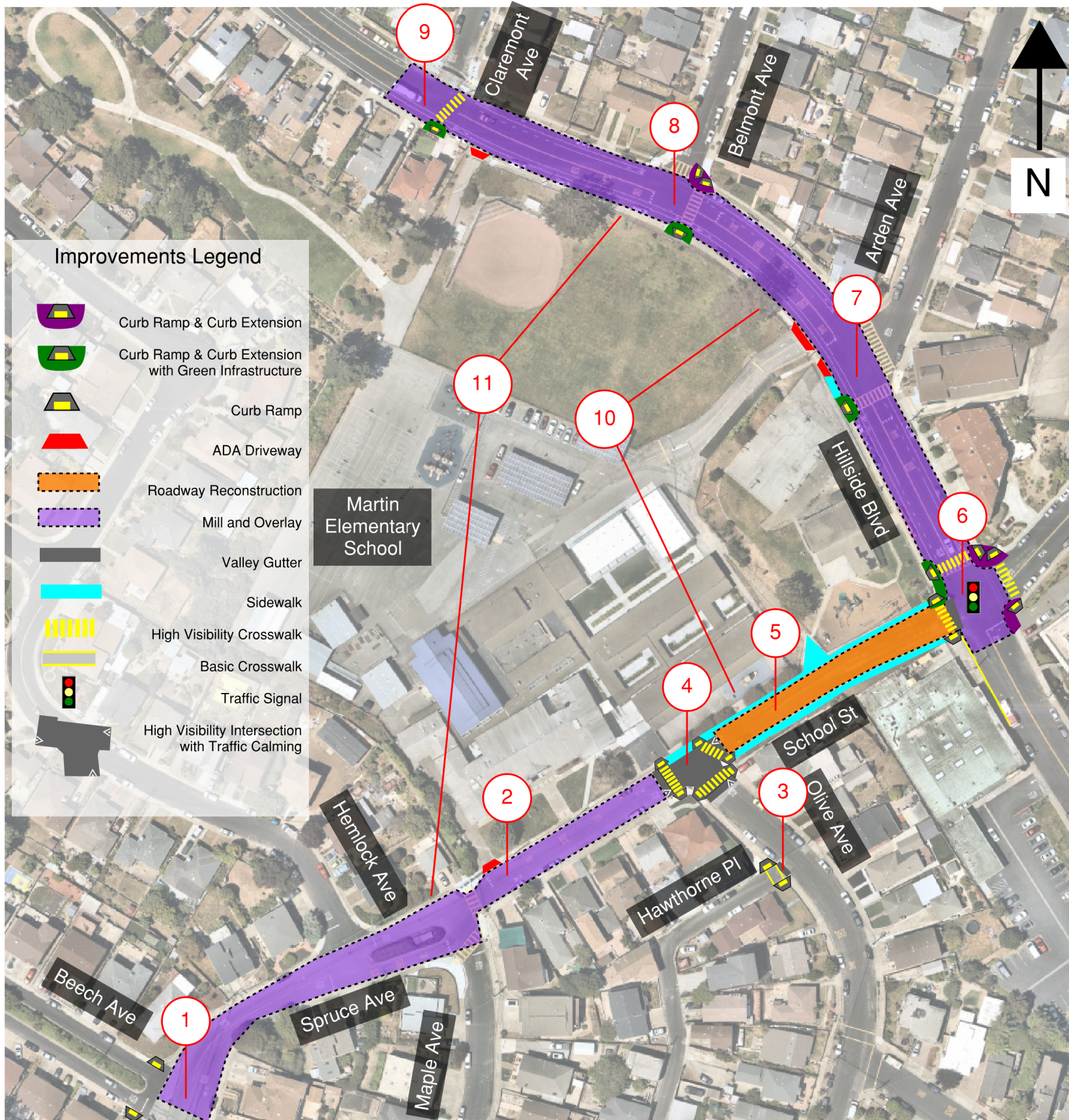


School Street/Spruce Avenue and Hillside Boulevard Safety and Access Improvement Project

South San Francisco, CA

Attachment B



Improvements not to scale

- 1 **Spruce Avenue and Beech Avenue intersection:**
Install curb ramps across Beech Avenue.
- 2 **School Street and Maple Avenue intersection:**
Update school driveway to ADA compliance.
- 3 **Hawthorne Place and Olive Avenue intersection:**
Install curb ramps, valley gutter, and basic crosswalk across Hawthorne Place.
- 4 **School Street and Olive Avenue intersection:**
Install high visibility intersection with traffic calming elements. Install curb ramps across School Street and Olive Avenue. Widen northern sidewalk to accommodate curb ramps.
- 5 **School Street (Olive Ave-Hillside Blvd):**
Pavement Treatment: Remove 15" AC/AB with 9" HMA Overlay to accommodate installation of new sidewalk north and south of the roadway. Widen sidewalk at pinch point constraints.
- 6 **School Street and Hillside Blvd intersection:**
Install bulb-outs at the two northern corners (northwest corner with Green Infrastructure) and the southeast corner with curb ramps. Install curb ramp at the southwest corner. Remove driveway and install a valley gutter across School Street. Install traffic signal and high visibility crosswalks. Yellow curb paint in front of the market at the southwest corner.
- 7 **Hillside Boulevard and Arden Avenue intersection:**
Update school driveways to ADA compliance. Install larger bulb-out with Green Infrastructure, bike rack, and one curb ramp across Hillside Boulevard.
- 8 **Hillside Boulevard and Belmont Avenue intersection:**
Install two bulb-outs (one with Green Infrastructure) with ramps.
- 9 **Hillside Boulevard and Claremont Avenue intersection:**
Update school driveway to ADA compliance. Install bulb-out with Green Infrastructure, one curb ramp, and a high visibility crosswalk across Hillside Boulevard.
- 10 **Hillside Boulevard and School Street:**
Spot areas of sidewalk replacement to address ADA compliance issues in front of school property.
- 11 **Hillside Boulevard and School Street:**
Pavement Treatment: 2" Mill and Overlay

