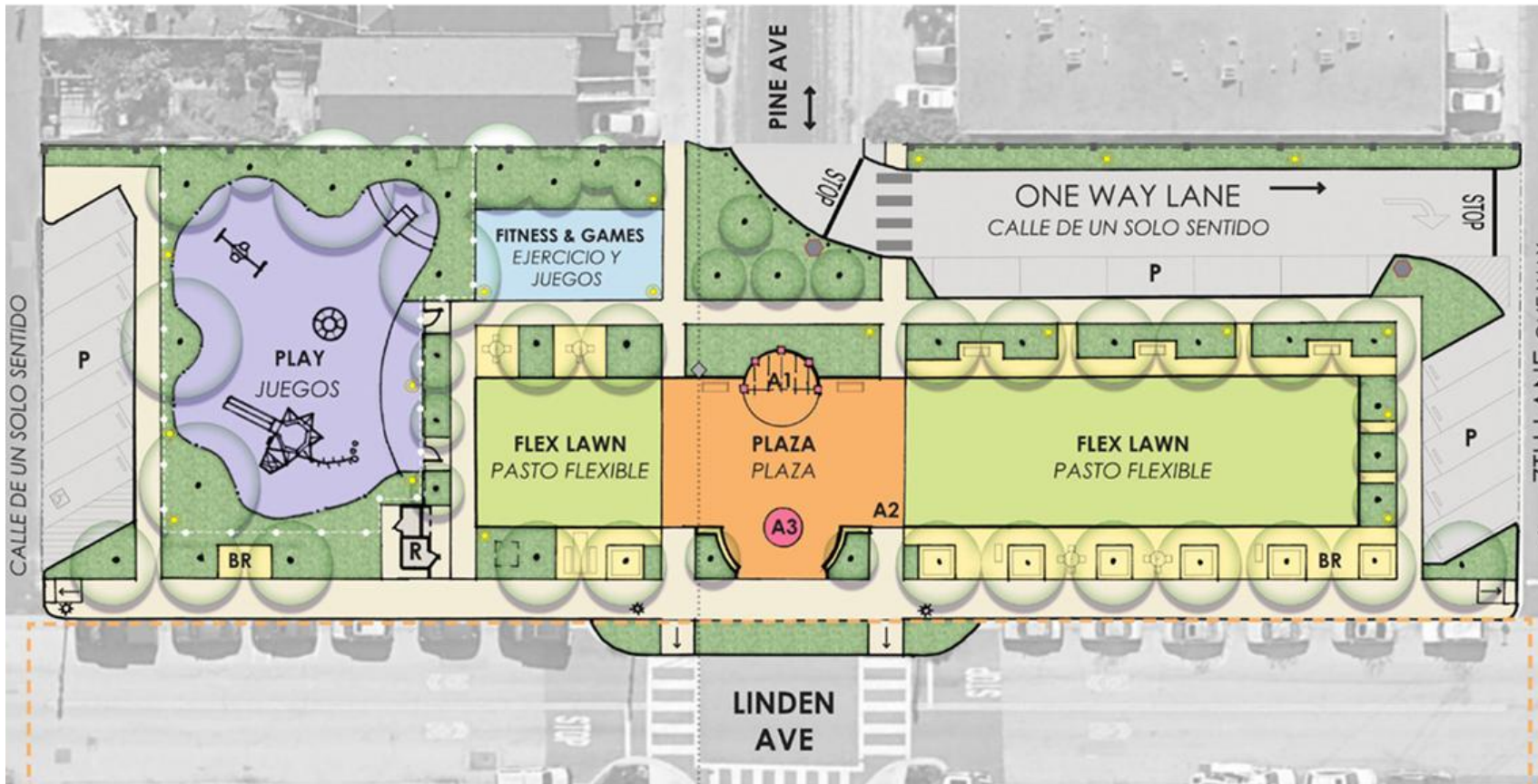




# New Park at Linden Avenue and Pine Avenue Revised Columns Design

May 26, 2026  
Cultural Arts Commission

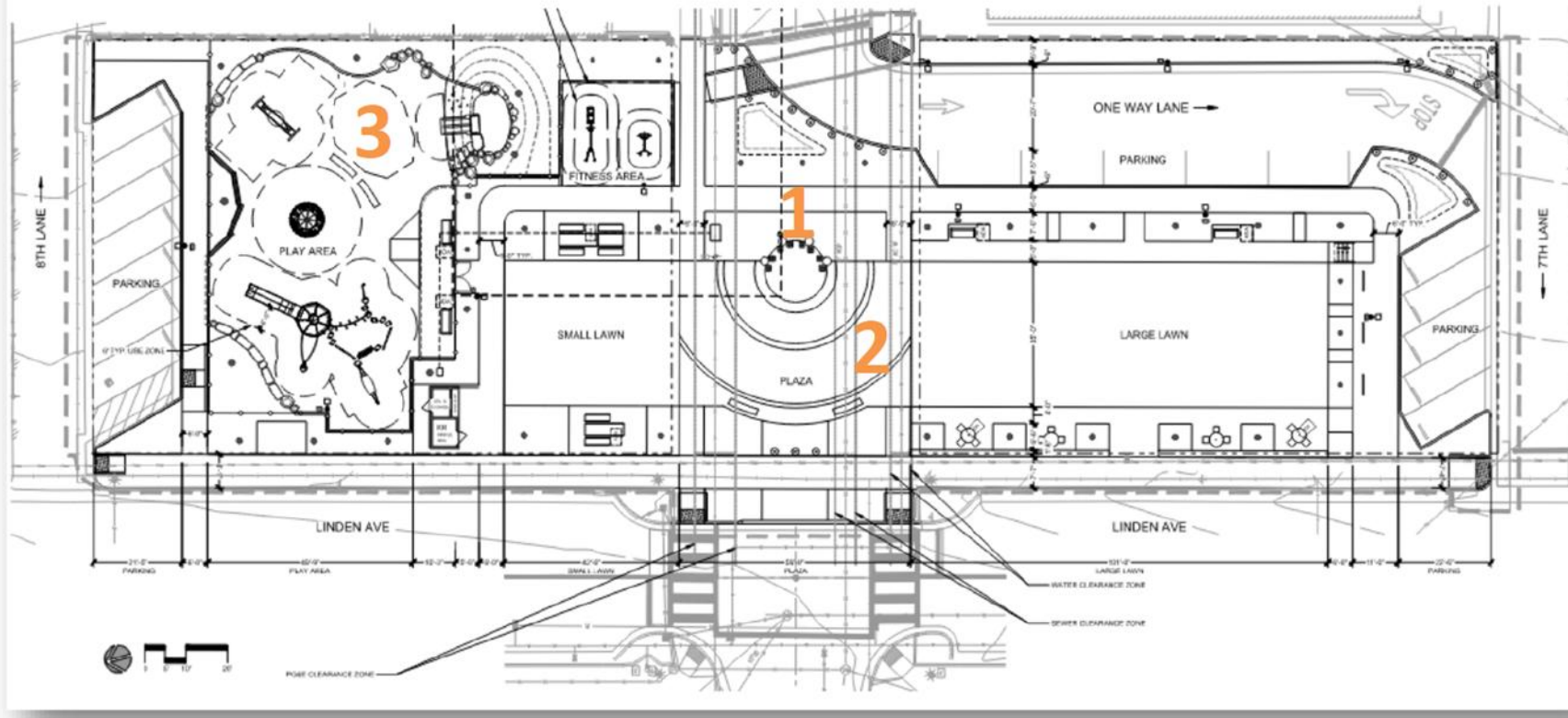
# New Park at Linden Ave & Pine Ave - Overview



## Identified Art Priorities

- Interactive Art
- Murals
- Entry/Identity Art

# New Park at Linden Ave & Pine Ave - Overview

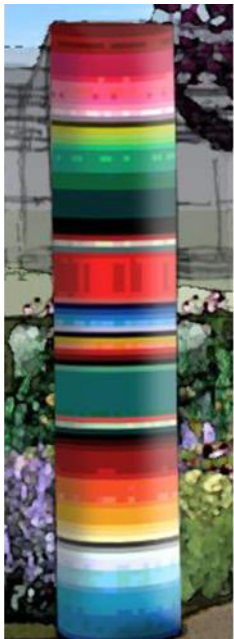
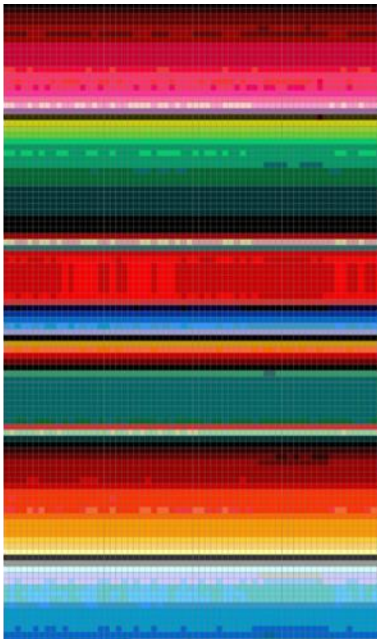
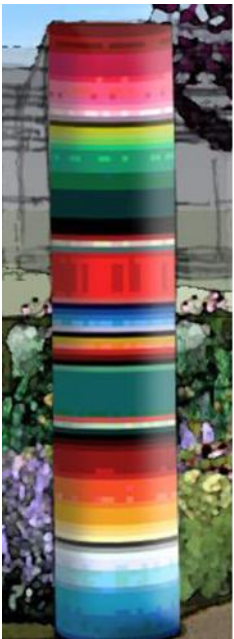


## Art Components

1. Mosaic Columns at the Plaza
2. Mosaic Inlays at the Plaza
3. Playground Mosaic Sculpture



# J Muzacz Original Design "Punto de Encuentro"





# J Muzacz Revised Columns Design

## Woven Together

The blanket is an ubiquitous accessory in park settings worldwide — underfoot at picnics, softening the ground and creating a protective gathering place to eat, play, relax, read, or rest.

This simple textile is transformational in setting down a space with care and intention, ripe for connection both with nature and our neighbors.

These mosaic columns wrapped in comforting colors are a celebration of so many diverse cultures in South San Francisco and speak to a unified community, honoring the past, building a timeless textile for the present and onward into the future.





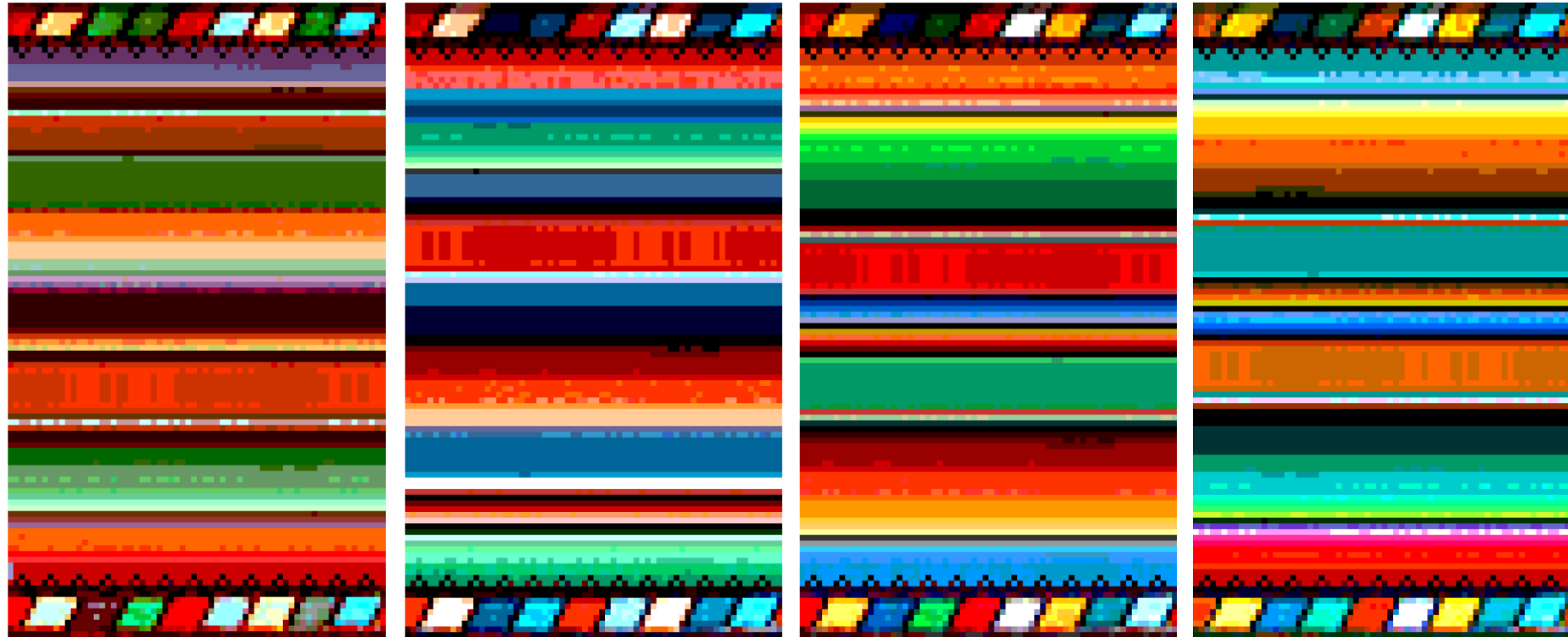
# J Muzacz Revised Columns Design

## Woven Together

This design evolved from the initial serape-inspired design selected by both the community and the arts commission to be more inclusive with a global perspective.

Recolored bands are intentionally woven together, to reference South San Francisco's Sister Cities — Lucca, Italy, Pasig City, Philippines, Atotonilco El Alto, Mexico, Saint-Jean-Pied-de-Port, France, and Kishiwada, Japan, among others.

Additional universal motifs were added as a border: an angular color stripe similar to many in South and Central American indigenous textiles, and a subtle frilled edge referencing lace or crochet common in Western Europe.





# J Muzacz Revised Columns Design

## Woven Together – Abstract Statement

The four mosaic columns at Linden and Pine are inspired by the woven textile traditions shared across South San Francisco's five Sister Cities, where patterns, colors, and interconnected forms have long symbolized community, storytelling, and cultural identity. Drawing from weaving traditions in Mexico, Japan, Italy, the Philippines, and France, the mosaics use layered geometric patterns and interlacing bands of color to represent the idea that individual histories, cultures, and generations become stronger through connection. Like woven fibers crossing to create a unified textile, the columns reflect the relationships that bind South San Francisco's diverse communities together.

Equally important to the concept is the way the artwork itself was created. Community members participated in the development of the mosaic patterns, working collectively in a process inspired by traditional weaving practices found across these cultures, where textiles were often created through shared labor, conversation, and gathering. Just as individual threads are woven together to form a larger composition, each participant contributed to the evolving surface of the columns, embedding personal presence and collective memory into the artwork itself. The columns are intended to serve as a backdrop for everyday life and shared celebration — family gatherings, music, public events, and future community traditions — while standing as a lasting reflection of connection, collaboration, and cultural exchange.



# J Muzacz Revised Columns Design

## Sister Cities Color References



Lucca, Italy



Kishiwada, Japan



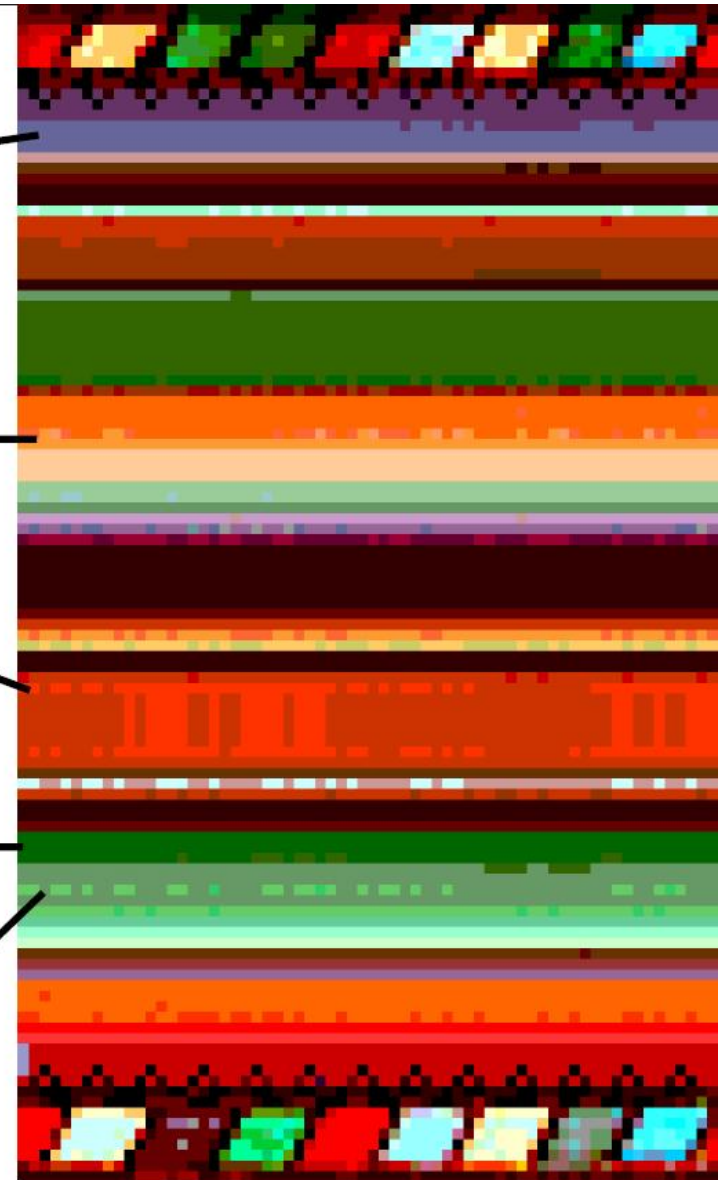
Saint-Jean-Pied-de-Port, France



Atotonilco El Alto, Mexico



Pasig City, Philippines



# J Muzacz Revised Columns Design

## Sister Cities Textile References



Atotonilco El Alto,  
Mexico



Saint-Jean-Pied-de-Port,  
France



Pasig City, Philippines



Lucca, Italy

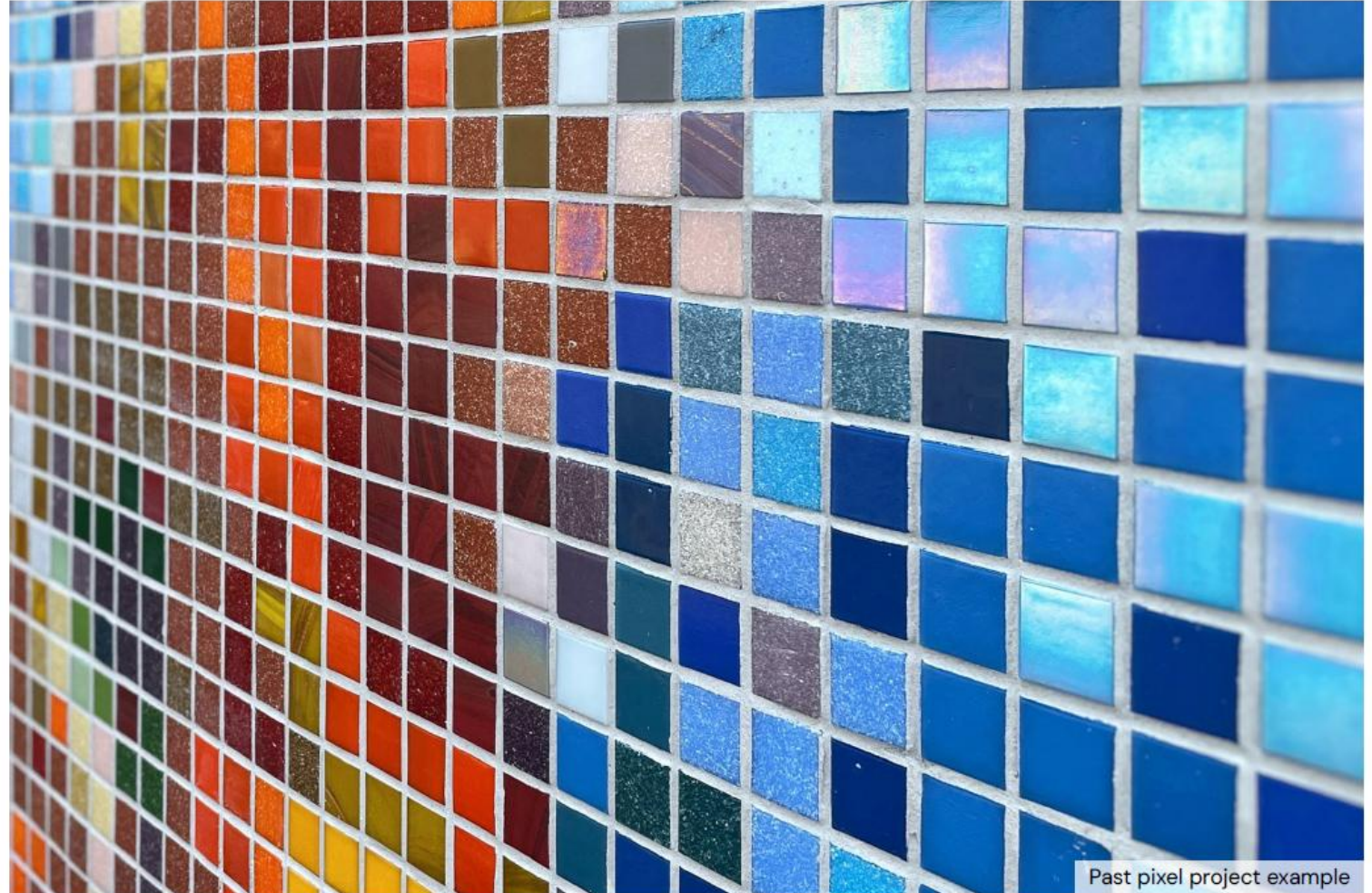


Kishiwada, Japan



# J Muzacz Revised Columns Design

## Material Texture



Past pixel project example



# J Muzacz Revised Columns Design

## Relevant Recent Pixel Projects





# J Muzacz Revised Columns Design

## Digital Design to Final Mosaic

Subtle tile texture, iridescence, and grout interstices work to soften the vibrant on-screen coloration for an architecturally-integrated final piece.

Additionally, community participation creates “glitches” where individuals interpret colors on their template with slight variation, which adds textural depth, making it a completely unique one-of-a-kind artwork.





# J Muzacz Revised Columns Design

## Digital Design to Final Mosaic





# J Muzacz Revised Columns Design



# THANK YOU



New Park at Linden Avenue and  
Pine Avenue Revised Columns Design